

SS 1034767 EconicSD Battery Cut-Off Switch Retro-Fit

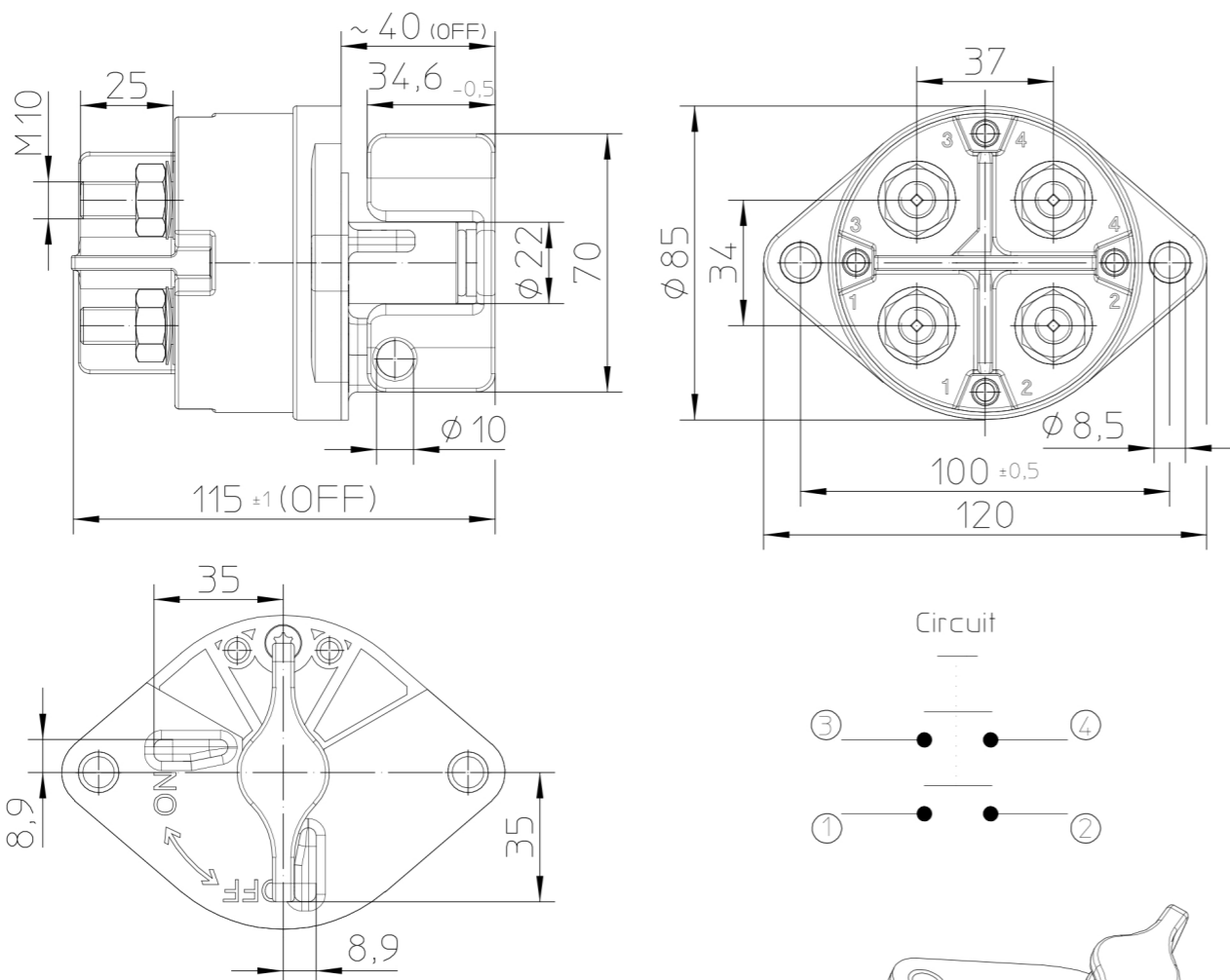
ISSUE:

If customer wants to replace battery switch with lockable battery cut-off switch. Lockable in off position ONLY.
Work Instructions attached and Part Numbers are listed below.

Battery Cut-Off switch Part# A 001 545 57 08

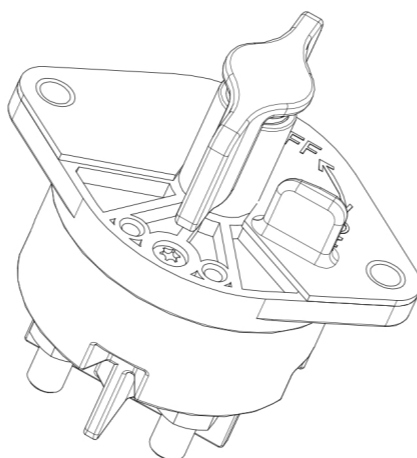
Bracket Part# A 956 540 27 40

Cover Part# A 956 541 02 05



Technical Data:

Case Material:Cover	Vyncolit black
Base Plate	PA GF black
Key Plate	PA GF red
Switch Lever Material	PA GF red
Min.Insulation Resistance	100MΩ
Dielectric Withstanding Voltage	1050V-1min.
Max.Contact Drop during Resistive Load	150mV
Voltage	up to 32VDC
Duty Rating	2x 500A
Overload	2x2000A-15min.
.....	2x2500A-10sec.
Sealing	IP 67/ IEC 529
Vibration	10G/ 18-500Hz
Shock G-Lever	50G/ 11ms
Weight	~650g
Temperature Range	-40°C to +85°C
Wire Section (At Nominal Load)	min. 250mm²
Mounting Position	optional
Switch Lever	not removeable
.....	lockable in "OFF" position
.....	not lockable in "ON" position
Torque (Main Terminals)	15-20Nm



For this drawing we reserve the copyright in accordance with DIN ISO 16016

Stammdaten/ masterdata Smaragd	D-Pflicht/required MBN 10317		VeDoc-Relevanz/relevance MBN 10385		ESD-Kennzeichen/code A0598030 N	
	Art/ type	Anzahl Merkmale/ number of features		Anzahl/number of VPD-Ident-Nr./no.		
	DS	0	0	0	0	Farbe/color
DZ	0	0				
Lf.Aend./Supp.rev.	Lieferant/supplier KISSLING			Datum/date	Name/name	
				Pruef./check	2019-07-23	Domdey
ZGS	Auftr.-Nr./order no.	federf.Abt./resp.dep.		Norm/stand.	siehe	Smaragd
001	UAN25819	TE/ORC-I		Freig./rel.	siehe	Smaragd
Mercedes-Benz Benennung/title BATTERIEHAUPTSCHALTER BATTERY MAIN SWITCH ABSCHLIESSBAR						
Mercedes-Benz Sach-Nr./basic number			Masse/mass (kg)	System/system	Format/size	Blatt/sheet
A 001 545 57 08			0.650	NX 12.0	A3	
Keine Aenderung ohne Zustimmung der federfuehrenden Konstruktion. / Any alternations are subject to the approval of the design department.						

	Date	Name	mm	Scale	
Create	11.07.2019	Seege	←	1:2	
Edited	11.07.2019	Seege	General Tolerances		
Check	12.07.2019	Grind	DIN ISO 2768 cL		

Drawing No:	35-524-131-R-901
NSN:	

ECONIC SD BATTERY DISCONNECT INSTALL

Step 1. Set park brake, chock wheels, and disconnect batteries.

Step 2. Remove 2 bolts and remove battery disconnect switch shield.

Step 3. Remove bolts and remove battery cable clamp. (Figure 1)

Step 4. Remove 2 bolts and remove battery disconnect bracket assembly.

Step 5. Remove battery cables note orientation of cables. (Figure 2)

Step 6. Install updated battery disconnect into bracket assembly.

Step 7. Install battery cables on updated battery disconnect note orientation of cables. (Figure 3)

Step 8. Torque battery cables fasteners to 14ft-lbs.

Step 9. Install battery disconnect bracket assembly to battery box. (Figure 4)

Step 10. Install battery disconnect shield verify clearance between shield and battery cables.

Step 11. Engage battery disconnect verify function.

Figure 1



Figure 2

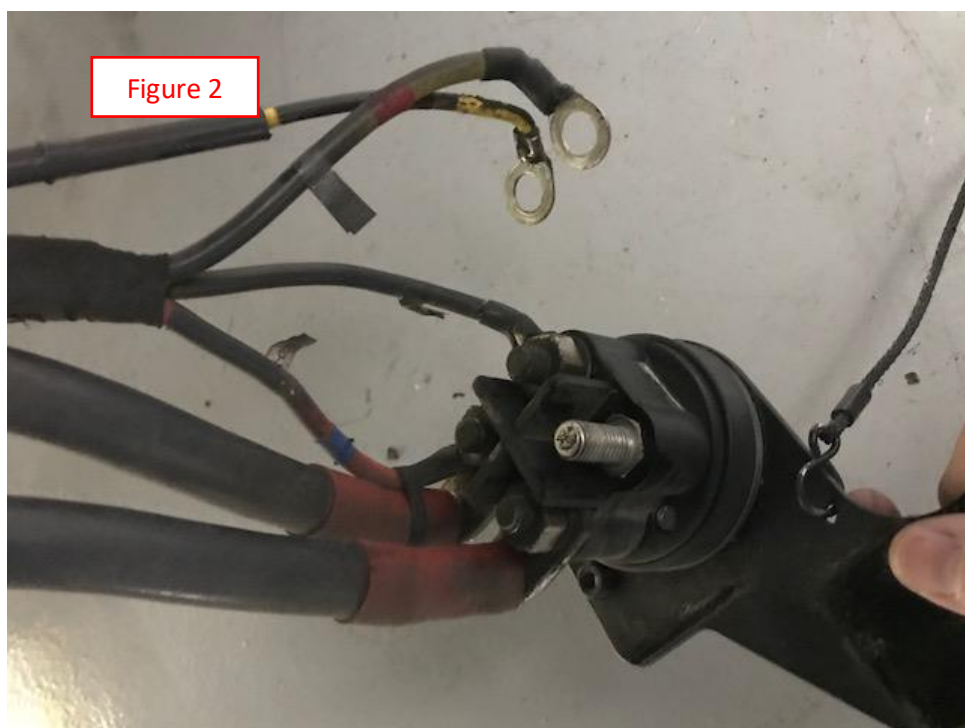


Figure 3



Figure 4

