

SS 1034765 EconicSD Marker Light on with Ignition off and Battery Switch on Retro-Fit

ISSUE:

This Retro-fit allows the customer to verify the battery switch is turned off by looking at the cab marker light. When the ignition switch is off and the battery switch is on, the cab marker light will be on. This makes it easy for the customer to scan the parking lot to verify all battery disconnect switches are in the off position. I have the Work Instructions attached and Part Numbers listed below.

Harness Part# A 956 540 29 05

Cav	Wir	SL-ID	Col	CSA	Mod	TermPartNr	SealPartNr
1	OWFS 1 b	WH	0,75	OWFS		A0035456826	
2	OWFS 1 a	WH	0,75	OWFS		A0035456826	
3							
4							
5	BEL 241 a	RD	1	BEL		A0035456826	
6	BEL 242 a	RD	1	BEL		A0035456826	
7	ABH 2 a	YE	2,5	ABH		A0035454326	
8	ABH 2 b	YE	2,5	ABH		A0035454326	
9	BEL 100 a	WH	0,75	BEL		A0035456826	
10	BEL 89 a	WH	0,75	BEL		A0035456826	
	TKS 1 a	WH	0,75	TKS		A0035456826	
11							
12							
13	ASD 220 a	RD	2,5	ASD		A0035454326	
	ESAR 1 a	RD	1,5	ESAR		A0035454326	
14	ASD 221 a	RD	2,5	ASD		A0035454326	
	ESAR 1 b	WH	1	ESAR		A0035454326	
	ESAR 1 c	WH	1	ESAR		A0035454326	
15	ASD 216 a	WH	0,75	ASD		A0035456826	
	ESAR 2 a	WH	0,5	ESAR		A0035456826	
16	ASD 215 a	WH	0,75	ASD		A0035456826	
	ESAR 2 b	WH	0,5	ESAR		A0035456826	
	ESAR 7 a	WH	0,5	ESAR		A0035456826	
17	CTP 1 a	RD	0,75	CTP		A0035456826	
18	CTP 1 b	RD	0,75	CTP		A0035454326	
	CTP 1 c	RD	0,75	CTP		A0035454326	
19	ZHE 110 a	RD	2,5	ZHE		A0035454326	
20	ZHE 110 b	RD	2,5	ZHE		A0035454326	
21							
22							
23							
24							
25							
26							
27							
28							

Installation instructions:
Remove the line BEL 242 a on X1. FA3 and connect together with the line BEL 334 a with the contact A 003 545 43 26 and pug back in the X1. FA3 Pin 6.

Ltg. BEL 334 a mit offenem Leitungsende.

Kontakt A0035454326 mit anliefern aber nicht anbringen!

Offenes Leitungsende:
BEL 332 a
BEL 0332 a

Kontakt A 0000 545 37 26 mit anliefern aber nicht anbringen!

Cav	Wir	SL-ID	Col	CSA	Mod	TermPartNr	SealPartNr
1	NA 15 d	YE	6	NA		A0005454026	
2	BEL 22 a	WH	0,5	BEL		A0075459926	
3							
4	BEL 07 a	BN	0,5	BEL		A0075459926	
5	NA 15 c	YE	6	NA		A0005454026	

Installation instructions:
Take line BEL 22 a on X1. K2A33 Pin 2 and connect it to the line BEL 332 a using contact A 0000 545 37 26. Both lines back in the X1. K2A33 Pin 2.

Take line BEL 07 a on X1. K2A33 Pin 4 and connect it to the line BEL 0332 a using contact A 0000 545 37 26. Both lines back in the X1. K2A33 Pin 4.

Cav	Wir	SL-ID	Col	CSA	Mod	TermPartNr	SealPartNr
1	BEL 333 a	WH	0,75			A0075459926	
2	BEL 332 a	WH	0,75			A0075459926	
3	BEL 334 a	WH	0,75			A0075459926	
4	BEL 0332 a	BN	0,75			A0075459926	
5	BEL 333 b	WH	0,75			A0075459926	

Cav	Wir	SL-ID	Col	CSA	Mod	TermPartNr	SealPartNr
1	BEL 191 b	WH	0,75	BEL		A0355452228	
2	BEL 192 b	WH	0,75	BEL		A0355452228	
3	BEL 021 a	BN	2,5	BEL		A0355452328	
4	VBF 1 a	WH	1	VBF		A0355452328	
	VBF 2 a	YE	1,5	VBF		A0355452328	
5	VBF 01 a	WH	1	VBF		A0355452328	
	VBF 02 a	WH	1,5	VBF		A0355452328	
6	BEL 26 a	WH	0,75	BEL		A0355452228	
7	BEL 26 a	WH	0,75	BEL		A0355452328	
	BEL 26 b	WH	0,75	BEL		A0355452328	
8	BEL 104 d	WH	0,75	BEL		A0355452228	
9							
10							
11	RKLF 2 a	WH	0,75	RKLF		A0355452228	
12							
13	ULL 22 d	WH	0,5	ULL		A0355452228	
	URL 32 a	WH	0,5	URL		A0355452228	
14	ABH 19 a	WH	1	ABH		A0355452228	
	RKL 2 a	WH	0,75	RKL		A0355452228	
15	ULL 31 a	WH	0,5	ULL		A0355452228	
	URL 22 f	WH	0,5	URL		A0355452228	
16	ULL 29 a	WH	0,5	ULL		A0355452228	
	URL 22 e	WH	0,5	URL		A0355452228	
17	BEL 23 c	WH	0,5	BEL		A0355452228	
18	ULL 22 c	WH	0,5	ULL		A0355452228	
	URL 26 a	WH	0,5	URL		A0355452228	

Offenes Leitungsende:
BEL 333 a
BEL 333 b

Kontakt A 035 545 23 28 mit anliefern aber nicht anbringen!

Installation instructions:
Remove the line BEL 26 a from connector X111 PIN 7 and disconnect BEL 26 b. connect the line BEL 26 a to cable BEL 333 a.

Connect cable BEL 333 b together with BEL 26 b at the contact A 035 545 23 28 and plug in pin 7 to the X111 connector.

Aenderungsindex / Aenderungsbeschreibung state of revision / revision text		ZGS	Auftrags-Nr. order no.	Bearb./auth. Datum/date	Pruef./check Datum/date	Norm./stand. Datum/date
Werkstoff(Endzustand)/material(fi.co.)		Oberfl.sch./surf.prot. DBL		Farbe/color		Bearb./auth.
				Dekor/decoration		Pruef./check
				Oberfl.ang./surf.texture		Norm./stand.
				Oberflaeche/surface (m) ²		Freig./rel.
Stammdaten/ masterdata	D-Pflicht/required MBN 10317		VeDoc-Relevanz/relevance MBN 10385		ESD-Kennzeichen/code	
	Art/ type	Anzahl Merkmale/ number of features	Anzahl/number of VPD-Ident-Nr./no.			
Manuell	DS	0	0	0	0	federf.Abt./resp.dep.
	DZ	0	0			
Allg.Toleranzen/gen.tolerances			gesetzl.Merkmal/st.fr.	ZGS	Auftr.-Nr./order no.	
Referenz-Nr./reference no.		Masse/mass (kg)	Benennung/title			
Masstab/scale 1 mm : 1 mm		System/system				
Tolerierung/tolerancing DIN 7167						
Mercedes-Benz		Daimler AG Schutzvermerk DIN ISO 16016 beachten!/ Refer to protection notice DIN ISO 16016!		Format/sz. A2+1	Blatt/sh. IdL	Sach-Nr./basic number A 956 540 29 05
Keine Aenderung ohne Zustimmung der federfuehrenden Konstruktion. / Any alterations are subject to the approval of the design department.						

ECONIC SD MARKER LIGHT RETRO-FIT

Step 1. Set park brake, chock wheels, and turn off battery disconnect switch.

Step 2. Remove cover for relay and connector panel behind driver seat.

Step 3. Install relay connector in relay panel location X1.K6A33. (Figure 1)

Step 4. Install circuit BEL 22 a and BEL 332 a using terminal A 0000 545 37 26

In connector X1.K2A33 pin 2 in relay panel.

Step 5. Install circuit BEL 07 a and circuit BEL 0332 a using terminal A0000 545 37 26

in connector X1.K2A33 pin 4 relay panel.

Step 6. Install circuit BEL 242 a and BEL 334 a using terminal A 003 545 43 26 in

connector X1.FA3 pin 6 in fuse panel.(Figure 2)

Step 7. Remove circuit BEL 26 a from connector X111 pin 7 and connect circuit 333 a

Using terminal A 035 545 23 28. (Figure 3)

Step 8. Connect circuit BEL 333 b and BEL 26 b with terminal A 035 545 23 28 and install

in connector X111 pin 7.

Step 9. Reverse Steps 3-1.



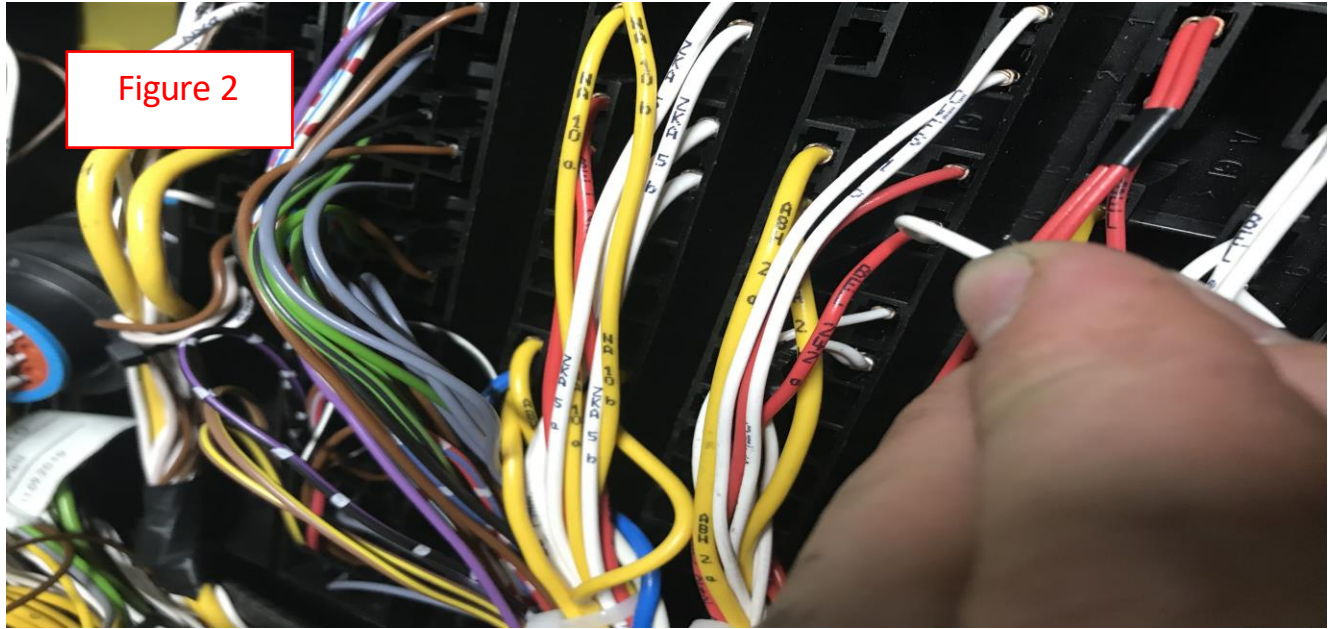


Figure 2

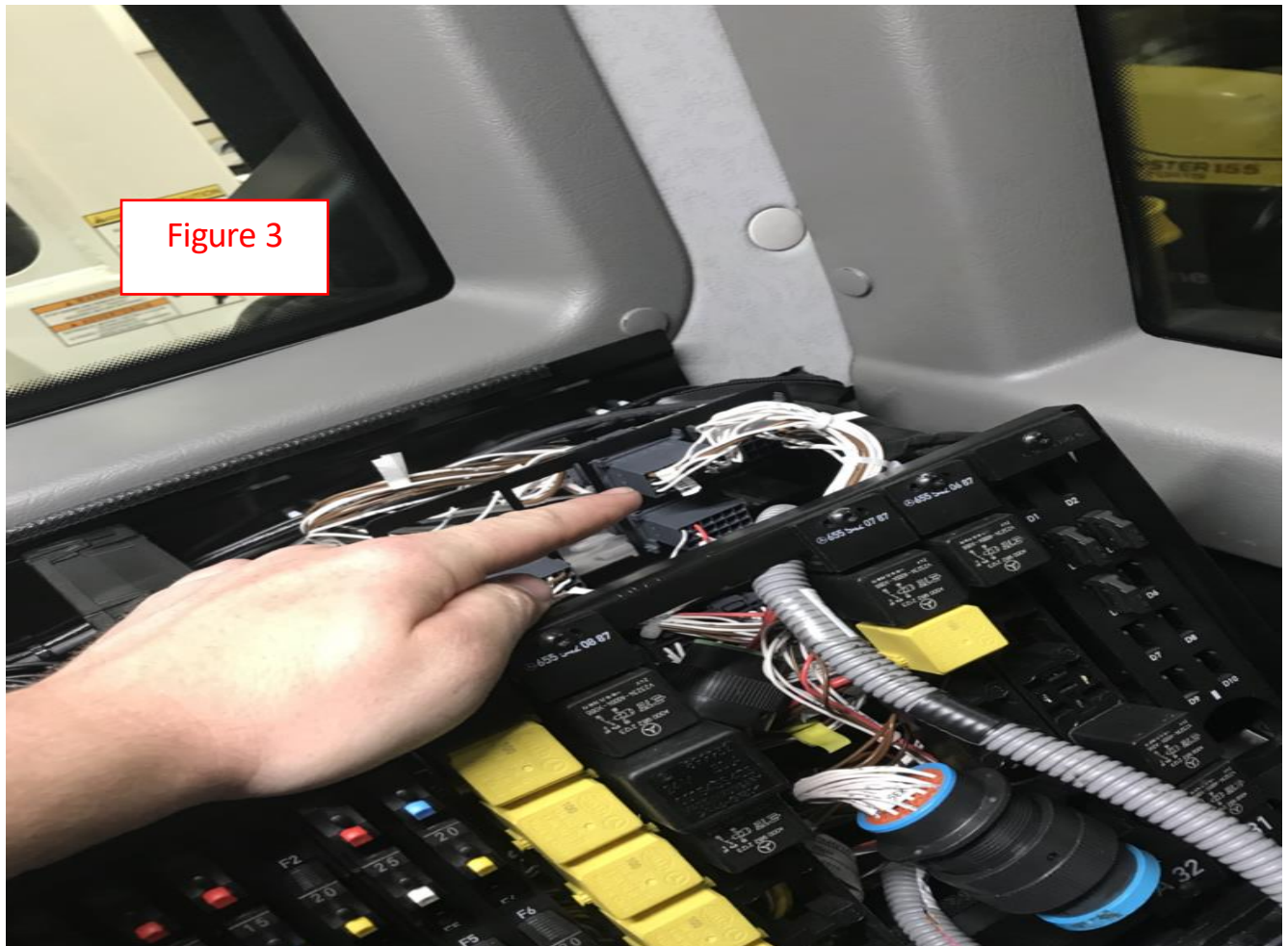


Figure 3

