

Subject: NOTIFICATION TO MOBILE DEVICE FOR ENGINE STALL WHEN OPERATING CLUTCH NOT WANTED	Bulletin No.: 16-003/20
	Last Issued: 08/21/2020

APPLICABLE MODEL(S)/VINS

2019-2020 Mazda3 with M/T (using Connected Service)

DESCRIPTION

Some customers may not be comfortable with being notified of an engine stall due to an error when operating the clutch pedal. When the engine stalls, the charging system warning light is illuminated and a vehicle malfunction notification is received through the MyMazda APP on the mobile device.

This is caused by improper control software of the PCM. To eliminate this concern, the PCM software has been modified to avoid the unnecessary malfunction notification.

REPAIR PROCEDURE

1. Verify customer concern.
2. Reprogram the PCM using the Mazda Diagnostic And Repair Software (MDARS). Refer to "MDARS - ECU Reprogramming Procedure".

NOTE:

- If the current calibration file name in the ECU FILENAME screen is the same as shown in the Calibration Files Information or with a later suffix, reprogramming is not necessary.
- After reprogramming, pending DTC P2610:00 [PCM] will be stored without the Check Engine Light ON. Start the engine and clear the DTC.
- If DTC U2120:00 or/and U2500:82 are stored and i-ACTIVSENSE warning light (amber) turns on after the reprogramming, refer to SA-036/19.

3. Clear the DTC, turn the ignition off, and get out of the vehicle.

4. Close and lock the door.

5. Wait for at least ten minutes.

6. Verify the repair by starting the engine and making sure that all warning lights are off.

NOTE: If any DTC should remain after performing a DTC erase, diagnose the DTC according to the instructions on MGSS.

CONSUMER NOTICE: The information and instructions in this bulletin are intended for use by skilled technicians. Mazda technicians utilize the proper tools/equipment and take training to correctly and safely maintain Mazda vehicles. These instructions should not be performed by "do-it-yourselfers." Customers should not assume this bulletin applies to their vehicle or that their vehicle will develop the described concern. To determine if the information applies, customers should contact their nearest authorized Mazda dealership. Mazda North American Operations reserves the right to alter the specifications and contents of this bulletin without obligation or advance notice. All rights reserved. No part of this bulletin may be reproduced in any form or by any means, electronic or mechanical---including photocopying and recording and the use of any kind of information storage and retrieval system ---without permission in writing.

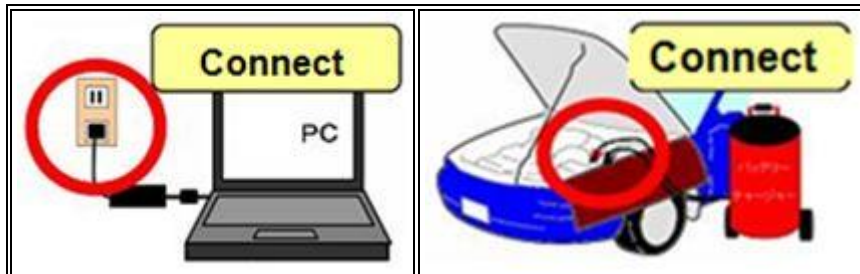
MDARS ECU Reprogramming Procedure

NOTE: This procedure explains a generic reprogramming for all Electrical Control Units (ECU) such as PCM, BCM, ESU, etc. Be aware that some sentences and screen images below mention a certain control unit such as "PCM" or "BCM" as an example.

ATTENTION: READ ALL CAUTIONS AND NOTES BEFORE AND AFTER REPROGRAMMING!

CAUTION:

- **A poor connection between the vehicle and M-MDS and/or low voltage may result in abnormal termination and/or data corruption. A low battery voltage may cause a reprogramming failure resulting in unexpected ECU replacement.**
- **Make sure that the following connections are firmly connected, then DO NOT touch the VCM and DLC cable to prevent noise and a poor connection.**
 - **Between the vehicle-side connector and the DLC cable**
 - **Between the PC-side connector and the USB port of the PC**
- **Connect an AC adaptor to the PC in order to minimize any voltage fluctuation during reprogramming. DO NOT use the vehicle battery as a power source for the PC.**
- **When reprogramming with MDARS, power consumption and voltage fluctuation are greater than with IDS. Connect the GR8 battery charger and use Manual Mode set to 14.5 volts and continuous charging to the vehicle to minimize any voltage fluctuation. DO NOT use any other charger.**

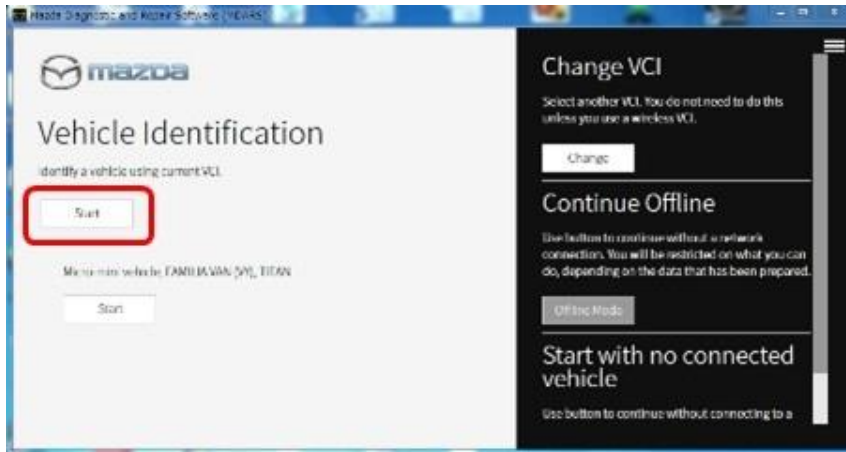
**BEFORE REPROGRAMMING****NOTE:**

- **Turn off all electrical loads, especially the A/C blower, audio system, rear defogger and headlights.**
- **Perform a self-test and verify no DTCs are stored. If any DTCs are stored, repair the concern and delete the DTCs.**
- **Disconnect any aftermarket accessories (non-genuine Mazda accessories).**
- **Terminate all programs other than MDARS on the PC. Running other programs may interfere with the MDARS performance, resulting in the PC freezing or other problems.**

CONSUMER NOTICE: The information and instructions in this bulletin are intended for use by skilled technicians. Mazda technicians utilize the proper tools/equipment and take training to correctly and safely maintain Mazda vehicles. These instructions should not be performed by "do-it-yourselfers." Customers should not assume this bulletin applies to their vehicle or that their vehicle will develop the described concern. To determine if the information applies, customers should contact their nearest authorized Mazda dealership. Mazda North American Operations reserves the right to alter the specifications and contents of this bulletin without obligation or advance notice. All rights reserved. No part of this bulletin may be reproduced in any form or by any means, electronic or mechanical---including photocopying and recording and the use of any kind of information storage and retrieval system ---without permission in writing.

- Perform reprogramming with a proper internet connection. When using a wireless network, make sure the connection is strong.
- Make sure to keep enough free space on the PC's hard disc. Insufficient free space (less than 1 GB) may result in the PC freezing during reprogramming.

1. Connect the M-MDS to the vehicle.
2. Launch the Mazda Diagnostic And Repair Software (MDARS).
3. Turn the ignition on, then click "Start".



4. Select the "toolbox" tab.



CONSUMER NOTICE: The information and instructions in this bulletin are intended for use by skilled technicians. Mazda technicians utilize the proper tools/equipment and take training to correctly and safely maintain Mazda vehicles. These instructions should not be performed by "do-it-yourselfers." Customers should not assume this bulletin applies to their vehicle or that their vehicle will develop the described concern. To determine if the information applies, customers should contact their nearest authorized Mazda dealership. Mazda North American Operations reserves the right to alter the specifications and contents of this bulletin without obligation or advance notice. All rights reserved. No part of this bulletin may be reproduced in any form or by any means, electronic or mechanical---including photocopying and recording and the use of any kind of information storage and retrieval system ---without permission in writing.

5. Select Work Support group.

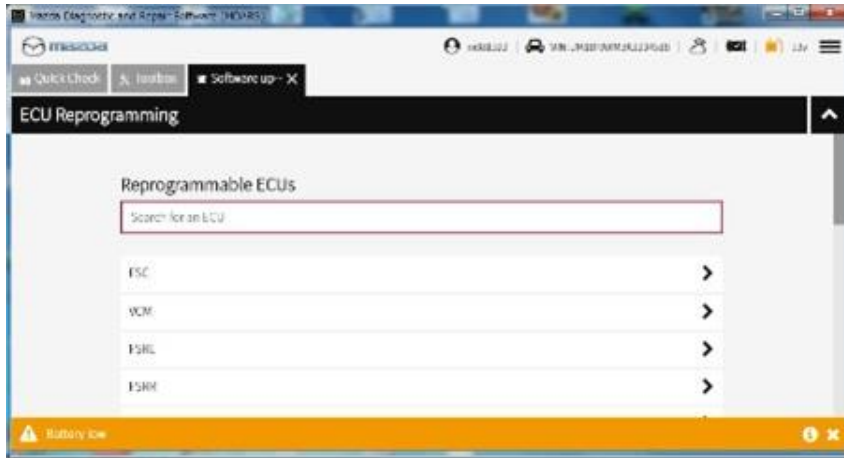


6. Select "Software update", then click "Run".

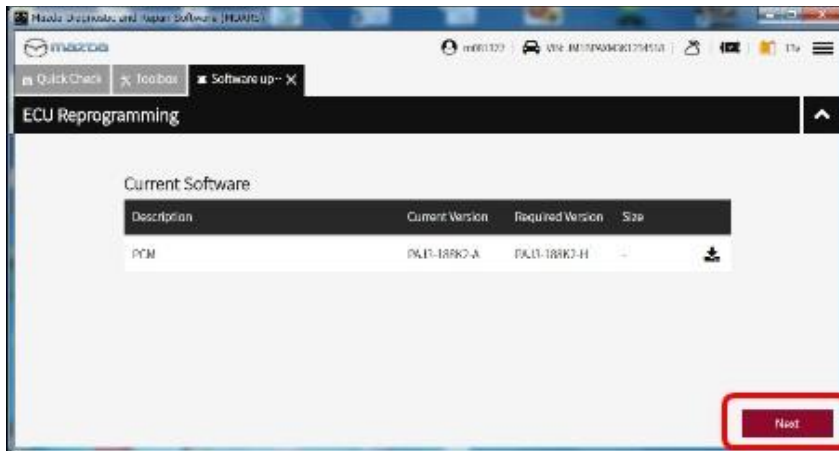


CONSUMER NOTICE: The information and instructions in this bulletin are intended for use by skilled technicians. Mazda technicians utilize the proper tools/equipment and take training to correctly and safely maintain Mazda vehicles. These instructions should not be performed by "do-it-yourselfers." Customers should not assume this bulletin applies to their vehicle or that their vehicle will develop the described concern. To determine if the information applies, customers should contact their nearest authorized Mazda dealership. Mazda North American Operations reserves the right to alter the specifications and contents of this bulletin without obligation or advance notice. All rights reserved. No part of this bulletin may be reproduced in any form or by any means, electronic or mechanical---including photocopying and recording and the use of any kind of information storage and retrieval system ---without permission in writing.

7. Select the ECU to be reprogrammed.



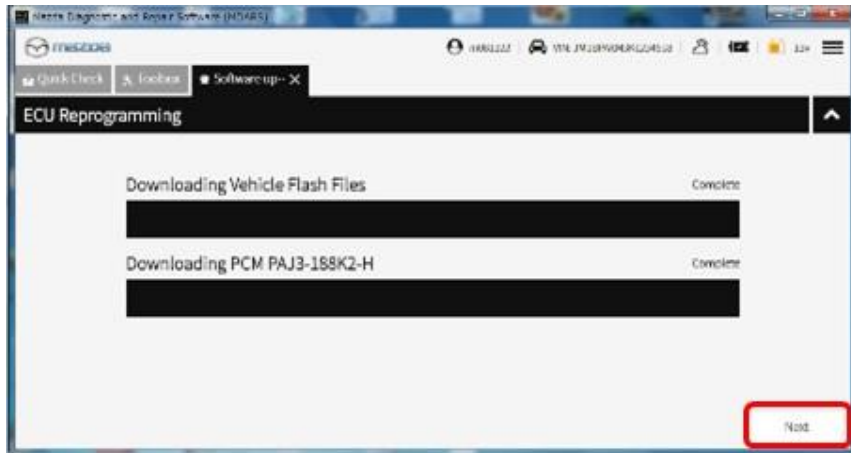
8. Confirm the current and new software versions, then click "Next".
NOTE: When reprogramming the BCM, two softwares will be shown.



CONSUMER NOTICE: The information and instructions in this bulletin are intended for use by skilled technicians. Mazda technicians utilize the proper tools/equipment and take training to correctly and safely maintain Mazda vehicles. These instructions should not be performed by "do-it-yourselfers." Customers should not assume this bulletin applies to their vehicle or that their vehicle will develop the described concern. To determine if the information applies, customers should contact their nearest authorized Mazda dealership. Mazda North American Operations reserves the right to alter the specifications and contents of this bulletin without obligation or advance notice. All rights reserved. No part of this bulletin may be reproduced in any form or by any means, electronic or mechanical---including photocopying and recording and the use of any kind of information storage and retrieval system ---without permission in writing.

9. Wait for the download, then click “Next”.

NOTE: When reprogramming the BCM, downloading will occur twice.

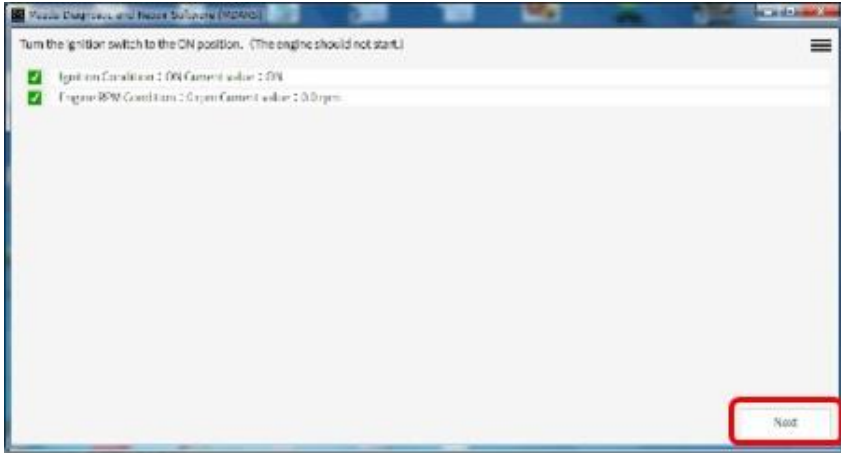


10. Read the screen instructions, then click “Next”.



CONSUMER NOTICE: The information and instructions in this bulletin are intended for use by skilled technicians. Mazda technicians utilize the proper tools/equipment and take training to correctly and safely maintain Mazda vehicles. These instructions should not be performed by “do-it-yourselfers.” Customers should not assume this bulletin applies to their vehicle or that their vehicle will develop the described concern. To determine if the information applies, customers should contact their nearest authorized Mazda dealership. Mazda North American Operations reserves the right to alter the specifications and contents of this bulletin without obligation or advance notice. All rights reserved. No part of this bulletin may be reproduced in any form or by any means, electronic or mechanical—including photocopying and recording and the use of any kind of information storage and retrieval system ---without permission in writing.

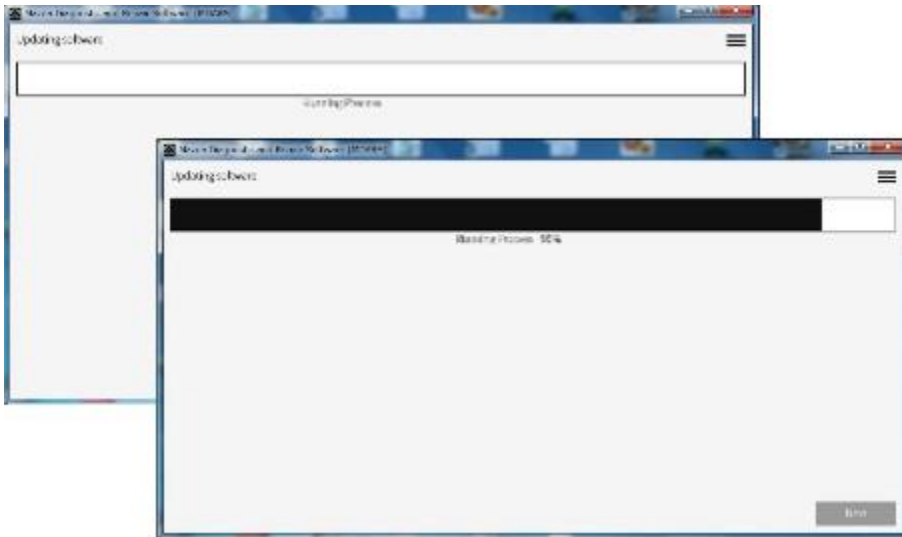
11. Follow the instructions on the screen, then click “Next”.



12. Wait for the reprogramming to complete.

NOTE:

- The progress bar will stay at 90% for 30 seconds. This is not a failure.
- When reprogramming the BCM, this process will occur twice.



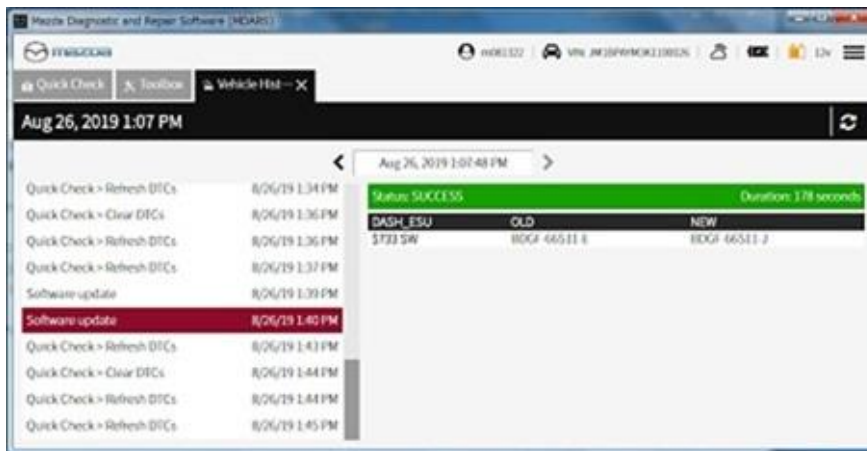
CONSUMER NOTICE: The information and instructions in this bulletin are intended for use by skilled technicians. Mazda technicians utilize the proper tools/equipment and take training to correctly and safely maintain Mazda vehicles. These instructions should not be performed by “do-it-yourselfers.” Customers should not assume this bulletin applies to their vehicle or that their vehicle will develop the described concern. To determine if the information applies, customers should contact their nearest authorized Mazda dealership. Mazda North American Operations reserves the right to alter the specifications and contents of this bulletin without obligation or advance notice. All rights reserved. No part of this bulletin may be reproduced in any form or by any means, electronic or mechanical---including photocopying and recording and the use of any kind of information storage and retrieval system ---without permission in writing.

AFTER REPROGRAMMING NOTE:

- Select "Vehicle History" under "Collect Diagnostic Information", then click "Run".



- Confirm the reprogramming on the screen and save the screen copy as a record.



CONSUMER NOTICE: The information and instructions in this bulletin are intended for use by skilled technicians. Mazda technicians utilize the proper tools/equipment and take training to correctly and safely maintain Mazda vehicles. These instructions should not be performed by "do-it-yourselfers." Customers should not assume this bulletin applies to their vehicle or that their vehicle will develop the described concern. To determine if the information applies, customers should contact their nearest authorized Mazda dealership. Mazda North American Operations reserves the right to alter the specifications and contents of this bulletin without obligation or advance notice. All rights reserved. No part of this bulletin may be reproduced in any form or by any means, electronic or mechanical---including photocopying and recording and the use of any kind of information storage and retrieval system ---without permission in writing.

CALIBRATION INFORMATION

Japan built

Engine	Transmission	Drive	File Name	Note
2.0L	M/T	2WD	PAJ2-188K2-J	Mitsubishi
			PAJ3-188K2-K	Denso
2.5L	M/T	2WD	PX58-188K2-L	Mitsubishi
			PX59-188K2-L	Denso

Mexico built

2.0L	M/T	2WD	PAK1-188K2-E	Mitsubishi
			PAK2-188K2-F	Denso

WARRANTY INFORMATION

NOTE:

- This warranty information applies only to verified customer complaints on vehicles eligible for warranty repair.
- This repair will be covered under Federal Emission Warranty or CA Emission Warranty (short term).
- Additional diagnostic time cannot be claimed for this repair.

Warranty Type	A
Symptom Code	64
Damage Code	9W
Part Number Main Cause	5555-18-881
Quantity	0
Operation Number / Labor Hours:	XXS4EXFX / 0.3 Hrs.

CONSUMER NOTICE: The information and instructions in this bulletin are intended for use by skilled technicians. Mazda technicians utilize the proper tools/equipment and take training to correctly and safely maintain Mazda vehicles. These instructions should not be performed by "do-it-yourselfers." Customers should not assume this bulletin applies to their vehicle or that their vehicle will develop the described concern. To determine if the information applies, customers should contact their nearest authorized Mazda dealership. Mazda North American Operations reserves the right to alter the specifications and contents of this bulletin without obligation or advance notice. All rights reserved. No part of this bulletin may be reproduced in any form or by any means, electronic or mechanical---including photocopying and recording and the use of any kind of information storage and retrieval system ---without permission in writing.