

08/13/2020  
FTL CAL 54-011

**Subject: How to program the IPPC module  
using DiagnosticLink**

**Models Affected: Freightliner New Cascadia vehicles built from  
September 15, 2019 through August 30, 2020**

Our records indicate that you are the owner of certain vehicles, and therefore DTNA has decided to share the following documentation with you.

Please see the attached instructions in this email. We hope you find this information helpful.

08/13/2020  
FTL CAL 54-011

## Joint Customer Advisory Letter and Detroit Service Information Bulletin

**Subject: How to program the IPPC module using DiagnosticLink**

**Models Affected: Freightliner New Cascadia vehicles built from September 15, 2019 through August 30, 2020**



### Service Information Bulletin

**NUMBER: S.M. REF.: ENGINE: HDEP DATE: August 2020**

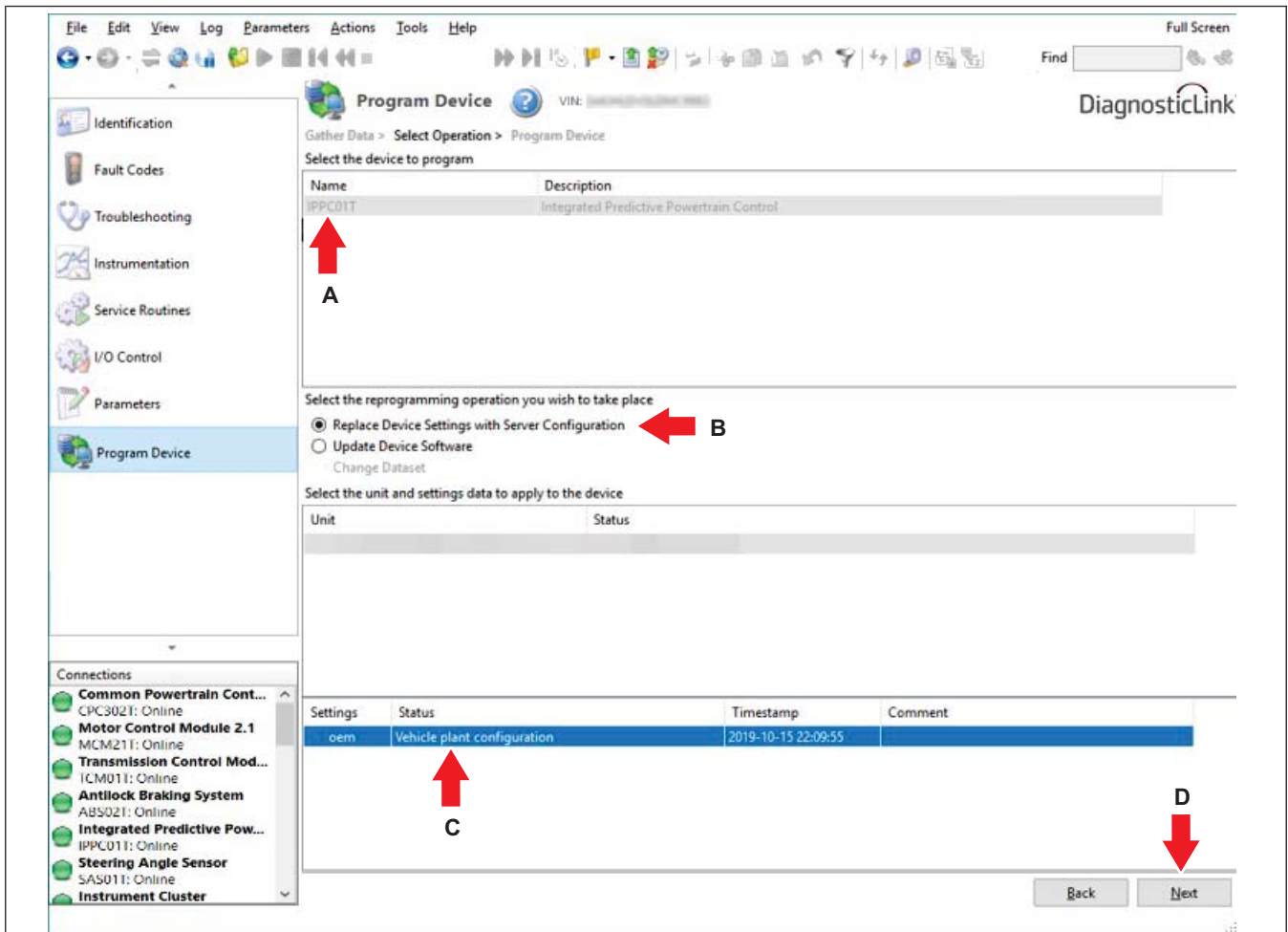
#### ADDITIONS, REVISIONS, OR UPDATES

Publication Number	Platform	Section Title	Change
DDC-SVC-MAN-0191	DD Platform	How to program the IPPC module using DiagnosticLink.	This is an updated procedure to be added behind the "How to retrieve DDEC reports" section in the manual.
DDC-SVC-MAN-0211		How to program the IPPC module using DiagnosticLink.	

### Work Instructions

1. Park the vehicle on a level surface, shut down the engine, and set the parking brake. Chock the tires.
2. Connect the power supply to the computer before programming.
3. Ensure that the computer does not go into sleep mode or power down during programming. (This may cause an increased time to program the module.)
4. Connect DiagnosticLink.
5. Turn the ignition on, Key ON Engine OFF.
6. Go to the "Program Device" tab on the left side of the screen.
7. Connect to the server to download the latest software.
8. In the center box select IPPC01T as the device to program, check the circle for "Replace device settings with Server Configuration", click on "Vehicle plant configuration" and then click next.

08/13/2020  
FTL CAL 54-011



08/13/2020

f120807

- A. Select IPPC01T as the device to program.
- B. Check the circle for "Replace device settings with Server Configuration."
- C. Click on "Vehicle plant configuration."
- D. Click the "Next" button.

**Fig. 1, Program Device Screen**

9. A popup window with a warning will show; disregard this message and click "OK."

08/13/2020  
FTL CAL 54-011

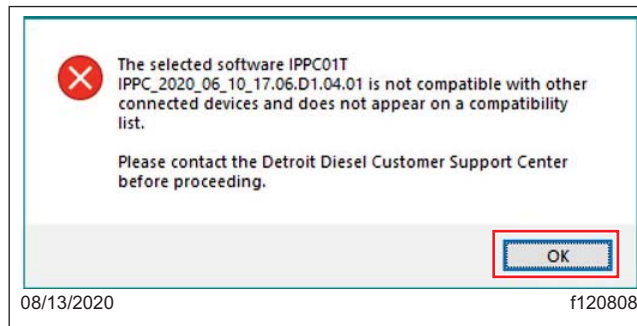


Fig. 2, Compatibility Pop-up Warning.

10. The screen will populate to start programming the IPPC01T module. Highlighted is the current IPPC software (In this example is D1.04.00) and the target IPPC software (In this example is D1.04.01). Click the “Start” button to proceed with programming.

Click the “Start” button to proceed with programming.

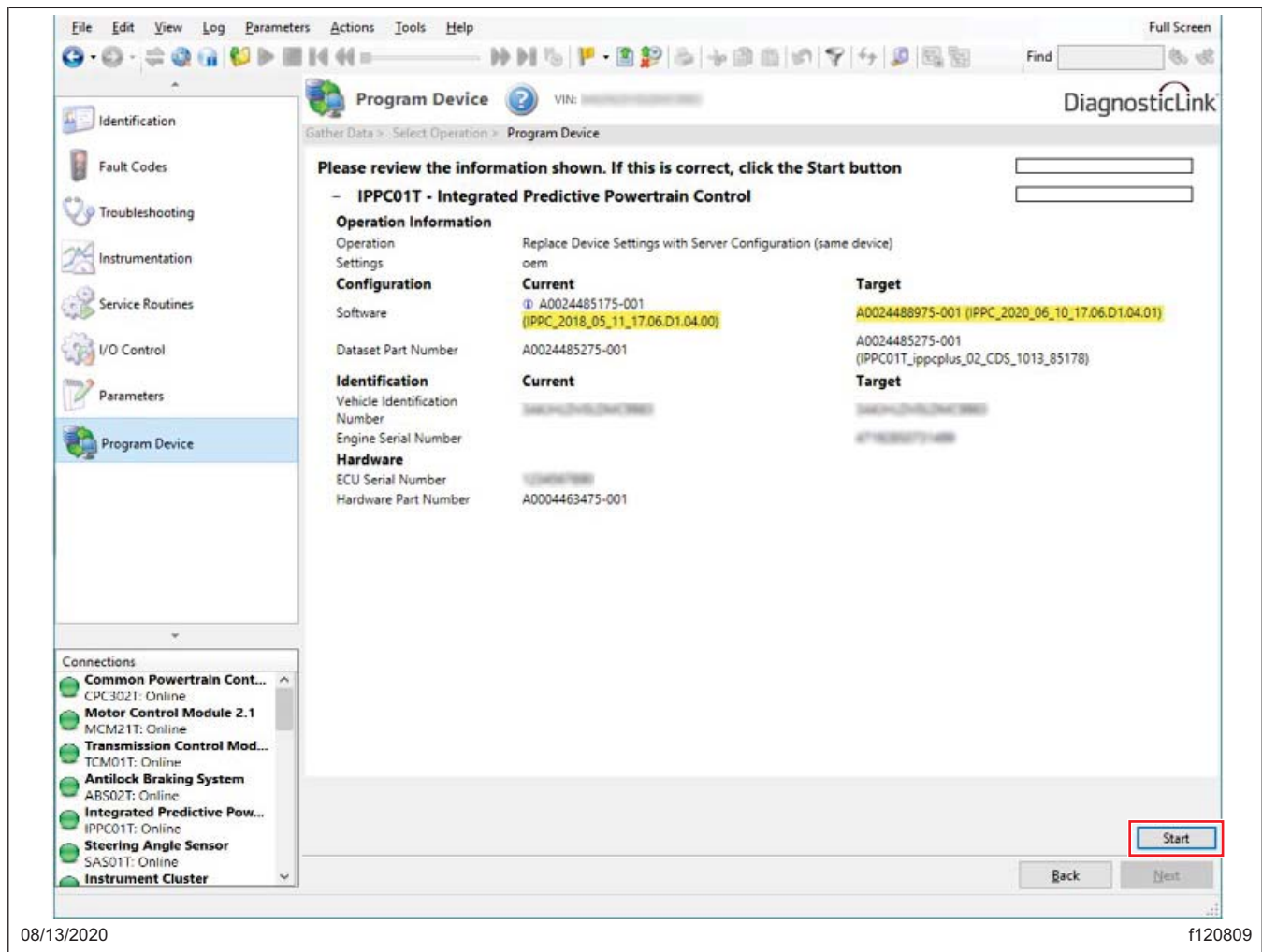


Fig. 3, Populated Program Device Screen

08/13/2020  
FTL CAL 54-011

11. During the programming event the progress boxes in the top right hand corner will increase.

The “Flash firmware” highlighted may stay at 99% for a longer period of time (3 minutes). This is normal and does not indicate an error in the programming event.

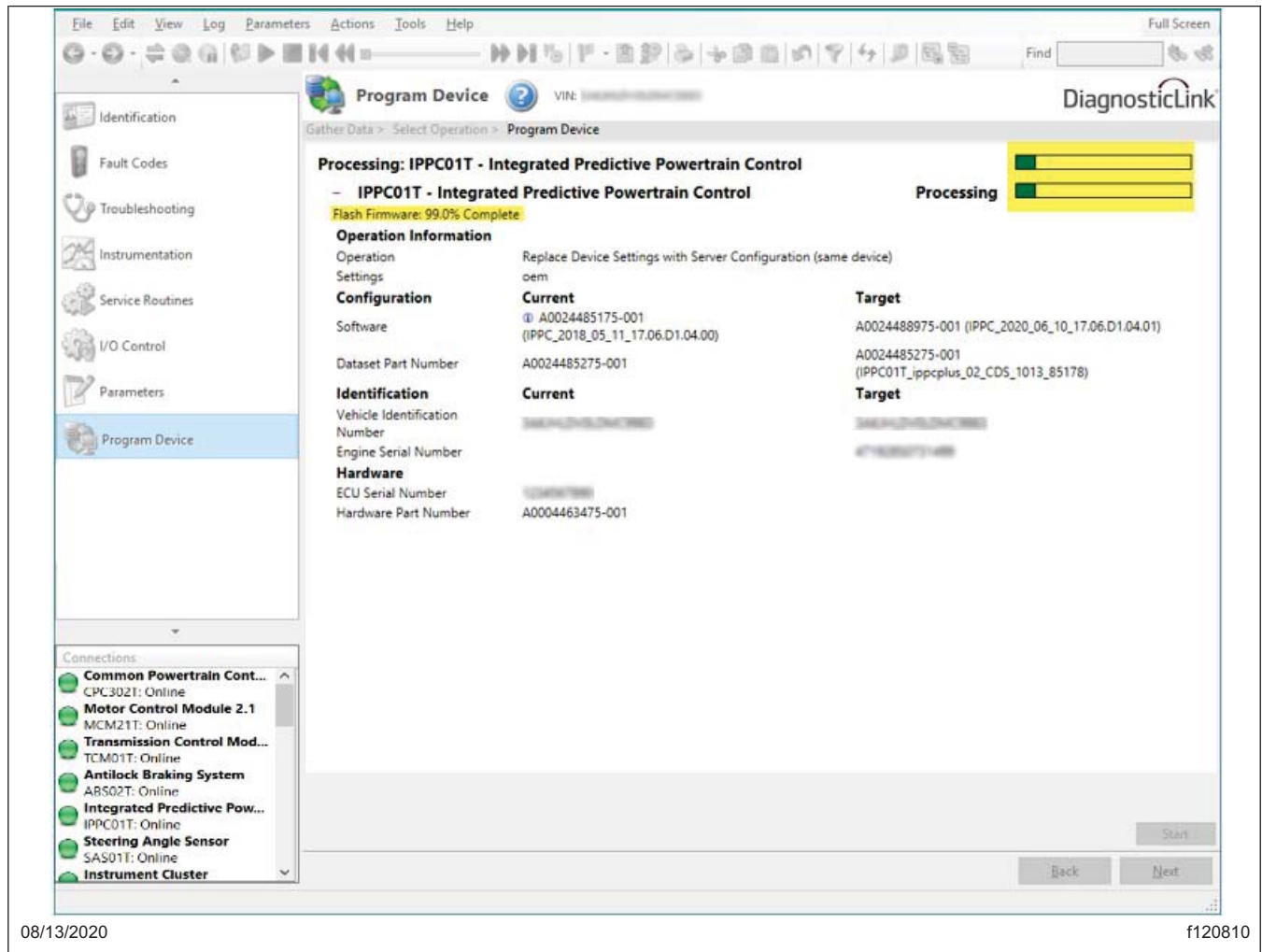


Fig. 4, Programming In Progress

12. Another popup window with a warning will appear; disregard this message as well and click “OK.”

08/13/2020  
FTL CAL 54-011

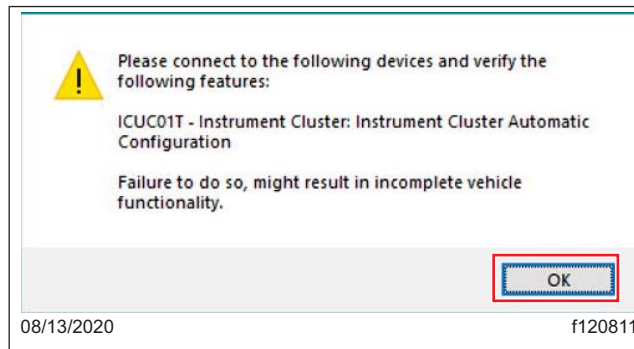


Fig. 5, ICUC01T Popup Warning

13. This screen will populate showing in the top right hand corner that the programming event has completed successfully. Click "Finish."

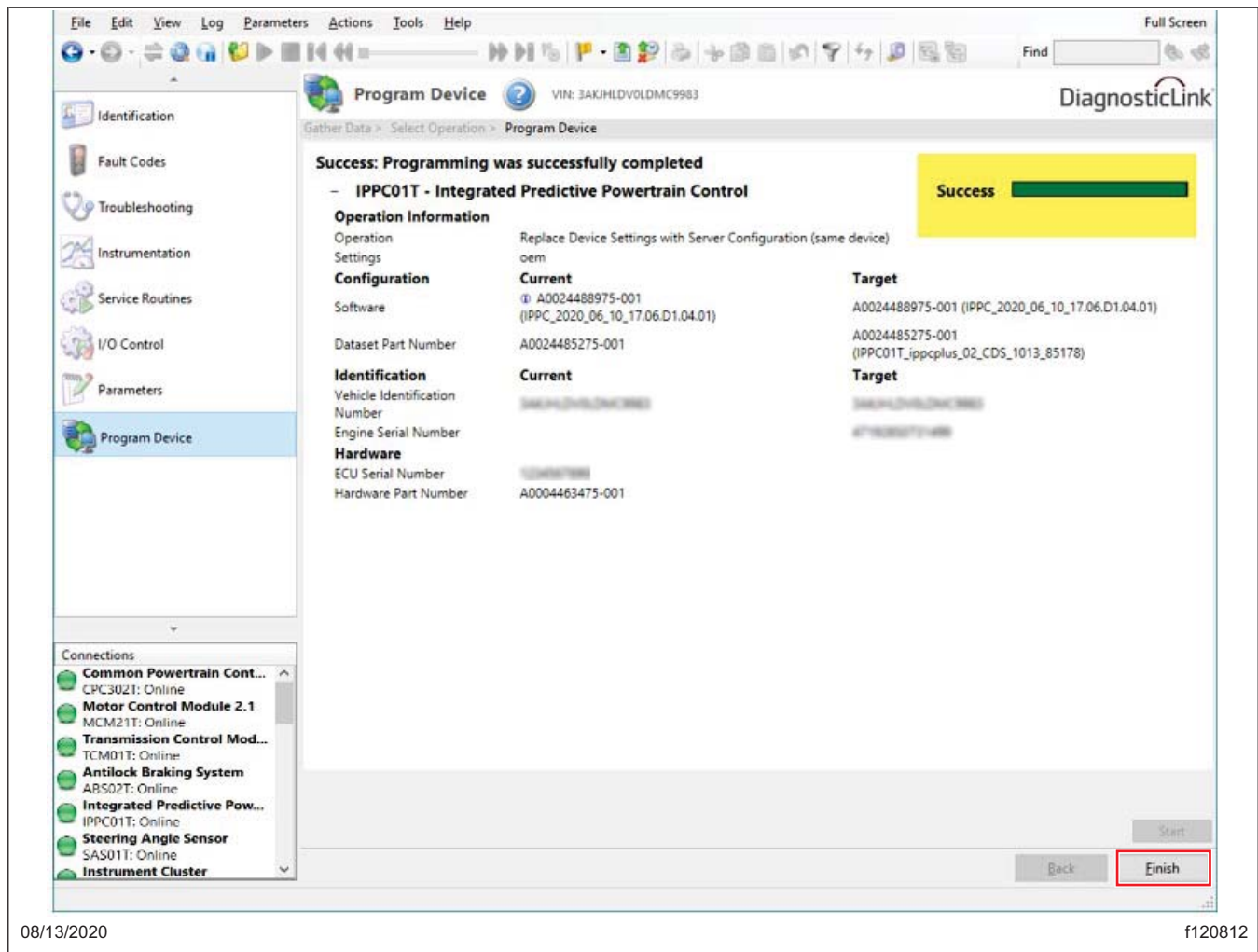
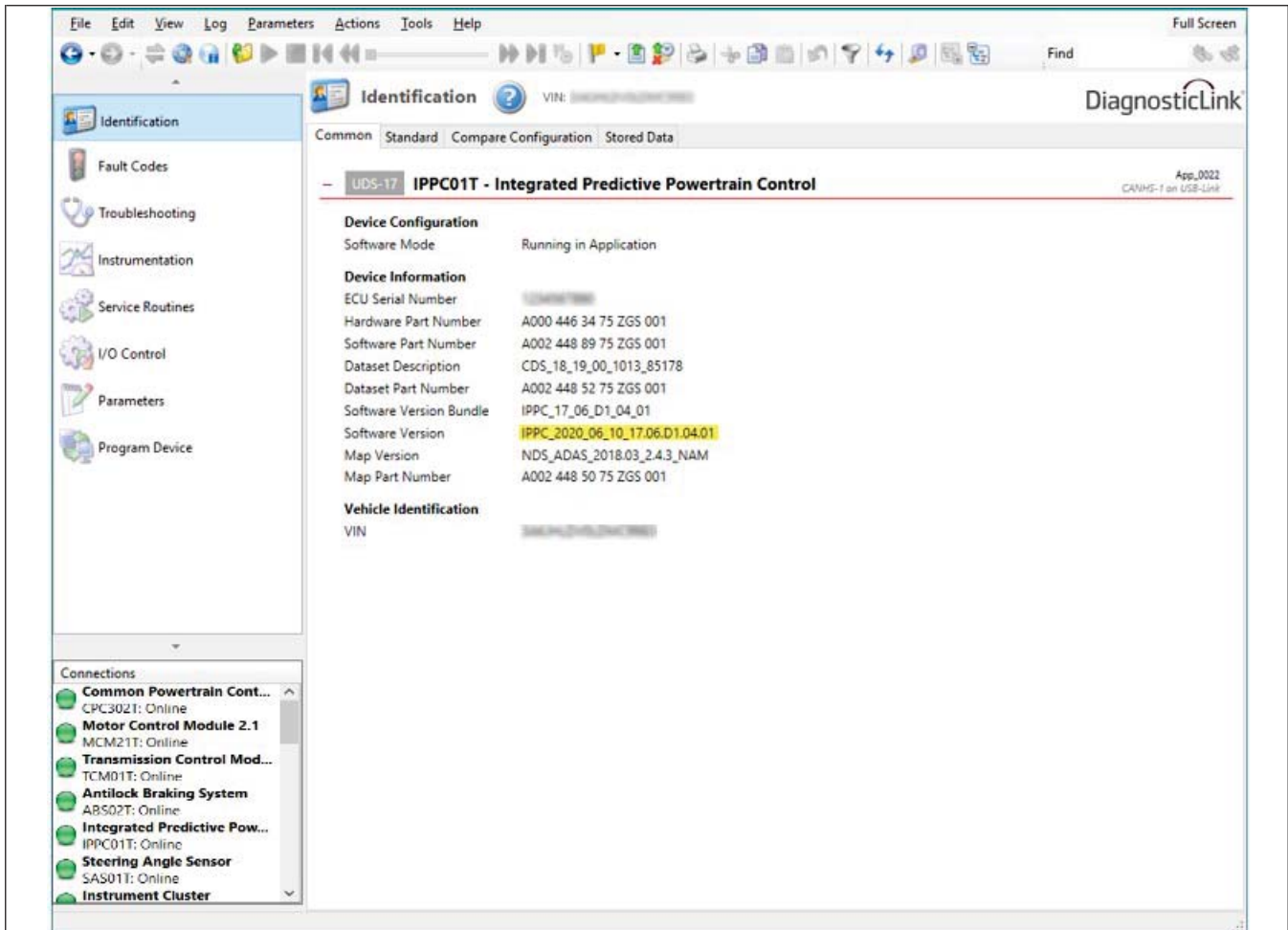


Fig. 6, Programming Successful Screen

08/13/2020  
FTL CAL 54-011

14. Proceed to the "Identification" tab on the left side, scroll down to the IPPC and confirm the software update (In this example is D1.04.01).



08/13/2020

f120813

Fig. 7, Checking the Software Version to Confirm the Software Update