



Service Bulletin

Bulletin No.: 20-NA-144

Date: July, 2020

TECHNICAL

Subject: Check Engine Light Illuminated, DTC P0606 Set in Engine Control Module

Brand:	Model:	Model Year:		VIN:		Engine:	Transmission:
		from	to	from	to		
Cadillac	ATS	2016	2017	—	—	2.0L (LTG)	All
	CTS	2016	2017				
Chevrolet	Cruze	2016	2017			1.4L (LE2)	
	Malibu	2016	2017			2.0L (LTG)	

Involved Region or Country	North America
Additional Options (RPOs)	Equipped with Engine Control Stop/Start System (RPO KL9)
Condition	<p>Some customers may comment on one or more of the following conditions:</p> <ul style="list-style-type: none">• Check Engine Light illuminated• No start• Reduced propulsion• Stall <p>During diagnosis, a technician may find DTC P0606: Control Module Processor Performance set in the Engine Control Module.</p>
Cause	The cause of the condition may be a software anomaly in the Engine Control Module.
Correction	If you encounter a vehicle with the above condition, DO NOT replace the Engine Control Module at this time. Follow the Service Procedure listed below to reprogram the ECM.

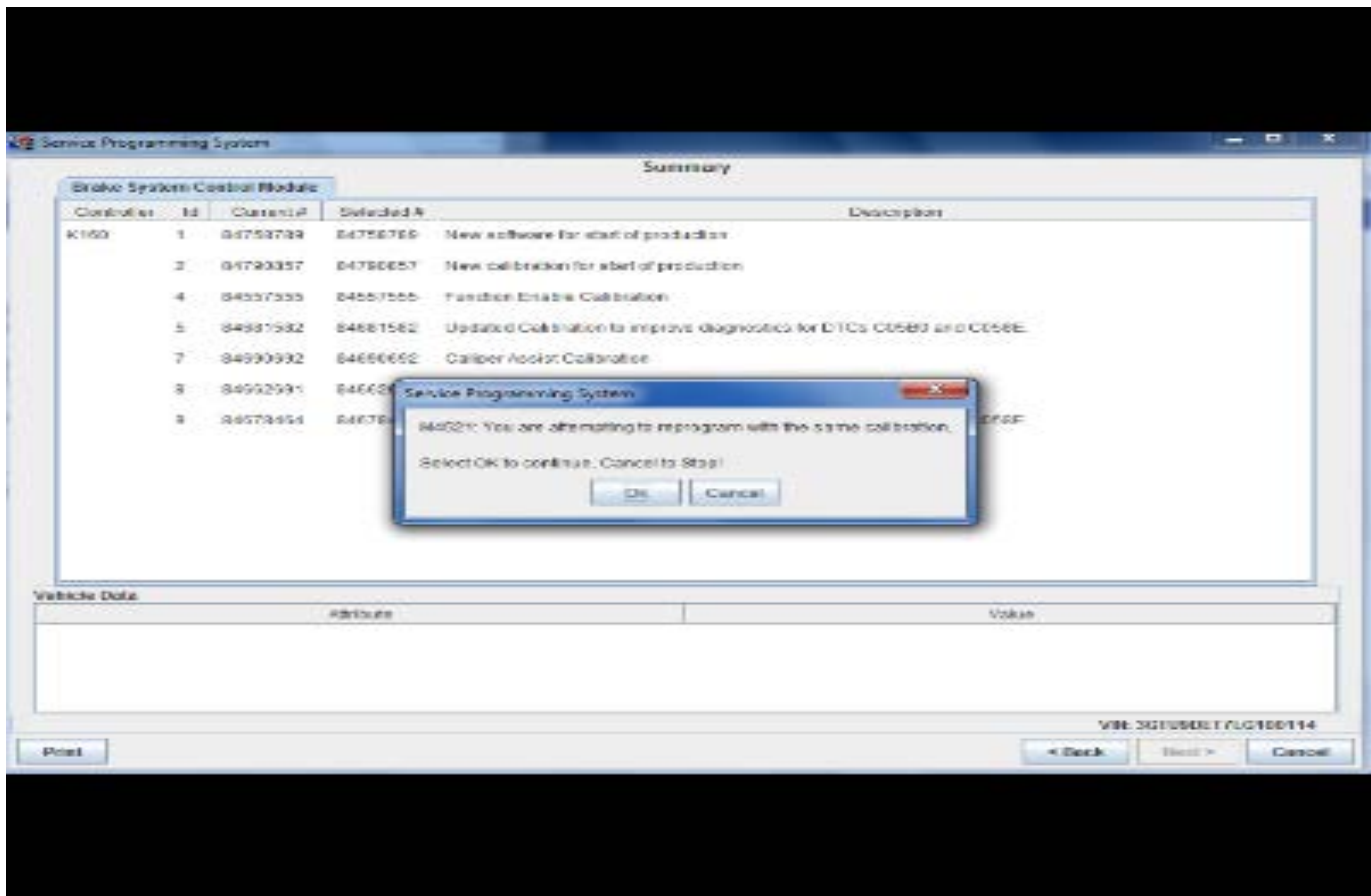
Service Procedure

Caution: Before downloading the update files, be sure the computer is connected to the internet through a network cable (hardwired). DO NOT DOWNLOAD or install the files wirelessly. If there is an interruption during programming, programming failure or control module damage may occur.

Note: Carefully read and follow the instructions below.

- Ensure the programming tool is equipped with the latest software and is securely connected to the data link connector. If there is an interruption during programming, programming failure or control module damage may occur.
- Stable battery voltage is critical during programming. Any fluctuation, spiking, over voltage or loss of voltage will interrupt programming. Install a GM Authorized Programming Support Tool to maintain system voltage. Refer to www.gmdesolutions.com for further information. If not available, connect a fully charged 12V jumper or booster pack disconnected from the AC voltage supply. DO NOT connect a battery charger.

- Turn OFF or disable systems that may put a load on the vehicles battery such as; interior lights, exterior lights (including daytime running lights), HVAC, radio, etc.
- Clear DTCs after programming is complete. Clearing powertrain DTCs will set the Inspection/Maintenance (I/M) system status indicators to NO.



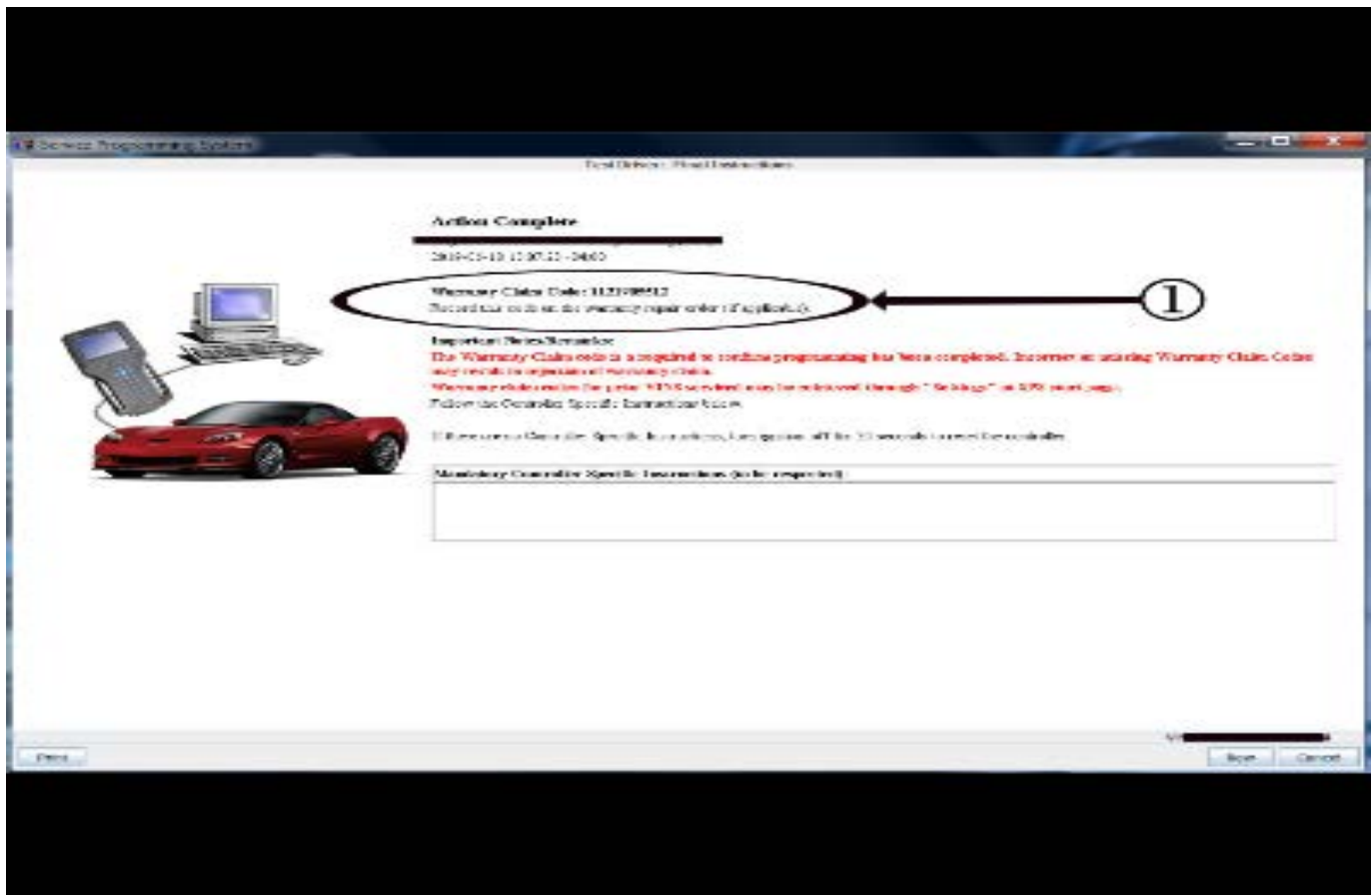
5431207

Important: TIS2WEB screen shown. Techline Connect screen is similar and will be included soon.

Important: If the Same Calibration/Software Warning is noted on the SPS screen, select OK and follow screen instructions. After a successful programming event, the WCC is located in the Service Programming

System dialogue box of the SPS Summary screen. No further action is required. Refer to the Warranty Information section of this bulletin.

1. Reprogram the Engine Control Module. Refer to *K20 Engine Control Module: Programming and Setup* in SI. Modify as required (e.g., select x module from the controller screen). Then provide step-by-step instructions or refer to SI procedure.



5431209

Important: TIS2WEB screen shown. Techline Connect screen is similar and will be included soon.

Important: To avoid warranty transaction rejections, you **MUST** record the warranty claim code provided on the SPS Warranty Claim Code (WCC) screen on the job card. Refer to callout 1 above for the location of the WCC on the SPS screen.

- Record the SPS Warranty Claim Code on the job card for warranty transaction submission.

Warranty Information

Important: Warranty coverage code E2 applies for this module programming event. ECM reprogramming is covered for 8 years/80,000 miles (U.S.) or 8 years/130,000 km (Canada).

For vehicles repaired under the Base Emission Warranty coverage (Code E), use the following labor operation. Reference the Applicable Warranties section of Investigate Vehicle History (IVH) for coverage information.

Labor Operation	Description	Labor Time
2886888*	Engine Control Module Reprogramming with SPS for DTC P0606	0.3 hr
Add	Diagnosis Time	0.1–0.3 hr
Add	Relearn OAT Sensor - LCV, LGX or LTG	0.2 hr

*This is a unique Labor Operation for bulletin use only.

Important: To avoid warranty transaction rejections, carefully read and follow the instructions below:

- The SPS Warranty Claim Code must be accurately entered in the "SPS Warranty Claim Code" field of the transaction.
- When more than one Warranty Claim Code is generated for a programming event, it is required to document all Warranty Claim Codes in the "Correction" field on the job card. Dealers must also enter one of the codes in the "SPS Warranty Claim Code" field of the transaction, otherwise the transaction will reject. It is best practice to enter the FINAL code provided by SPS.

Warranty Claim Code Information Retrieval

If the SPS Warranty Claim Code was not recorded on the Job Card, the code can be retrieved in the SPS system as follows:

1. Open TIS on the computer used to program the vehicle.
2. Select and start SPS.
3. Select Settings.
4. Select the Warranty Claim Code tab.

The VIN, Warranty Claim Code and Date/Time will be listed on a roster of recent programming events. If the code is retrievable, dealers should resubmit the transaction making sure to include the code in the SPS Warranty Claim Code field.

Version	1
Modified	Released July 14, 2020

