



# Service Bulletin


Bulletin No.: 19-NA-277

Date: July, 2020

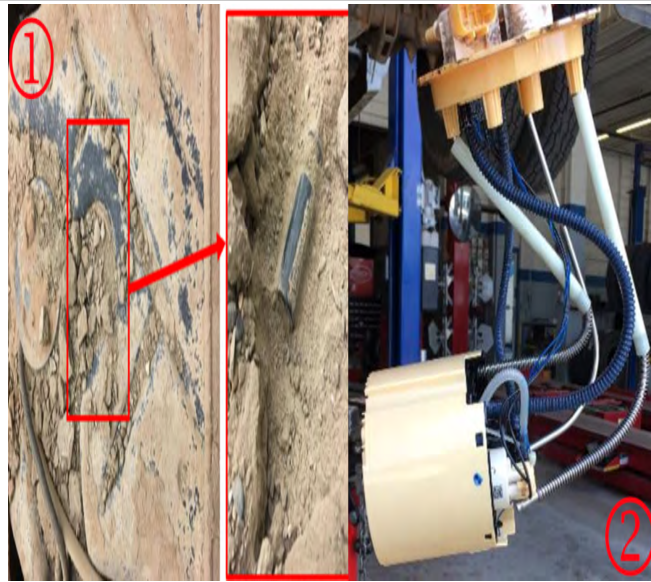
## TECHNICAL

**Subject: Poor Fuel Transfer and/or Rear Fuel Tank Collapsed, DTCs P2635, P2636, P2A00 and/or P026D Set**

Brand:	Model:	Model Year:		Breakpoint:		Engine:	Transmission:			
		from	to	from	to					
Chevrolet	Silverado	2015	2018	-	-	Equipped with 6.6L Engine (RPOs LML, L5P)	-			
	Silverado 2500/3500	2019	2019			Equipped with 6.6L Engine (RPO L5P)				
GMC	Sierra	2015	2018			-		-	Equipped with 6.6L Engine (RPOs LML, L5P)	-
	Sierra 2500/3500	2019	2019						Equipped with 6.6L Engine (RPO L5P)	

<b>Involved Region or Country</b>	North America
<b>Additional Options (RPOs)</b>	Equipped with FUEL TANK-DUAL TANK, FRONT TANK 23.5 GAL (89L) REAR TANK 40 GAL (151L) (RPO N2N)
<b>Condition</b>	 <p style="text-align: right; font-size: small;">5396125</p> <p>Some customers may comment on the rear fuel tank collapsed, as shown in the picture above.</p> <p>Technicians may find one or more of the following DTCs set.</p> <ul style="list-style-type: none"> <li>• P2635 - Fuel Pump Flow Performance</li> <li>• P2636 - Fuel Pump 2 Flow Insufficient</li> <li>• P2A00 - HO2S Performance Sensor 1</li> <li>• P026D - Injection Quantity Too High</li> </ul>

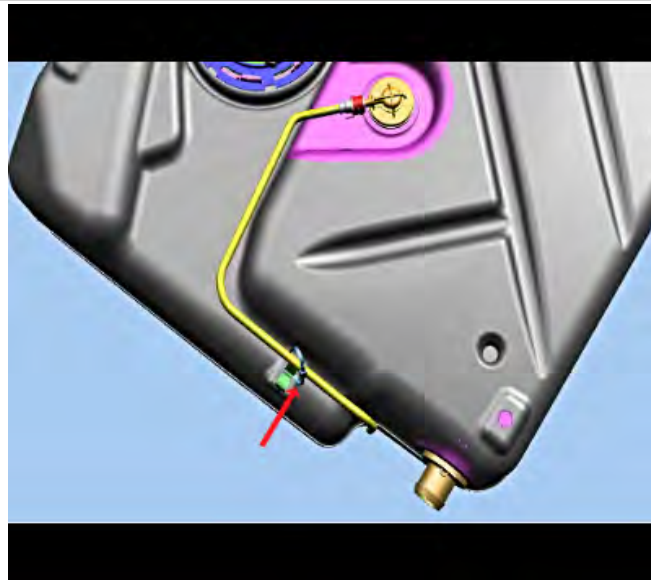
Cause



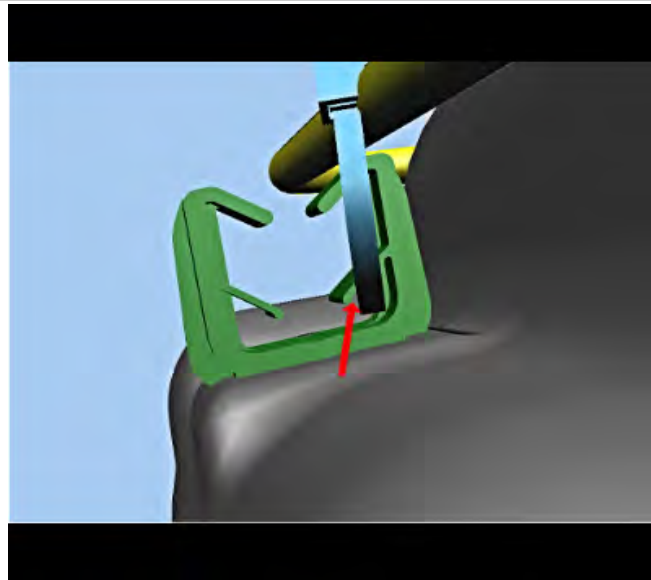
5397974

This condition may be caused by dirt and/or debris collecting on the top of the rear tank (1), plugging the vent causing the sending unit to draw air and bend the fuel tank fuel pump (2), as shown in the picture above.

Correction



5620833



5620834

Replace the fuel tank, rear tank module (pump if equipped) including installing hose PN# 84788703 to the vent and route/secure with a zip tie under the lower barb, as shown in the pictures above, and following the procedure listed below.

**Service Procedure**

Refer to *Fuel Tank Replacement*, *Fuel Tank Fuel Pump Module Replacement* and *Fuel/Water Separator Outlet Hose Replacement* in SI.

**Parts Information**

Use the VIN and refer to the electronic parts catalog (EPC) for obtaining the correct P/N's for the Fuel Tank and Fuel Tank Fuel Pump Module.

Causal Part	Description	Part Number	Qty
X	HOSE, EVAP EMIS	84788703	1

## Warranty Information

For vehicles repaired under the Bumper-to-Bumper coverage (Canada Base Warranty coverage), use the following labor operation. Reference the Applicable Warranties section of Investigate Vehicle History (IVH) for coverage information.

Labor Operation	Description	Labor Time
4087288*	Fuel Tank and Fuel Module Replacement	1.5 hrs.
*This is a unique Labor Operation for Bulletin use only.		

<b>Version</b>	4
<b>Modified</b>	Released January 08, 2020 Revised May 08, 2020 – Updated the Correction, Parts and Warranty Information and added P2636 to Additional Keywords. Revised June 15, 2020 – Updated the Correction, Service Procedure, Parts and Warranty Information. Revised July 21, 2020 – Added verbiage under Parts Information and updated the warranty Information.

Additional Keywords: P2066, P2636

