

## Passport Solar Prep Wiring

The information and instructions in a Keystone Service Bulletin (KSB) are intended to inform RV dealership Service Managers/Technicians of situations that may occur with some Recreational vehicles so dealership personnel can perform proper and efficient service. KSB's are intended to be used by trained RV technicians with the knowledge, tools and equipment to do the job properly and safely, not "do-it-yourselfers".

- Information is not presented as a repair guaranteed to be covered by warranty.
- Keystone's P & P (Policy & Procedures) must be followed for any requested warranty work.
- Do not assume this repair is covered by warranty.
- Not every unit listed requires a repair.

It has been determined the vehicles in this KSB population may have been manufactured without the 14-2 Romex inverter wire from the bedroom receptacle to the inverter prep in the front pass through compartment. Only units that are being set up with an inverter will require this repair, otherwise the unit works as designed.

**Models Included:** 2020 Passport: 199ML, 239ML, 240BH, 267BH, 3400QD

**Serial Number Range:** MK410012 - MK410098

**Local parts:**  
– 14-2 Romex wiring – Wiring Connectors – 1-Gang Electrical Box  
– 15 Amp Receptacle – Receptacle Plate

**Tools Required:** – Screw gun – Screwdriver – Wire Cutter/Stripper

**When performing this KSB, please make certain that appropriate Personal Protective Equipment (PPE) is used.**

This remedy is only required when installing an aftermarket inverter. The remedy is to locate the front off door side (left side) receptacle next to the bed. Remove the existing receptacle and install a 1-gang electrical box. Determine which wire runs from the power center and add a 14-2 Romex from the power center wire to the aftermarket inverter being installed. Next run a 14-2 Romex wire from the output side of the inverter back to the 1-gang box previously installed and attach it to a new 15 amp receptacle to complete the circuit.

### **REPAIR INSTRUCTIONS**

#### **Step 1**

Locate the trailer on a level, flat, hard surface. Chock the wheels.

#### **Step 2**

Disconnect RV battery and unplug the shore cord power.

#### **Step 3**

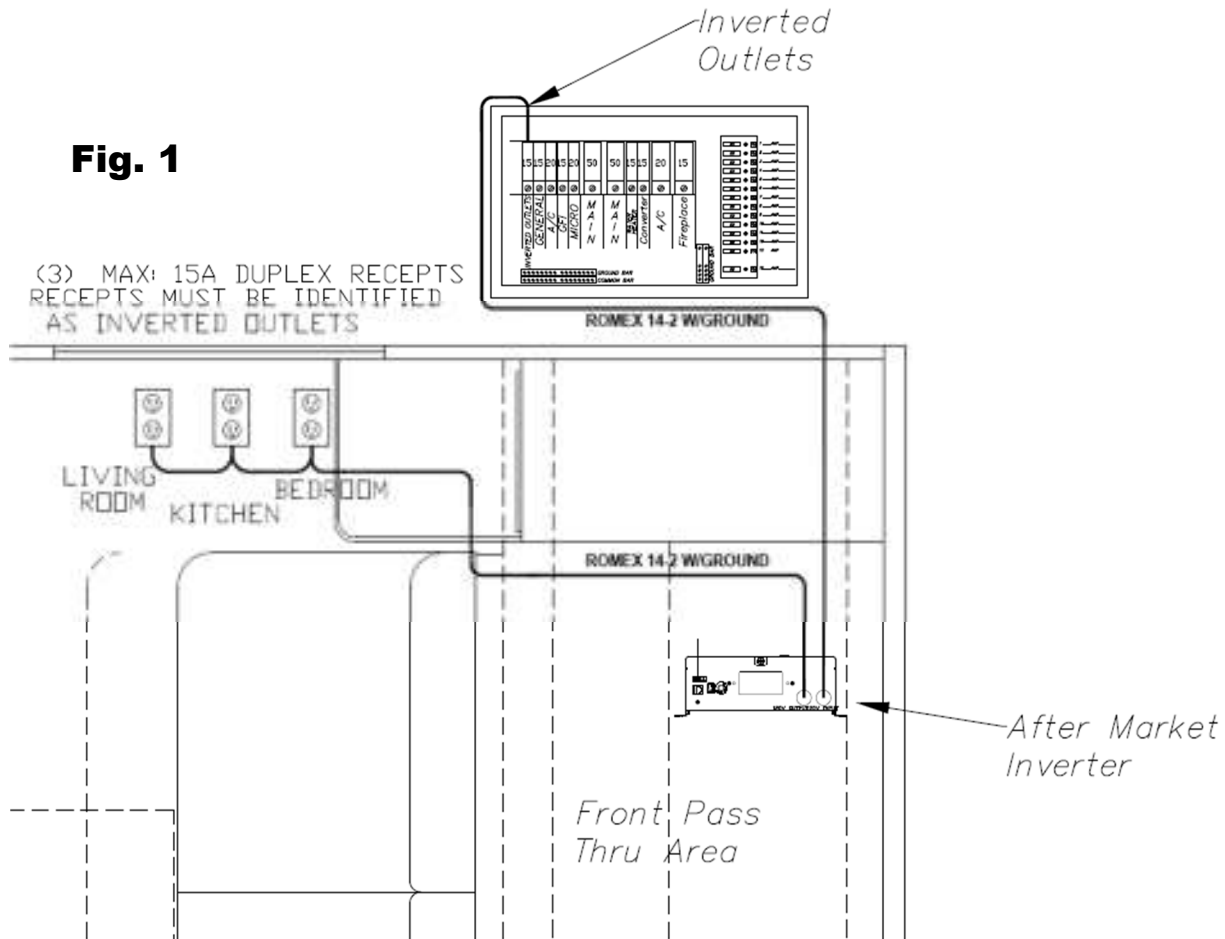
Locate and remove the receptacle in the front bedroom off door side (left side) to expose the wiring. The receptacle will not be used again.

**Step 4**

Install a 1-gang electrical box and determine which wire is coming from the power center and which wire is continuing on to the rest of the circuit. This single gang box will be used as a junction box for the wiring coming from the inverter breaker and the input side of the inverter being installed.

**Step 5**

Install a 14-2 Romex wire to the power center wire and run it through the front pass through compartment to the input side of the inverter. Also install a 14-2 Romex wire from the output side of the inverter back to a new 15 amp receptacle in the previously installed 1-gang electrical box to complete the circuit. See Figure 1.

**Step 6**

Install the new 15 amp receptacle into the 1-gang box, install a cover plate, and proceed to reimbursement.

**WARRANTY REIMBURSEMENT**

This KSB is for installing an aftermarket inverter only. If this is a warranty repair, the flat rate code is **7301242A**

Submit a pre-authorization and claim on Key Express, **Flat Rate Code # 7301242A** with **KSB # 200715** noted in the customer complaint section. The time authorized for this repair is **1.0 hour**.

No part return required.

If you have questions, please contact Customer Service: **(866) 273-1456**