



NUMBER: 08-071-20

GROUP: 08 - Electrical

DATE: July 30, 2020

This bulletin is supplied as technical information only and is not an authorization for repair. No part of this publication may be reproduced, stored in a retrieval system, or transmitted, in any form or by any means, electronic, mechanical, photocopying, or otherwise, without written permission of FCA US LLC.

SUBJECT:

Interior Water Intrusion Through HVAC Air Inlet

OVERVIEW:

This bulletin involves installing new stud clips on the headlamp wiring harness, inspecting and possibly replacing, the cowl panel cover, instrument panel insulator and front carpets for water intrusion.

MODELS:

2017 - 2018	(MP)	Jeep Compass
2017 - 2018	(M1)	Jeep Compass
2017 - 2018	(M4)	Jeep Compass
2018	(M6)	Jeep Compass

NOTE: This bulletin applies to vehicles within the following markets/countries: North America, APAC, LATAM and EMEA.

NOTE: This bulletin applies to vehicles equipped with Air Conditioning (Sales Code HAA) or Air Cond ATC W/Dual Zone Control (Sales Code HAF).

SYMPTOM/CONDITION:

The customer may describe one or more of the following:

- The front passenger floor carpets or mats are wet.
- An unpleasant cabin odor.
- Water leakage from behind the instrument panel.

DIAGNOSIS:

If the customer describes the symptom/condition listed above, perform the Diagnostic Procedure.

1. Remove the front passenger floor mat and inspect the floor carpet and mat for dampness or odor.

CAUTION! Ensure water leak is not coming from the passenger side A-pillar area. If a leak is found at the A-pillar area, this Service Bulletin does not apply. Further diagnosis is needed. Failure to diagnosis the water leak correctly may result in the vehicle returning for another water leak.

2. Perform the water leak test ensuring the windshield cowl panel is subject to water. Refer to the detailed service procedures available in DealerCONNECT/Service Library under: Service Info>23 - Body/Diagnosis and Testing.
3. Was the source of the water leak coming from the windshield cowl panel area?
 - YES>>> Proceed to [Step 4](#).
 - NO>>> Service Bulletin does not apply, further diagnosis should be performed.

NOTE: A mirror may be needed to inspect portions of the instrument panel insulator.

4. Inspect the instrument panel insulator ([Fig. 1](#)) for dampness or water intrusion by performing the following steps:
 - Remove the glove box. Refer to the detailed service procedures available in DealerCONNECT/Service Library under: Service Info>23 - Body/Instrument Panel/Glove box, Instrument Panel/Removal.
 - Remove the floor console. Refer to the detailed service procedures available in DealerCONNECT/Service Library under: Service Info>23 - Body/Interior/Console, Floor/Removal.

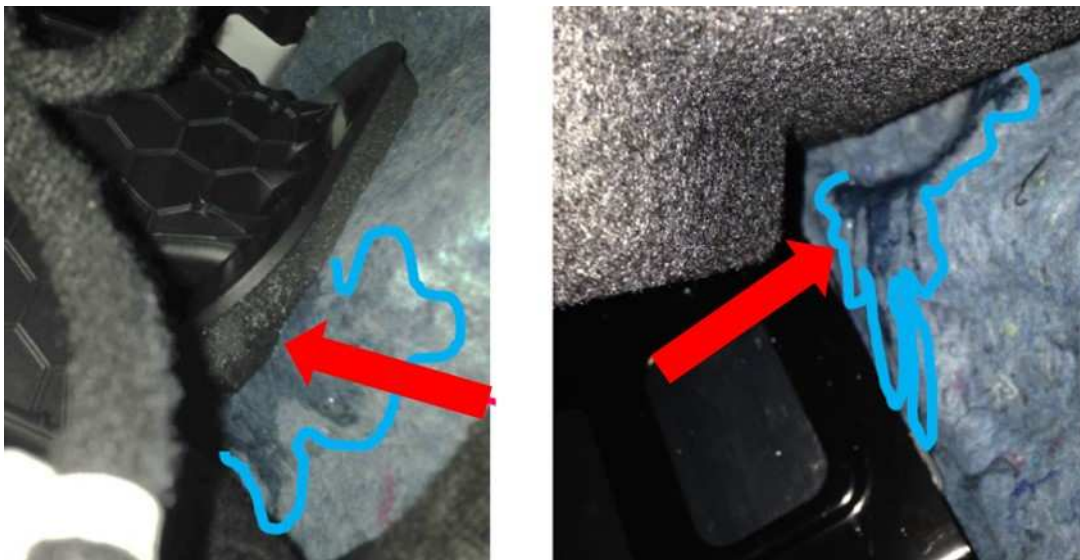


Fig. 1

Examples Areas Of A Wet Instrument Panel Insulator

5. Was the instrument panel insulator, or any of the carpets or mats damp or have an odor ([Fig. 1](#)) ?
 - YES>>> Dry the interior carpet and instrument panel insulator. Proceed to [Step 1](#) of the Drying Procedure.
 - NO>>> Proceed to [Step 1](#) of the Water Leak Repair Procedure.

PARTS REQUIRED:

Qty.	Part No.	Description
2	68422816AA	Clip, Stud (zip ties)
1 (AR)	5UT09RXFAC	Panel, Cowl (Only replace if old design is found on vehicle)
1 (AR)	68073610AA	Switch, Stop Lamp
1 (AR)	68095301AA	Clip, Master Cylinder Push Rod Pin (Brake Booster Push Rod Retainer)
1 (AR)	06512161AA	Screw (Intermediate Shaft)
2 (AR)	68318660AA	Screw, Hex Head (Door Hinge Pivot Bolts)
2 (AR)	06512515AA	Screw, Hex Head (Door Hinge Pivot Bolts)
1 (AR)	68368875AA	O-Ring, A/C Line
1 (AR)	68368912AA	O-Ring, A/C Line
1 (AR)	68255574AA	Drain, A/C and Heater
1 (AR)	68244653AB	Dash Panel Inner Insulator MTX (All FWD/4x2) - (Sales Codes EAQ, EDD, ED6 and ED1)
1 (AR)	68244657AB	Dash Panel Inner Insulator (All FWD/4x2) - (Sales Codes EJJ with DE1)
1 (AR)	68249177AB	Dash Panel Inner Insulator (All AWD/4x4) - (Sales Codes EAQ, EDD, ED6 with DE1)
1 (AR)	68249178AB	Dash Panel Inner Insulator LHD (All AWD/4x4) - (Sales Codes EJJ, EBS with DE1)
1 (AR)	68285883AB	Dash Panel Inner Insulator LHD (All FWD/4x2) - (Sales Codes EAQ, EDD, ED6 with DF5)
1 (AR)	68285884AB	Dash Panel Inner Insulator LHD (All FWD/4x4) - (Sales Codes EAQ, EDD, ED6 with DFH)
1 (AR)	68285886AB	Dash Panel Inner Insulator LHD (All AWD/4x4) - (Sales Codes EBS, DFH with DF5)
1 (AR)	5SZ11DX9AA	FRT Left Carpet - LHD Gas - (Sales Codes EAQ, EDD and ED6)
1 (AR)	6SR43DX9AA	FRT Left Carpet - LHD Gas Without Heel Pad - (Sales Codes EAQ, EDD and EJ6)
1 (AR)	5SZ17DX9AA	FRT Left Carpet - LHD Diesel - (Sales Codes EJJ and EBS)
1 (AR)	6SR44DX9AA	FRT Left Carpet - LHD Diesel Without Heel Pad - (Sales Codes EJJ and EBS)
1 (AR)	5SZ10DX9AA	FRT Right Carpet - LHD Gas - (Sales Codes EAQ, EDD and EJ6)
1 (AR)	5SZ16DX9AA	FRT Right Carpet - LHD Diesel - (Sales Codes EJJ and EBS)

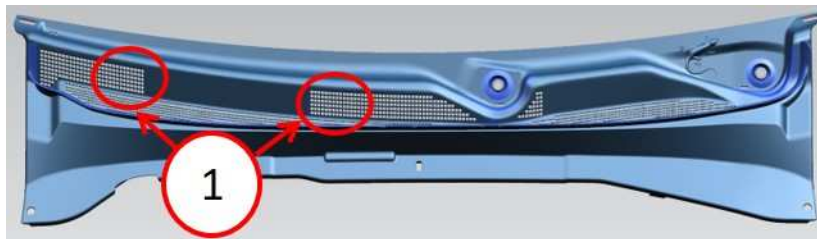
NOTE: Wet or damp front floor mats must be dried. Do not replace any floor mats.

DRYING PROCEDURE:

1. Remove the front passenger seat. Refer to the detailed service procedures available in DealerCONNECT/Service Library under: Service Info>23 - Body/Seats, First Row/Seat, Front/Removal.
2. Lift and support the interior carpet so that air flow can get under the carpet.
3. Using a portable shop fan or ozone machine, dry the interior carpet and instrument panel insulator.
4. Did the carpet and instrument panel insulator dry with no odor?
 - YES>>> Proceed to [Step 1](#) of the Water Leak Repair Procedure.
 - NO>>> Replace the instrument panel insulator and front carpet. Proceed to [Step 1](#) of the Instrument Panel Insulator Repair Procedure.

WATER LEAK REPAIR PROCEDURE:

1. Visually inspect the cowl panel cover ([Fig. 2](#)) . The revised cowl panel cover screen openings are noticeably smaller screened opening area ([Fig. 2](#)) .

**Fig. 2**

Original Design Cowl Panel Cover (Replace If The Vehicle Has This Design Cowl Panel)

1 - Revised Cowl Panel Cover Does Not Have As Large Screened Openings

NOTE: Only replace the cowl panel cover if it is the original design cowl panel cover.

2. Does the cowl panel cover have the revised design ([Fig. 2](#)) ?
 - YES>>> **Remove the cowl panel cover.** Refer to the detailed service procedures available in DealerCONNECT/Service Library under: Service Info>23 - Body/Exterior/Cover, Cowl Panel/Removal. Proceed to [Step 3](#) of the Repair Procedure.
 - NO>>> **Remove and discard the cowl panel cover.** Refer to the detailed service procedures available in DealerCONNECT/Service Library under: Service Info>23 - Body/Exterior/Cover, Cowl Panel/Removal. Proceed to [Step 3](#) of the Repair Procedure.

3. Locate the headlamp wiring harness. Remove and discard the two stud clips that fasten the harness to the plenum (Fig. 3) .



Fig. 3
Old Design Stud Clips

1 - Two Old Plenum Stud Clips To Remove And Discard

CAUTION! Both stud clips must be replaced. Failure to replace the clips may result in water intrusion through the HVAC air inlet.

4. Install two new stud clips onto the plenum studs and fasten the headlamp wiring harness (Fig. 4) .

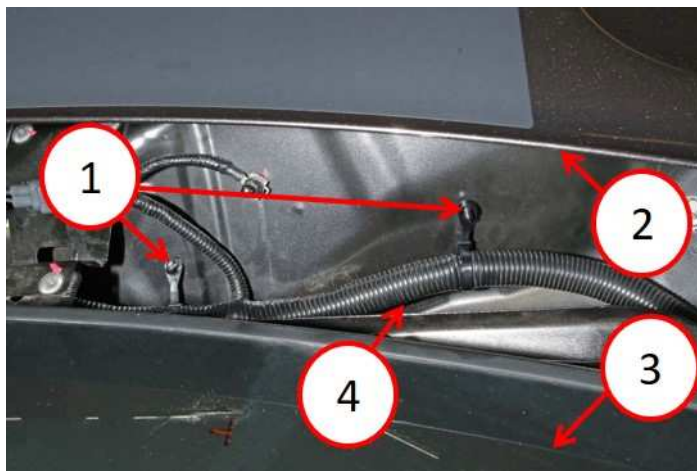


Fig. 4
New Stud Clips Installed on Headlamp Wiring Harness and Plenum Studs

- 1 - New Stud Clips on Plenum Studs
 - 2 - Vehicle Hood
 - 3 - Vehicle Windshield
 - 4 - New Headlamp Wiring Harness Routing (**Re-routing is accomplished when the new clips have been installed**)
-

5. Install the cowl panel cover (**Replace if original design is on vehicle**). Refer to the detailed service procedures available in DealerCONNECT/Service Library under: Service Info>23 - Body/Exterior/Cover, Cowl Panel/Installation. If referred to this step from [Step 38](#), this bulletin has been completed.

INSTRUMENT PANEL INSULATOR REPAIR PROCEDURE:

NOTE: There will be some service procedure steps that are not required such as removal of the steering wheel from the steering column for this Repair Procedure.

1. Remove the HVAC housing. Refer to the detailed service procedures available in DealerCONNECT/Service Library under: Service Info> 24 - Heating and Air Conditioning/ Distribution/Housing, HVAC/Removal.
2. Remove the brake and accelerator pedal assemblies. Refer to the detailed service procedures available in DealerCONNECT/Service Library under: Service Info>05 - Brakes/05 - Brakes, Base/Hydraulic/Mechanical/Pedal(s), Brake and/or Accelerator/Removal.
3. Disconnect the Transmission Control Module (TCM) wiring harness from the module (Fig. 5) .

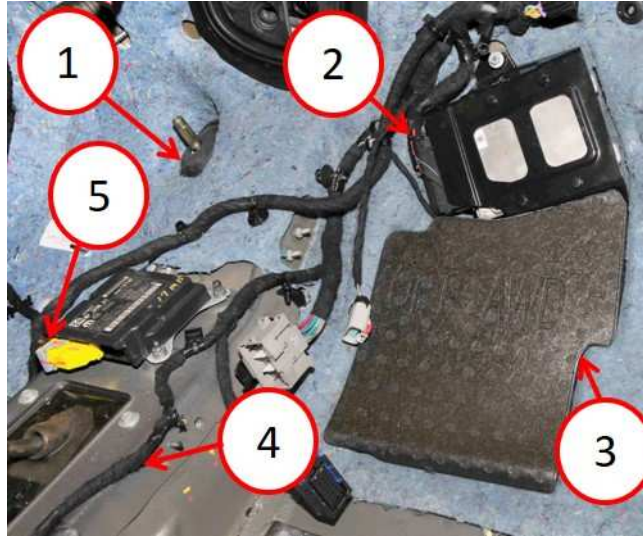


Fig. 5

Wiring Harnesses And Steering Shaft Boot

- 1 - Steering Gear Pinion Shaft Boot
- 2 - TCM Wiring Harness
- 3 - DTCM Module (If Equipped)
- 4 - Shifter Wiring Harness
- 5 - ORC Wiring Harness

4. Remove the TCM module from the vehicle. Refer to the detailed service procedures available in DealerCONNECT/Service Library under: Service Info>08 - Electrical/8E - Electronic Control Modules/Module, Transmission Control (TCM)/Removal.
5. Disconnect the Drivetrain Control Module (DTCM) wiring harness from the module (If equipped) (Fig. 5) . If not equipped, proceed to Step 7 of the Repair Procedure.
6. Remove the DTCM module from the vehicle.
7. Disconnect the headlamp/dash wiring harness (Fig. 5) with fasteners from the vehicle.
8. Disconnect the shifter wiring harness with fasteners from the vehicle.
9. Disconnect the interior wiring harness (Fig. 5) with fasteners from the vehicle.
10. Disconnect the Occupant Restraint Controller (ORC) wiring harness (Fig. 5) from the module.
11. Disconnect the ORC wiring harness fasteners from the vehicle.
12. Remove the steering gear pinion shaft boot (Fig. 5) from the vehicle.

13. Remove the hood release cable from the hood release bracket (Fig. 6) .



Fig. 6
Hood Release Assembly

14. Remove the two interior wiring harness cover nuts (Fig. 7) from the studs.

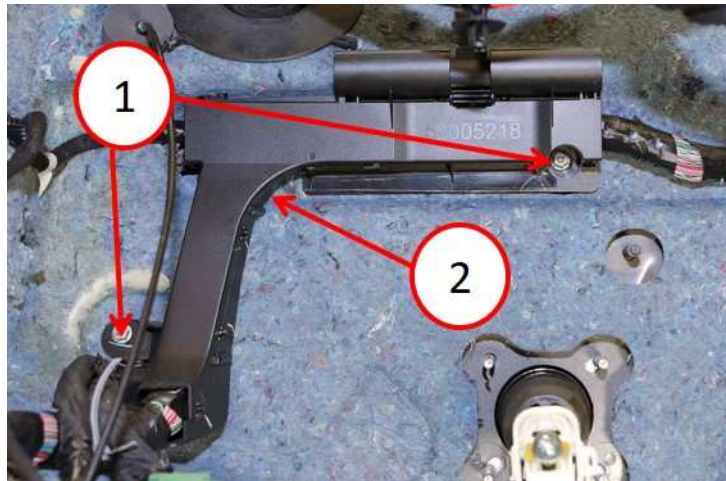


Fig. 7
Wiring Harness Cover Nuts

- 1 - Cover Nuts
2 - Wiring Harness Cover
-

15. Disconnect the interior wiring harness from its fasteners and carefully pull reward (Fig. 8) .



Fig. 8
Wiring Harness

16. Remove the seven fasteners (Fig. 9) holding the insulator to the vehicle .

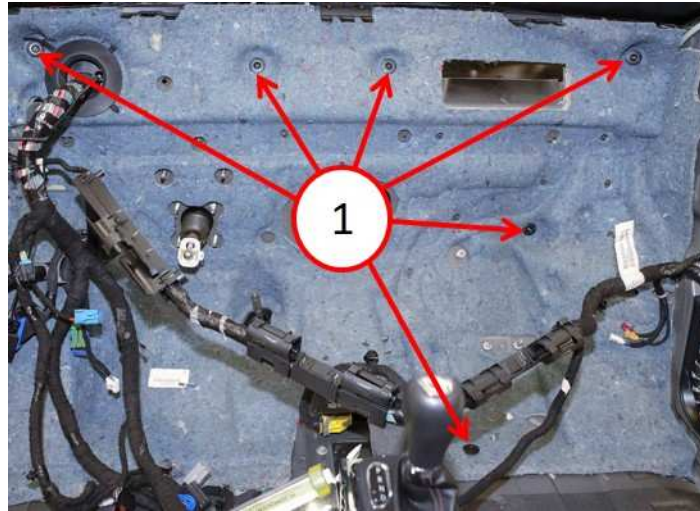


Fig. 9

Instrument Panel Insulator And Fasteners

1 - Insulator Fasteners (One Hidden)

17. Remove and discard the old instrument panel insulator from the vehicle.

CAUTION! The new instrument panel insulator must be installed on the vehicle without cutting or modifying it in any way.

18. Install the new instrument panel insulator on the vehicle.
19. Install the seven fasteners (Fig. 9) to the insulator on the vehicle.
20. Install the hood release cable on the hood release bracket.
21. Install the steering gear pinion shaft boot on the vehicle.
22. Connect the ORC wiring harness with fasteners on the vehicle.
23. Connect the ORC wiring harness to the module.
24. Connect the interior wiring harness with fasteners on the vehicle.
25. Install the two interior wiring harness cover nuts and tighten securely.
26. Connect the shifter harness with fasteners on the vehicle.
27. Connect the headlamp/dash harness with fasteners on the vehicle.
28. Install the Drivetrain Control Module (DTCM) (**If equipped**). If not equipped, proceed to [Step 30](#) of the Repair Procedure.
29. Connect the DTCM wiring harness to the module.
30. Install the TCM module on the vehicle. Refer to the detailed service procedures available in DealerCONNECT/Service Library under: Service Info>08 - Electrical/8E - Electronic Control Modules/Module, Transmission Control (TCM)/Installation.
31. Connect the TCM wiring harness to the module.

CAUTION! Install new a new brake lamp switch and brake booster push rod retainer. Failure to do so may result in brake pedal performance issues.

32. Install the brake and accelerator pedal assemblies. Refer to the detailed service procedures available in DealerCONNECT/Service Library under: Service Info>05 - Brakes/05 - Brakes, Base/Hydraulic/Mechanical/Pedal(s), Brake and/or Accelerator/Installation.
33. Install the HVAC housing. Refer to the detailed service procedures available in DealerCONNECT/Service Library under: Service Info> 24 - Heating and Air Conditioning/ Distribution/Housing, HVAC/Installation.
34. **Install the new front passenger carpet.** Refer to the detailed service procedures available in DealerCONNECT/Service Library under: Service Info> 23 - Body/Interior/Carpet, Floor/Removal and Installation.
35. Install the glove box. Refer to the detailed service procedures available in DealerCONNECT/Service Library under: Service Info>23 - Body/Instrument Panel/Glove box, Instrument Panel/ Installation.
36. Install the console. Refer to the detailed service procedures available in DealerCONNECT/Service Library under: Service Info>23 - Body/Interior/Console, Floor/Installation.
37. Install the front passenger seat (**If removed**). Refer to the detailed service procedures available in DealerCONNECT/Service Library under: Service Info>23 - Body/Seats, First Row/Seat, Front/Installation.
38. Proceed to [Step 1](#) of the Water Leak Repair Procedure.

POLICY:

Reimbursable within the provisions of the warranty.

TIME ALLOWANCE:

Labor Operation No:	Description	Skill Category	Amount
08-94-WD-90	Replace Wire Harness Retainer Clips to Cowl - Includes Cowl Screen as Required (2 -Skilled)	6 - Electrical and Body Systems	0.3 Hrs.
08-94-WD-91	Replace Wire Harness Retainer Clips to Cowl, IP Insulator and Front Carpet - Includes Cowl Screen as Required (2 - Skilled)	6 - Electrical and Body Systems	6.8 Hrs.
23-02-08-50	Perform Water Testing and Complete Drying Procedure (2 - Skilled)	6 - Electrical and Body Systems	A/T

FAILURE CODE:

ZZ	Service Action
----	----------------