

2021 NX 300, NX 300h Pre-Delivery Service (PDS)

Service Category General

Section Pre-Delivery Service

Market USA

Toyota Supports
ASE Certification 

Applicability

YEAR(S)	MODEL(S)	ADDITIONAL INFORMATION
2021	NX300, NX300H	

Introduction

This bulletin contains the vehicle specific pre-delivery services for 2021 model year NX 300, NX 300h vehicles. Additionally, refer to the applicable Pre-Delivery Service (PDS) Check Sheet for services to be performed.

Warranty Information

OP CODE	DESCRIPTION	TIME	OFF	T1	T2
N/A	Not Applicable to Warranty	–	–	–	–

Procedures

- [D/C Cut Fuse Installation](#) 2
- [Deletion of Vehicle Alert History](#) 3
- [Tire Pressure Warning System \(TPWS\) Initialization](#) 4
- [Memorize Steering Angle Neutral Point](#) 4
- [Front Emergency Towing Eyelet Removal*](#) 5
- [Front Emergency Towing Eyelet Hole Cover Installation*](#) 6
- [Front License Plate and Mounting Bracket Installation*](#) 7
- [Installation of Rubber Body Plugs*](#) 9

*If applicable.

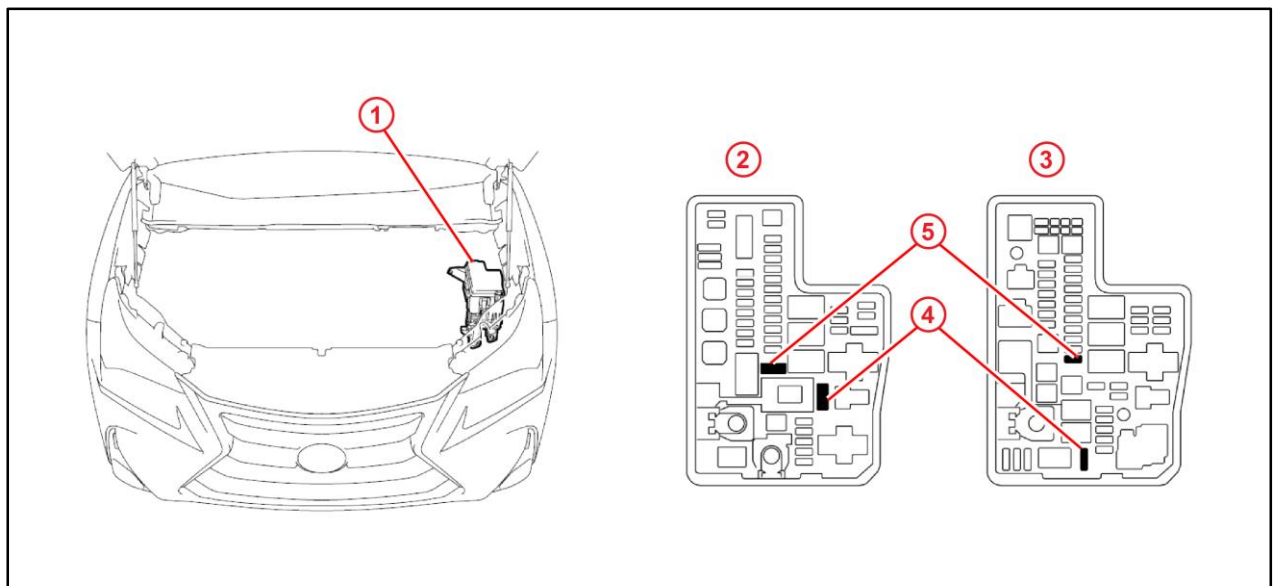
2021 NX 300, NX 300h Pre-Delivery Service (PDS)

D/C Cut Fuse Installation

To minimize battery discharge during transportation and storage, the D/C cut fuse (20A) has been removed at the assembly plant and temporarily stored in the blank space of the relay block in the engine compartment. During PDS, reinstall the D/C cut fuse (20A) into its original location and clear ALL related Diagnostic Trouble Codes (DTCs).

Remove the D/C cut fuse (20A) from the blank space of the relay block in the engine compartment and install it in the location shown.

Figure 1.



1	Relay Block
2	For Hybrid Vehicles
3	For Gasoline Vehicles

4	Remove This D/C Cut Fuse (20A)
5	Install D/C Cut Fuse (20A) Here (Original Location)

NOTE

While the vehicle is stored at the dealership, disconnect the negative (-) battery terminal to prevent battery discharge. Refer to Service Bulletin [L-SB-0017-20](#), *Battery Maintenance During PDS*, for battery maintenance information.

2021 NX 300, NX 300h Pre-Delivery Service (PDS)

Deletion of Vehicle Alert History

As the D/C cut fuse is removed, the communication between the various ECUs is interrupted. When the D/C cut fuse is reinstalled, the communication status is restored, but Lexus Enform Service Connect may store malfunction history in the form of vehicle alert history.

Therefore, it is necessary to operate the multi-display and delete the vehicle alert history AFTER installing the D/C cut fuse during PDS at the dealership.

Deletion procedure

1. Turn the engine switch (power switch) to the "ON" position ("ON" mode).
2. Push the Menu switch on the remote touch device.
3. On the multi-display, enter the following menus: *Info – Vehicle Alert History*.
4. If there is vehicle alert history, perform the Delete History operation.

HINT

If there is no vehicle alert history stored, the system will display a message stating that "There is no vehicle alert history."

5. When the vehicle alert history deletion confirmation screen is displayed, select Yes.

HINT

When deletion of the vehicle alert history is complete, the system will display a message stating that "There is no vehicle alert history."

6. Turn the engine switch (power switch) to the "OFF" position ("OFF" mode).

2021 NX 300, NX 300h Pre-Delivery Service (PDS)

Tire Pressure Warning System (TPWS) Initialization

Refer to the applicable Repair Manual for the TPWS initialization procedure ([NX 300](#) / [NX 300h](#)). Note the spare tire does NOT have a TPWS sensor.

NOTE

To adjust the tire pressure correctly when the outside temperature is significantly colder than the shop temperature, perform a Health Check using Techstream and select the compensation tire pressure checkbox. Compensation pressures will display on the Health Check results screen. Adjust the tire pressure when the tires are cold.

Memorize Steering Angle Neutral Point

As a result of the removal of the D/C cut fuse, the power source to the steering angle sensor is cut off. When the D/C cut fuse is reinstalled, the parking assist monitor system/panoramic view monitor system will be operative, but it cannot display guidelines to assist parking operation because the center position recognized by the steering angle sensor may not be in an initial position. Therefore, perform steering angle neutral point initialization AFTER installing the D/C cut fuse during PDS.

Refer to the applicable Repair Manual for the steering angle neutral point initialization procedure ([NX 300](#) / [NX 300h](#)).

2021 NX 300, NX 300h Pre-Delivery Service (PDS)

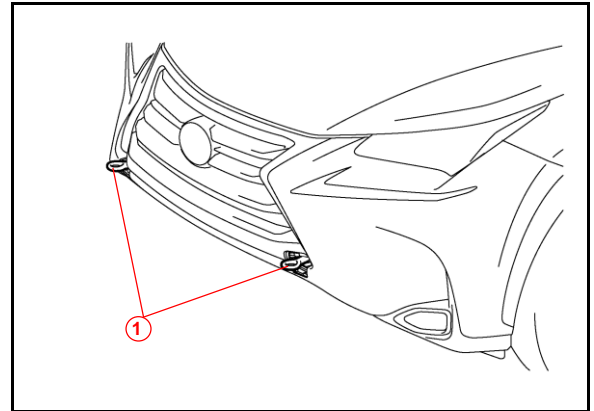
Front Emergency Towing Eyelet Removal

1. Remove the two front emergency towing eyelets from the front bumper extension by turning them counterclockwise.

HINT

If it is difficult to loosen the front emergency towing eyelet, use a steel bar.

Figure 2.



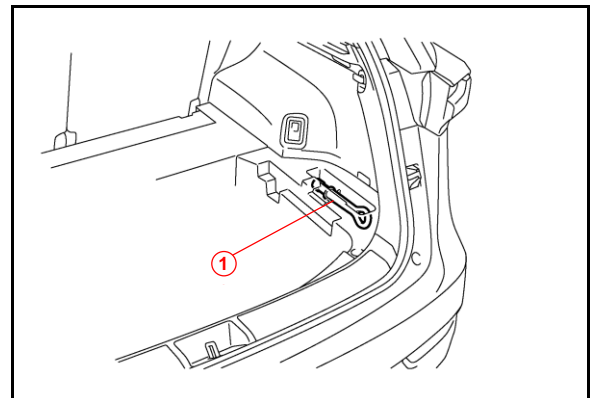
1 Front Emergency Towing Eyelet

2. Place one of the removed front emergency towing eyelets into the storage box in the luggage compartment.

HINT

Dispose of the other removed emergency towing eyelets.

Figure 3.



1 Front Emergency Towing Eyelet

2021 NX 300, NX 300h Pre-Delivery Service (PDS)

Front Emergency Towing Eyelet Hole Cover Installation

1. Install the two front bumper No. 2 front emergency towing eyelet hole covers, which are stored in the glove compartment, onto the front bumper extension.

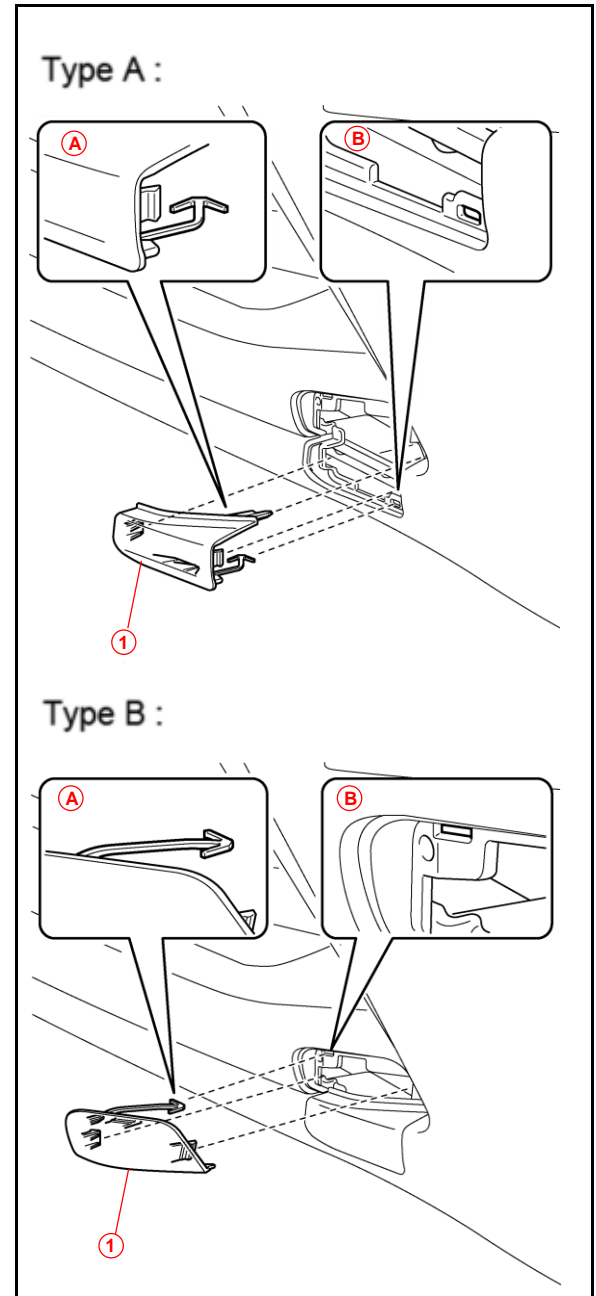
- A. Insert the arrow-shaped part (A) of the front bumper No. 2 front emergency towing eyelet hole cover into the eyelet hole (B) as shown.

- B. Install the front bumper No. 2 front emergency towing eyelet hole cover to the hole of the front bumper extension.

HINT

Make sure the front emergency towing eyelet hole cover is installed in the front, and the rear emergency towing eyelet hole cover is installed in the rear.

Figure 4.



A	Arrow-shaped Part
B	Eyelet Hole
1	Front Emergency Towing Eyelet Hole Cover

2021 NX 300, NX 300h Pre-Delivery Service (PDS)

Front License Plate and Mounting Bracket Installation

The front license plate mounting bracket and two self-tapping screws for the 2021 model year NX 300 and NX 300h are stored in the rear cargo area of the vehicle. Install the license plate and mounting bracket during PDS.

1. Install the mounting bracket.
 - A. Align holes "A" of the mounting bracket with the dimples on the radiator lower grille.

NOTE

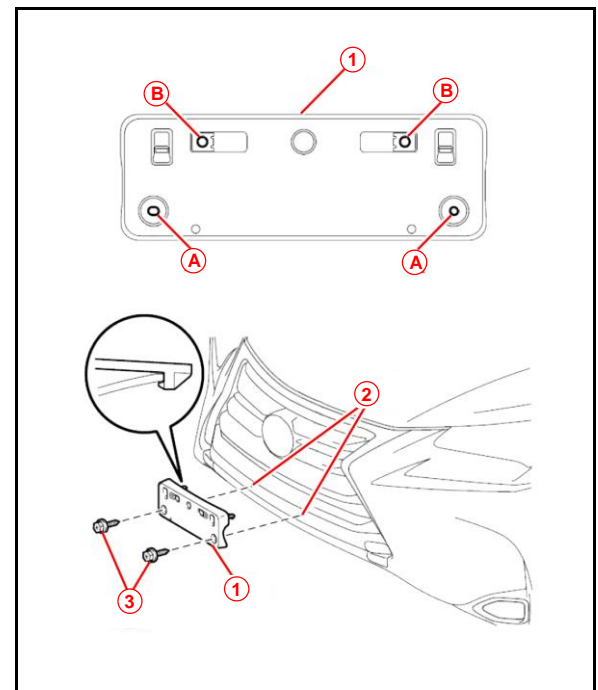
- Holes "A" are used to install the mounting bracket onto the bumper cover.
- Holes "B" are used to install the license plate onto the mounting bracket.

- B. Engage the two clips and screw the two supplied self-tapping screws directly into the dimples to install the front license plate mounting bracket.

NOTICE

- Do NOT pre-drill holes into the dimples on the front bumper cover.
- Do NOT overtighten the self-tapping screws.

Figure 5.



1	Mounting Bracket
2	Dimple
3	Self-tapping Screw

2021 NX 300, NX 300h Pre-Delivery Service (PDS)

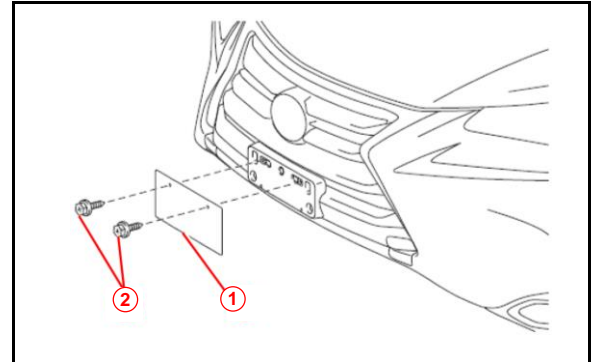
Front License Plate and Mounting Bracket Installation (continued)

2. Install the front license plate onto the mounting bracket using two noncorroding bolts with the following dimensions.

Nominal Length: 15.0 mm (0.59 in.)

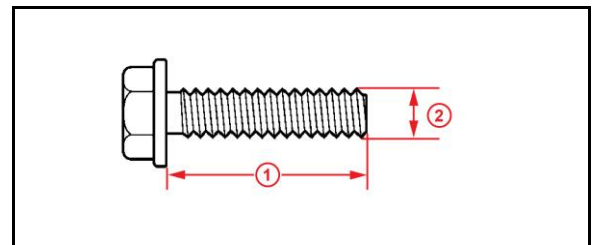
Diameter: 6.0 mm (0.24 in.)

Figure 6.



1	Front License Plate
2	Bolt

Figure 7.



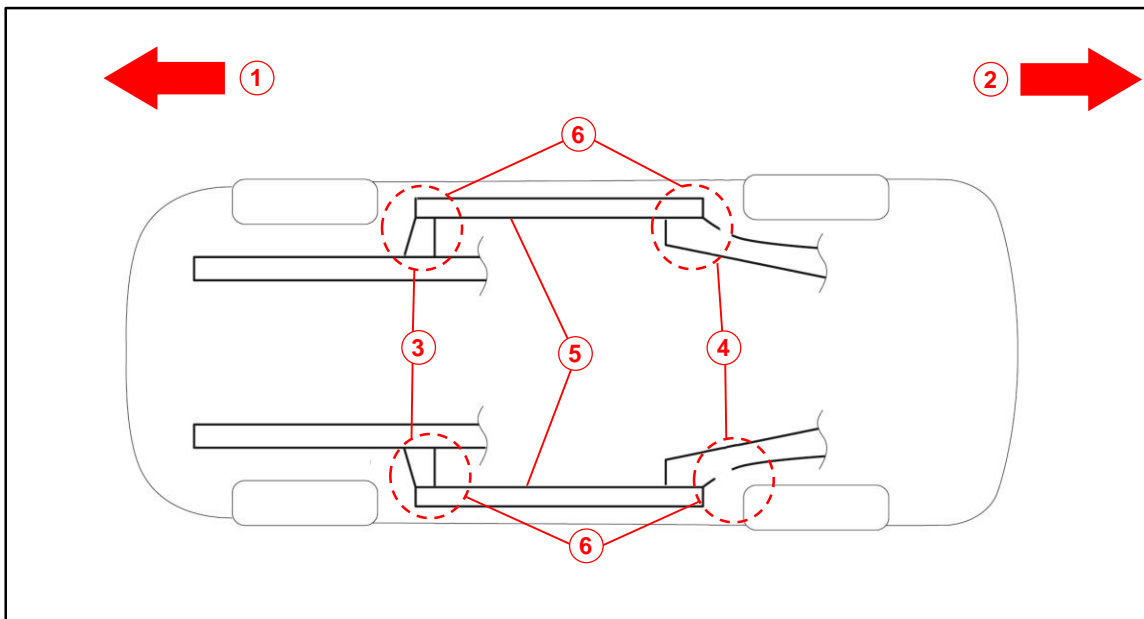
1	Nominal Length
2	Diameter

2021 NX 300, NX 300h Pre-Delivery Service (PDS)

Installation of Rubber Body Plugs

1. Confirm the number of plugs in the glove box. If two plugs are present, perform substep 2A ONLY. If four plugs are present, perform substep 2A AND substep 2B.
2. Install plugs according to the following instructions by confirming the number of plugs in the glove box.
 - A. Install two plugs in the rear side member hole or rocker inner hole.
 - B. Install two plugs in the torque box hole or rocker inner hole.

Figure 8.



1	Front Side
2	Rear Side
3	Torque Box Hole or Rocker Inner Hole
4	Rear Side Member Hole or Rocker Inner Hole
5	Rocker Inner
6	Install Plug Here (if Applicable)