

Technical product information

Topic	New Continental GT and GTC - Rear quarter glass not fully
Market area	United States E05 Bentley USA and rest America (6E05)
Brand	Bentley
Transaction No.	2060079/1
Level	EH
Status	Approval
Release date	

New customer code

Object of complaint	Complaint type	Position
body fixtures and fittings -> window opening/closing, window heating	functionality	
body fixtures and fittings -> window opening/closing, window heating -> electric	functionality -> cannot be closed	
body fixtures and fittings -> window opening/closing, window heating -> window return at door- closing	functionality -> without function / defect	rear left
body fixtures and fittings -> window opening/closing, window heating -> window return at door- closing	functionality -> without function / defect	rear right

Vehicle data

New Continental GT and GTC

Sales types

Type	MY	Brand	Designation	Engine code	Gearbox code	Final drive code
3S3*	2018	E		*	*	*
3S3*	2019	E		*	*	*
3S3*	2020	E		*	*	*
3S4*	2019	E		*	*	*
3S4*	2020	E		*	*	*

Chas is numbers

Manufacturer	Filler	Type	Filler	MY	Factory	From	To	Prod from	Prod to
SCB	*	*	*	*	C	000011	081983		

Documents

Document name
master.xml

Customer statement / workshop findings

During window and/or door close operation, the front door drop glass closes and seals (Point A) however, the rear quarter glass does not fully close and seal (Point B) leaving a gap between the front and rear glass (Point C) – Figure 1.

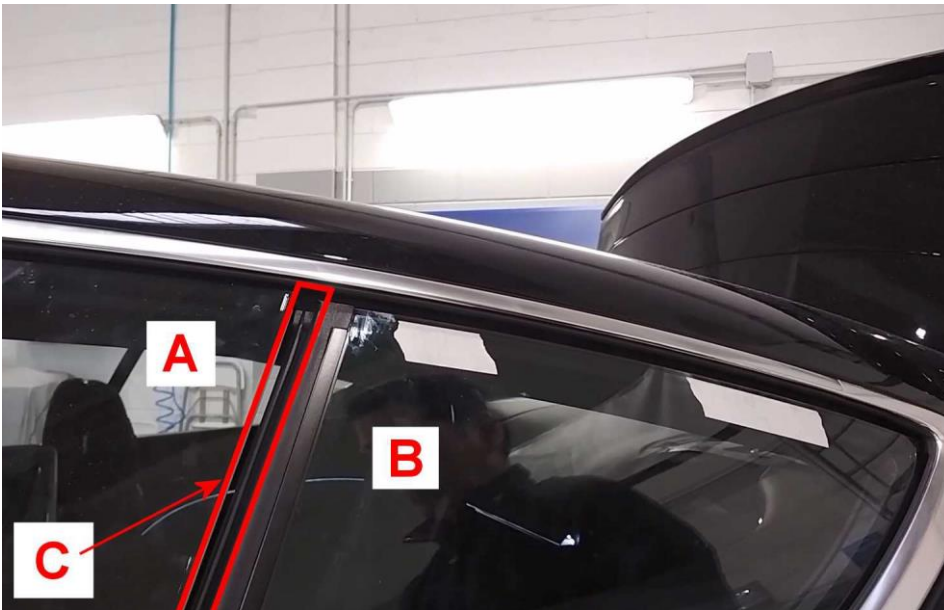


Figure 1.

Technical background

Refer to the Measure section of this TPI

Production change

All vehicles from VIN SCBCG13S5LC081983 have the latest level of software installed at the time of production

Measure

The current vehicle Software, Record Number (Dataset) and Record Version levels must be determined, prior to continuing with this document, as follows:

- Note:- Vehicles manufactured from SCBCG13S5LC081983 have the latest Software, Record Number (Dataset) and Record Version installed.

Software, Record Number and Record Version levels

- From the Bentley approved Diagnostic tester main screen, select Control units and then Control units list – – figure 2.

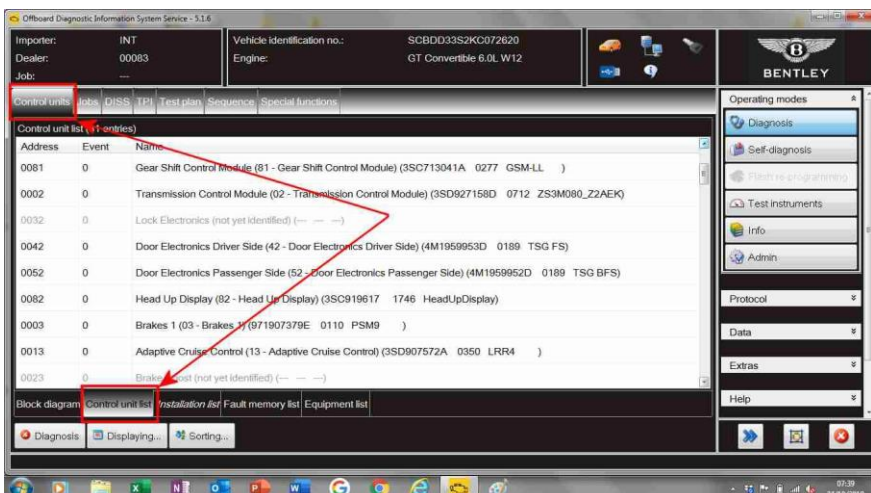


Figure 2

Scroll to 0042 - Door Electronics Drivers Side (42 – Door Electronics Drivers Side) – figure 3.

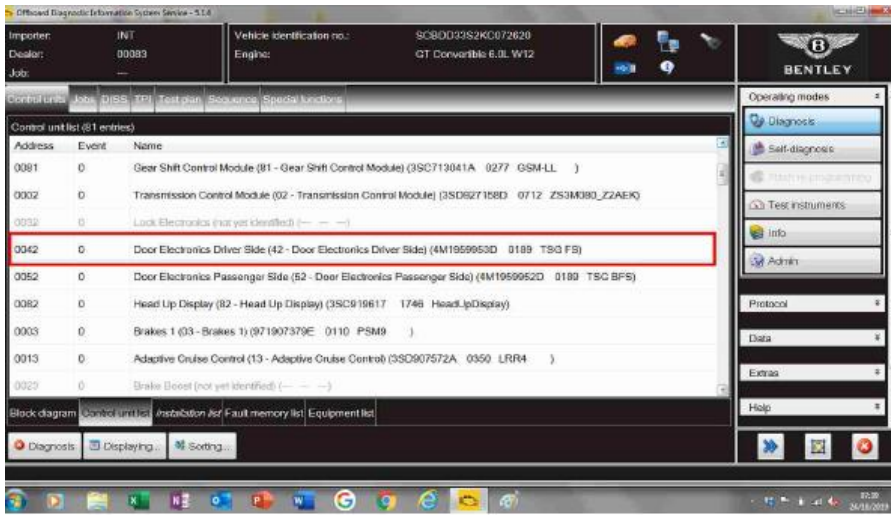


Figure 3.

“Right click” on 0042 - Door Electronics Drivers Side (42 – Door Electronics Drivers Side) and select Guided Functions – Figure 4.

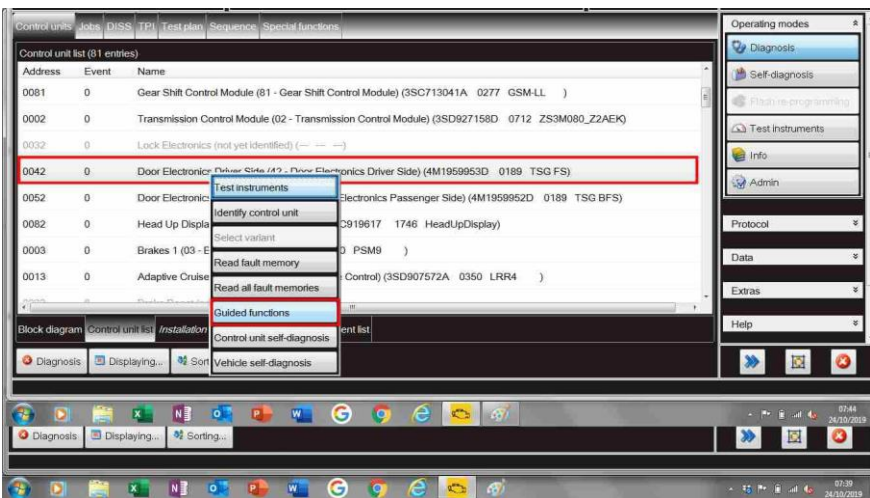


Figure 4.

Select 42 – Read identification data (Rep.Gr.57) then Execute – figure 5.

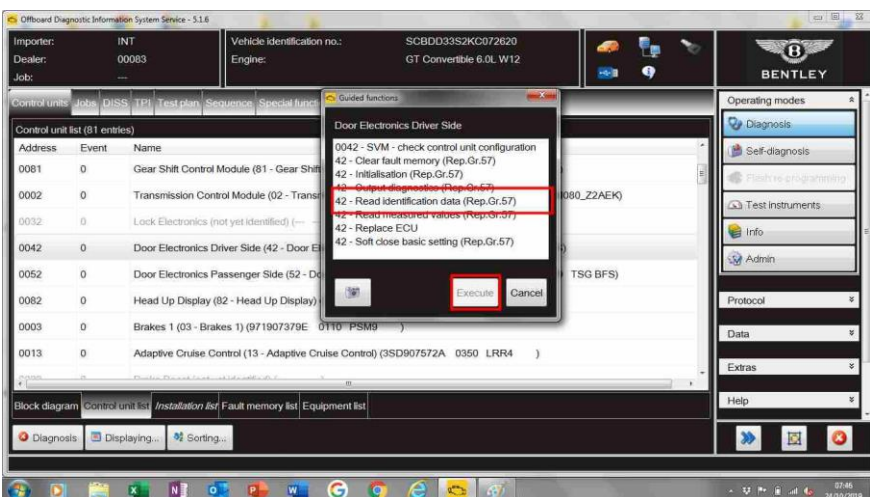


Figure 5.

Make a note of “Software Part Number”, “Software Version”, “Record Number” and “Record Version” – figure 6.

Cross reference the “Software Part Number”, “Software Version”, “Record Number” and “Record Version” with Table 1 below, determine if the Control Unit requires an update. Continue to check the three remaining Control Units – 0052, 00BB and 00BC using the same process.

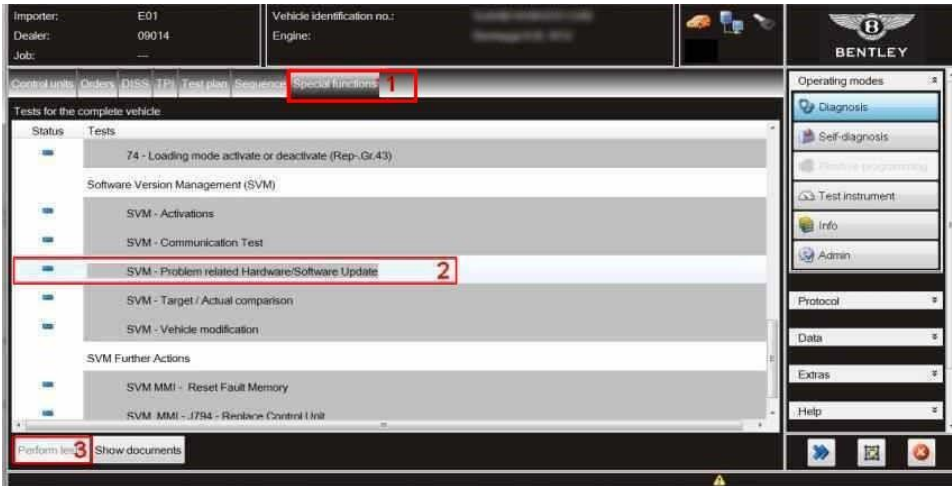


Figure 7.

4) At the SVM screen (1) enter the specific SVM code 370DOORS189 and then select Adopt (2) – Figure 8.

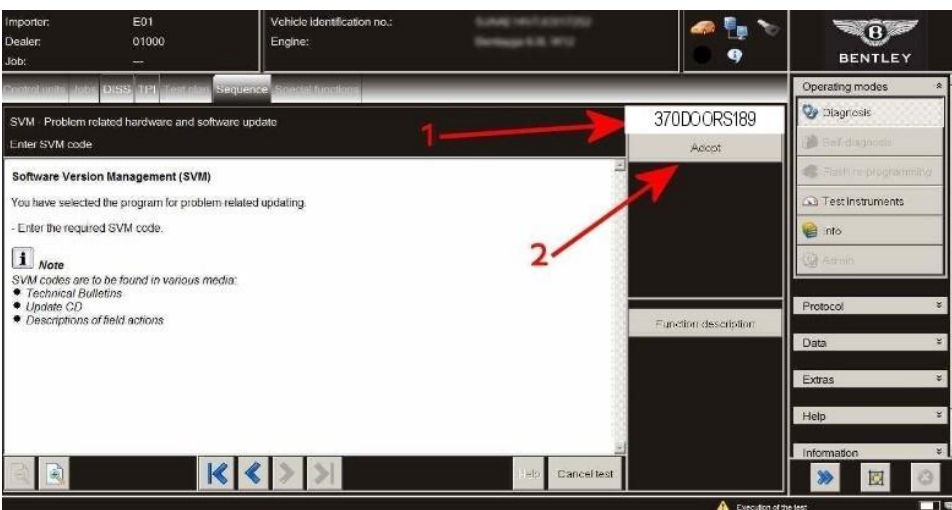


Figure 8.

5) Check you have entered the correct SVM code (1) and select Yes (2) and follow all on screen prompts – Figure 9.

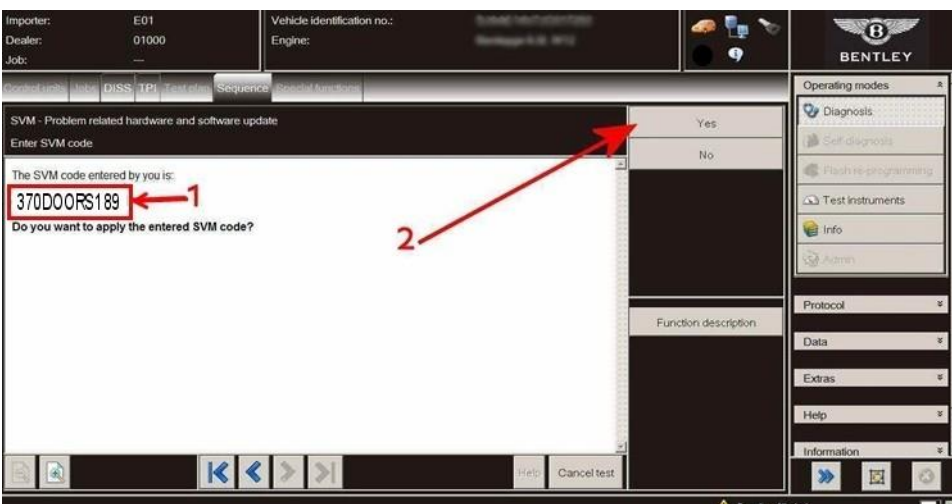


Figure 9.

- When prompted enter your global user ID and password
- Follow all on screen prompts to continue through the procedure, the identification data will be transferred
- Once the software that requires changing is detected select Done/Continue, Follow all on-screen prompts the online connection will deliver the required software to the tester

Follow all on screen prompts until update is complete

6) Clear all DTC's and ensure all applicable test plans are followed including Basic settings and initialization routines

Warranty accounting instructions

Software update

Warranty type	110 or 910
Damage service number	64 38
Damage code	00 40
Labour operation code	01 51 00 00
Time	Time taken from ODIS log – Maximum 50 TU