



# HYUNDAI Technical Service Bulletin

GROUP

Body

NUMBER

20-BD-014H

DATE

July, 2020

MODEL(S)

ALL

**SUBJECT:** INFORMATION FOR LAMP CONDENSATION

This TSB supersedes 19-BD-003H-1 by adding service information for diagnosing and removing condensation and including other lamp assemblies.

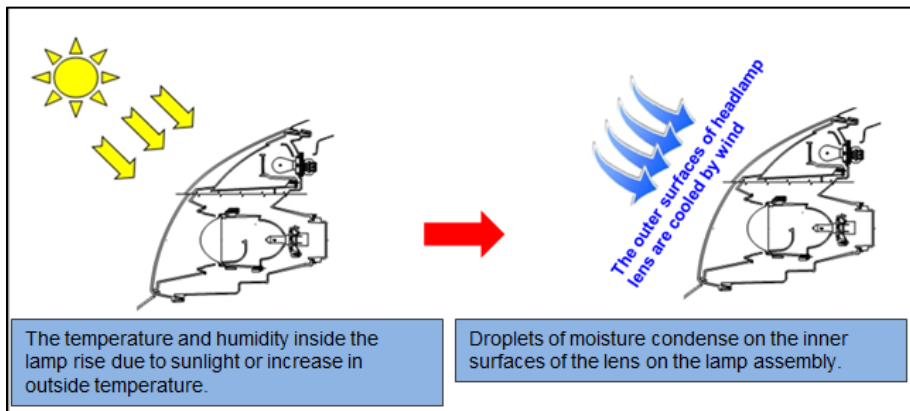
**Description:** This bulletin provides information regarding condensation related to moisture accumulation in the headlamp, rear combination lamp, daytime running lamp (DRL), or fog lamp. The TSB illustrates the various causes of condensation inside the lamp assembly.

Lamp assembly replacement is NOT necessary in most cases. This condition can be eliminated by turning on the lamps with the engine running for several minutes, or during normal driving operation.

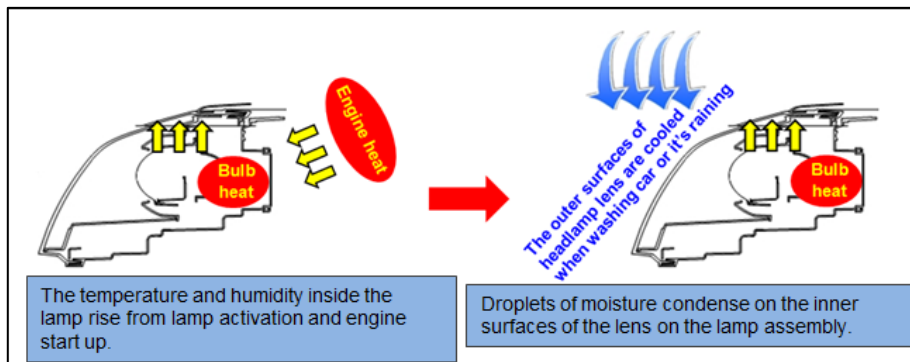
**Applicable Vehicles:** All

**General Information:** Various causes of lamp condensation.

## 1) Natural Condensation



## 2) Condensation from Engine Startup



## A. Lamp Condensation Identification

### **NOTICE**

Condensation from moisture accumulation is a normal occurrence. Lamp assembly replacement is **NOT** necessary to resolve this issue.

#### 1) **Normal Condensation**

Condensation occurring inside the lamp assembly during or after a car wash cycle is considered a natural occurrence. This condition occurs when water vapor inside the lamp assembly is exposed to temperature variations.

This condensation is **NORMAL** and replacement is **NOT REQUIRED**.

See page 4 of the service procedure for removing normal condensation.



*Normal condensation in the headlamp*

#### 2) **Water Leak**

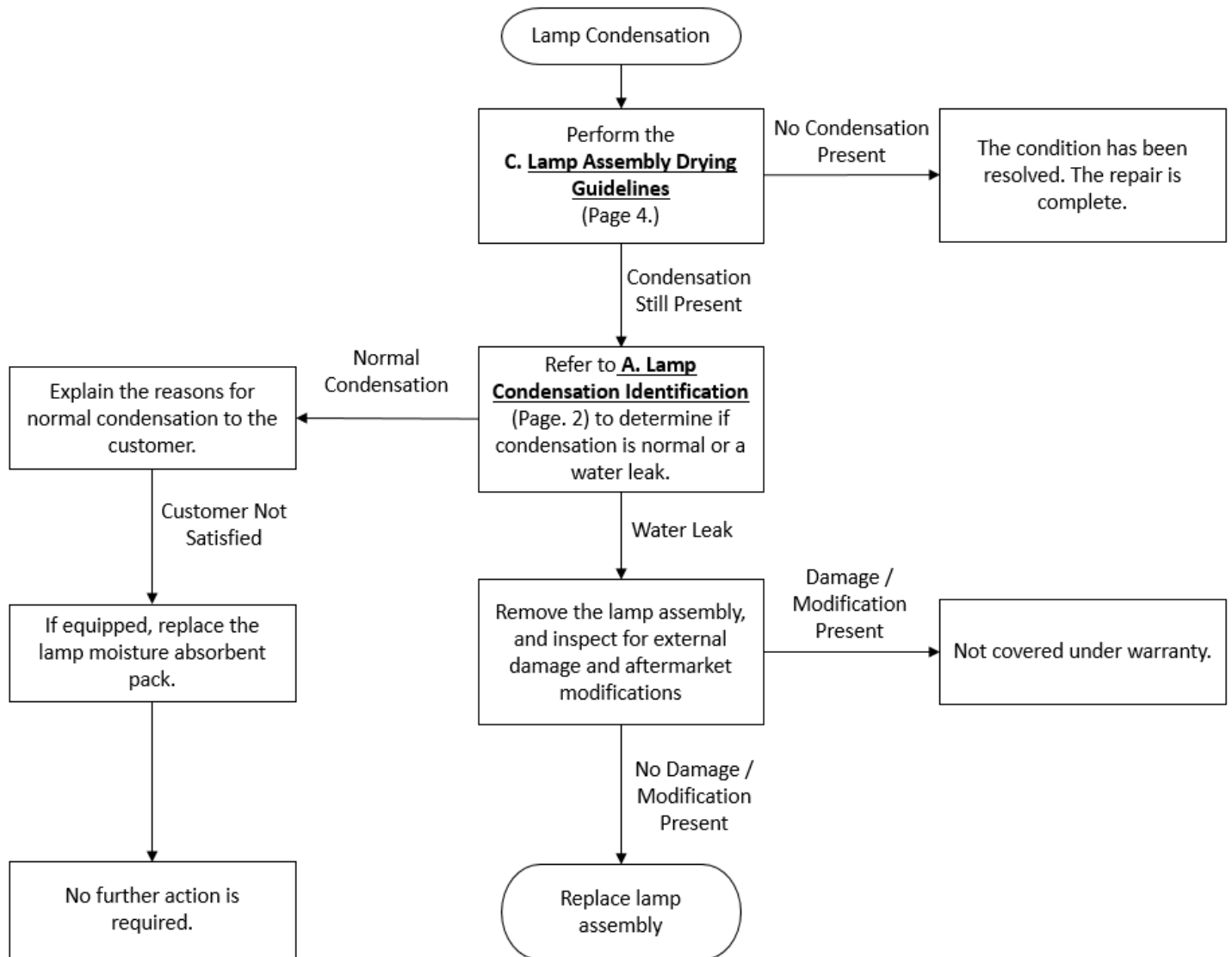
If water is collecting at the bottom of the lamp assembly, or the condensation remains after the lamps have been on for 30 minutes or more, there may be a water leak in the assembly. The leak may be caused by a poor seal between the lamp housing and lens, cracks in the lamp assembly, or poor fitment.

The condition should be diagnosed and repaired as necessary.



*Water collecting inside the headlamp*

**B. Moisture / Condensation Repair Flowchart**



### C. Lamp Assembly Drying Guidelines

- Ensure that the vehicle is parked in a well ventilated area and that the dust cap(s) have been removed prior to drying the lamp assembly.
- Certain lamp assemblies may have two dust caps. Remove both dust caps if applicable.
- To avoid battery discharge, the engine must be running while the lamps are on.
- Allow the vehicle to idle for 30 minutes with the engine running and lamps turned on for moisture / condensation to evaporate.
- Remember to reinstall the dust cap(s) after drying the lamp assembly.



Example of dust cap location

#### **NOTICE**

Normal warranty applies for any lamp assembly with moisture / condensation.