

TITLE: ZG1400 SEAT INSPECTION

SERVICE INFORMATION

SUBJECT

Improper installation of the seat by the customer after initial purchase could damage the seat mounts and make it difficult to latch or prevent the seat from latching properly.

Kawasaki has created an inspection procedure to address any owner related questions about the proper way to install the seat on their ZG1400.

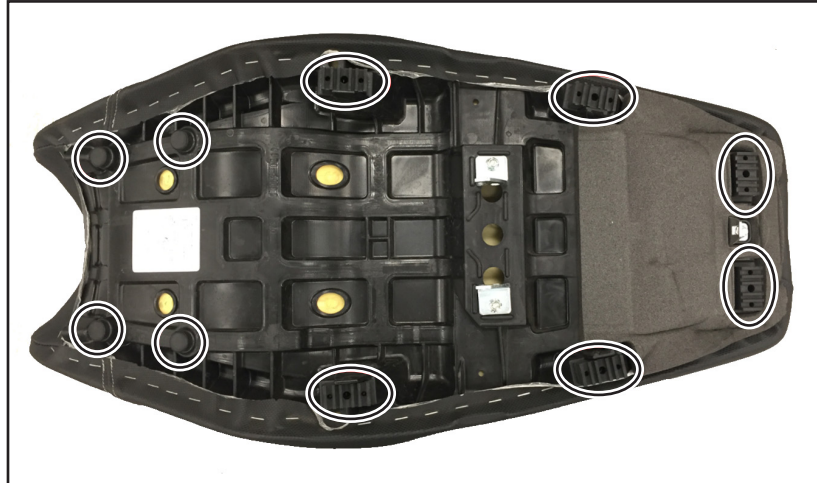
ELIGIBLE MODELS

All 2008 through 2020 ZG1400A/B/C/D/E models are eligible for inspection if the owner experiences a seat that will not latch properly.

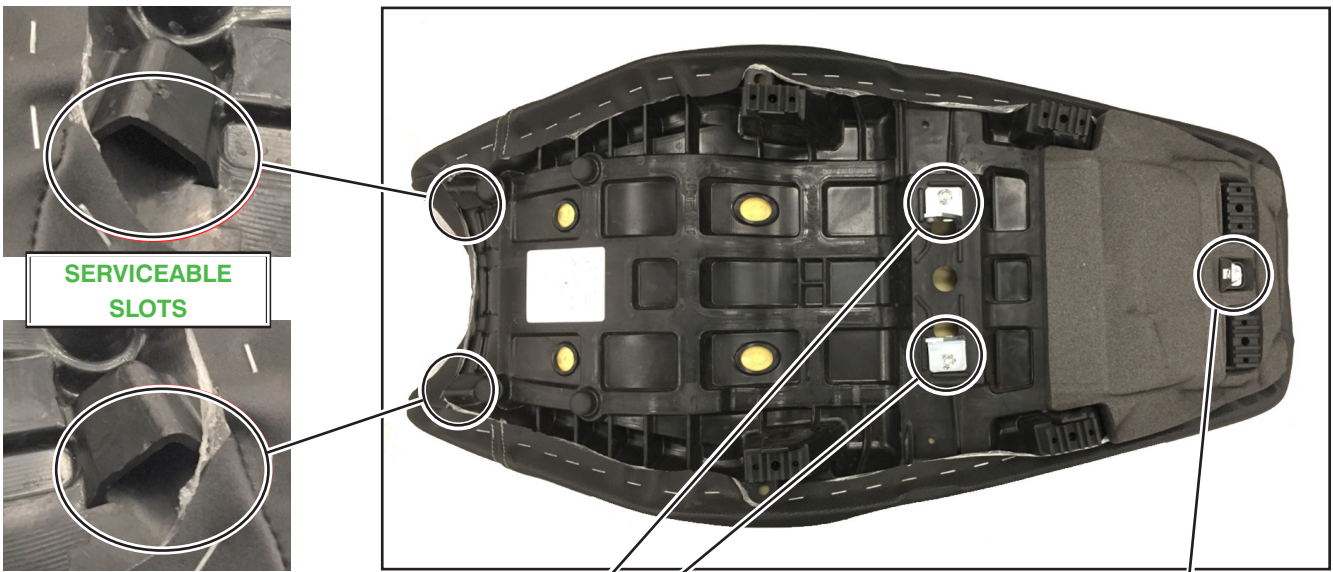


SEAT INSPECTION

- Verify that all of the seat dampers are present and in serviceable condition.



- Verify that the latching hardware is present and in serviceable condition.

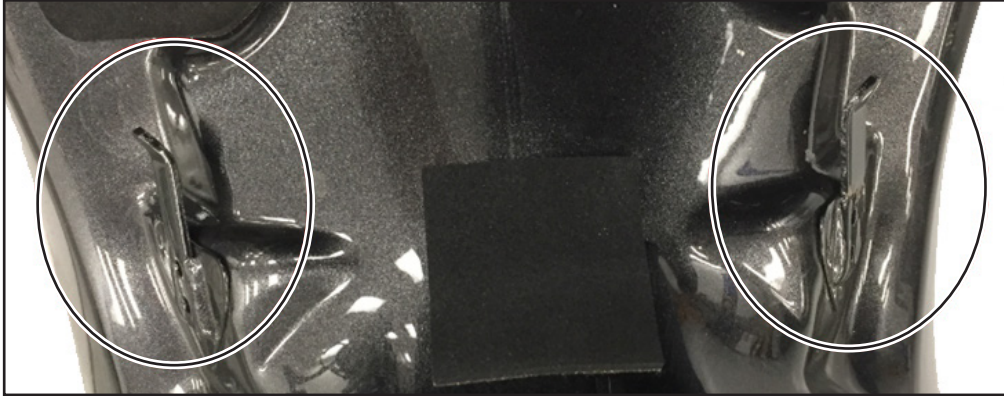


**SERVICEABLE
HOOKS**

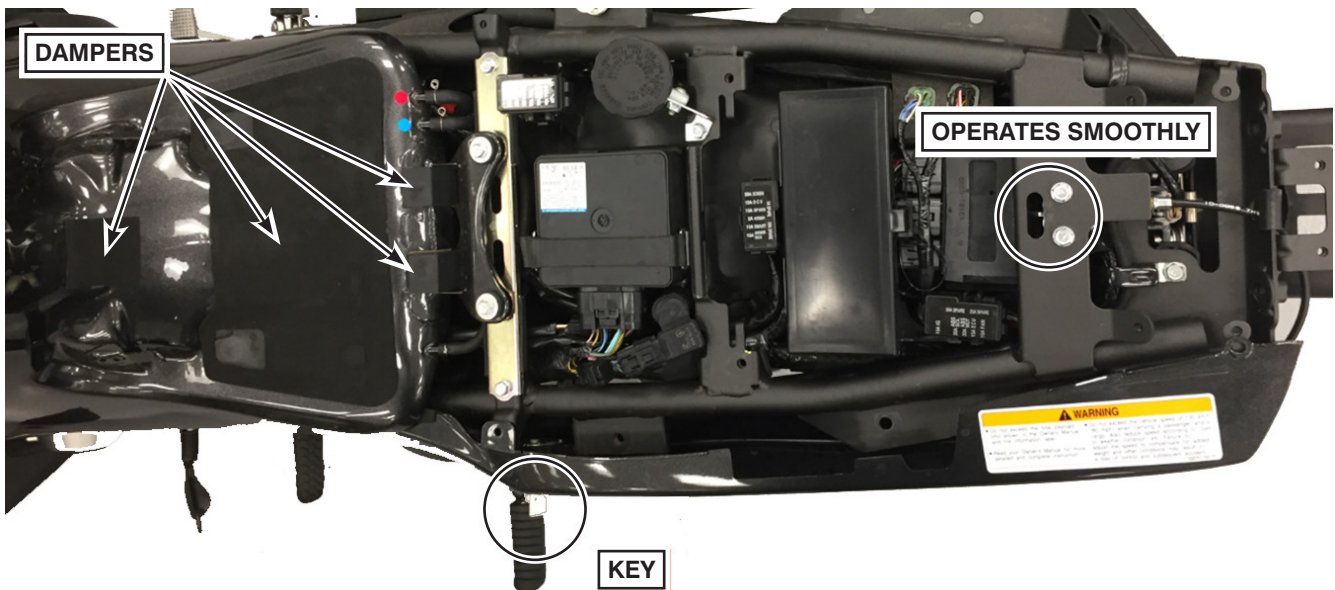


SEAT INSPECTION (continued)

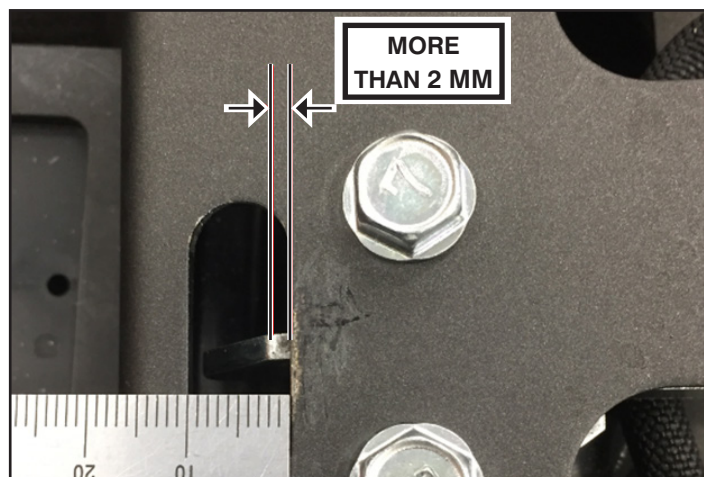
- Verify that the left and right tank hooks are straight as shown in standard condition.



- Verify that the dampers are present and in serviceable condition.
- Verify that the latch operates smoothly when using the key to open.



- Verify that the tip of the striker measures more than 2 mm from the subframe.



- Verify that nothing is stored under the seat and the tool kit compartment is completely closed.

SEAT REMOVAL & INSTALLATION

- Always remove and install the seat as outlined in the owner's manual.

GENERAL INFORMATION

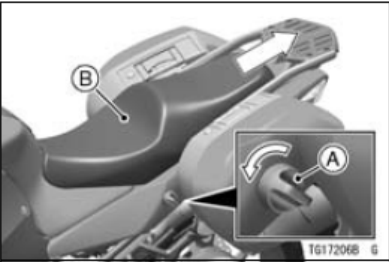
- Lift the rear of seat while turning the key knob counterclockwise.
- Remove the seat backwards.
- Remove the key knob.

Seat

The seat can be removed using the key knob.

Seat Removal

- Insert the key knob into the seat lock.



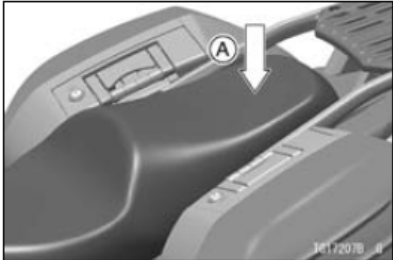
A. Key Knob
B. Seat

NOTE

○ If the seat removal is hard, be sure to insert the key knob fully into the seat

GENERAL INFORMATION

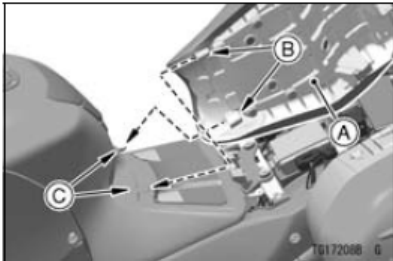
lock, then turn the key knob counterclockwise while strongly pushing down the rear part of the seat.



A. Push down.

Seat Installation

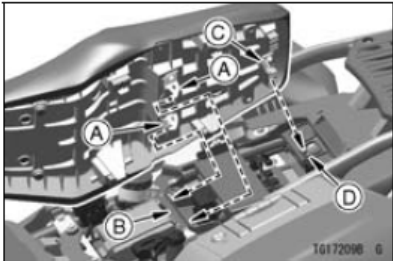
- Insert the brackets of the fuel tank into the slots on the front of the seat.



A. Seat
B. Slots
C. Brackets

- Insert the hooks on the middle of the seat under the frame, and the hook on the rear of the seat into the slot of the frame.

GENERAL INFORMATION



A. Hooks
B. Frame
C. Hook
D. Slot

- Push down the rear part of the seat until the lock clicks.
- Pull up the front and rear ends of the seat to make sure they are securely locked.

REPAIR

If during this inspection the following conditions exist, please contact Kawasaki Dealer Care at (800) 854-3800 for guidance.

- Damaged, missing or improperly adjusted parts are found.
- The seat cannot be securely latched even when parts are not found to be damaged, missing or improperly adjusted.

WARRANTY INFORMATION

This bulletin is service information only, not warranty authorization.