

## FT4827 Wheelchair Seat Hardware Loose.

Technical writer name  
Luc Carignan

Manual section 12

### First Level Parts (100% of 415 vehicles)

Material	Part Number	QTY
BOLT T 3/8" SPEC RECT HD GRD5	N99199-0102	8
BOLT T 3/8" SPEC RECT HD GRD5	N99199-02	8
3/8-24 nylon lock flanged nut	N620000039	16

Nb hours Level 1

1.0 hr

MQR

7621-2000

Disposal of parts		
Removed parts are:		When the retained check box is checked, the parts must be retained and returned in accordance with the usual warranty procedure to be reimbursed.
Discarded	Retained	
X	-	

Client	Order	Road numbers		VIN		QTY	Lang.	Customer	Target market	Plant	Config moteur	Model	NR	R1
New York City Transit - New York	L958	5439	5442	S92J9G9775533	S92J9G9775631	4	E	NYCT	US	PLB	TD	60	x	
New York City Transit - New York	L959	5443	5443	S92J0H9776118	S92J0H9776118	1	E	NYCT	US	PLB	TD	60	x	
New York City Transit - New York	LB59	5444	5484	S92J7H9776195	S92J8H9776379	41	E	NYCT	US	PLB	TD	60	x	
New York City Transit - New York	LA23	5485	5530	S92J5J9776390	S92J6J9776517	46	E	NYCT	US	PLB	TD	60	x	
New York City Transit - New York	LA73	8504	8507	L82J8J9776445	L82J8J9776476	4	E	NYCT	US	PLB	TD	40	x	
New York City Transit - New York	LB29	5531	5566	S92J9J9776897	S92J6J9776973	36	E	NYCT	US	PLB	TD	60	x	
New York City Transit - New York	LA76	8508	8525	L82J9J9776924	L82J6J9776976	18	E	NYCT	US	PLB	TD	40	x	
New York City Transit - New York	LA76	8527	8633	L82J5K9777005	L82J8K9777144	107	E	NYCT	US	PLB	TD	40	x	
New York City Transit - New York	LB99	5567	5802	S92J2J9776935	S92J5K9777000	36	E	NYCT	US	PLB	TD	60	x	
New York City Transit - New York	LB78	8526	8526	L82J3K9776984	L82J3K9776984	1	E	NYCT	US	PLB	TD	40	x	
New York City Transit - New York	LC32	8634	8754	L82JXK9777145	L82J5K9777277	121	E	NYCT	US	PLB	TD	40	x	

Jean-Nicolas  
Fournier

Digitally signed by Jean-Nicolas Fournier  
DN: cn=Jean-Nicolas Fournier, o=Nova Bus,  
email=jean-nicolas.fournier@volvo.com, c=CA  
Date: 2020.06.22 15:24:51 -04'00'

## MQR 2000 – Wheelchair Hardware Replacement

DESCRIPTION	TIME
Replace the bottom and upper T-bolts from the seats with the wheelchair hardware	1 hour

### Affected Contracts

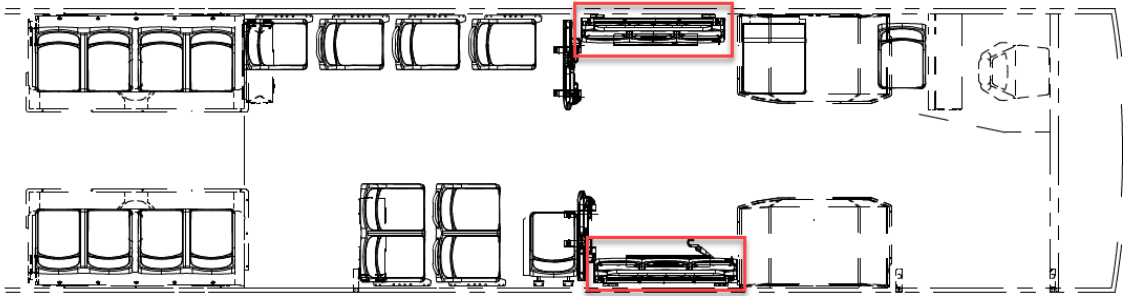
Contract	Number of vehicles
L958	4
L959	1
LA23	46
LB29	36
LB59	41
LB99	36
LA73	4
LA76	125
LB78	1
LC32	121
TOTAL	415

### Bill of Material

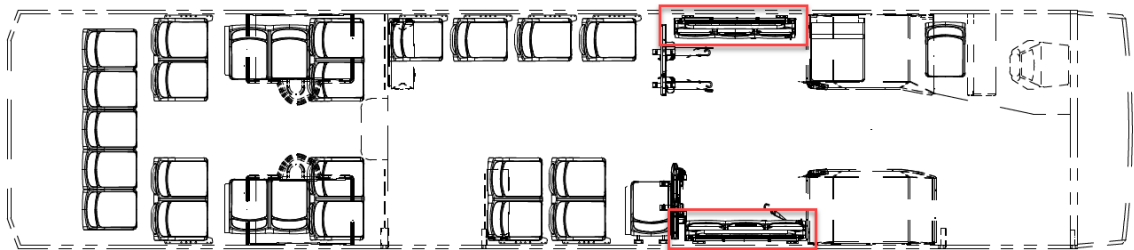
QTY	Part Number	Description	Replaces Part Number
8	N99199-01	Rectangular Head Bolt	N44620-01
8	N99199-02	Rectangular Head Bolt	N44620-02
16	N0224000	Hex Nut, 3/8F ZP	N37109
16	N84003	Washer Flat 3/8"	NA

WARNING: Follow your internal safety procedures.

1. Park the bus with the transmission in neutral (N). Place the battery switch and the master control switch to the OFF position.
2. Localize the seats with the wheelchair hardware (see Fig.)

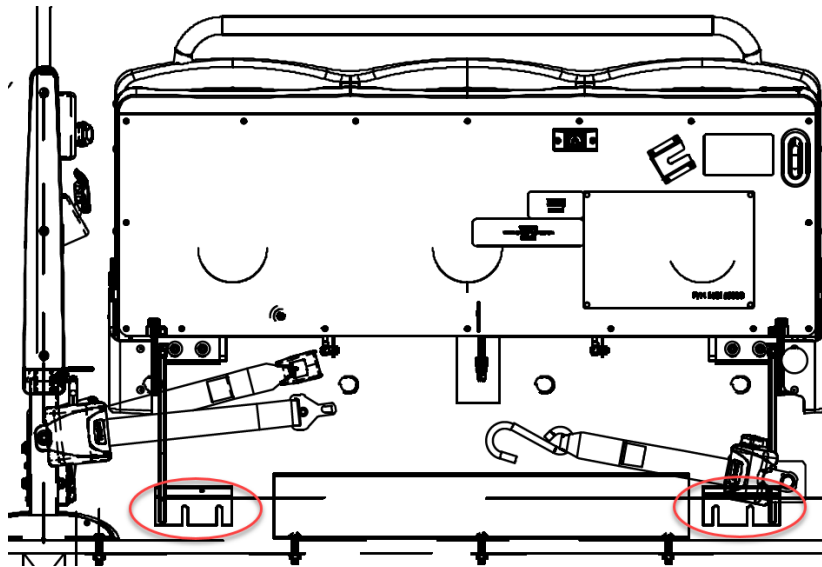


Affected seats on the 60ft fleets



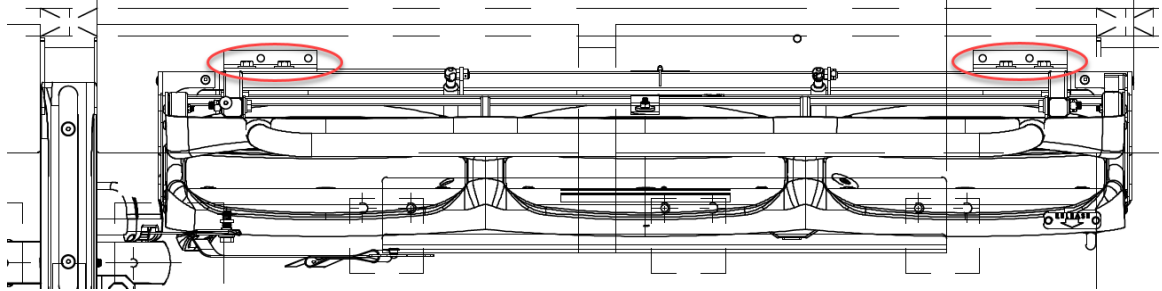
Affected seats on the 40ft fleets

3. Remove the 4 nuts P/N 37109 that affixes the seats onto the bottom rail with a 9/16" (14 mm) socket (see Fig.).



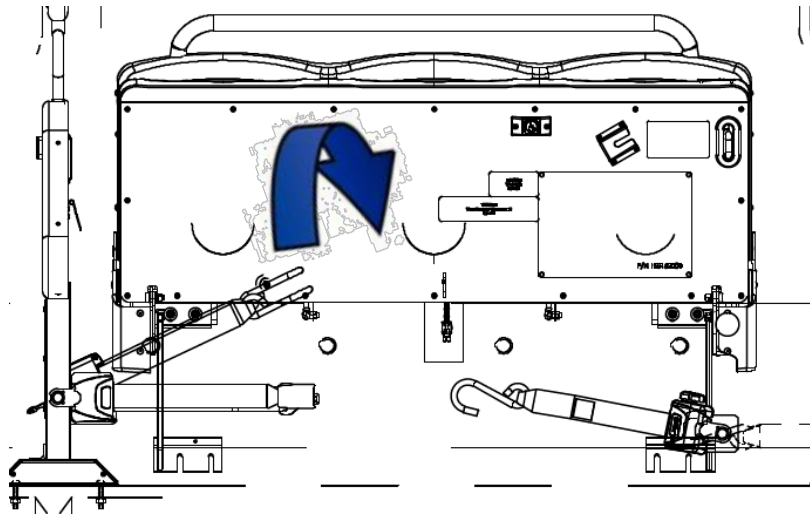
T-bolts to be removed from the bottom fiber rail

4. Remove the 4 nuts P/N 37109 that affixes the seats onto the upper rail with a 9/16" (14 mm) socket (see Fig.).



T-bolts to be removed from the upper aluminum rail

5. Carefully disconnect the seat from the upper and bottom T-bolts by pulling it up and forward (towards the center of the bus).



Move the seat by pulling it up and forward (towards the center of the bus)

6. Remove all T-bolts from the upper and bottom rail channels. They are one time use only.



Previous version of T-bolt (one time use only) and flanged nut to be removed and discarded.

7. Confirm that neither the upper aluminum rail nor the bottom fiber rail have any damage.
8. Install 4 new T-bolts PN N99199-01 where the previous N44620-01 T-bolts were installed in the upper rail channel, making sure the top puncture mark faces the center of the bus (see Fig.).
9. Install 4 new T-bolts PN N99199-02 where the previous N44620-02 T-bolts were installed in the bottom rail channel, making sure the top puncture mark faces the center of the bus (see Fig.).



Example of T-bolt with top puncture facing the center of the bus

10. Insert the upper and lower seat brackets onto the T-bolts. Confirm that the upper and lower brackets are lined up.
11. Insert the new washers N84003 and nuts N0224000. Torque them to 21 N.m (15 lb.ft) with a 9/16" (14 mm) socket. Only use manual tools.
12. Apply torque seal on the nuts.
13. Place the battery switch and the master control switch to the ON position.

The vehicle may return to service.