

June 19, 2020

Version 1

## Blower Motor Is Noisy, Runs Slowly, or Intermittently Stops Working

### AFFECTED VEHICLES

Year	Model	Trim Level	VIN Range
2014-18	RLX	ALL	ALL
2014, 2016-18	RLX Sport Hybrid	ALL	ALL

### SYMPTOM

The blower motor makes excessive noise, runs slowly, or intermittently stops working.

### CORRECTIVE ACTION

Inspect the dust and pollen filter and, if needed, replace it with a new activated charcoal filter. Then, replace the blower motor.

### PARTS INFORMATION

Part Name	Part Number	Quantity
Blower Motor	79310-TY2-A01	1
Filter Element (Activated Charcoal Filter)	80291-T6A-J01	1

### WARRANTY CLAIM INFORMATION

The normal warranty applies.

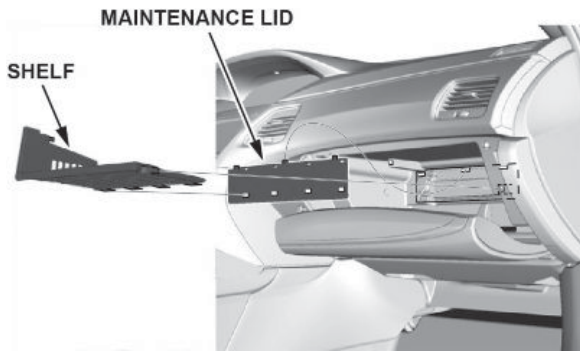
Operation Number	Description	Flat Rate Time	Defect Code	Symptom Code	Template ID	Failed Part Number
612120	2014-18 RLX/RLX Sport Hybrid: Inspect the filter (no replacement needed). Replace the blower motor.	0.3 hr	03214	03217	B20020A	79310-TY2-A01
612120	2014-18 RLX/RLX Sport Hybrid: Replace the filter and blower motor.	0.3 hr	03214	03217	B20020B	79310-TY2-A01

Skill Level: Repair Technician

**CLIENT INFORMATION:** The information in this bulletin is intended for use only by skilled technicians who have the proper tools, equipment, and training to correctly and safely maintain your vehicle. These procedures should not be attempted by "do-it-yourselfers," and you should not assume this bulletin applies to your vehicle, or that your vehicle has the condition described. To determine whether this information applies, contact an authorized Acura automobile dealer.

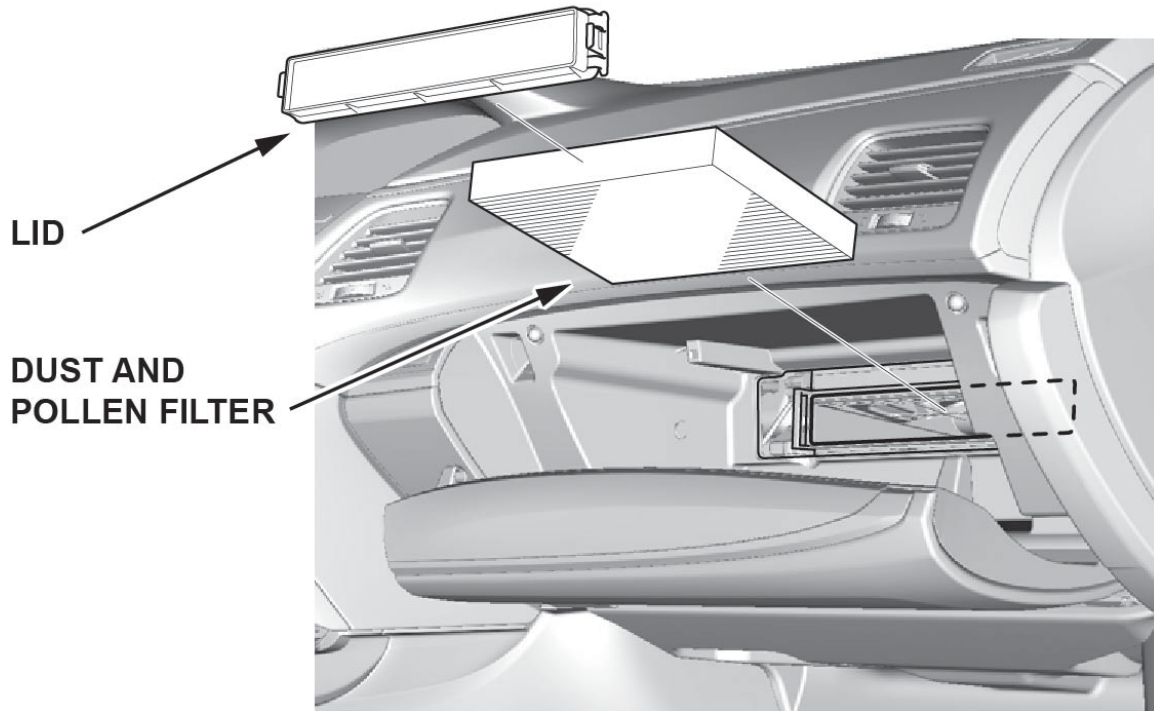
## INSPECTION

1. Turn the ignition to OFF.
2. Open the glove box.
3. Remove the shelf by carefully pulling it straight back.



4. Remove the maintenance lid.

5. Remove the lid, then the dust and pollen filter.



- If the filter is not an activated charcoal filter, replace it with a new activated charcoal filter. Then, go to REPAIR PROCEDURE.
- If the filter is an activated charcoal filter, do not replace it. Just install it. Then, go to REPAIR PROCEDURE.

*OLD DUST AND POLLEN FILTER*

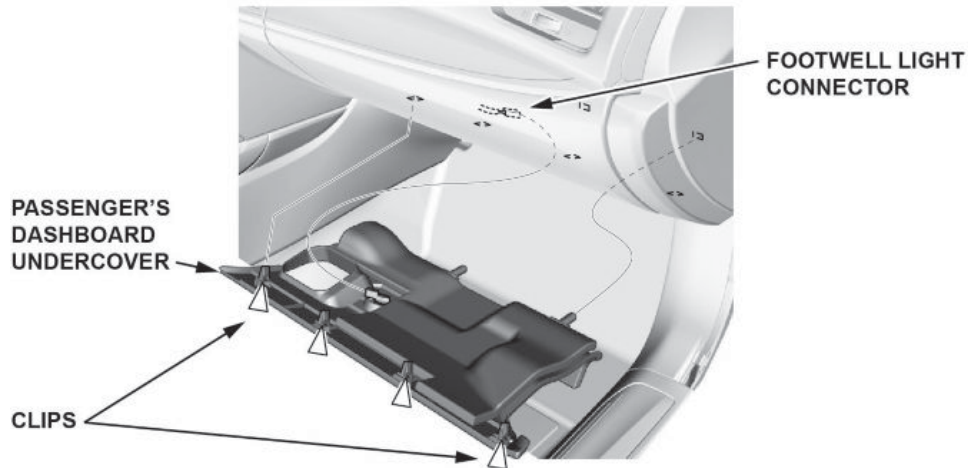


*NEW ACTIVATED CHARCOAL FILTER*



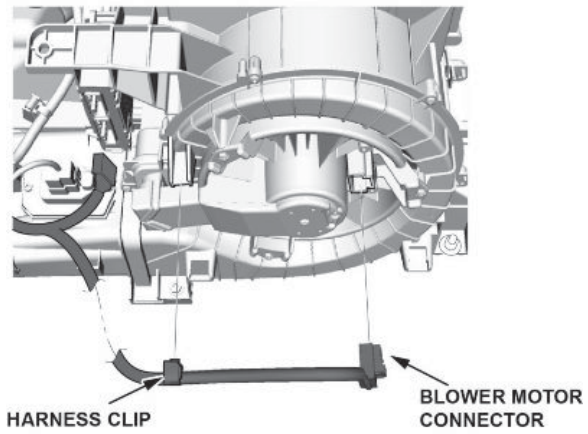
## REPAIR PROCEDURE

1. Remove the front passenger's floor mat.
2. Remove the passenger's dashboard undercover.

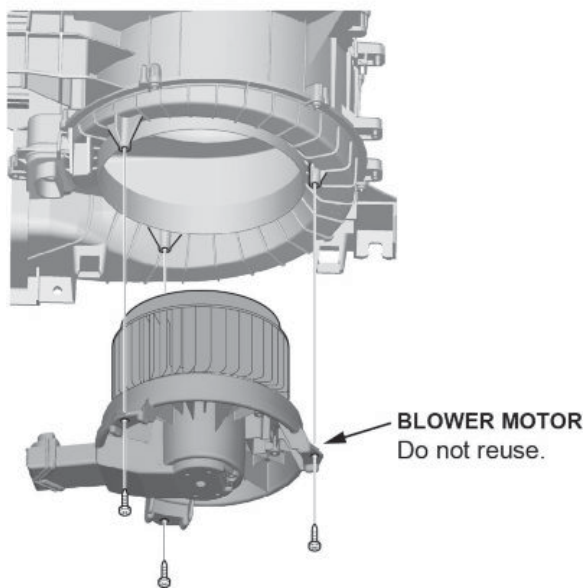


3. Disconnect the footwell light connector.

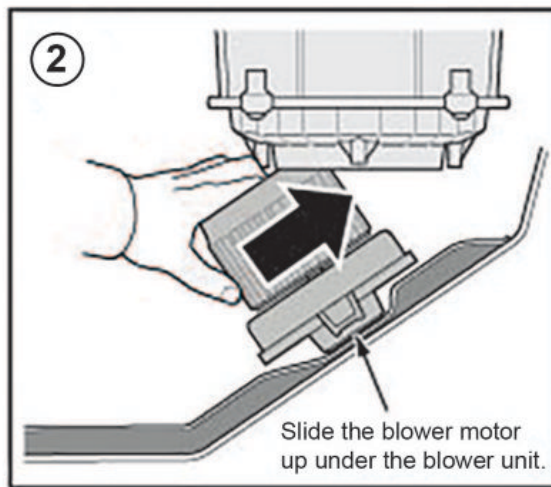
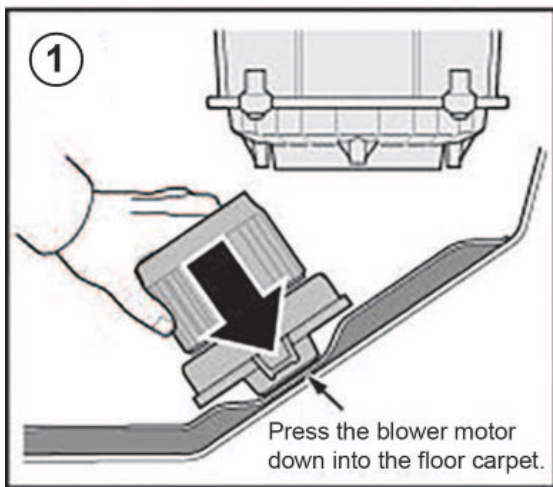
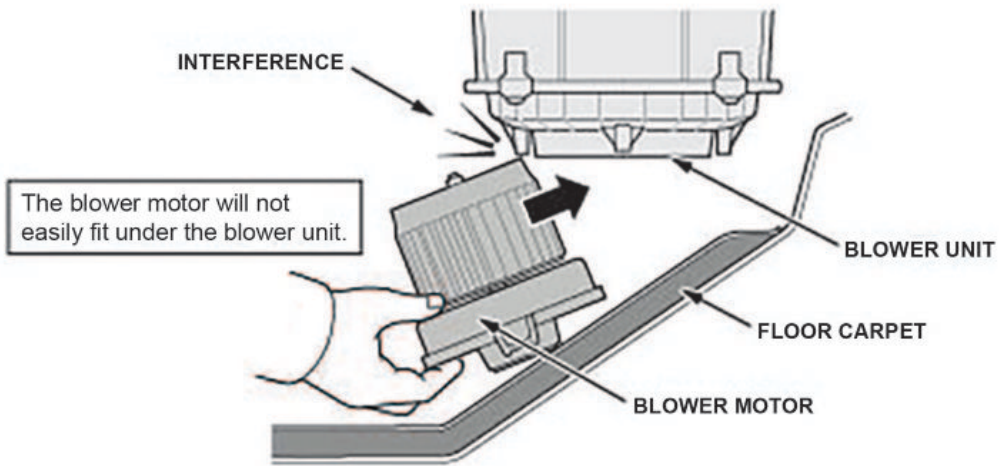
4. Disconnect the blower motor connector.



5. Remove the harness clip.
6. Remove the three screws and the blower motor.



7. Install the new blower motor with the three screws.



8. Install the harness clip, then connect the footwell and blower motor connector.

9. Install the front passenger's dashboard undercover.

10. Install the front passenger's side floor mat.

11. Check the operation of the blower motor.

END