



24-18-01 - MIL ON, DTCs P2004, P2014 and or P2015 Stored in ECM Fault Memory

Release date: 6/15/2020

## Condition

Applicable Vehicles					
Model(s)	Year	Eng. Code	Trans. Code	VIN Range From	VIN Range To
All	2006-2008	2.0T (BPY)	All	All	All
All	2008-2016	2.0T (CCTA/CBFA)	All	All	All

Revision Table			
Instance Number	Published Date	Version Number	Reason For Update
2045138/8	6/15/20	24-18-01	Update Top Tier Fuel Brochure part number.
2045138/7	2/5/18	V241801	To update parts table.
2045138/1	1/4/16	V241701	Original publication.

DTC	Description
P2004	Intake Manifold Flap for Air Flow Control Bank 1 Stuck Closed
P2014	Intake Manifold Runner Position Sensor/Switch Circuit
P2015	Sender for Intake Manifold Flap Position/Air Flow Control, Implausible Signal

## Technical Background

Perform 2 inspections before replacing the intake manifold.



**Tip:**

An ODIS intake manifold adaptation process must be performed after intake manifold replacement.



24-18-01 - MIL ON, DTCs P2004, P2014 and or P2015 Stored in ECM  
Fault Memory

Release date: 6/15/2020

---

**Inspection 1:**

**Vacuum line and vacuum tee restrictions (CCTA/CBFA).**

Vacuum lines and “T” fittings may become clogged with debris from production or increasing mileage.

This debris may cause a restriction that could affect the intake manifold operation and cause DTC P2014, P2015 faults.

**Inspection 2:**

**Intake Manifold flap (BPY/CCTA/CBFA).**

The intake manifold flap can separate internally and will not operate correctly with the regulator valve. See Figure 1. and Figure 2. for an example of a damaged flap disassembled.

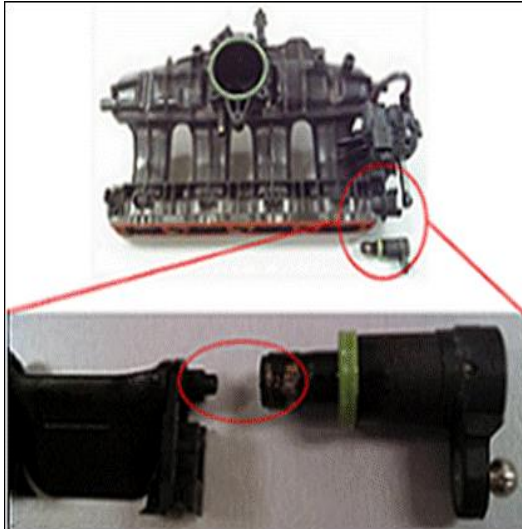


Figure 1.

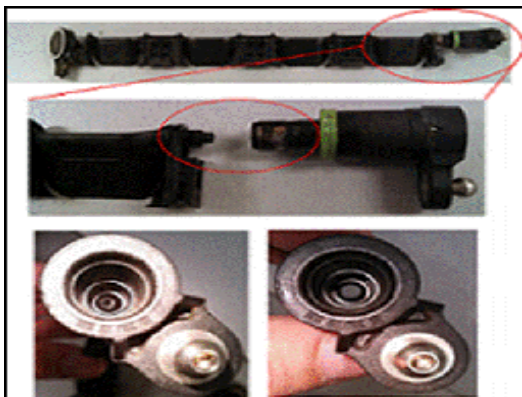


Figure 2.



24-18-01 - MIL ON, DTCs P2004, P2014 and or P2015 Stored in ECM  
Fault Memory

Release date: 6/15/2020

---

## Production Solution

Improved intake manifold design.

## Service

### Procedure 1:

#### Vacuum line and vacuum tee restrictions.

Ensure correct intake manifold is installed on engine, refer to ETKA.

The intake manifold runner can be checked for proper operation using MVB 143 field 3.

The vehicle must be driven in order to place a load on the engine.

The engine RPM should be quickly increased to at least 3000 RPM and released. MVB 143 field 3 value should immediately change from 0% up to 100%.

If the values in field 3 instantly change to 100%, the hose and fittings are not restricted. If no restriction has been identified, Continue procedure 2 diagnosis.

If there is a restriction, the values in field 3 will slowly increase or not increase at all. Inspect vacuum lines leading to intake manifold, and fittings, for restrictions (twisted, kinked hoses or blockages caused by debris).

Reposition or clean as required.

**24-18-01 - MIL ON, DTCs P2004, P2014 and or P2015 Stored in ECM Fault Memory**

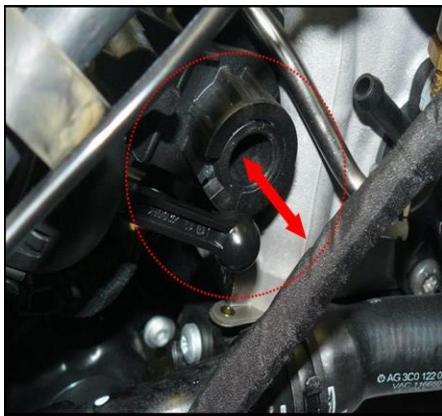
Release date: 6/15/2020

---

**Procedure 2:****Intake Manifold flap.**

Check intake manifold flaps and if necessary replace intake manifold.

- Remove the engine cover. See Repair Group 10 Engine Assembly in Elsa.
- Move the carrier plate by hand in an axial direction (Figure 3, red arrow) to check if the carrier plate can be pulled out.



**Figure 3.**

If the carrier plate can be pulled out, the flap has separated and the intake manifold must be replaced. See Repair Group 24 Multiport Fuel Injection in Elsa.



24-18-01 - MIL ON, DTCs P2004, P2014 and or P2015 Stored in ECM Fault Memory

Release date: 6/15/2020

If the carrier plate **cannot** be pulled out, perform the following procedure:

- Check the diagnostic limits of the flap with the ODIS tester.
- Under Motor, select Guided Functions (Figure 4).

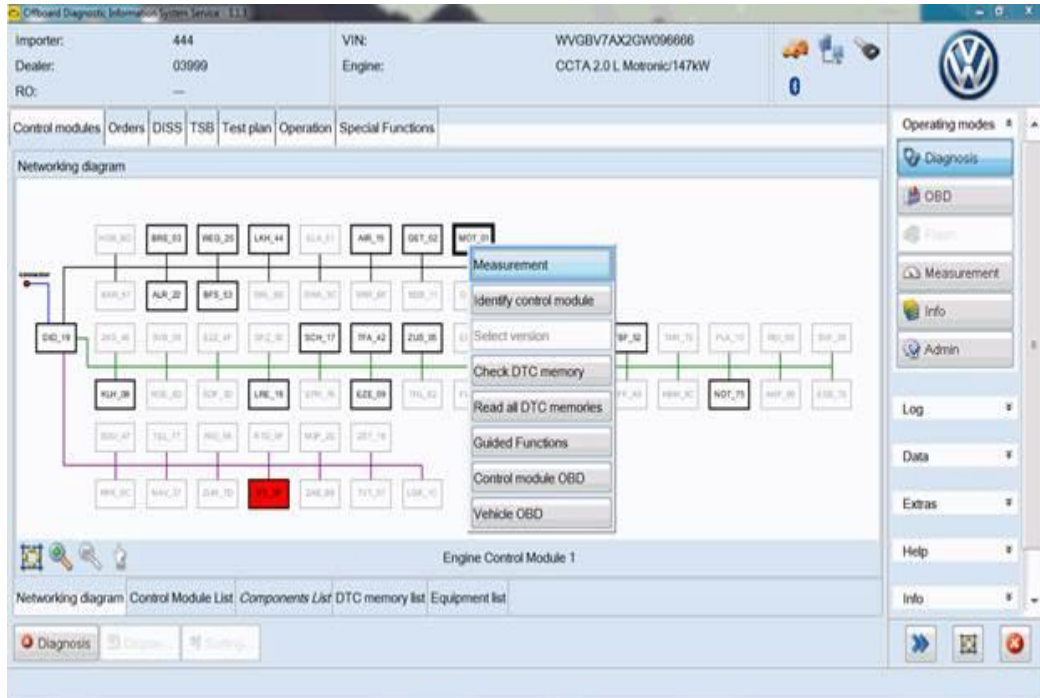


Figure 4



24-18-01 - MIL ON, DTCs P2004, P2014 and or P2015 Stored in ECM Fault Memory

Release date: 6/15/2020

- Select Adapting Engine Control Module (ECM) to intake manifold flap (Figure 5).

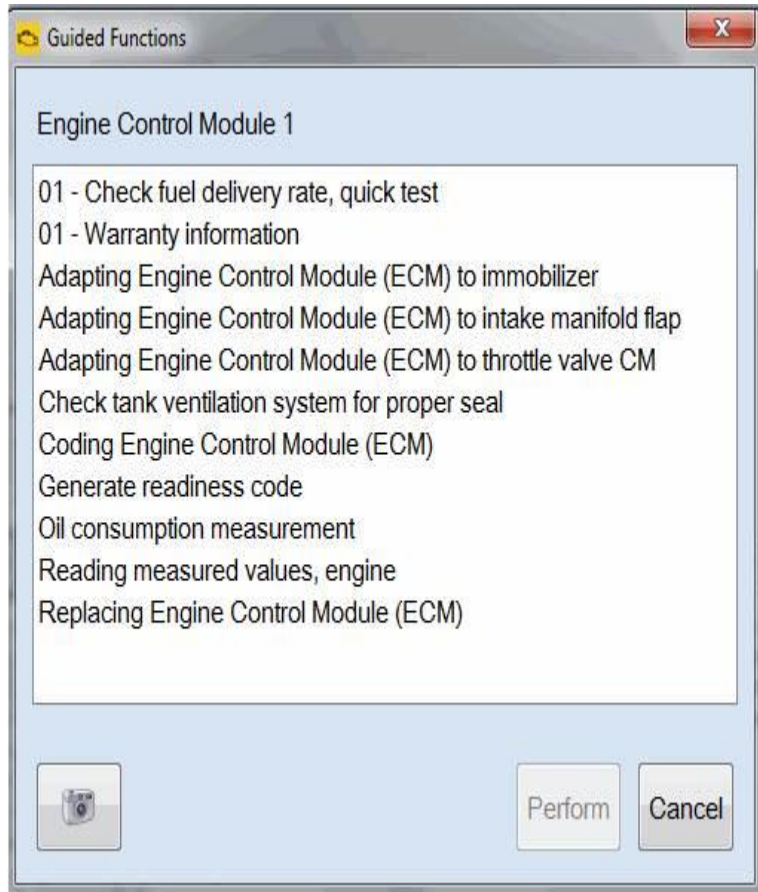


Figure 5

If the adaptation is not successful, the flap stop is worn internally, the intake manifold also has to be replaced. See Repair Group 24 Multiport Fuel Injection in Elsa.

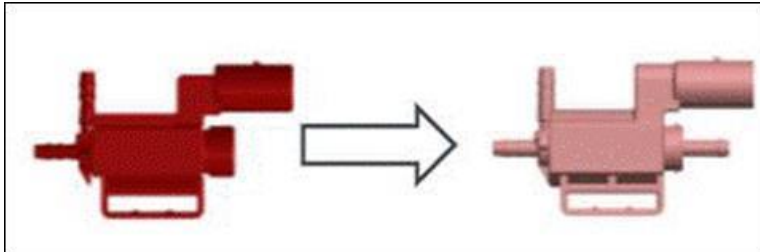


24-18-01 - MIL ON, DTCs P2004, P2014 and or P2015 Stored in ECM  
Fault Memory

Release date: 6/15/2020

 **Note:**

The new intake manifold will come with a new style Solenoid Valve for Intake Manifold Flap -N316- . Please reference TB 2047363 for installation of Clean Air Line.



 **Note:**

If no carrier plate, vacuum line or vacuum tee related damage is identified, and the adaptation passes, diagnose the faults using guided fault finding. This bulletin does not apply.

 **Note:**

During intake manifold replacement, all fuel injector seals must be replaced, see Elsa for installation instructions.

After performing Intake Manifold Replacement, add fuel additive G 001780M3 to the fuel tank. Also, refer the customer to brochure 2020 VW Top Tier Fuel (VWTOPTIERMAY20) and explain the benefits of using Top-Tier fuels as indicated in Technical Bulletin 2014815.



24-18-01 - MIL ON, DTCs P2004, P2014 and or P2015 Stored in ECM Fault Memory

Release date: 6/15/2020

**Warranty**

<b>To determine if this procedure is covered under Warranty, always refer to the Warranty Policies and Procedures Manual <sup>1)</sup></b>					
Model(s)	Year(s)	Eng. Code(s)	Trans. Code(s)	VIN Range From	VIN Range To
All	2006-2008	2.0T (BPY)	All	All	All
All	2008-2016	2.0T (CCTA/CBFA)	All	All	All
<b>SAGA Coding</b>					
<b>Claim Type:</b>		Use applicable Claim Type <sup>1)</sup>			
<b>Service Number:</b>	<b>Damage Code</b>	<b>HST</b>		<b>Damage Location (Depends on Service No.)</b>	
2447	0010	--		--	
<b>Parts Manufacturer</b>		All		MHO <sup>2)</sup>	
<b>Labor Operation <sup>3)</sup>: Charge Battery</b>		27068950 = 10 TU			
<b>Labor Operation <sup>3)</sup>: Inspection and/or repair hose</b>		24474199 = 30 TU			
<b>Labor Operation <sup>3)</sup>: Remove and Install Intake Manifold</b>		244719XX = See Elsa (if applicable)			
<b>Labor Operation <sup>3)</sup>: Intake Manifold Replace</b>		244755XX = See Elsa (if applicable)			
<b>Labor Operation <sup>3)</sup>: Install Clean Air Line</b>		24662399 = 20 TU			
<b>Labor Operation <sup>3)</sup>: Install Fuel Injectors (Seal Replacement)</b>		244020XX = See Elsa (if applicable)			
<b>Causal Part: Intake Manifold</b>		XXX 133 XXX X (BPY) XXX 133 XXX XX (CCTA, CBFA)			





24-18-01 - MIL ON, DTCs P2004, P2014 and or P2015 Stored in ECM Fault Memory

Release date: 6/15/2020

<b>Outside Material:</b> 2020 VW Top Tier Fuel Brochure	VWTOPTIERMAY20	\$1.50
<b>Diagnostic Time <sup>4)</sup></b>		
<b>GFF Time expenditure</b>	01500000 = Actual GFF print out	YES
<b>Road Test</b>	01210002 = 10 TU 01210004 = 10 TU	YES
<b>Technical Diagnosis</b>	01320000 = 10 TU max.	YES
<b>Claim Comment:</b> Input "As per Technical Bulletin 2045138" in comment section of Warranty Claim.		
<p><sup>1)</sup> Vehicle may be outside any Warranty in which case this Technical Bulletin is informational only.</p> <p><sup>2)</sup> Code per warranty vendor code policy.</p> <p><sup>3)</sup> Labor Time Units (TUs) are subject to change with ELSA updates.</p> <p><sup>4)</sup> Documentation required per Warranty Policies and Procedures Manual.</p>		

### Required Parts and Tools

Part No:	Part Description	Quantity
06F 133 201 P (BPY)	Intake Manifold	1 (If Necessary)
06D 998 907 (BPY)	Seals	4 (If Necessary)
06F 129 717 D (BPY)	Gasket	1 (If Necessary)
06J 133 201 BH (CCTA/CBFA)	Intake Manifold	1 (If Necessary)
06J 998 907 * (CCTA/CBFA)	Seals	4 (If Necessary)
N 107 732 01 (CCTA/CBFA)	Flat- headed Screw with Torx (thread cutting)	1
06H 133 583 F (CCTA/CBFA)	Clean Air Hose	1



24-18-01 - MIL ON, DTCs P2004, P2014 and or P2015 Stored in ECM Fault Memory

Release date: 6/15/2020

06E 127 065 G	Adapter	2 (If Necessary)
06F 129 717 D (CCTA/CBFA)	Gasket	1 (If Necessary)
G 001780M3	Injector Cleaner	1
VWTOPTIERMAY20	2020 VW Top Tier Fuel Brochure	1

Part numbers are accurate at time of publication. Always refer to ETKA for the latest part information.

Tool Description	Tool No:
Midtronics Battery Tester/Charger	GRX3000VAS or MTRMSP0702 battery maintainer/charger
VAS Diagnostic Tool	VAS 6150/X & VAS 6160/X and ODIS Service with: current online updates



Additional copies of the Top Tier fuel brochure may be ordered from Volkswagen Technical Literature Ordering Center at [vwmanualshop.com](http://vwmanualshop.com)

Additional Information

All part and service references provided in this Technical Bulletin are subject to change and/or removal. Always check with your Parts Dept. and Repair Manuals for the latest information.