

June 2020
D20M3

Subject: DETROIT™ Export DD15 and DD13 Valve Lash Adjustment, Throttle Connector O-ring, and TC Air Line Spacer Installation

Models Affected: Export DD15 and DD13 Engines

General Information

Daimler Trucks North America LLC, on behalf of its DETROIT™ Powertrain Division, is initiating Field Service Campaign D20M3 to modify the vehicles mentioned above.

Certain DETROIT™ Export DD15® and DD13® engines will need the following repairs completed:

- Installation of the missing spacer on the turbo-compound air supply line.
- Installation of the missing O-ring on the throttle electrical connector.
- Valve lash and engine brake adjustment.

There are approximately 47 engines affected by this Field Service Campaign.

These units are separated into three groups. Depending what group the affected unit falls under will decide what modifications are completed. **All 47 units require a valve lash and engine brake adjustment.**

Group A requires valve lash and brake adjustment, installation of the missing spacer on the turbo-compound air supply line, and the installation of the missing O-ring on the throttle electrical connector.

Group B requires valve lash and brake adjustment as well as the installation of the missing throttle connector O-ring.

Group C requires a valve lash and engine brake adjustment ONLY.

Work Instructions

Please refer to the attached work instructions. **Prior to performing the campaign, check the vehicle for a completion sticker (Form WAR261).**

June 2020
D20M3

Parts Required

Table 1 – Parts Required for D20M3-A

Campaign Group	Part Number	Part Description	Qty per Kit
A	DDE A4721310053	COMPRESSED AIR LINE SPACER	1
A	DDE A0209971245	CONN O-RING	1

Table 2 – Parts Required for D20M3-B

Campaign Group	Part Number	Part Description	Qty per Kit
B	DDE A0209971245	CONN O-RING	1

Labor Allowance

Table 3 – Labor Allowance for D20M3

Procedure	Time Allowed (hours)	SRT Number	Corrective Action
D20M3-A			
Install TC Air Line Spacer, Install Connector O-ring, Valve Lash and Engine Brake Lash Adjustment	1.2 hours	996-F067A	12-Repair Recall/Campaign
D20M3-B			
Install Connector O-ring, Valve Lash and Engine Brake Lash Adjustment	1.1 hours	996-F067B	12-Repair Recall/Campaign
D20M3-C			
Valve Lash and Engine Brake Lash Adjustment	1.0 hour	996-F067C	12-Repair Recall/Campaign

Claim Reimbursement

NOTE: There are three different labor codes listed below. Use only one of these codes when filing the claim, depending on the necessary repair.

You will be reimbursed for your parts, labor, and handling (landed cost for Export Distributors) by submitting your claim through the Warranty system within 30 days of completing this campaign. Please reference the following information in OWL:

June 2020
D20M3

Claim Type	Field Service Campaign
Campaign (number with appropriate condition code)	D20M3
Component Code	045-008-054
Cause Code	A1-Campaign
Primary Failed Part	DDE A4720550821
Procedure A¹	
Use this operation if the vehicle falls into Group A	
Labor Number	996-F067A
Labor Hours	1.2 hours Install TC Air Line Spacer and Connector O-ring, Valve Lash and Engine Brake Lash Adjustment
Part Number	DDE A4721310053 and DDE A0209971245
Parts Return	NONE
Procedure B¹	
Use this operation if the vehicle falls into Group B	
Labor Number	996-F067B
Labor Hours	1.1 hours Install Connector O-ring, Valve Lash and Engine Brake Lash Adjustment
Part Number	DDE A0209971245
Parts Return	NONE
Procedure C¹	
Use this operation if the vehicle falls into Group C	
Labor Number	996-F067C
Labor Hours	1.0 hours Valve Lash and Engine Brake Lash Adjustment
Part Number	NONE
Parts Return	NONE
¹ Administrative time (SRT 939-6010A) for 0.3 hours is automatically added to the claim.	

June 2020
D20M3

This Field Service Campaign will terminate on **June 1, 2021**. Dealers will be notified of any changes.

IMPORTANT: OWL must be viewed prior to beginning work to ensure the vehicle is involved and the campaign has not previously been completed.

All claims must be submitted within 30 days of the repair and within 30 days of the termination date of the campaign. U.S. and Canadian Dealers: All excess inventory to be returned to the PDC following the conclusion of the campaign must be returned in resalable condition to the Memphis PDC within 90 days from the termination date. Please submit a PAR to request return to the Memphis PDC. (Canadian dealers should return the kits to their facing PDC.) Export Distributors: Excess inventory may be returned as noted for U.S. and Canadian dealers. Export locations will pay freight to return kits. Export Distributors: Excess inventory is not returnable.

For questions, U.S. and Canadian dealers, contact the Warranty Campaigns Department via Web inquiry at DTNACconnect.com / WSC, or the Customer Assistance Center at (800) 385-4357. Export distributors submit a Web inquiry or contact your International Service Manager.

May 2020
D20M3

Detroit Diesel Corporation
13400 Outer Drive, West
Detroit, Michigan 48239-4001
Telephone: 313-592-5000

****Copy of Notice to Owner****

Subject: **Field Service Campaign D20M4**

DETROIT™ Export DD15 and DD13 Valve Lash Adjustment, Throttle Connector O-ring, and TC Air Line Spacer Installation

Daimler Trucks North America LLC, on behalf of its DETROIT™ Powertrain Division, is initiating Field Service Campaign D20M3 to modify the vehicles mentioned above.

Certain DETROIT™ Export DD15® and DD13® engines will need the following repairs completed:

- Installation of the missing spacer on the turbo-compound air supply line.
- Installation of the missing O-ring on the throttle electrical connector.
- Valve lash and engine brake adjustment.

Records available to us indicate that your vehicle has one of the eligible engines. Instructions for this Field Service Campaign have been sent to your local Detroit Diesel Authorized Repair Facility and the labor time required to perform this software update is approximately **1.2** hours.

Please contact a Detroit Diesel Authorized Repair Facility to arrange to have the Field Service Campaign performed. Check your local Freightliner / Wester Star / Detroit representative website for authorized repair locations.

You must make an appointment with the repair facility at least two weeks in advance of the actual repair in order for the repair facility to order and receive the necessary parts to complete this Field Service Campaign. Failure to provide advance notification to the repair facility may result in a delayed repair.

This service will be completed for you at no charge, prior to **June 1, 2021**, under the provisions of this notice.

We are sorry to cause you this inconvenience; however, we have taken this action in the interest of your continued satisfaction with our products.

WARRANTY CAMPAIGNS DEPARTMENT

Enclosure

Work Instructions

Subject: Detroit Export DD15 and DD13 Valve Lash Adjustment, Throttle Connector O-ring, and TC Air Line Spacer Installation

Models Affected: Export DD15 and DD13 Engines

Corrective Procedure – D20M3-A

1. See above tables for required parts.
2. Please follow the EPA07/10/GHG14 Engine Manual (DDC-SVC-MAN-0081) sections 26.7 and 26.8 for Valve Lash and Engine Brake Lash Adjustment procedures.
3. Install the Turbo Compound Mounting Bolt Spacer by following the procedure “Turbo Compound Air Line Mounting Bolt Spacer Installation” shown below. Continue to step 4.

Turbo Compound Air Line Mounting Bolt Spacer Installation

1. Remove air line mounting bolt #3, install the spacer in between the air line bracket and engine block.
2. Reinstall mounting bolt #3. Torque to 30 N·m (22 lb·ft).

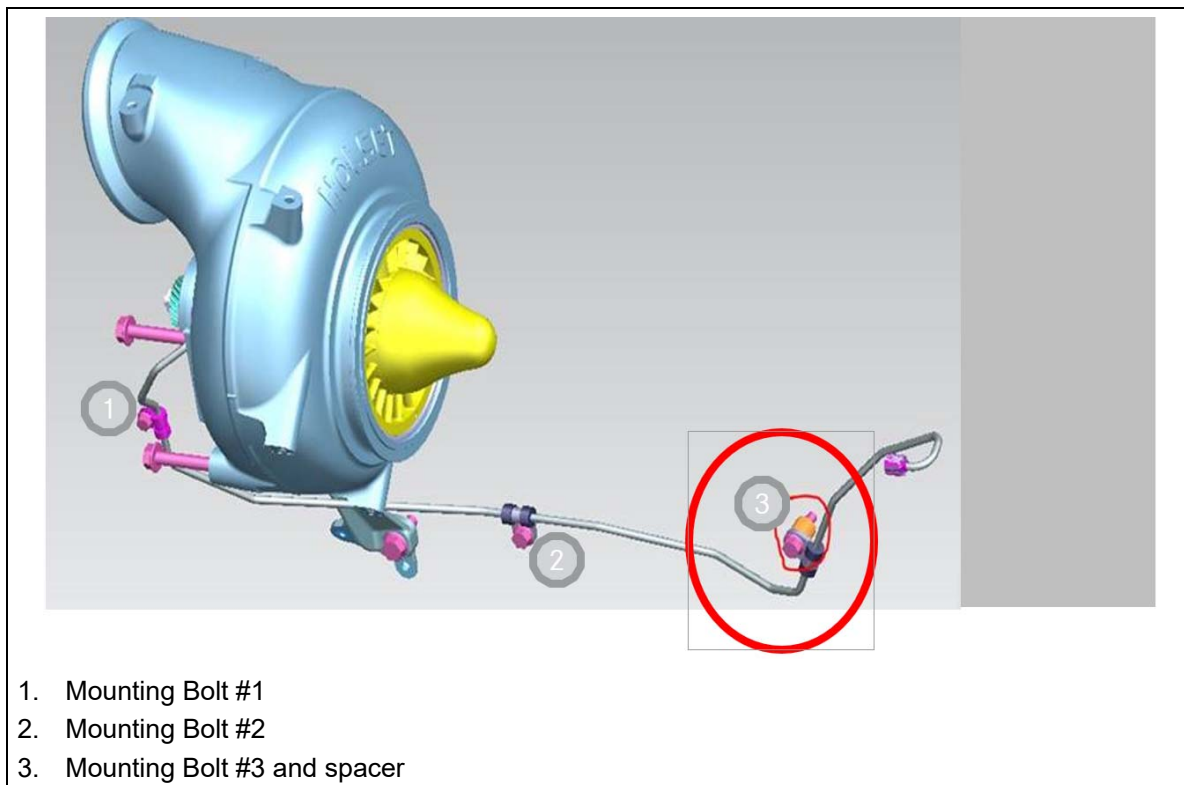


Fig. 1, Turbo Compound Air Line

May 2020
D20M3

4. Install the Throttle Connector O-ring by following the procedure “Throttle Valve Electrical Connector O-Ring Installation” shown below.

Throttle Valve Electrical Connector O-Ring Installation

1. Remove the throttle valve electrical connector retaining clip.
2. Install the O-ring.
3. Reinstall the throttle valve electrical connector retaining clip.

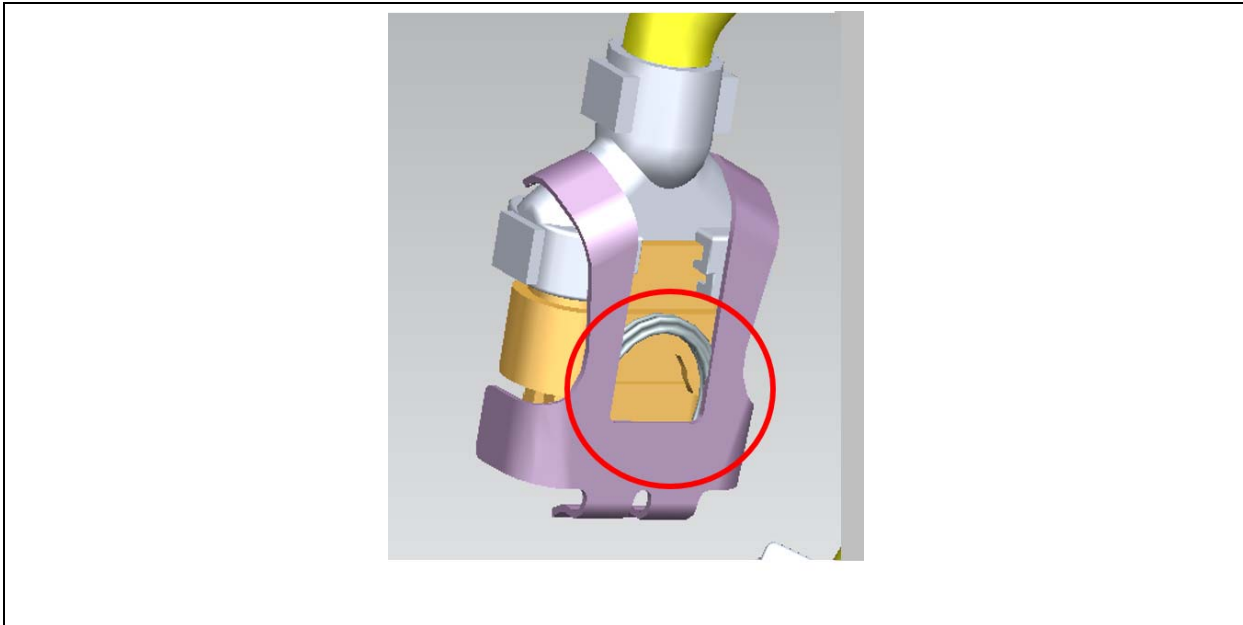


Fig. 2, Throttle Valve Electrical Connector O-Ring

Corrective Procedure – D20M3-B

1. See above tables for required parts.
2. Please follow the EPA07/10/GHG14 Engine Manual (DDC-SVC-MAN-0081) sections 26.7 and 26.8 for Valve Lash and Engine Brake Lash Adjustment procedures.
5. Install the Throttle Connector O-ring by following the procedure “Throttle Valve Electrical Connector O-Ring Installation” shown below.

Throttle Connector O-ring Installation

1. Remove the throttle valve electrical connector retaining clip.
2. Install the O-ring.
3. Reinstall the throttle valve electrical connector retaining clip.

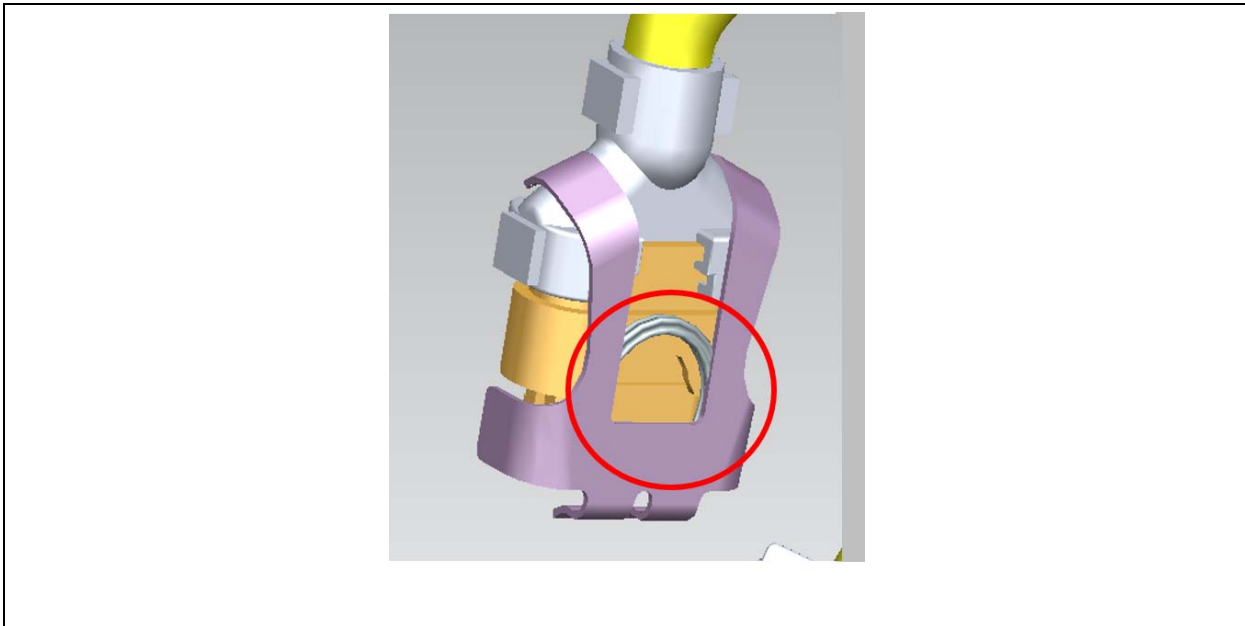


Fig. 2, Throttle Valve Electrical Connector O-Ring

Corrective Procedure – D20M3-C

1. No parts installation is required.
2. Please follow the EPA07/10/GHG14 Engine Manual (DDC-SVC-MAN-0081) sections 26.7 and 26.8 for Valve Lash and Engine Brake Lash Adjustment procedures.

Completion Stickers

- Upon completion of Field Service Campaign D20M3, clean a spot on the base label (Form WAR259), write the Field Service Campaign Number (D20M3) on a blank, black completion sticker (Form WAR261), and attach it to the base label.
- Label ordering info: [DTNAConnect](#) > Services and Reference > Publications & Warranty Supplies > Warranty