



NUMBER: 09-006-20 REV. A

GROUP: 09 - Engine

DATE: May 23, 2020

This bulletin is supplied as technical information only and is not an authorization for repair. No part of this publication may be reproduced, stored in a retrieval system, or transmitted, in any form or by any means, electronic, mechanical, photocopying, or otherwise, without written permission of FCA US LLC.

This bulletin supersedes Service Bulletin 09-005-20, dated May 16, 2020, which should be removed from your files. All revisions are highlighted with **asterisks**** and include updating repair procedure.**

NOTE: This bulletin supersedes all other published bulletins and service information for only the model years, engines and vehicles listed regarding to oil consumption diagnosis. For all other model years, engines and vehicles not listed in this bulletin standard diagnosis applies.

SUBJECT:

2.4L Engine Oil Consumption Test

OVERVIEW:

This bulletin involves performing an oil consumption verification test.

MODELS:

2015 - 2017	(UF)	Chrysler 200
2013 - 2016	(PF)	Dodge Dart
2014 - 2019	(KL)	Jeep Cherokee
2015 - 2018	(BU)	Jeep Renegade
2015 - 2018	(VM)	RAM ProMaster City
2017 - 2018	(MP)	Jeep Compass
2016 - 2018	(FB)	FIAT 500X

NOTE: This bulletin applies to vehicles within the following markets/countries: North America.

NOTE: This bulletin applies to vehicles equipped with either a 2.4L I4 Multiair Engine (Sales Code ED6), 2.4L I4 PZEV Multiair Engine (Sales Code ED8), 2.4L I4 PZEV Multiair Engine W/ ESS (Sales Code EDE) or 2.4L I4 Multiair Engine W/ ESS (Sales Code EDD).

SYMPTOM/CONDITION:

The customer may comment that the vehicles engine oil level is low or they need to add oil between oil change intervals and no visible signs of oil leaking from the engine.

DIAGNOSIS:

The following test is used to determine the source of excessive internal oil consumption.

NOTE: A few drops of external oil leakage per mile can quickly account for the loss of one quart of oil in a few hundred miles, ensure no external engine oil leaks are present.

- **Oil leakage is not the same as oil consumption and all external leakage must be eliminated before any action can be taken to verify and/or correct oil consumption complaints.**
1. Verify no external oil leaks are present.
 2. Are any external oil leaks present?
 - YES>>> This Bulletin does not apply. Normal diagnosis should be performed, and all external oil leaks should be repaired before performing an oil consumption test.
 - NO>>> Proceed to [Step 1](#) of the Repair Procedure.

If the customer describes the symptom/condition listed above, perform the Repair Procedure.

REPAIR PROCEDURE:**Oil Consumption Test**

1. Ensure the test vehicle has a minimum of 2400 km (1500 miles) until the next oil change is required. If the vehicle does not have 1500 miles wait until the scheduled oil change to start the test.
2. Check the oil level at least 5 minutes after a hot shutdown with the vehicle on a level surface.
3. Ensure the oil level is at the "FULL" mark, if necessary top off the oil to the "FULL" mark on the dipstick ([Fig. 1](#)).

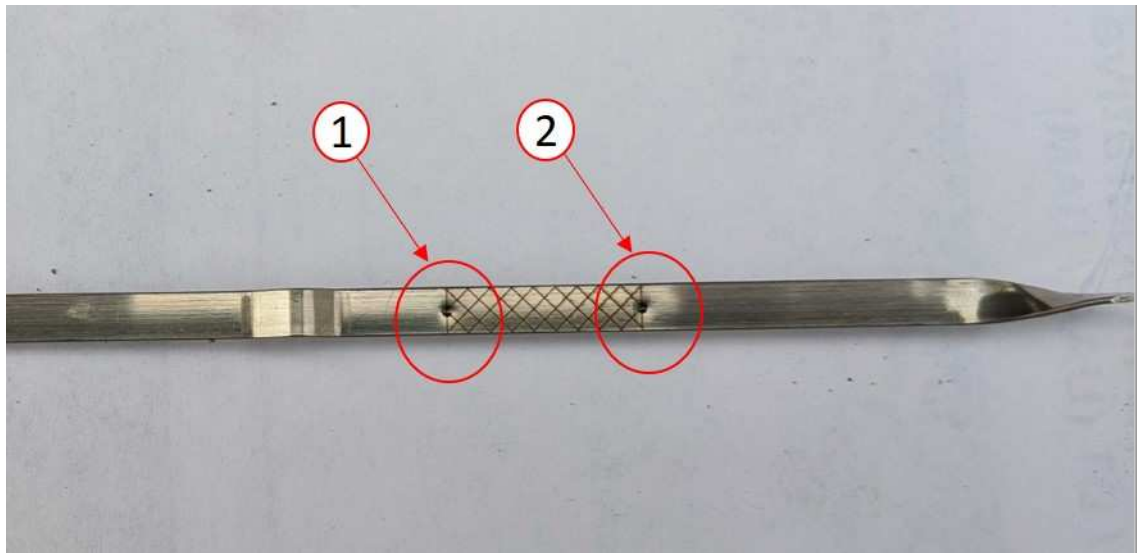


Fig. 1
Oil Dipstick Levels

- 1 - "FULL"
2 - "ADD"

4. Tamper proof the oil pan drain plug, oil filter, dipstick and oil fill cap with a black light marking device (pen), paint pen or touch-up paint.

NOTE: The use of a black light marking device is recommended so the marks can only be seen with a ultraviolet light.

5. Record the vehicle mileage. Note the oil level is at the 'full' mark 5 minutes after hot shut-down and date (Fig. 1) .
6. Instruct the customer to drive the vehicle as usual.
7. Require the customer to return to the servicing dealer after accumulating 1500-1700 miles.

CAUTION! Failure to confirm the oil level between 2400–2700 km (1500–1700 miles) voids the test and requires a new test to be performed.

8. Return the vehicle back to the customer for the 2400–2700 km (1500–1700 mile) test drive. use LOP (09-00-00-93) no further action is needed at this time.
9. When the vehicle returns for the remaining steps, verify that no evidence of tampering has happened.
10. Check the oil level at least 5 minutes after a hot shutdown on a level surface. If the oil level is at or above the half way point between the “FULL” and “ADD” mark the engine is in an acceptable condition and no further service action required (Fig. 2) .

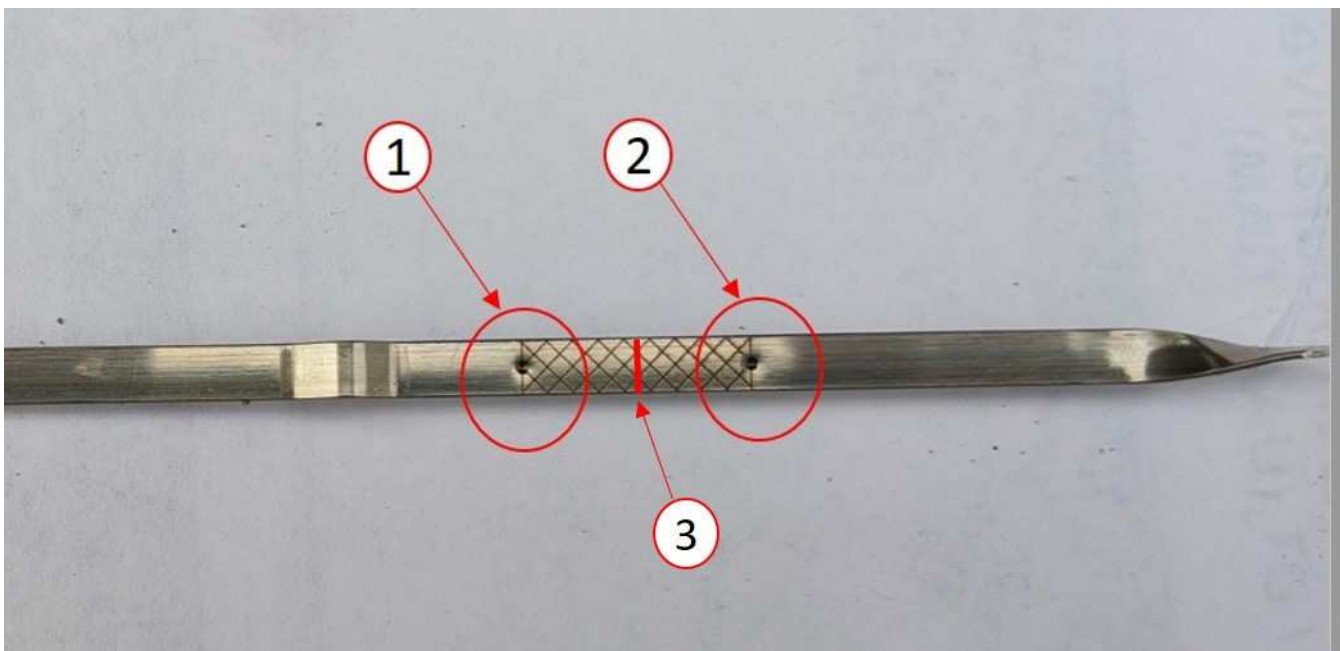


Fig. 2
Oil Dipstick Half Way Level

- 1 - "FULL"
- 2 - "ADD"
- 3- "Half Way Mark"

11. ****If the oil level is below the half way point and “ADD” mark (Fig. 2) , please submit a digital imaging request to Powertrain Service Center with a copy of the repair order, maintenance records, oil consumption documentation, serial number, and Repair/Replace Worksheet for authorization for a long block replacement approval.****

POLICY:

Reimbursable within the provisions of the warranty.

TIME ALLOWANCE:

Labor Operation No:	Description	Skill Category	Amount
09-00-00-93	Oil Consumption Test (0 - Introduction)	1 - Engine Repair and Performance	0.5 Hrs.

FAILURE CODE:

ZZ	Service Action
----	----------------