



**NUMBER:** 09-003-20 REV. C

**GROUP:** 09 - Engine

**DATE:** May 20, 2020

*This bulletin is supplied as technical information only and is not an authorization for repair. No part of this publication may be reproduced, stored in a retrieval system, or transmitted, in any form or by any means, electronic, mechanical, photocopying, or otherwise, without written permission of FCA US LLC.*

**This bulletin supersedes Service Bulletin 09-003-20 REV. B, dated March 27, 2020, which should be removed from your files. All revisions are highlighted with **\*\*asterisks\*\*** and include additional diagnostic steps.**

**This Service Bulletin is also being released as Rapid Response Transmittal (RRT) 20-012, dated February 14, 2020. All applicable Sold and Un-Sold RRT VINs have been loaded. To verify this RRT service action is applicable to the vehicle, use VIP or perform a VIN search in DealerCONNECT/Service Library. All repairs are reimbursable within the provisions of warranty.**

**SUBJECT:**

Inspect Throttle Body Assembly

**OVERVIEW:**

This bulletin involves inspecting the Julian date on the throttle body and possibly replacing it.

**MODELS:**

2019	(D2)	RAM 3500 Pickup
2019	(DD)	RAM 3500 Cab Chassis
2019	(DP)	RAM 4500/5500 Cab Chassis
2019	(DS)	RAM 1500 Pickup
2019	(DX)	RAM Truck (Mexico)
2020	(KL)	Jeep Cherokee
2020	(MP)	Jeep Compass
2019	(DJ)	RAM 2500 Pickup
2019	(LD)	Dodge Charger

**NOTE:** This bulletin applies to vehicles within the following markets/countries: North America, APAC, EMEA and LATAM.

**NOTE:** This bulletin applies to the following vehicles:

- **D2 vehicles built on or after September 06, 2019 (MDH 0906XX) on or before September 20, 2019 (MDH 0920XX) equipped with a 6.4L Heavy Duty V8 Hemi With MDS (Sales Code ESA).**
- **DD and DP vehicles built on or after September 06, 2019 (MDH 0906XX) on or before September 20, 2019 (MDH 0920XX) equipped with a 6.4L V8 Heavy Duty Hemi Engine (Sales Code ESB).**
- **DS vehicles built on or after September 06, 2019 (MDH 0906XX) on or before September 20, 2019 (MDH 0920XX) equipped with a 5.7L V8 Hemi MDS VVT Engine (Sales Code EZH).**

- DX vehicles built on or after September 06, 2019 (MDH 0906XX) on or before September 20, 2019 (MDH 0920XX) equipped with a 6.4L V8 Heavy Duty Hemi MDS Engine (Sales Code ESB) or a 5.7L V8 Hemi MDS VVT Engine (Sales Code EZC).
- DJ vehicles built on or after September 04, 2019 (MDH 0904XX) on or before September 20, 2019 (MDH 0920XX) equipped with a 6.4L Heavy Duty V8 Hemi With MDS (Sales Code ESA).
- KL and MP vehicles built on or after September 06, 2019 (MDH 0906XX) on or before September 20, 2019 (MDH 0920XX) equipped with a 2.4L I4 Zero EVAP M-AIR Engine W/ESS (Sales Codes EDE, EDD or ED6).
- LD vehicles built on or after September 06, 2019 (MDH 0906XX) on or before September 21, 2019 (MDH 0921XX) equipped with a 5.7L V8 HEMI MDS VVT Engine (Sales Code EZH).

**SYMPTOM/CONDITION:**

Customers may experience a Malfunction Indicator Lamp (MIL) illumination. Upon further investigation the technician may find that the following Diagnostic Trouble Code (DTC) has been set:

- P2100 - Electronic Throttle Control Motor Circuit/Open - Bank 1.

The customer may also describe the vehicle is in limp home mode.

**DIAGNOSIS:**

If a customer's VIN is listed in VIP or your RRT VIN list, perform the repair. **This RRT only applies to vehicles on the RRT VIN list.**

**NOTE: It may be necessary to raise/remove the engine cover or air cleaner duct in order to inspect the throttle body. Refer to the detailed service procedures available in DealerCONNECT/Service Library.**

1. **\*\*Inspect the throttle body assembly for an "S1" or "S2" (Fig. 1) .**

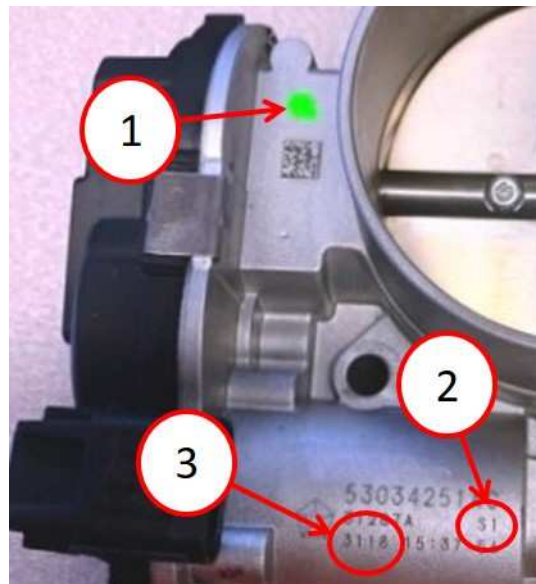


Fig. 1

Julian Date, S1 And Green Dot Locations

- 1 - Green Dot
- 2 - S1 On Stamping (Sales Codes ESA And EZH)
- 3 - Julian Date

2. Is there an **“S1” or “S2”** marked on the housing (Fig. 1) ?
  - An **“S2”** is present. This bulletin has been completed, use LOP (14-25-01-95) to close the active RRT.
  - An **“S1”** is present. Proceed to [Step 3](#) of the Diagnostic Procedure.
3. Inspect the Julian date on the throttle body assembly (Fig. 1) .
4. Referencing the figure above, is the four digit stamped Julian date on the front of the throttle body **on or between 2419 - 2549** (Fig. 1) ?
  - YES>>> Proceed to [Step 5](#) of the Diagnostic Procedure.
  - NO>>> This bulletin has been completed, use LOP (14-25-01-95) to close the active RRT.\*\*
5. Is there a **green dot near the bar code also marked on the housing** (Fig. 1) ?
  - YES>>> This bulletin has been completed, use LOP (14-25-01-95) to close the active RRT.
  - NO>>> Proceed to [Step 1](#) of the Repair Procedure.

#### **PARTS REQUIRED:**

Qty.	Part No.	Description
1 (AR)	53034251AD	Throttle Body Control <b>(D2, DD, DP, DS, DX, DJ and LD Only)</b>
1 (AR)	04891970AC	Throttle Body Control <b>(KL and MP Only)</b>
1 (AR)	04627634AA	Throttle Body Seal <b>(D2, DD, DP, DS, DX, DJ and LD Only)</b>
1 (AR)	04627591AA	Throttle Body Seal <b>(LD Only)</b>
1 (AR)	05281991AA	Throttle Body Seal <b>(KL and MP Only)</b>
1 (AR)	68359029AA	Throttle Body Seal <b>(KL and MP Only)</b>

#### **REPAIR PROCEDURE:**

**CAUTION! Ensure any Electronic Throttle Control (ETC) relearn routines have been performed after replacement of the throttle body. Failure to do so may result in the vehicle not operating correctly.**

1. Replace the throttle body assembly and seal:
  - For **DJ, D2, DD and DP vehicles**, refer to the detailed service procedures available in DealerCONNECT/Service Library under: Service Info>09 - Engine, 6.4L/Fuel Injection/Throttle Body/Removal and Installation.
  - For **DS, LD, KL and MP vehicles**, refer to the detailed service procedures available in DealerCONNECT/Service Library under: Service Info>14 - Fuel System/Fuel Injection, Gas/Throttle Body/Removal and Installation.
2. Clear any DTCs that may have been set.

**POLICY:**

Reimbursable within the provisions of the warranty.

**TIME ALLOWANCE:**

<b>Labor Operation No:</b>	<b>Description</b>	<b>Skill Category</b>	<b>Amount</b>
14-25-01-95	Throttle Body <b>(All vehicles)</b> - Inspect (2 - Skilled)	1 - Engine Repair and Performance	0.2 Hrs.
14-25-01-96	Throttle Body Assembly <b>(DX vehicles with Sales Code EZC)</b> - Inspect and Replace (2 - Skilled)	1 - Engine Repair and Performance	0.4 Hrs.
14-25-01-96	Throttle Body Assembly <b>(DD, DP and DX vehicles with Sales Code ESB)</b> - Inspect and Replace (2 - Skilled)	1 - Engine Repair and Performance	0.4 Hrs.
14-25-01-96	Throttle Body Assembly <b>(D2 and DJ vehicles with Sales Code ESA)</b> - Inspect and Replace (2 - Skilled)	1 - Engine Repair and Performance	0.4 Hrs.
14-25-01-96	Throttle Body Assembly <b>(MP vehicles with Sales Codes ED6, EDE and EDD)</b> - Inspect and Replace (2 - Skilled)	1 - Engine Repair and Performance	0.6 Hrs.
14-25-01-96	Throttle Body Assembly <b>(KL vehicles with Sales Codes EDE and EDD)</b> - Inspect and Replace (2 - Skilled)	1 - Engine Repair and Performance	0.4 Hrs.
14-25-01-96	Throttle Body Assembly <b>(DS and LD vehicles with Sales Code EZH)</b> - Inspect and Replace (2 - Skilled)	1 - Engine Repair and Performance	0.3 Hrs.

**FAILURE CODE:**

ZZ	Service Action
----	----------------