



ENTRANCE DOOR AIR NOISE DIAGNOSTIC AND REPAIR.

Bulletin Type:	INC	Publication Date:	June 2020
Bulletin #(s):	20-016	Make(s):	ENTEGR A COACH
Model Year(s):	ALL	Model(s):	CORNERSTONE, ANTHEM ASPIRE, INSIGNIA, REATTA

Incident:	Steps to find and correct air noise from or around the entrance door.
Affected Units:	All units with PTL entrance doors.

INSTRUCTIONS

Determine where the air noise is coming from and correct the problem(s).

1. Visually inspect the gap between the door flange and the frame. It needs to be equal all the way around. If it is found to vary, the frame will need to be adjusted to the door. This should be done before seals are moved, or other adjustments to the door are made.
Refer to "ENTRANCE DOOR ADJUSTMENT" document.

2. Perform a tension test, a dollar bill or piece of paper, between the door seal and frame to determine if there is proper tension of the rubber seal on the door where it contacts the metal frame around the perimeter of the door opening. If it needs more tension the move-a-bolt can be adjusted tighter, drawing the door inboard.

Test the tension of the latch at the move-a-bolt. Pulling the interior handle inboard while the vehicle is in transit will determine if the move-a-bolt needs adjusting. If air noise is eliminated while pulling the handle inboard will indicate the move-a-bolt is not in far enough to keep the door and seal tight. **NOTE:** Adjusted too far inboard will cause the door to latch hard.

Refer to "MOVE-A- BOLT ADJUSTMENT 3000 SERIES" document.

3. The rubber seal on the door may not be mounted in the proper location for the best seal of the door. A small foam tape can be added under the rubber seal to shim it tighter to the frame for a better seal. (EC Part # 0228787 Tape, Foam .37x.18, BLK + RIB W/ADH).

NOTE: The gap should be checked and frame adjusted before the seal is moved. Older rubber may need to be replaced if it cannot be removed without damage.

Rubber door seal (EC PART # 0224320 FLEX SEAL FROM PTL).

Refer to "ENTRANCE DOOR RUBBER SEAL ADJUSTMENT & REPLACEMENT" document.

4. Inspect for missing foam spray;
 - under the "A" pillar above the dash,
 - open ends of framing at the bottom of the firewall,
 - and where fiberglass cap meets the fire wall. Add expanding spray foam as needed.
5. Add foam at the top of the hinge on the frame. This foam is four inches long, one inch wide, and one sixteenth inch thick. It goes horizontally or diagonally on the top of the hinge (EC part # 0224262 HINGE SEAL #007-277; CURRENT).
6. Inspect the air lock for function and proper seating into the bevel block. Adjusting the gap around the door will be the first step in getting the air lock in the proper position for an effective seal. The wheel plate is adjustable left to right to help pull the door in tighter when it engages. When the screen door is push back you will be able to see the lock wheel in the bevel block, there should be .25-.5" showing out the bottom of the bevel block.
7. Check the window for air noise around the exterior glass for gapping that will catch wind to make noise. Filling the gap with silicone seal will help to eliminate wind noise.
8. Inspect the 45* seams at the top of the frame where the rubber seal on the door contact the frame. Sealing the gaps with a seal adhesive will stop the wind noise.
E6000 2-fl oz. Bonding Clear Multipurpose Adhesive, Item #556902 Model #237032.
Refer to "AIR NOISE; 45 SEAM AT FRONT TOP" document.
9. Inspect and seal the power wire hole under the awning over the entrance door. The awning can be extended, loosened from the wall, and hinged upward to access the wire hole for a visual inspection and seal.

Jayco's sole obligation under our limited warranty is to repair or replace defective materials and/or workmanship deemed our responsibility as determined by Jayco in our sole discretion. Jayco reserves the right to use new and/or remanufactured parts or materials of similar quality to complete any work, and to make parts and/or design changes as appropriate without notice to anyone. Jayco designs and/or materials changes are done without obligation to incorporate such changes in previously manufactured product. Jayco makes every reasonable effort to ensure field remedies will not adversely affect performance and/or safety of the unit. This field remedy is not intended to extend to future performance of this RV, or any of its materials, components or parts beyond the standard warranty period. The RV owner's obligation to notify Jayco, or one of its independent, authorized dealers, of a claimed defect does not modify any obligation placed on the RV owner to contact Jayco directly when attempting to pursue remedies under state or federal law. Jan. 2019.

903 South Main Street • P.O. Box 460 • Middlebury, IN 46540

ENTRANCE DOOR ADJUSTMENT

C: ENTRANCE DOOR HAS EXCESSIVE AIR NOISE OR DOES NOT FUNCTION CORRECTLY.

C: THE FRAME IS NOT SQUARE AND EVEN WITH THE DOOR.

C: ADJUST OR REFIT FRAME TO DOOR.

CLAMP THE DOOR IN PLACE TO KEEP IT FROM
FALLING OUT OF THE OPENING.

NOTE:

FOR PERSONNEL SAFETY AND TO PROTECT THE DOOR FROM DAMAGE
SECURE OR HOLD THE DOOR IN PLACE WHILE CAULKING, LAGS, AND
JACK SCREWS ARE BEING REMOVED AND LOOSENED.

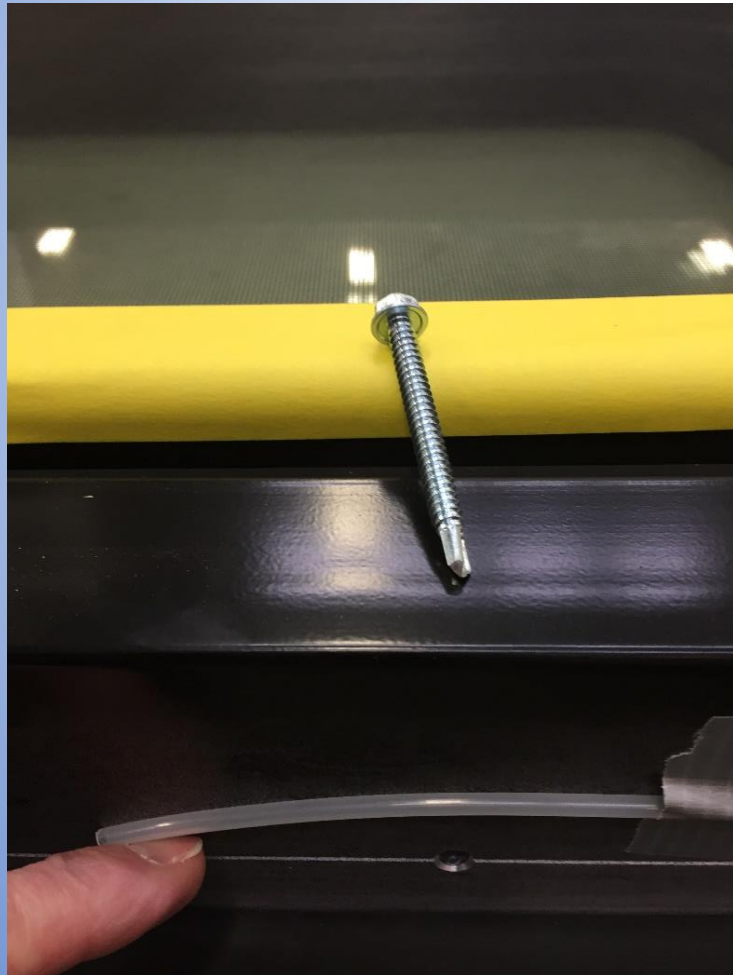
REMOVE THE WOOD TRIM FRAME FROM INTERIOR OF THE DOOR.
REMOVE ALL COMPONENTS FROM THE WOOD TRIM; FIRE EXTINGWISHER AND GRAB HANDLE.
REMOVE WOODEN PLUGS AND SCREWS HOLDING TRIM IN PLACE.



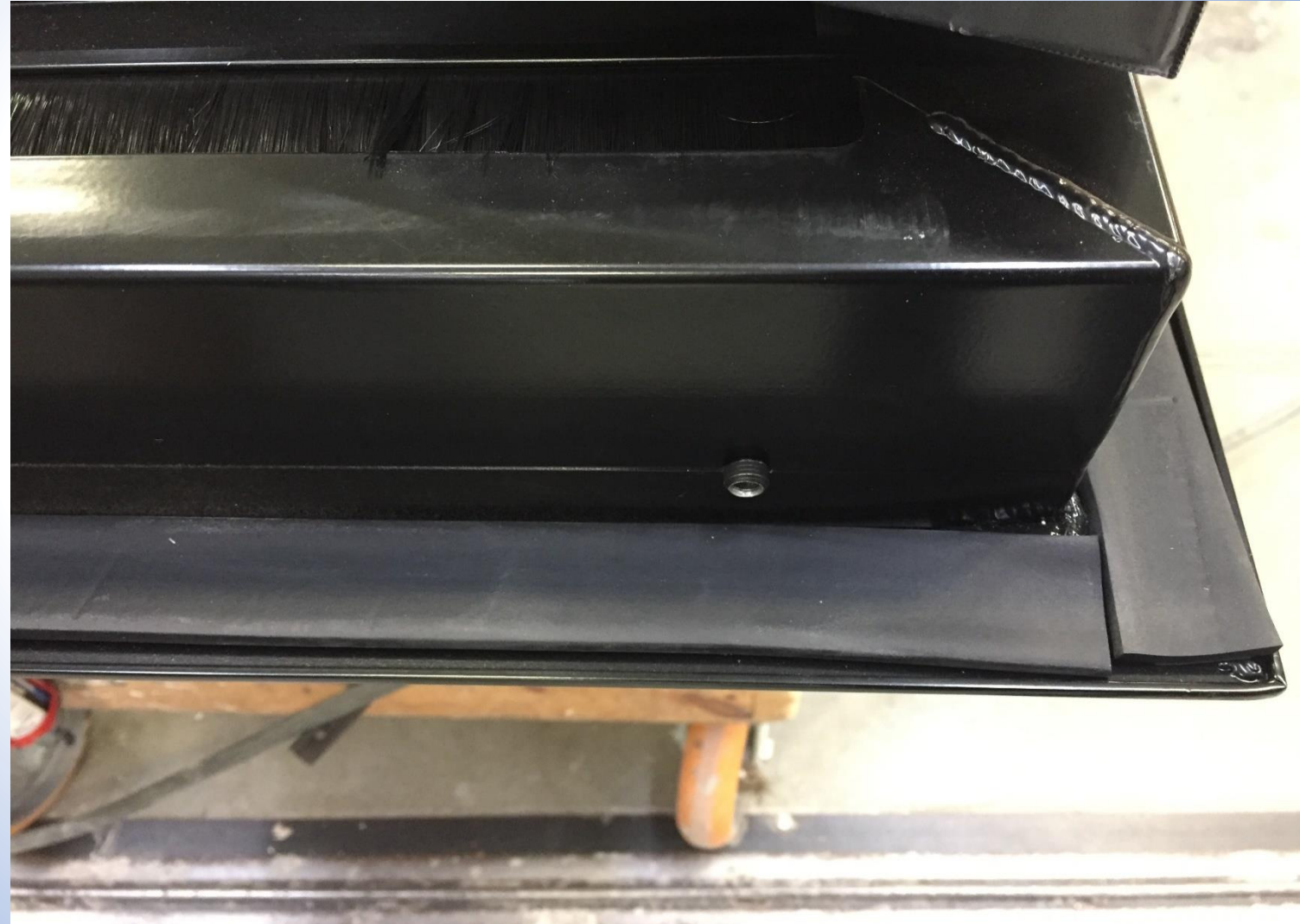
CUT THE SEALANT LOOSE ON BOTH SIDES AND TOP OF THE DOOR.



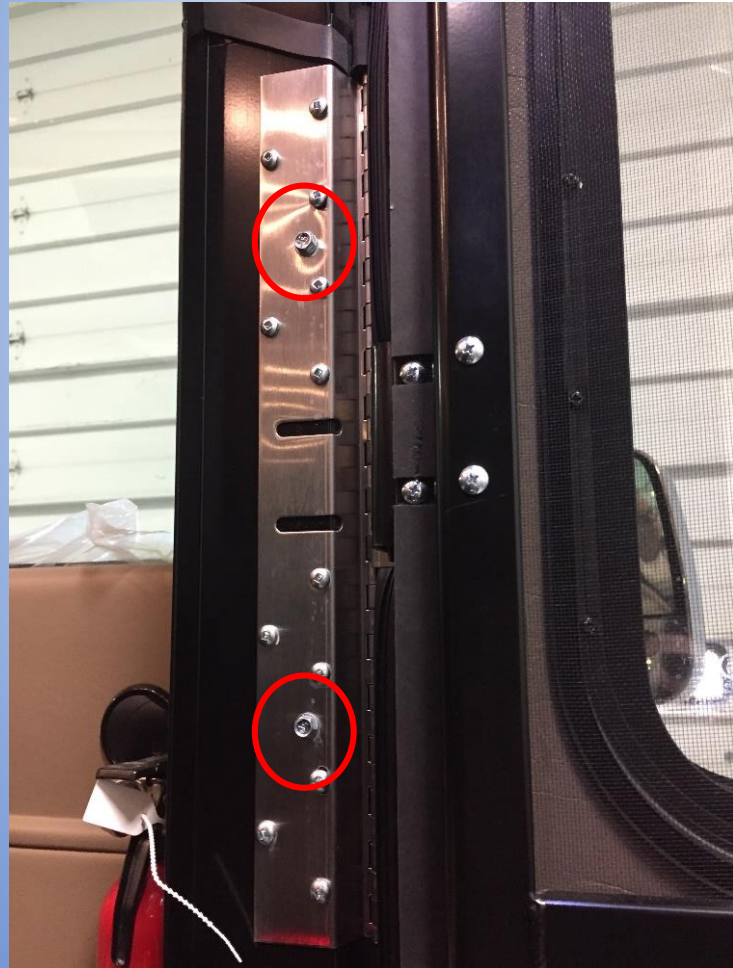
REMOVE THE LAG SCREWS OUT OF THE JACK SCREWS ON ALL SIDES EXCEPT THE FOUR IN THE HINGE.



RETRACT AND LOOSEN ALL THE JACK SCREWS IN THE DOOR FRAME WITH AN ALLEN WRENCH WHERE LAG SCREW WAS REMOVED.



THE 4 LAGS MAY NEED TO BE REMOVED FROM THE HINGE IF THE WHOLE DOOR NEEDS TO BE RAISED OFF THE SILL.



ADJUST AND RE-SECURE THE ENTRANCE DOOR

1.

WITH THE DOOR IN THE OPENING AND THE HINGED SIDE AGAINST THE A-PILLAR, INSTALL TWO SETS OF 2- #14X2" SELF DRILLING AND TAPPING SCREWS THROUGH THE TWO HOLES IN EACH HINGE. MAKE SURE THE HINGE SIDE OF THE OPENING IS PERPENDICULAR TO THE FLOOR AND THE OPENING IS SQUARE.

ADJUST AND RE-SECURE THE ENTRANCE DOOR (CONT.)

2.

ADJUST THE REMAINING JACK SCREWS LOCATED AROUND THE THREE SIDES OF THE PERIMETER OF THE DOOR UNTIL THE DOOR AND THE JAMB HAVE EQUAL SPACING AND THE DOOR IS FLUSH IN THE JAMB (**DO NOT PUSH THE UPPER OR LOWER CORNERS OF THE JAMB IN FLUSH WITH THE COACH WALL UNLESS YOU ARE CERTAIN THE WALL IS PERFECTLY FLAT**) INSERT THE #12X2" SELF DRILLING AND TAPPING SCREWS THROUGH THE JACK SCREWS TO SECURE THE DOOR TO THE REMAINING THREE SIDES.(IT IS CRITICAL THAT THE SPACING BETWEEN THE DOOR TRIM AND THE JAMB IS CONSISTENT BEFORE ANCHORING THE DOOR).

ADJUST AND RE-SECURE THE ENTRANCE DOOR (CONT.)

3.

ADDITIONAL ADJUSTMENT TO THE RUBBER SEAL OF THE DOOR MAY BE MADE BY MOVING THE RUBBER DOOR SEAL OUTBOARD TOWARDS THE JAMB OR INBOARD TOWARDS THE DOOR DEPENDING ON HOW TIGHT THE SEAL IS. YOU CAN DETERMINE THIS BY SLIPPING A PIECE OF PAPER BEHIND THE SEAL AND CLOSING THE DOOR TO SEE IF IT CAN BE REMOVED AND HOW MUCH FORCE IS REQUIRED TO PULL IT THROUGH. (IT SHOULD BE TIGHT ENOUGH THAT IN ORDER TO PULL THE PAPER FROM BETWEEN THE DOOR AND THE JAMB SIGNIFICANT PRESSURE IS REQUIRED).

ADJUST AND RE-SECURE THE ENTRANCE DOOR (CONT.)

4.

AFTER YOU ARE CERTAIN THE DOOR IS MOUNTED PROPERLY AND THE DOOR IS FLUSH AND SQUARE IN THE COACH OPENING YOU MAY THEN PROCEED TO TAP THE OUTER FLANGE OF THE JAMB DOWN AGAINST THE COACH WALL USING A RUBBER Mallet AND A NYLON BLOCK.

NOTE:

BEING CAREFUL WHILE TAPPING THE OUTER FLANGE AT THE WINDSHIELD "A" PILLAR AREA NOT TO CRACK THE WINDSHEILD.

ADJUST AND RE-SECURE THE ENTRANCE DOOR (CONT.)

5.

CLOSE THE DOOR TO DETERMINE WHETHER OR NOT THE STRIKER BOLT IS ADJUSTED PROPERLY. IF THE DOOR CLOSES AND LATCHES CORRECTLY INTO THE PRIMARY AND SECONDARY LATCH THAN NO FURTHER ADJUSTMENT IS REQUIRED. IF THE DOOR DOES NOT SEAL WELL OR THE LATCH WILL NOT ENGAGE THAN THE STRIKER BOLT MAY HAVE TO BE ADJUSTED. IN ORDER TO MAKE THIS ADJUSTMENT THE STRIKER BOLT CAN BE ADJUSTED BY RE-POSITIONING THE STRIKER BOLT (SEE MOVE-A-BOLT ADJUSTMENT INSTRUCTIONS).

ADJUST AND RE-SECURE THE ENTRANCE DOOR (CONT.)

6.

FURTHER ADJUSTMENTS CAN BE MADE TO THE SCREEN DOOR BY LOOSENING THE EIGHT SCREWS THAT HOLD THE SCREEN DOOR TO THE HINGE AND MANIPULATING THE SCREEN DOOR AS NECESSARY. THE SCREEN DOOR CATCH ALSO HAS MINIMAL ADJUSTMENT IN THE CATCH ITSELF BY LOOSENING THE SCREWS AND MOVING THE LATCH ASSEMBLY (SEE SCREEN DOOR ADJUSTMENT INSTRUCTIONS).

SEAL THE OUTER FLANGE TO THE BODY OF THE COACH.

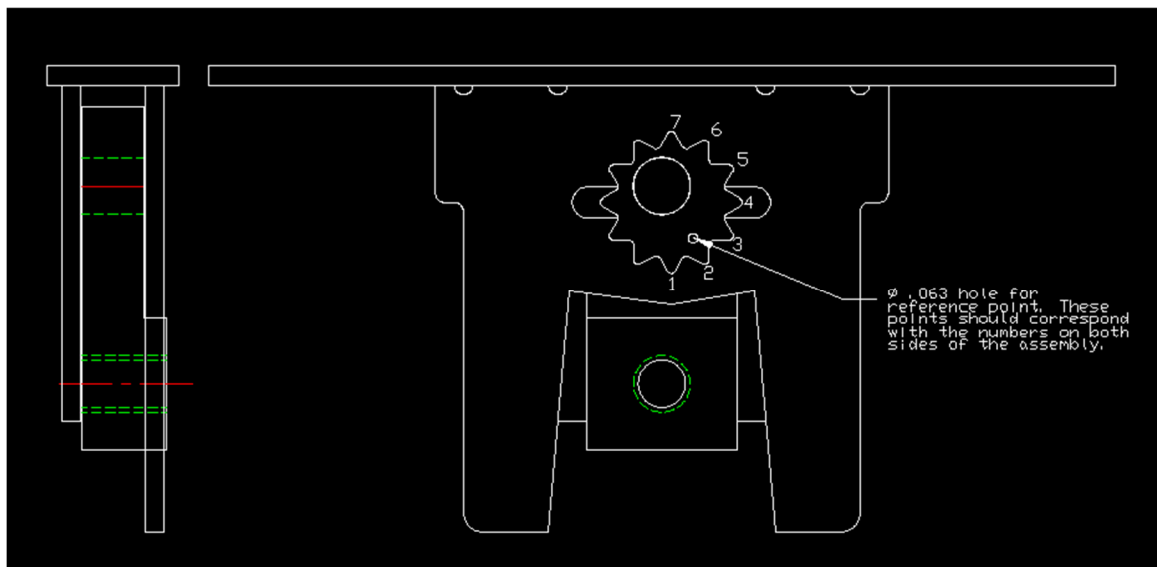




3000 series

Move-a-bolt Adjustment

1. Remove the mov-a-bolt cover from the jamb.
2. Remove the strike bolt then the six screws holding the mov-a-bolt assembly to the jamb.
3. Remove move-a-bolt assembly from the jamb to adjust.
4. Look at the reference hole position to determine which way to adjust the star cam.
5. Remove pin, rotate star cam to the desired location, the lower the number position pulls the door in tighter, the higher the number position makes the door looser on the seal, reinstall pin.
6. Reinstall the mov-a-bolt assembly in the jamb and test the door operation, remove and readjust as necessary, reinstall mov-a-bolt cover.



Note: If you have any questions concerning the installation procedures please contact PTL Engineering 810.664.2310

ENTRANCE DOOR RUBBER SEAL ADJUSTMENT & REPLACEMENT

INSTRUCTIONS

The rubber seal on the door may not be mounted in the proper location for the best seal of the door and may need to be repositioned outward.

NOTE:

- The gap should be checked and frame adjusted before the seal is moved.
 - Older rubber may need to be replaced if it cannot be removed without damage.
- Rubber door flex seal (EC PART #0224320 FLEX SEAL FROM PTL).



If more pressure is needed for a better seal, a flat foam seal (EC part # 0228787 Tape, Foam, .37x.18, BLK + RIB W/ADH) can be added under the main rubber seal to shim it out to the bevel surface of the door's frame.



As shown in figure 2 the flat foam can be installed behind the flap of the rubber flex seal. Using a plastic blade pull the flap aside to insert the flat foam under the rubber onto the door.

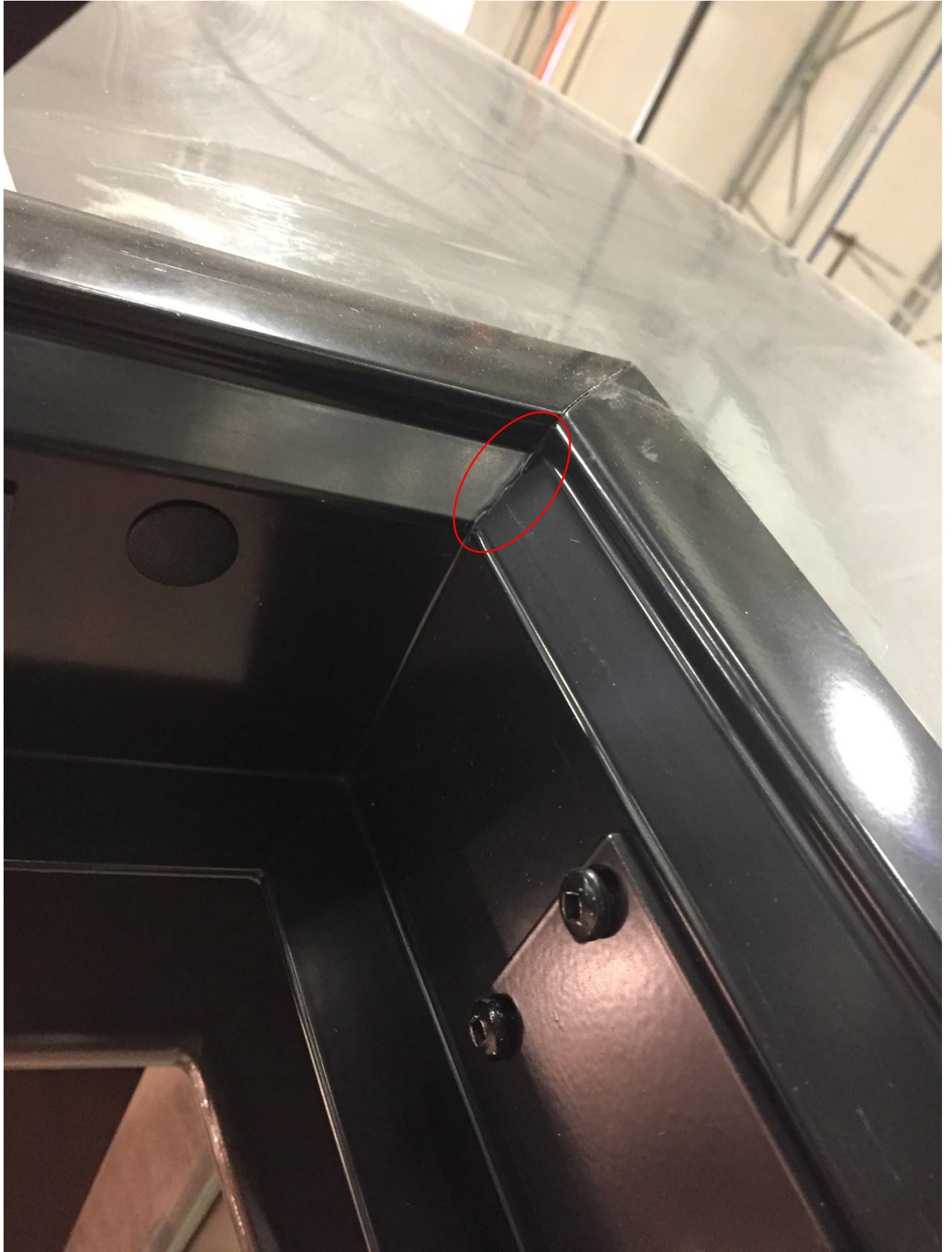
Jayco's sole obligation under our limited warranty is to repair or replace defective materials and/or workmanship deemed our responsibility as determined by Jayco in our sole discretion. Jayco reserves the right to use new and/or remanufactured parts or materials of similar quality to complete any work, and to make parts and/or design changes as appropriate without notice to anyone. Jayco designs and/or materials changes are done without obligation to incorporate such changes in previously manufactured product. Jayco makes every reasonable effort to ensure field remedies will not adversely affect performance and/or safety of the unit. This field remedy is not intended to extend to future performance of this RV, or any of its materials, components or parts beyond the standard warranty period. The RV owner's obligation to notify Jayco, or one of its independent, authorized dealers, of a claimed defect does not modify any obligation placed on the RV owner to contact Jayco directly when attempting to pursue remedies under state or federal law. Jan. 2019.

903 South Main Street • P.O. Box 460 • Middlebury, IN 46540

AIR NOISE; 45* SEAM AT FRONT TOP:

There are seams welded from the inside at the top of the door that may leak from lack of weld (back side). PTL recommends E6000 black sealant or something similar to seal them on the front side to seal and stop the air noise.







E6000 2-fl oz Bonding Clear Multipurpose Adhesive

Item #556902 Model #237032

- Industrial strength, general purpose adhesive that's ideal for bonding wood, fabric, leather, ceramic, glass, metal and more
- Temperature-resistant and remains flexible, even in extreme conditions
- Waterproof and bond remains secure even when exposed to water

