



**UPS Ford F59 Package Truck
Cold Start Concern
ENP-738
May 27, 2020**

1. Introduction

The Agility service team has identified certain Package Trucks built on the Ford F59 chassis, powered by the Ford V10 with Agility CNG system, that may exhibit a no start condition as well as a rough idle on cold start due to a grounding issue at the FMM and a software upgrade that is needed.

1.1 Warning Messages Used in this Bulletin

⚠ CAUTION

Damage to equipment, engine, fuel system or vehicle is possible if instructions are not followed.

NOTICE

Best practices or hints to help an operation or procedure go smoothly.

2. Affected Units

84 Ford F59 Package trucks located in Southern California Facilities

3. Tools and Materials

Description	
12 mm Socket	Ratchet
Star washer x2	MyCalibrator and cable

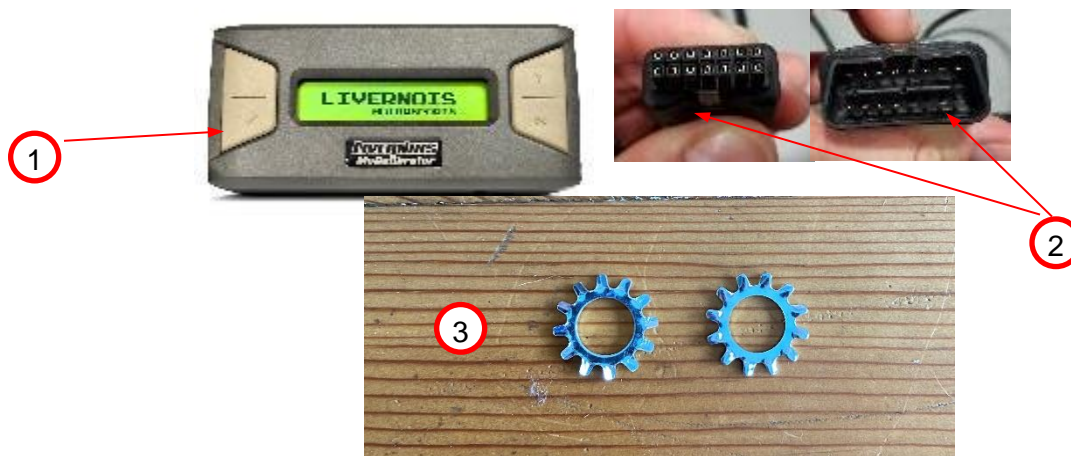


Figure 1: MyCalibrator (1), Data Link Cable (2), Star washers for FMM (3).

4. Corrective Action / Procedure

For those units affected, star washers will be added to the Fuel Management Module (FMM) and a reprogram/reflash to the Ford PCM needs to be installed.

⚠ CAUTION

Observe all safety measures for CNG vehicle repair including all facility requirements.

⚠ CAUTION

- Park vehicle, set parking brake, remove ignition key, and secure vehicle tires with wheel chocks.

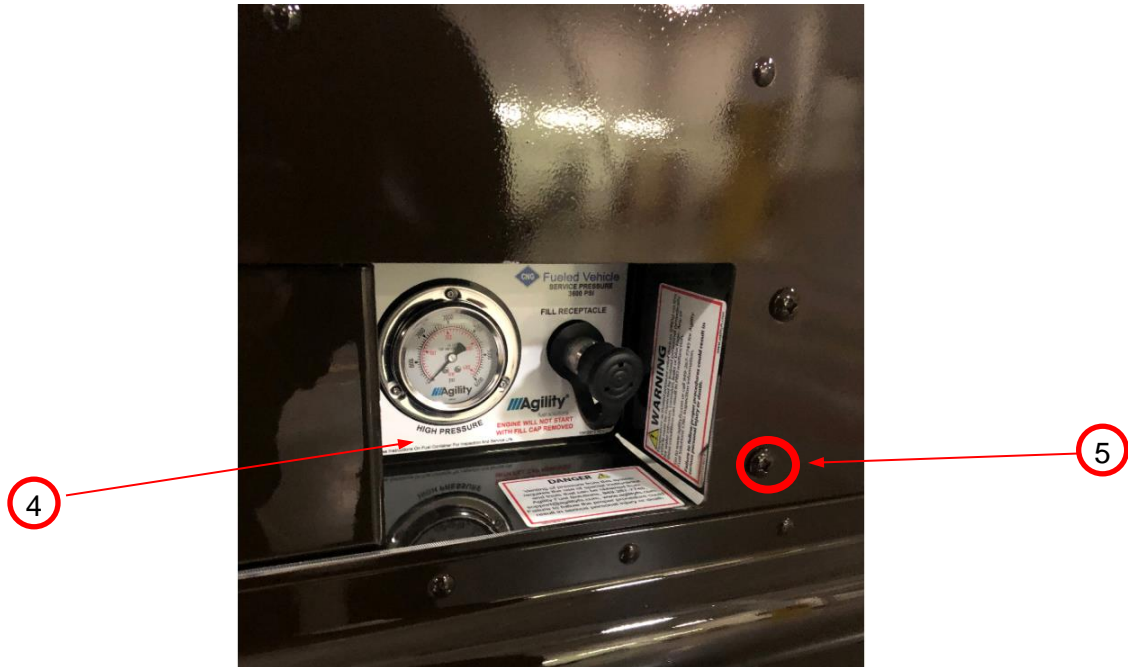


Figure 2: FMM (4), FMM Bolt to remove for star washer installation (5).

1. Locate the FMM bolt (5) located on the bottom towards the rear of the FMM (4).

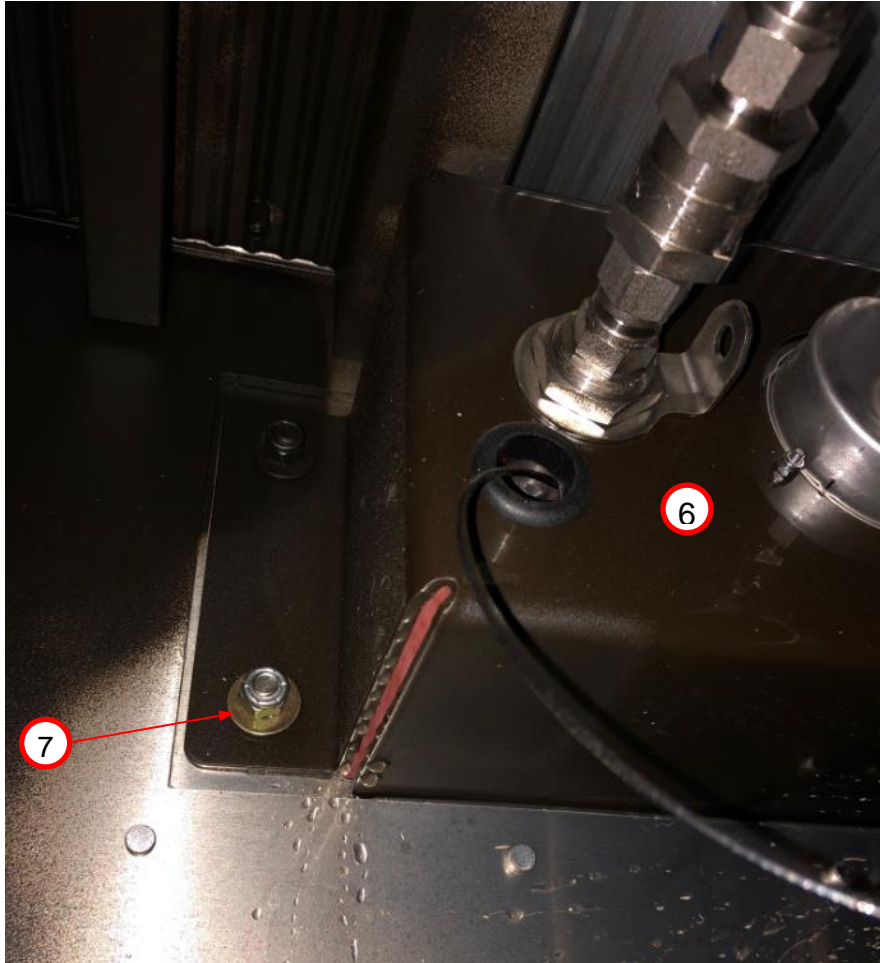


Figure 3 Rear of FMM (6), Nut to remove for star washer installation (7)

2. Remove nut (7) on the backside of the FMM and pull bolt out completely.



Figure 4: Star washer installed (8)

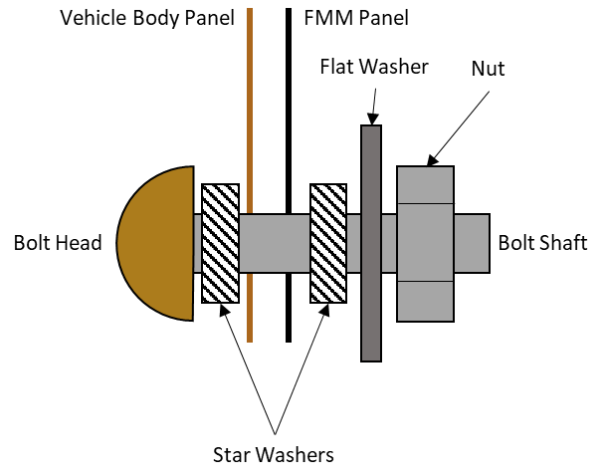


Figure 5: Diagram of star washer location

3. Install one of the star washers between bolt head and vehicle body. Reinstall bolt and install the second star washer on backside of FMM (8)



Figure 5: Flat washer and nut reinstalled (9)

4. Reinstall flat washer and nut as shown (9) and tighten.



Figure 6: Steering column (10), Data Link Connector (DLC) (11).

5. Move to inside of the cab and locate the DLC (11) to the left of the steering column (10).

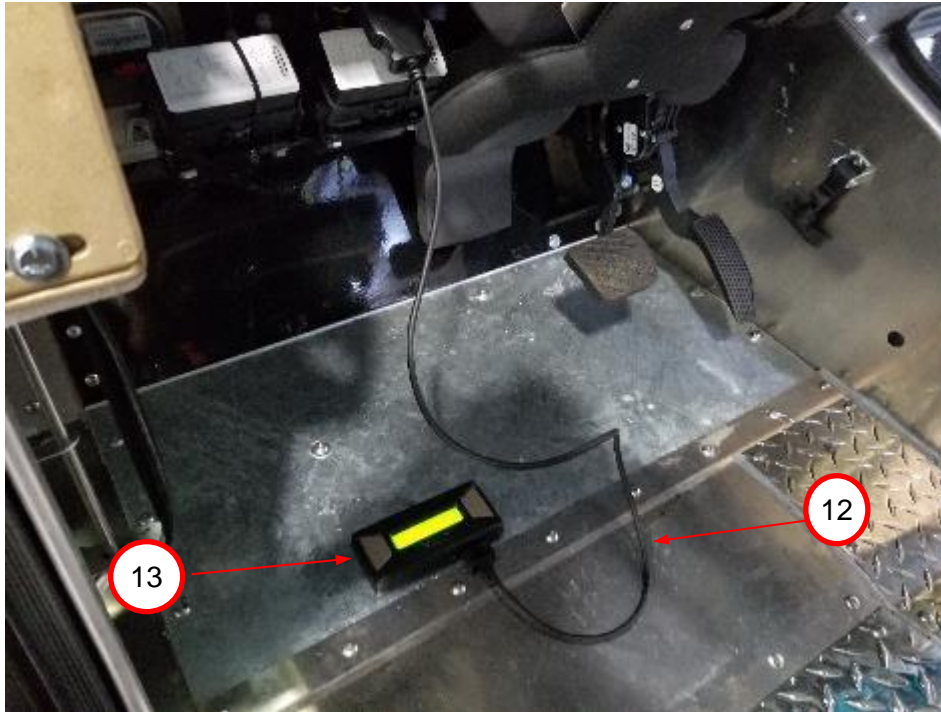


Figure 7: DLC cable (12), MyCalibrator (13)

6. Connect DLC cable (12) to MyCalibrator tool (13) and connect to DLC. Turn the key until the accessories turn on (you should hear a beep and see lights turn on), then press the "Y" button (top right)



14

Figure 8: MyCalibrator reading DTCs (14), MyCalibrator writing data to PCM (15).

15

7. MyCalibrator will now look for fault codes and DTCs, if any are present press the button to clear DTCs
8. MyCalibrator will ask to enter programmer mode, press "Y". Tuner will ask to install custom tune, press "Y". This will start the read/install process, do not unplug the tuner or interrupt ignition voltage during this process.



Figure 9: Software installation complete.

9. After calibration is installed, MyCalibrator will ask to turn the key off for 30s. Turn the vehicle off. After 30s countdown is complete, follow the tuner instructions to press "Y".

10. After installation notice appears on MyCalibrator start unit to make sure vehicle will start normally. After verifying correct operation remove MyCalibrator and DLC cable.



Figure 10: Package car unit number

11. Write down the vehicle number and ensure that supervisor has a copy of all vehicle numbers that have been flashed.