

FLA COE
 FLB COE
 FLD Conventional
 Business Class
 FLC 112 Conventional

Century Class Conventional
 Argosy
 Cargo
 Columbia
 122SD and Coronado

Business Class M2
 Cascadia
 108SD/114SD
 > New Cascadia

General Information

The area of the floor mat near the throttle pedal is more prone to wear. To extend the life of a floor mat, a wear pad can be installed on it near the throttle and brake pedal area.

Parts

Part Number	Description	Quantity
18-34070-000	Pad-Rub, Accelerator	1
23-12228-500	Nut-Push On, 1/2",SPR,STL,ZN	4

Table 1, Parts Required

Procedure

Wear Pad Installation With Reference to the Throttle Pedal Position

1. Park the vehicle on a level surface, shut down the engine, and set the parking brake. Chock the tires.
2. Follow the below instructions to position the wear pad on the floor mat.
 - See [Fig. 1](#) to determine the distance between top edge of the wear pad to the closest edge of the throttle pedal.

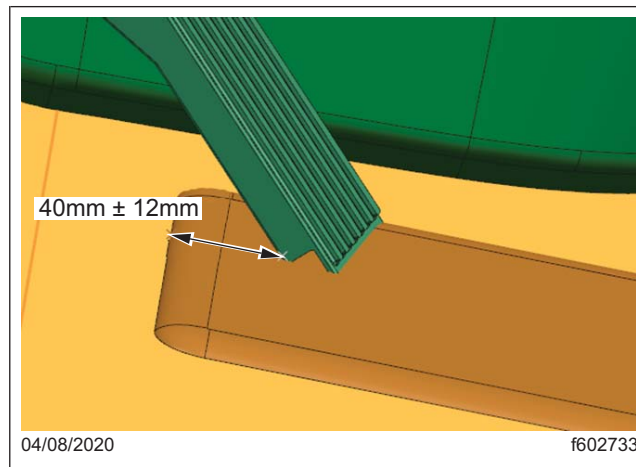


Fig. 1, Distance Between the Top Edge of Wear Pad to the Closest Edge of the Throttle Pedal

- For left hand drive (LHD) vehicles, see [Fig. 2](#) to determine the distance between the right hand side of the wear pad to the right hand side of the throttle pedal.

Freightliner Service Bulletin

FLA COE
FLB COE
FLD Conventional
Business Class
FLC 112 Conventional

Century Class Conventional
Argosy
Cargo
Columbia
122SD and Coronado

Business Class M2
Cascadia
108SD/114SD
> New Cascadia

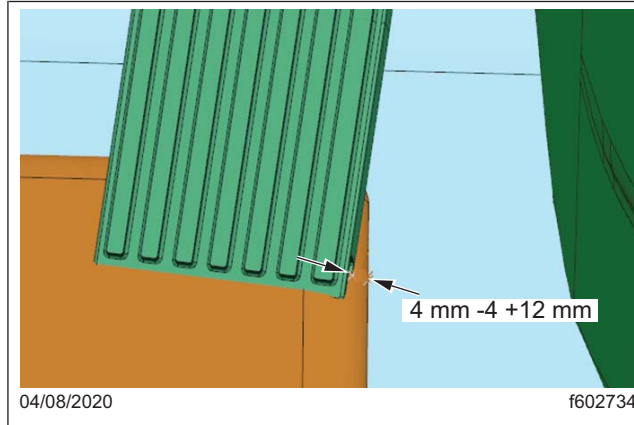


Fig. 2, Distance Between the Right Hand Side of Wear Pad to the Right Hand Side of the Throttle Pedal, LHD Vehicles

- For right hand drive (RHD) vehicles, see **Fig. 3** to determine the distance between the right hand side of the wear pad to the right hand side of the throttle pedal.

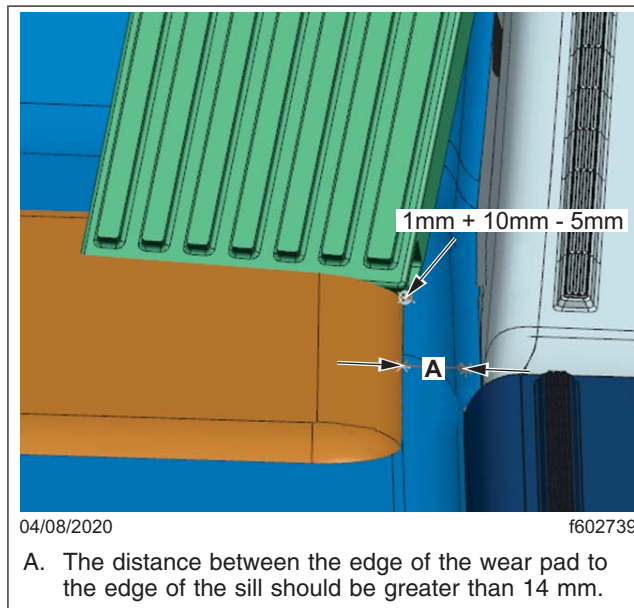


Fig. 3, Distance Between the Right Hand Side of Wear Pad to the Right Hand Side of the Throttle Pedal, RHD Vehicles

3. With the wear pad positioned within the given dimensions, mark the center points of four wear pad push nuts on the floor mat.

FLA COE
FLB COE
FLD Conventional
Business Class
FLC 112 Conventional

Century Class Conventional
Argosy
Cargo
Columbia
122SD and Coronado

Business Class M2
Cascadia
108SD/114SD
> New Cascadia

**Freightliner
Service Bulletin**

4. To flip the floor mat for wear pad installation, follow the instructions below.
 - 4.1 On each side of the vehicle, remove the lower dash cover. Refer to **Section 60.06** of the *New Cascadia™ Workshop Manual* for instructions.
 - 4.2 On each side of the vehicle, remove the kick panel.
 - 4.3 Remove the lower center console, and center console mounting bracket from the vehicle.
 - 4.4 Remove the sSAM.
 - 4.5 Remove the driver's seat. Refer to **Section 91.00** of the *New Cascadia Workshop Manual* for instructions.
 - 4.6 With the wires connected, detach the cab load disconnect switch (CLDS) by removing the fasteners that attach the CLDS to the cab.
 - 4.7 Flip the floor mat to gain enough access for wear pad installation.
5. Drill four holes of 20 mm each through the marked points on the floor mat as shown in **Fig. 4**.

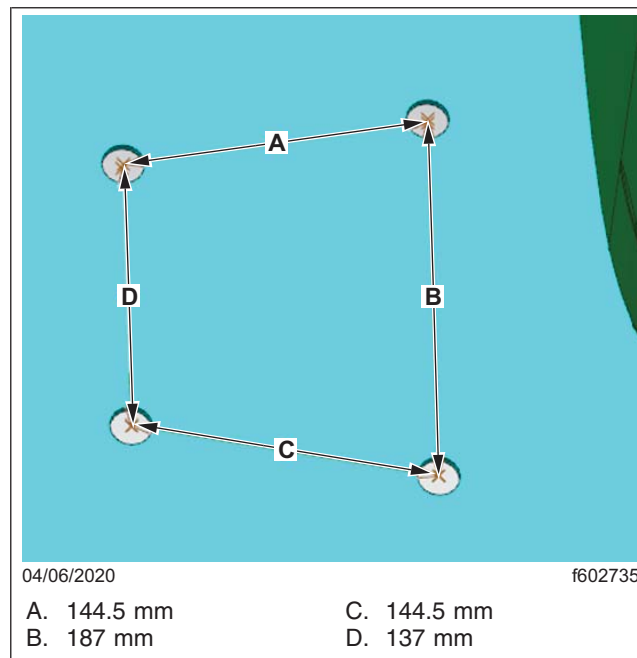


Fig. 4, Push Nut Hole Dimensions

6. At the backside of marked points on the floor mat, cut and remove the foam material to create 55 mm diameter as shown in **Fig. 5**.

**Freightliner
Service Bulletin**

 FLA COE
 FLB COE
 FLD Conventional
 Business Class
 FLC 112 Conventional

 Century Class Conventional
 Argosy
 Cargo
 Columbia
 122SD and Coronado

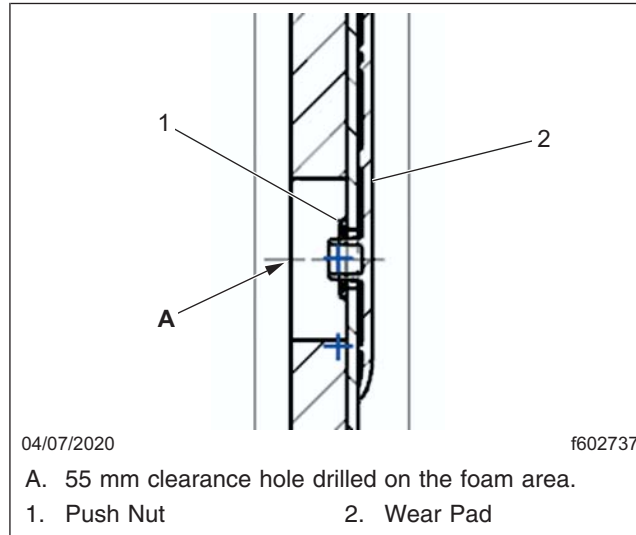
 Business Class M2
 Cascadia
 108SD/114SD
 > New Cascadia


Fig. 5, Cross Sectional View of Wear Pad Push Nut Fit into the Floor Mat Hole

7. To install the wear pad, place it on the upper side of the floor mat, and push fit the four push nuts through the four holes that are drilled on the floor mat.
8. To install the floor mat, follow the instructions below.
 - 8.1 With the wear pad installed, position the floor mat on the cab floor.
 - 8.2 Attach the CLDS to the cab.
 - 8.3 Install the driver's seat. Refer to **Section 91.00** of the *New Cascadia Workshop Manual* for instructions.
 - 8.4 Install the sSAM.
 - 8.5 Install the lower center console, and center console mounting bracket on the vehicle.
 - 8.6 On each side of the vehicle, install the kick panel.
 - 8.7 On each side of the vehicle, install the lower dash cover. Refer to **Section 60.06** of the *New Cascadia Workshop Manual* for instructions.

WARNING

An incorrectly installed wear pad can obstruct the movement of the throttle pedal, or arrest the throttle pedal to a certain position, which may cause accidents that could result in severe personal injury or death.

9. To verify free movement of the throttle pedal, depress the throttle pedal to full play and release it. Continue the cycle a few more times.

Wear Pad Installation With Reference to Floor Mat Dimension

1. Park the vehicle on a level surface, shut down the engine, and set the parking brake. Chock the tires.

FLA COE
FLB COE
FLD Conventional
Business Class
FLC 112 Conventional

Century Class Conventional
Argosy
Cargo
Columbia
122SD and Coronado

Business Class M2
Cascadia
108SD/114SD
> New Cascadia

**Freightliner
Service Bulletin**

2. To flip the floor mat for wear pad installation, follow the instructions below.
 - 2.1 On each side of the vehicle, remove the lower dash cover. Refer to **Section 60.06** of the *New Cascadia Workshop Manual* for instructions.
 - 2.2 On each side of the vehicle, remove the kick panel.
 - 2.3 Remove the lower center console, and center console mounting bracket from the vehicle.
 - 2.4 Remove the sSAM.
 - 2.5 Remove the driver's seat. Refer to **Section 91.00** of the *New Cascadia Workshop Manual* for instructions.
 - 2.6 With the wires connected, detach the cab load disconnect switch (CLDS) by removing the fasteners that attach the CLDS to the cab.
 - 2.7 Flip the floor mat to gain enough access for wear pad installation.
3. For LHD vehicles, drill four holes of 20 mm each through the floor mat with accordance to the dimensions shown in **Fig. 6** .

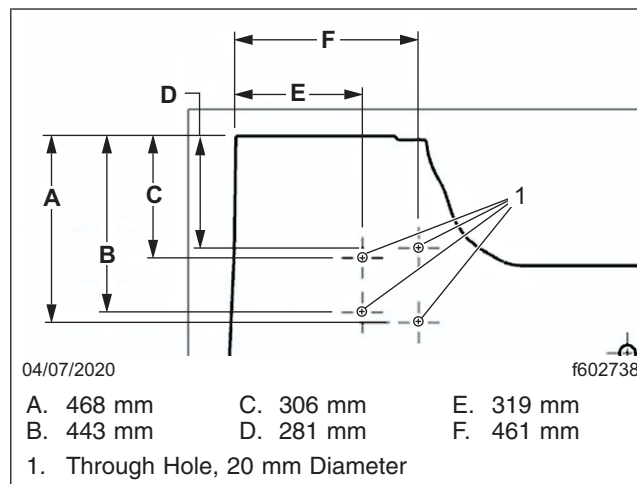


Fig. 6, Push Nut Hole Dimensions, LHD Vehicles

4. For RHD vehicles, drill four holes of 20 mm each through the floor mat with accordance to the dimensions shown in **Fig. 7** .

Freightliner Service Bulletin

FLA COE
FLB COE
FLD Conventional
Business Class
FLC 112 Conventional

Century Class Conventional
Argosy
Cargo
Columbia
122SD and Coronado

Business Class M2
Cascadia
108SD/114SD
> New Cascadia

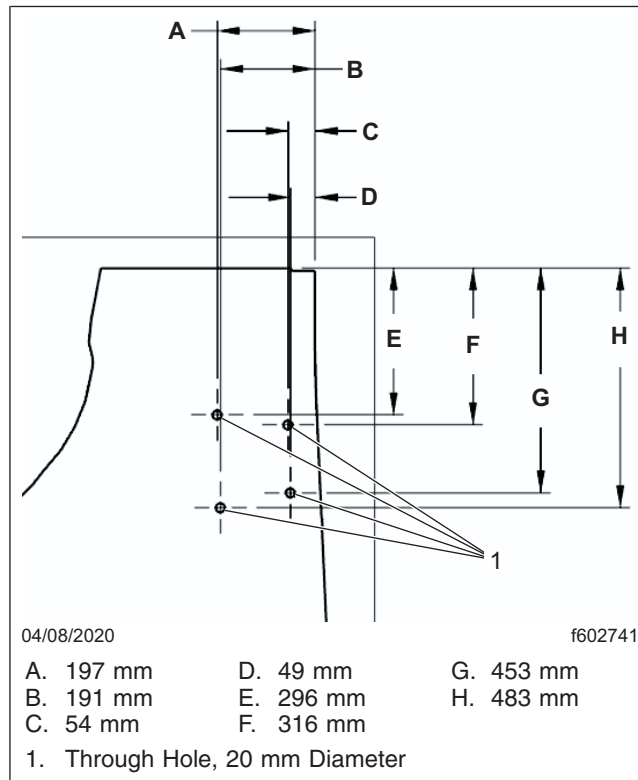


Fig. 7, Push Nut Hole Dimensions, RHD Vehicles

5. At the backside of the marked points on the floor mat, cut and remove the foam material to create 55 mm diameter. See [Fig. 5](#).
6. To install the wear pad, place it on the upper side of the floor mat, and push the four push nuts through the four holes that are drilled on the floor mat.
7. To install the floor mat, follow the instructions below.
 - 7.1 With the wear pad installed, position the floor mat on the cab floor.
 - 7.2 Attach the CLDS to the cab.
 - 7.3 Install the driver's seat. Refer to **Section 91.00** of the *New Cascadia Workshop Manual* for instructions.
 - 7.4 Install the sSAM.
 - 7.5 Install the lower center console, and center console mounting bracket on the vehicle.
 - 7.6 On each side of the vehicle, install the kick panel.
 - 7.7 On each side of the vehicle, install the lower dash cover. Refer to **Section 60.06** of the *New Cascadia Workshop Manual* for instructions.

FLA COE
FLB COE
FLD Conventional
Business Class
FLC 112 Conventional

Century Class Conventional
Argosy
Cargo
Columbia
122SD and Coronado

Business Class M2
Cascadia
108SD/114SD
> New Cascadia

**Freightliner
Service Bulletin**

WARNING

An incorrectly installed wear pad can obstruct the movement of the throttle pedal, or arrest the throttle pedal to a certain position, which may cause accidents that could result in severe personal injury or death.

8. To verify free movement of the throttle pedal, depress the throttle pedal to full play and release it. Continue the cycle a few more times.

Warranty

This is an informational bulletin only. Warranty does not apply.