



SERVICE BULLETIN

Classification:

BT18-008a

Reference:

NTB18-042a

Date:

May 4, 2020

2018-2020 LEAF; FRONT DOOR WILL NOT OPEN

<p>This bulletin has been amended. See AMENDMENT HISTORY on the last page. Please discard previous versions of this bulletin.</p>
--

APPLIED VEHICLES: 2018-2020 LEAF (ZE1)

IF YOU CONFIRM

One or both front doors of an **APPLIED VEHICLE** will not open with the inside and/or outside door handle,

AND

The door handles, cables, and latch are in good working order,

AND

There is no damage to the door.

ACTION

Inspect, and adjust as necessary, the gap between the lever on the latch and the tab of the stiffener.

- Refer to **SERVICE PROCEDURE** on page 2.

CAUTION: Do not bend the stiffener tab up or down only to adjust the gap. Follow the steps in this bulletin for proper adjustment.

IMPORTANT: The purpose of ACTION (above) is to give you a quick idea of the work you will be performing. You **MUST** closely follow the entire **SERVICE PROCEDURE** as it contains information that is essential to successfully complete this repair.

<p>Nissan Bulletins are intended for use by qualified technicians, not 'do-it-yourselfers'. Qualified technicians are properly trained individuals who have the equipment, tools, safety instruction, and know-how to do a job properly and safely. NOTE: If you believe that a described condition may apply to a particular vehicle, DO NOT assume that it does. See your Nissan dealer to determine if this applies to your vehicle.</p>

SERVICE PROCEDURE

Inspection/Adjustment: Latch Lever-to-Stiffener Tab Gap

1. Remove the front door finisher of the affected door.
 - Refer to the Electronic Service Manual (ESM), section **BODY INTERIOR > INTERIOR > REMOVAL AND INSTALLATION > FRONT DOOR FINISHER** for front door finisher removal.
- NOTE:** It may be intermittent that the door will not open. Attempt to open the door multiple times with both handles. If the door does not open normally, follow normal repair procedures for consequential damage during front door finisher removal.
2. Connect the power window switch, and then close (roll up) the door glass.
 3. Access the tab stiffener and door latch lever.
 - Refer to Figure 1 below, and Figure 2 on the next page.

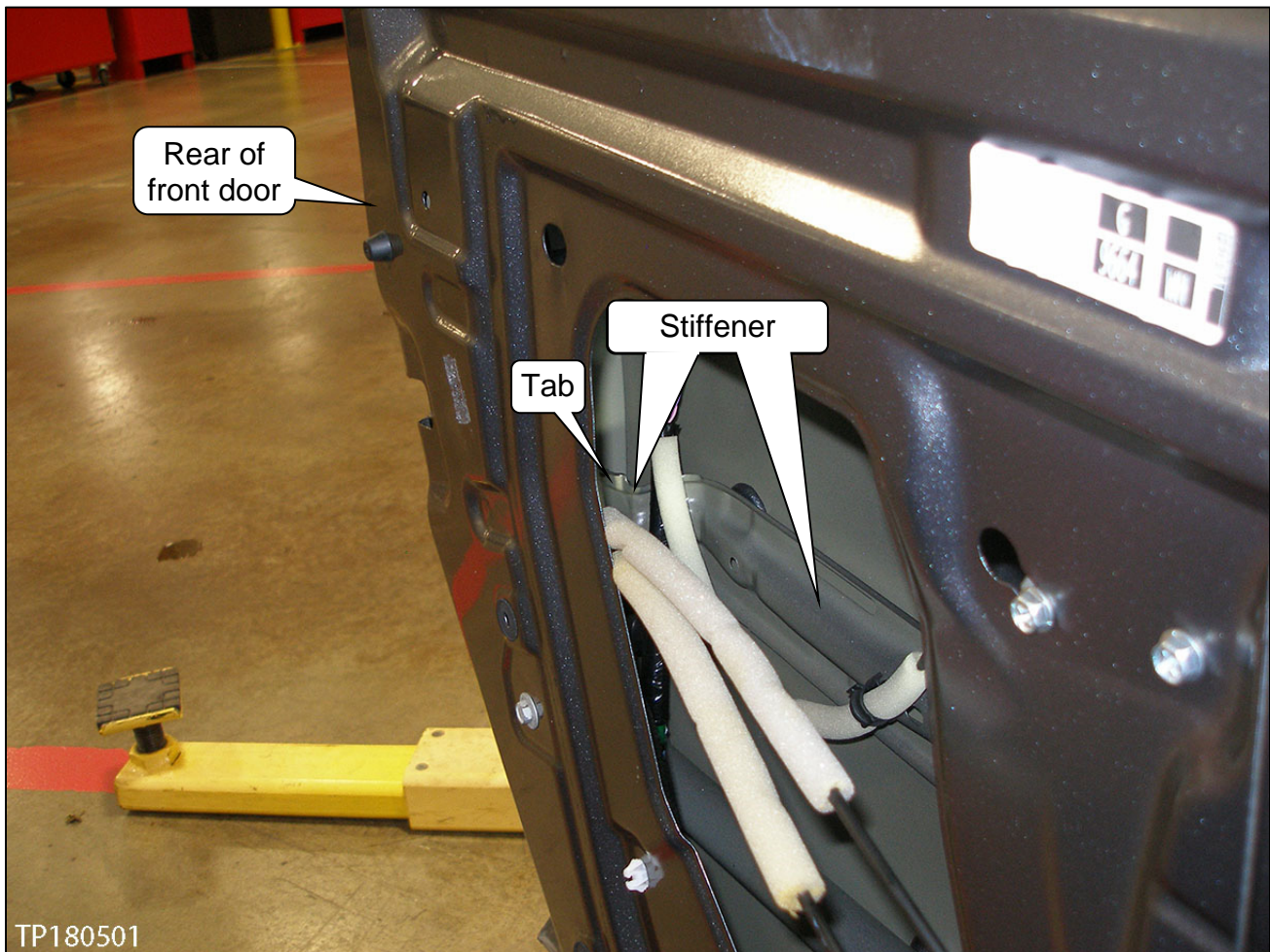


Figure 1

4. Move the lever on the door latch until it is level with the stiffener tab.

- Move the lever by raising the outside door handle.

NOTE: The door latch is hidden behind the door glass rubber run.

5. With the lever and stiffener tab still level with each other, inspect the gap between the latch lever and stiffener tab.

- Lever-to-door stiffener gap:

Minimum 3 mm (0.118 inch), maximum 5 mm (0.197 inch)

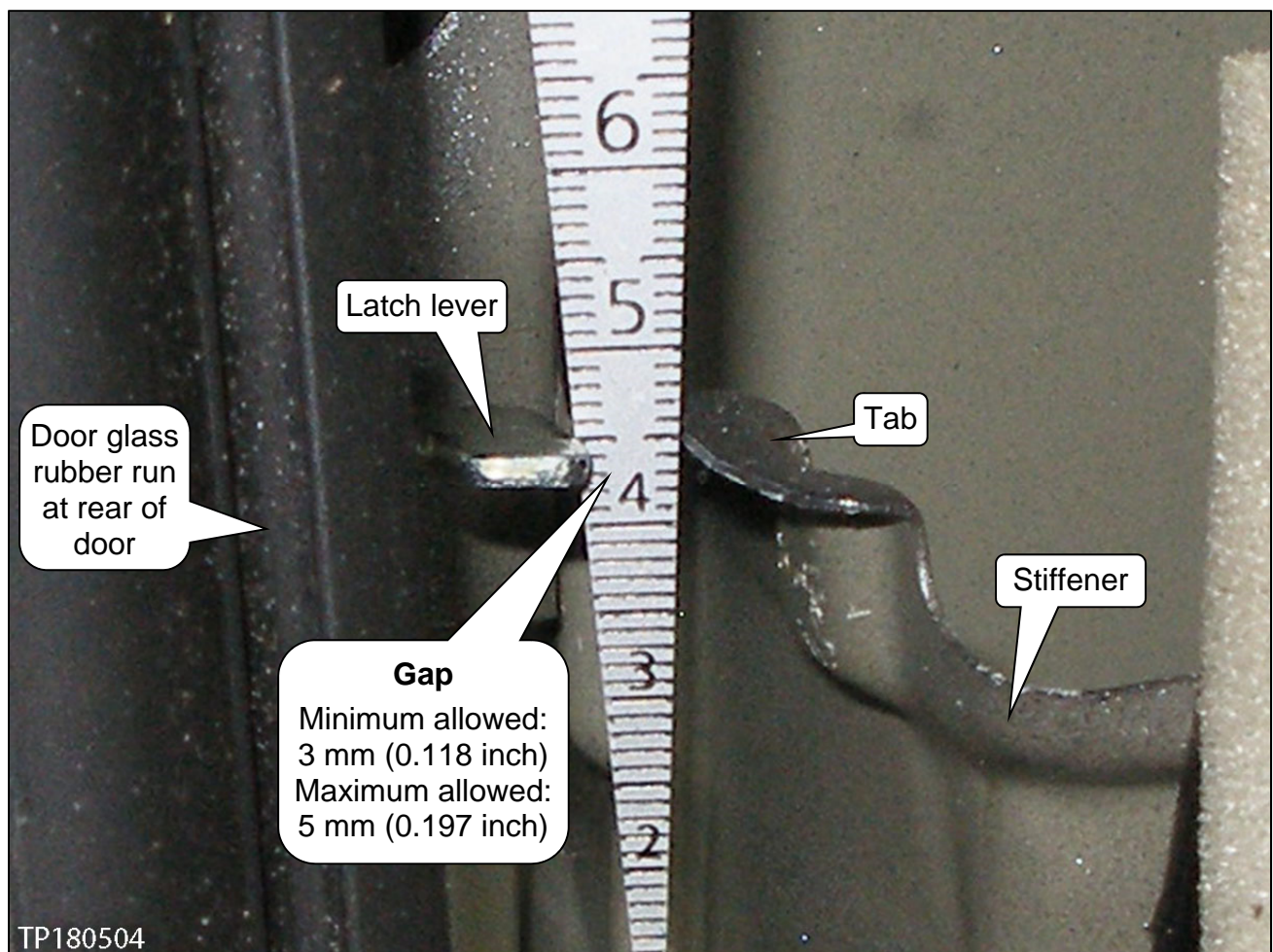


Figure 2

6. If the gap is not within specifications, adjust the stiffener tab to widen the gap.
 - Using a suitable pair of pliers, adjust the gap by bending the stiffener tab horizontally along the dashed line (see Figure 3).
 - After adjusting the gap, adjust the tab as necessary to a level position (see Figure 3).

CAUTION: Do not adjust the gap by bending the stiffener tab up or down only.

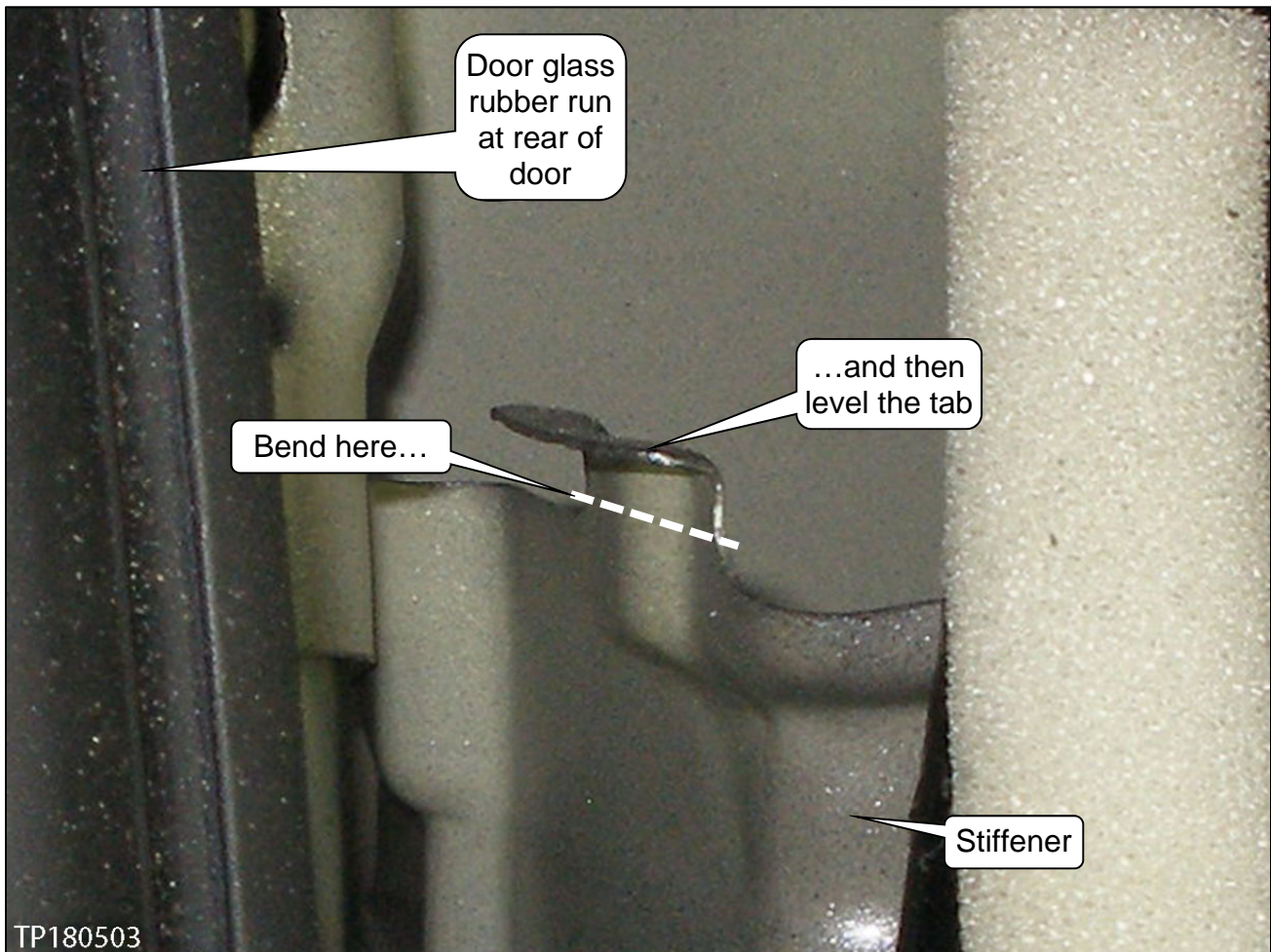


Figure 3

7. Re-install the front door finisher.
 - Refer to the ESM, section **BODY INTERIOR > INTERIOR > REMOVAL AND INSTALLATION > FRONT DOOR FINISHER** for front door finisher installation.

CLAIMS INFORMATION

Submit a Primary Operation (PO) type line claim using the following claims coding:

DESCRIPTION	OP CODE	SYM	DIA	FRT
Adjust Latch Lever	(1)	ZE	32	0.3

- (1) Refer to the Electronic Parts Catalog and use the Front Door Lock Assy (80501-*****) as the Primary Failed Part.

AMENDMENT HISTORY

PUBLISHED DATE	REFERENCE	DESCRIPTION
June 15, 2018	NTB18-042	Original bulletin published
May 4, 2020	NTB18-042a	APPLIED VEHICLES revised

