



Service Bulletin

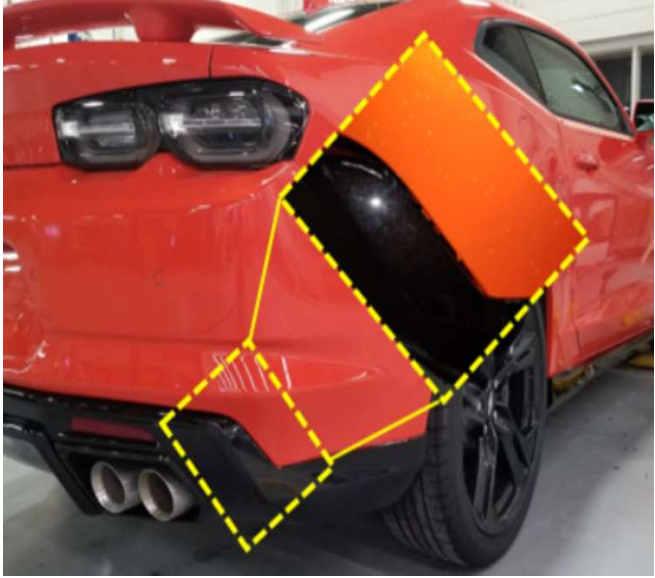
Bulletin No.: 19-NA-084

Date: April, 2020

TECHNICAL

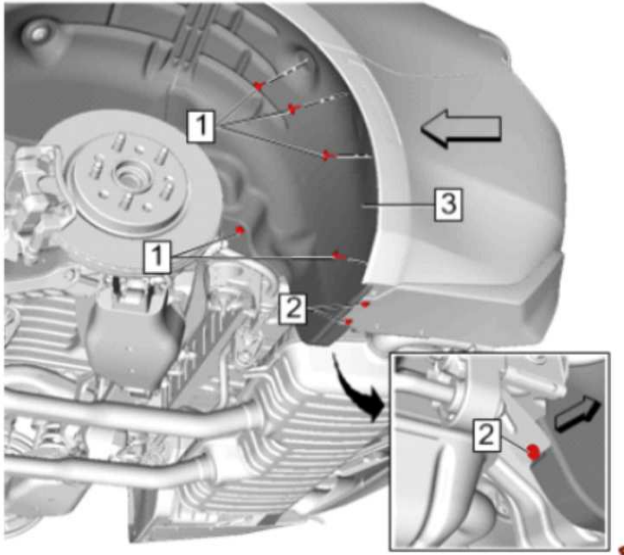
Subject: Ground Effects Fit Issue at Rear Fascia Accessory Valance (Rear Diffuser)

Brand:	Model:	Model Year:		VIN:		Engine:	Transmission:
		from	to	from	to		
Chevrolet	Camaro	2019	2020			All	All

Involved Region or Country	North America, China, GM Korea Company, Japan, Europe, Brazil
Condition	 <p style="text-align: right;">5317583</p> <p>For vehicles with ground effects installed, customers may comment on seeing a fit issue on the rear fascia accessory valance (rear diffuser). They most specifically point out gaps at the areas on each side of the vehicle, where the diffuser and fascia interface, as shown above.</p>
Cause	The cause of the condition may be slight build variation between the rear diffuser and rear fascia.
Correction	This can be corrected by adjusting the fit of the rear diffuser to bumper fascia. Follow the Service Procedure below.

Service Procedure

1. Remove the rear tire and wheel. Refer to *Tire and Wheel Removal and Installation* in SI.



5317587

2. Remove the rear wheelhouse liner screws (1) and rear fascia bolt (2), to allow the rear of the wheelhouse liner (3) to be pulled back and positioned away from the rear fascia. Refer to *Rear Wheelhouse Liner Replacement* in SI.



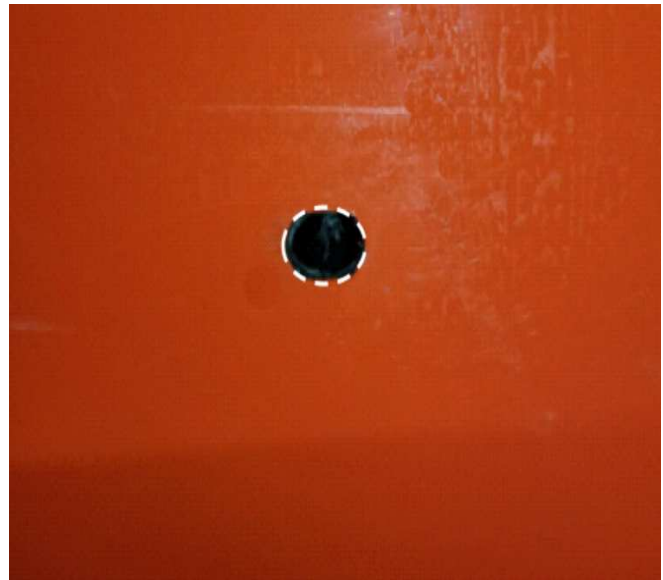
5317589

3. Remove the 5 spin nuts securing the rear diffuser to the fascia.



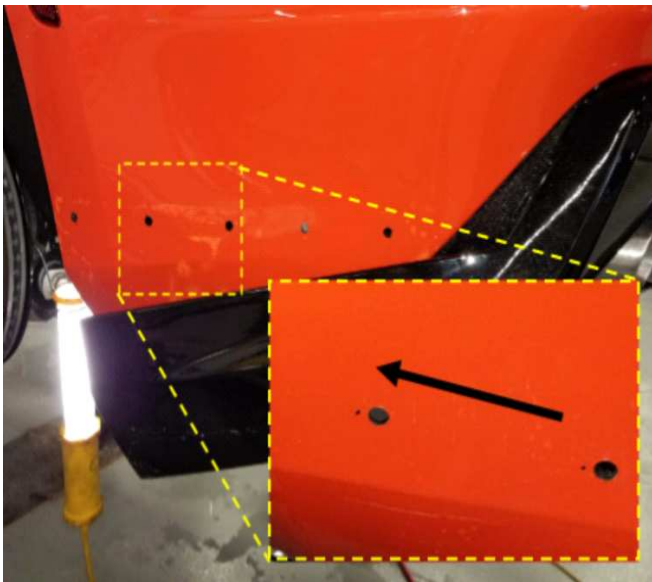
5317590

4. Unclip the diffuser (1) and pull it away from the fascia.



5317593

6. Using a 7 mm (9/32") drill bit, carefully elongate the original holes forward, to the new mark.



5317591

Note: It will be necessary to elongate all 5 holes in the fascia, on each side.

5. Measure **forward, towards the front of the vehicle**, 3 mm (0.120 in) on all holes and mark a new location to drill.



5317596

7. Reassemble the diffuser to the fascia, and with help from an assistant, push the diffuser forward and tight to the fascia. Fasten the 5 spin nuts, making sure the gap between parts is closed.
8. Reposition the wheelhouse liner to the rear fascia and install the fasteners. Refer to *Rear Wheelhouse Liner Replacement* in SI.
9. Install the rear tire and wheel. Refer to *Tire and Wheel Removal and Installation* in SI.
10. Repeat steps 1-9 on the opposite side.

Parts Information

No parts are required for this repair.

Warranty Information

For vehicles repaired under the Bumper-to-Bumper coverage (Canada Base Warranty coverage), use the following labor operation. Reference the Applicable Warranties section of Investigate Vehicle History (IVH) for coverage information.

Labor Operation	Description	Labor Time
0580428*	Elongate Original Fascia Holes, Realign Rear Diffuser	0.8 hr
*This is a unique Labor Operation for bulletin use only.		

Version	2
Modified	Released April 17, 2019 April 17, 2020 – Added the 2020 Model Year and updated the Involved Regions or Country section.

