

## STAR ONLINE PUBLICATION

---

**Case Number:** S1908000065

**Release Date:** 4/30/2020

**Symptom/Vehicle Issue:** Cargo Camera Image Off Center

**Discussion:** Customer complains that cargo camera image is shifted slightly to the side. Do not replace cargo camera or radio or display. Issue will be resolved with radio software enhancements. Verify radio software level 33.3 or higher.

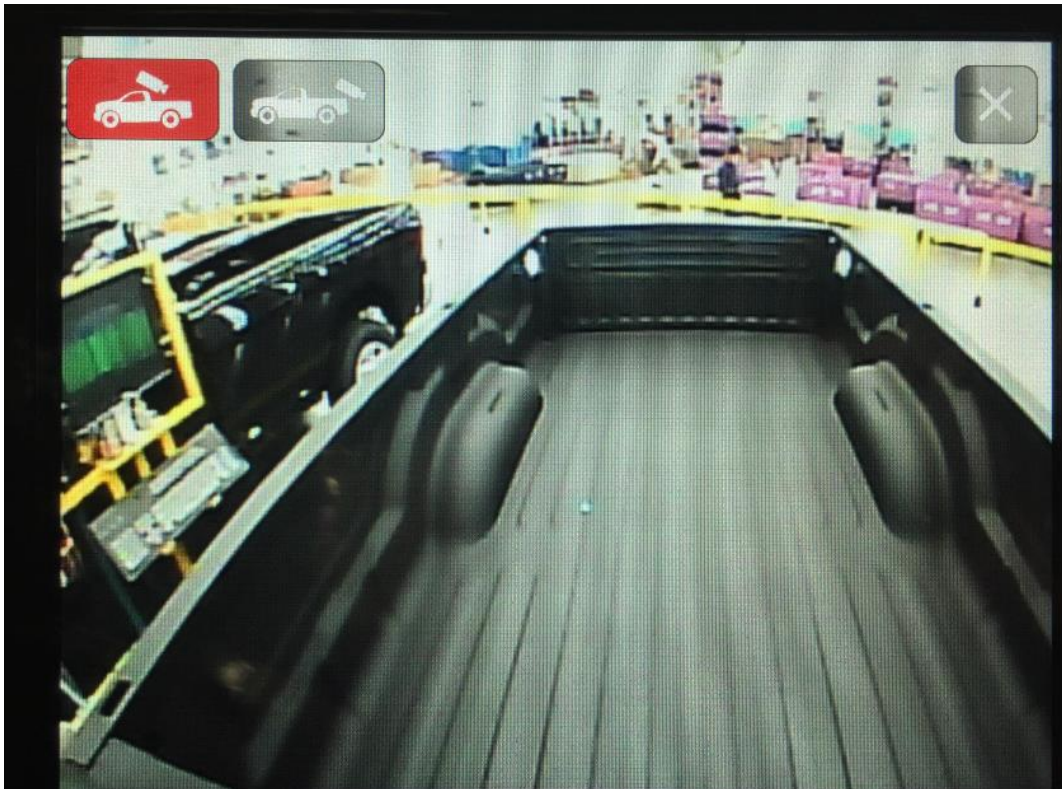


Figure 1

This document does not authorize warranty repairs. This communication documents a record of past experiences. STAR Online does not provide any conclusions about what is wrong with the vehicle. Rather, it captures all previous cases known that appear to be similar or related to the vehicle symptom / condition. You are the expert, and you are responsible for deciding on the appropriate course of action.

**Contact STAR Center, or your Technical Assistance Center Via TechCONNECT or eCONTACT ticket if no solution is found**