



NUMBER: 09-003-20 REV. A

GROUP: 09 - Engine

DATE: March 12, 2020

This bulletin is supplied as technical information only and is not an authorization for repair. No part of this publication may be reproduced, stored in a retrieval system, or transmitted, in any form or by any means, electronic, mechanical, photocopying, or otherwise, without written permission of FCA US LLC.

This bulletin supersedes Service Bulletin 09-003-20, dated February 14, 2020, which should be removed from your files. All revisions are highlighted with **asterisks**** and include Julian date text change.**

This Service Bulletin is also being released as Rapid Response Transmittal (RRT) 20-012, dated February 14, 2020. All applicable Sold and Un-Sold RRT VINs have been loaded. To verify this RRT service action is applicable to the vehicle, use VIP or perform a VIN search in DealerCONNECT/Service Library. All repairs are reimbursable within the provisions of warranty.

SUBJECT:

Inspect Throttle Body Assembly

OVERVIEW:

This bulletin involves inspecting the Julian date on the throttle body and possibly replacing it.

MODELS:

2020	(KL)	Jeep Cherokee
2020	(MP)	Jeep Compass
2019	(DJ)	RAM 2500 Pickup
2019	(LD)	Dodge Charger

NOTE: This bulletin applies to vehicles within the following markets/countries: North America, APAC, EMEA and LATAM.

NOTE: This bulletin applies to the following vehicles:

- DJ vehicles built on or after September 06, 2019 (MDH 0906XX) on or before September 20, 2019 (MDH 0920XX) equipped with a 6.4L Heavy Duty V8 Hemi With MDS (Sales Code ESA).
- LD vehicles built on or after September 06, 2019 (MDH 0906XX) on or before September 21, 2019 (MDH 0921XX) equipped with a 5.7L V8 HEMI MDS VVT Engine (Sales Code EZH).
- KL vehicles built on or after September 06, 2019 (MDH 0906XX) on or before September 20, 2019 (MDH 0920XX) equipped with a 2.4L I4 Zero EVAP M-AIR Engine W/ESS (Sales Code EDE).
- MP vehicles built on or after September 11, 2019 (MDH 0911XX) on or before September 20, 2019 (MDH 0920XX) equipped with a 2.4L I4 Zero EVAP M-AIR Engine W/ESS (Sales Code EDE).

SYMPTOM/CONDITION:

Customers may experience a Malfunction Indicator Lamp (MIL) illumination. Upon further investigation the technician may find that the following Diagnostic Trouble Code (DTC) has been set:

- P2100 - Electronic Throttle Control Motor Circuit/Open - Bank 1.

The customer may also describe the following:

- The vehicle is in limp home mode.

DIAGNOSIS:

If a customer's VIN is listed in VIP or your RRT VIN list, perform the repair. **This RRT only applies to vehicles on the RRT VIN list.**

1. Inspect the Julian date on the throttle body assembly.

NOTE: It may be necessary to raise/remove the engine cover or air cleaner duct in order to see the Julian date. Refer to the detailed service procedures available in DealerCONNECT/Service Library.

2. Referencing the figure below, is the four digit stamped Julian date on the front of the throttle body one of the following: **(Sales Codes ESA and EZH): **On or between 2419 - 2549** with an S1 on the line above the date code or (Sales Code EDE): **On or between 2419 - 2549** (Fig. 1) ?**
 - YES>>> Proceed to [Step 3](#) of the Diagnostic Procedure.
 - NO>>> An **S2** is present. This bulletin has been completed, use LOP (14-25-01-95) to close the active RRT.
3. Is there a **green dot near the bar code also marked on the housing (Fig. 1) ?**
 - YES>>> This bulletin has been completed, use LOP (14-25-01-95) to close the active RRT.
 - NO>>> Proceed to [Step 1](#) of the Repair Procedure.

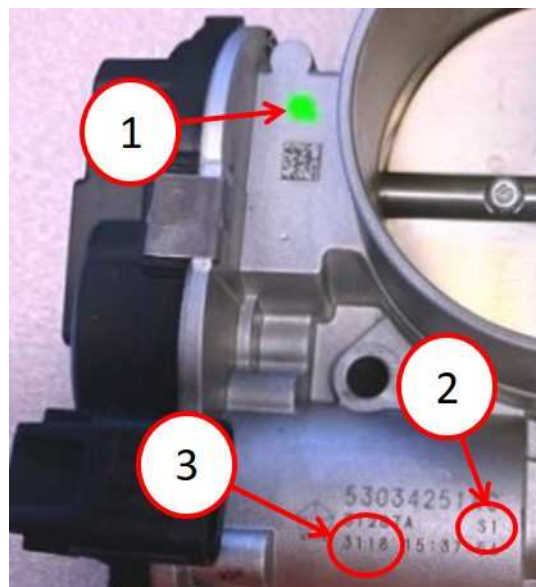


Fig. 1
Julian Date, S1 And Green Dot Locations

- 1 - Green Dot
- 2 - S1 On Stamping (Sales Codes ESA And EZH)
- 3 - Julian Date

PARTS REQUIRED:

Qty.	Part No.	Description
1 (AR)	53034251AD	Throttle Body Control (DJ and LD Only)
1 (AR)	04891970AC	Throttle Body Control (KL and MP Only)
1 (AR)	04627634AA	Throttle Body Seal (DJ Only)
1 (AR)	04627591AA	Throttle Body Seal (LD Only)
1 (AR)	05281991AA	Throttle Body Seal (KL Only)
1 (AR)	68359029AA	Throttle Body Seal (MP Only)

REPAIR PROCEDURE:

CAUTION! Ensure any Electronic Throttle Control (ETC) relearn routines have been performed after replacement of the throttle body. Failure to do so may result in the vehicle not operating correctly.

1. Replace the throttle body assembly and seal:
 - For **DJ vehicles**, refer to the detailed service procedures available in DealerCONNECT/Service Library under: Service Info>09 - Engine, 6.4L/Fuel Injection/Throttle Body/Removal and Installation.
 - For **LD, KL and MP vehicles**, refer to the detailed service procedures available in DealerCONNECT/Service Library under: Service Info>14 - Fuel System/Fuel Injection, Gas/Throttle Body/Removal and Installation.
2. Clear any DTCs that may have been set.

POLICY:

Reimbursable within the provisions of the warranty.

TIME ALLOWANCE:

Labor Operation No:	Description	Skill Category	Amount
14-25-01-95	Throttle Body (All vehicles) - Inspect (2 - Skilled)	1 - Engine Repair and Performance	0.2 Hrs.
14-25-01-96	Throttle Body Assembly (MP vehicles with Sales Code EDE) - Inspect and Replace (2 - Skilled)	1 - Engine Repair and Performance	0.6 Hrs.
14-25-01-96	Throttle Body Assembly (KL vehicles with Sales Code EDE) - Inspect and Replace (2 - Skilled)	1 - Engine Repair and Performance	0.4 Hrs.
14-25-01-96	Throttle Body Assembly (DJ vehicles with Sales Code ESA) - Inspect and Replace (2 - Skilled)	1 - Engine Repair and Performance	0.4 Hrs.

14-25-01-96	Throttle Body Assembly (LD vehicles with Sales Code EZH) - Inspect and Replace (2 - Skilled)	1 - Engine Repair and Performance	0.3 Hrs.
-------------	--	-----------------------------------	----------

FAILURE CODE:

ZZ	Service Action
----	----------------