



HYUNDAI
Technical Service Bulletin

GROUP DRIVESHAFT AND AXLE	NUMBER 20-DS-001H
DATE APRIL, 2020	MODEL(S) Sonata (DN8)

SUBJECT: CV BOOT KIT-DIFF SIDE, RH REPLACEMENT

Description: Certain 2020MY Sonata (DN8) vehicles may exhibit a grease leak coming from the right side, inner CV axle boot area. This bulletin describes the procedure to replace the right side CV axle boot on the differential side (inner) on certain 2020MY Sonata (DN8) vehicles.



Applicable Vehicles: Certain 2020MY Sonata (DN8) vehicles produced from 10/22/2019 to 01/27/2020.

Parts Information:

PART NAME	PART NUMBER	QTY
Boot Kit – Diff Side, RH Kit includes: 1 CV boot, 2 small band clamps, 1 large band clamp, 1 snap ring, 1 small circlip, 1 large circlip, 2 bags of grease	495R5-L1250	1
Axle Nut	49551-4T000	1
Cotter Pin	57799-4D200	1




SUBJECT:

CV BOOT KIT-DIFF SIDE, RH REPLACEMENT

Warranty Information:

MODEL	OP CODE	OPERATION	OP TIME	CAUSAL PART	NATURE CODE	CAUSE CODE
Sonata (DN8)	00DA12R0	Replace RH Differential Boot and Check Wheel Alignment	1.6	495R5-L1250	S12	ZZ3
	00DA12R1	Replace RH Differential Boot and Perform Wheel Alignment	2.0			

NOTE 1: Submit Claim on Campaign Claim Entry Screen**NOTE 2:** If a part is in need of replacement while performing the repair for this TSB and the affected part is still under warranty, please submit a separate claim using the same Repair Order. If the affected part is out of warranty, submit a Prior Approval Request for goodwill consideration prior to performing the work.**SST Information:**

DESCRIPTION	IMAGE	PART #
Ball Joint Remover	 A black metal ball joint remover tool with a green sticker on the handle.	09568-2J100
Gear Puller	 A Snap-on CJ66-1 gear puller tool with a black handle and silver metal body.	Snap-on CJ66-1 (Any alternative pullers are acceptable)
CV Band Clamp Tool	 A CV band clamp tool with black handles and orange tips.	09495-3K000A

SUBJECT:**CV BOOT KIT-DIFF SIDE, RH REPLACEMENT**

DESCRIPTION	IMAGE	PART #
CV Band Clamp Tool	 A pair of pliers with red handles and black metal jaws, used for clamping CV boots.	OTC 4724 (or equivalent tool)

NOTICE

- SSTs #09568-2J100 and #09495-3K000A are essential tools and were included as part of the Hyundai dealer tool kit.
- All tools listed above are available from Bosch 1-866-539-4248.

Service Procedure

1. Lift the vehicle and remove the front right wheel.

Tightening torque:

lb-ft • 79.6-94.0

kgf.m • 11.0-13.0

N.m • 107.9-127.5



2. Using a chisel and hammer, unstake the axle nut.

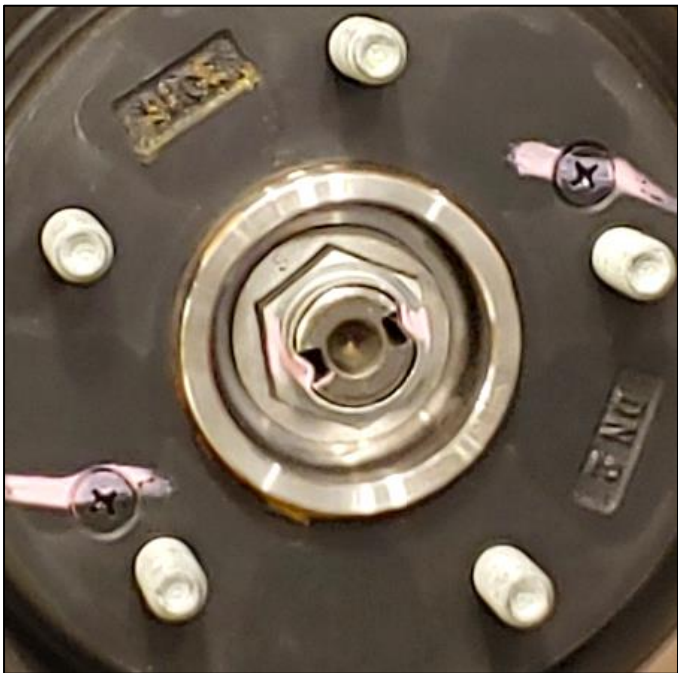
Remove the axle nut.

Tightening torque:

lb-ft	• 217.0-231.5
kgf.m	• 30.0-32.0
N.m	• 294.2-313.8

NOTICE

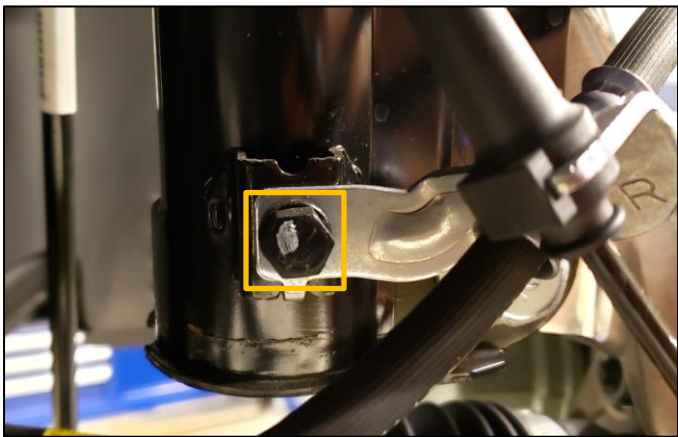
Use a new axle nut during re-assembly and stake both sides.



3. Remove the bolt for the brake line bracket.

Tightening torque:

lb-ft	• 6.5-10.1
kgf.m	• 0.9-1.4
N.m	• 294.2-313.8



4. Remove the bolt for the front right wheel speed sensor, and remove the wheel speed sensor from the knuckle assembly.

Tightening torque:

lb-ft	• 5.1-8.0
kgf.m	• 0.7-1.1
N.m	• 6.9-10.8



5. Remove the right side tie rod end cotter pin and castle nut.

Tightening torque:

lb-ft • 72.3-86.7

kgf.m • 10.0-12.0

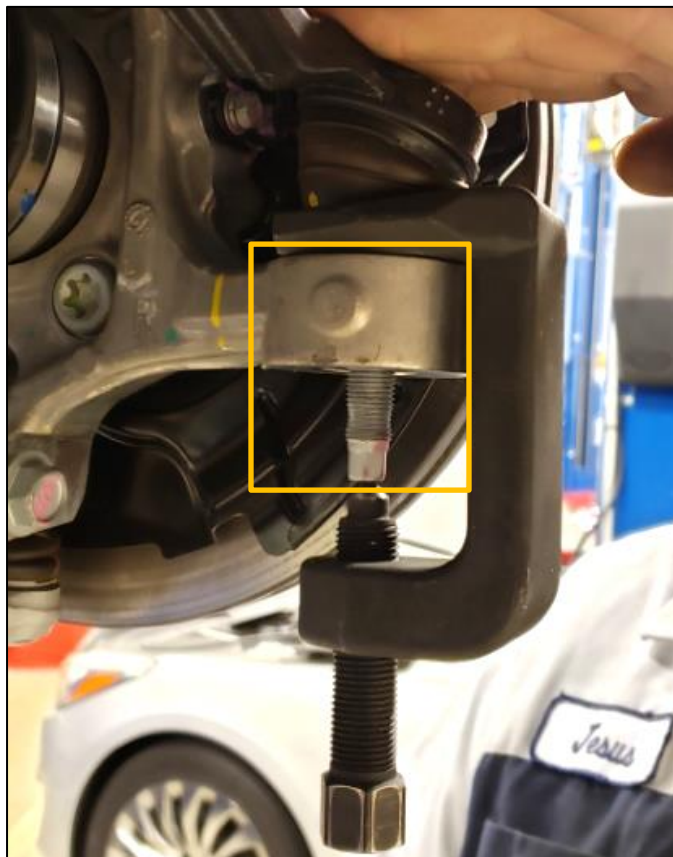
N.m • 98.0-117.6

NOTICE

Use a new cotter pin during re-assembly.



6. Use Ball Joint Remover SST 09568-2J100 to separate the tie rod end ball joint and release the tie rod end from the knuckle.



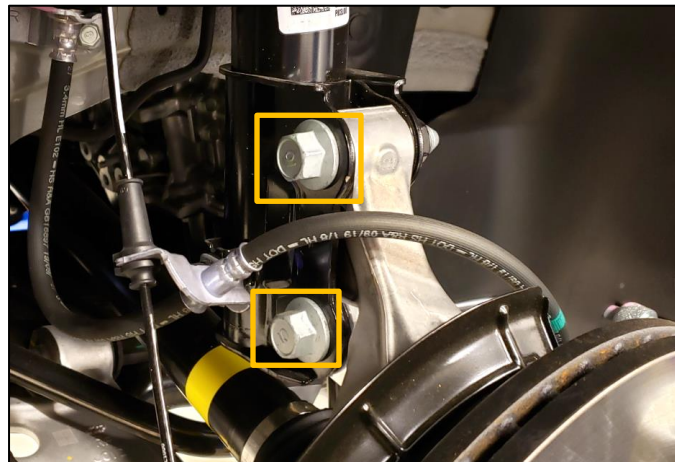
7. Remove the two strut bolts and nuts from the knuckle.

Tightening torque:

lb-ft • 144.7-159.1

kgf.m • 20.0-22.0

N.m • 196.1-215.7



8. Remove the splined end of the CV joint from the knuckle assembly by pushing it inwards while maneuvering the knuckle assembly outwards.



9. Support the knuckle assembly using a bungee cord, hanger, or similar to minimize strain on the brake caliper line.



10. Use a pry bar to carefully release the CV axle from the transmission.



11. Remove the CV axle assembly from the vehicle.



12. Remove the circlip on the end of the axle shaft, transmission side.

NOTICE

Use the provided new circlip during re-assembly.



13. Remove the small band clamp using pliers.

NOTICE

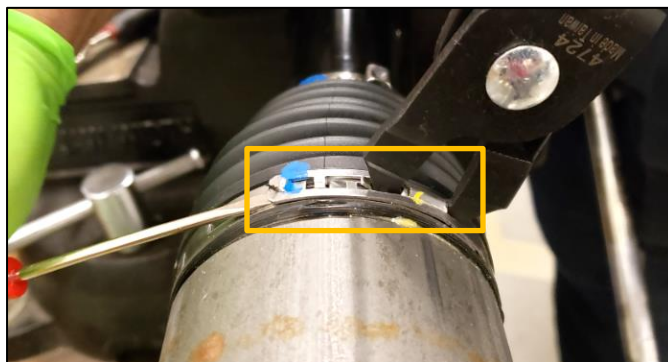
Use the provided new small band clamp during re-assembly.



14. Remove the large band clamp using the OTC CV band clamp tool and a small flathead screwdriver.

NOTICE

Use the provided new large band clamp during re-assembly.



15. Pull the CV boot back to expose the circlip inside the cup. Remove the circlip.

NOTICE

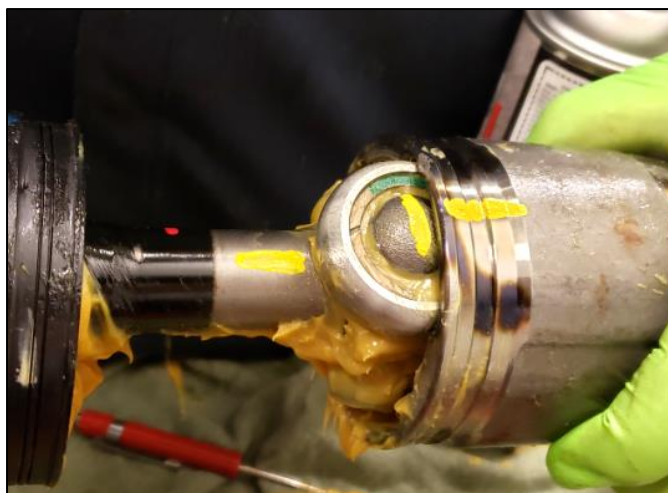
Use the provided new circlip during re-assembly.



16. Before removing the cup from the CV assembly, wipe away the grease and use a paint pen to mark the alignment of the cup, the spider assembly, and the CV shaft.

Align these marks when re-assembling.

Remove the cup from the CV assembly.



17. Use a pair of snap-ring pliers to remove the snap ring from the CV shaft.

NOTICE

Use a new snap ring during re-assembly.



18. Use a puller to remove the spider assembly from the CV shaft.



19. Thoroughly clean the spider assembly and CV shaft of any residual grease.

20. Loosely position the new small band clamp onto the new CV boot, then slide the boot onto the CV shaft.



21. Using the alignment marks made previously, install the spider assembly back onto the CV shaft. Secure the assembly using a new snap-ring.

Apply the grease from one of the two provided bags to the spider assembly.

Apply the grease from the second bag into the cup.



22. Install a provided new circlip into the CV cup.



23. Seat the CV boot onto the cup.



24. Install a new large CV band clamp.



25. Secure the small CV band clamp using CV Band Clamp Tool SST 09495-3K000A by pinching the ear together.



26. Install a provided new circlip onto the end of the CV shaft.



27. Install the CV axle assembly into the vehicle in reverse order of removal.
Check vehicle wheel alignment, and perform adjustment if necessary.