



Countries: CANADA, UNITED STATES **Document ID:** IK2200147
Availability: ISIS, Bus ISIS, IsSIR **Revision:** 0
Major System: BUS BODY **Created:** 4/13/2020
Current Language: English **Last Modified:** 4/17/2020
Other Languages: NONE **Author:** Brandon Akridge
Viewed: 65

[Less Info](#)

Hide Details

Coding Information

Copy Link 	Copy Relative Link 	Bookmark View My Bookmarks	Add to Favorites 	Print 	Provide Feedback 	Helpful 2	Not Helpful 1
----------------------	-------------------------------	------------------------------------------------------	-----------------------------	------------------	-----------------------------	---------------------	-------------------------

Title: CE Bus fuel sending access hole in wrong location

Applies To: CE Bus with feature 47AEU built between 5/7/19 and 2/19/20

CHANGE LOG

Please refer to the change log text box below for recent changes to this article:

04/17/2020 - Initial Article Release

DESCRIPTION

Some CE buses were built with the fuel sender inspection hole installed in the wrong location.

SYMPTOM(s)

Customer Observations or Concerns:

When removing the inspection plate, the fuel sender is not located directly below the access hole.



SPECIAL TOOL(s) / SOFTWARE

Normal shop tools

Tool Description	Tool Number	Comments	Instructions
4.5" hole saw			Procure Locally

Drill		Procure Locally
-------	--	-----------------

SERVICE PARTS INFORMATION

Both the standard and the optional diamond plate are listed below. You will need to order either the standard cover with black screws, or the diamond plate cover with HD screws based on which plate the bus is equipped with. You will not need both.

Kit Description	Part Number	Quantity Required	Notes
PLATE COVER FUEL SENDING UNIT	419944001	1	Order these 2 parts for standard plate cover
SCREW PAN HD 10-16X3/4 BLACK	592559C1	8	
PLATE, FUEL SENDING UNIT DIAMOND TREAD PATTERN	436808001	1	Order these 2 parts for diamond plate cover
SCREW, SELF-DRILLING PAN HD CR#10-16 X 3/4	27384R1	8	

DIAGNOSTIC STEP(S)

Step	Action	Decision
1	<p>DIAGNOSTIC:</p> <p>Is the fuel sending hole located in the proper location? See Figure 1 for incorrect hole location.</p>	<p>Yes. No further action is needed.</p> <hr/> <p>No. Proceed to repair steps.</p>



Figure 1: Fuel Sending access hole

Item 1: Fuel Sending access hole

REPAIR STEP(s)

REMOVAL PROCEDURE

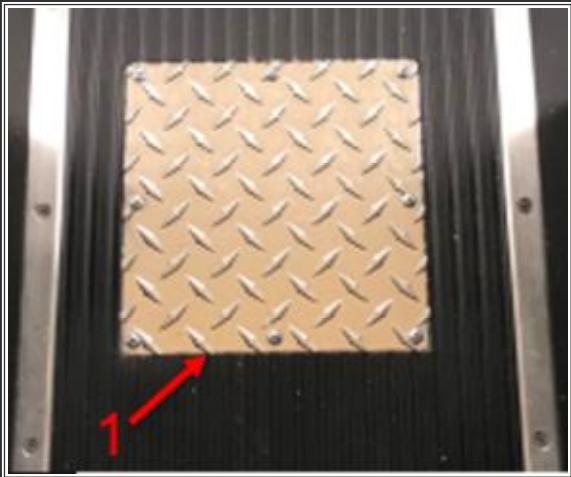


Figure 2: Fuel sending access plate cover

Item 1: Plate cover

1. Locate fuel sending access plate cover in center of the aisle, see figure 2 above.
2. Remove the 8 screws and remove plate
3. Look in hole to see where fuel sender is located, see figure 3, a flashlight may be needed

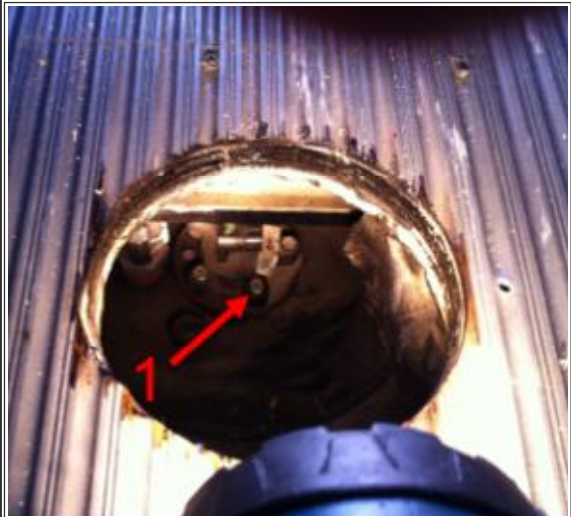


Figure 3: Fuel sender

Item 1: Fuel sender

INSTALLATION PROCEDURE:



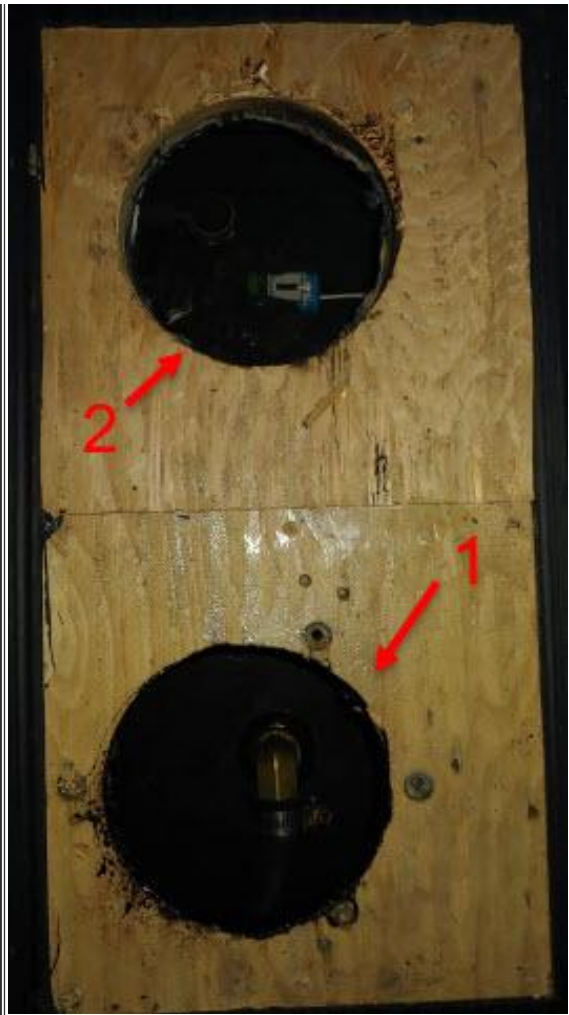


Figure 4: Dual holes

Item 1: Original hole in wrong location

Item 2: New hole in correct location

1. After new hole location is found, mark center for drilling
2. Take your 4.5" hole saw and cut a new hole as shown in figure 4. Note for recessed plates, the floor mat will need to be cut out of the way as shown in figure 4.
3. Reinstall original plate and then install new plate, see figure 5 below.



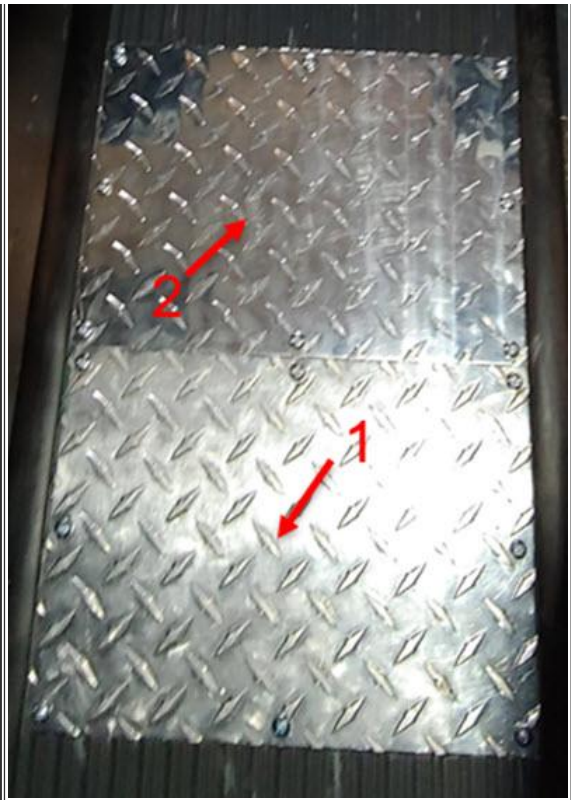


Figure 5: Dual Plates

- Item 1: Original Plate
- Item 2: New Plate

WARRANTY INFORMATION

Warranty Claim Coding:

Refer to the [Warranty Coding Manual](#) for Group and Noun Codes.

Standard Repair Time(s):

Refer to the [SRT Manual](#) for Repair Times

OTHER RESOURCES

[Master Service Information Site](#)

Hide Details

Feedback Information

Viewed: 64
 Helpful: 2
 Not Helpful: 1

No Feedback Found