



SIM 51 01 20 FRONT DOORS DO NOT LATCH IN COLD WEATHER

2020-03-18

E-Series	Model Description	Production Date
F54	MINI Clubman	Up to March, 2019
F55	MINI Hardtop 4 Door	Up to March, 2019
F56	MINI Hardtop 2 Door	Up to March, 2019
F57	MINI Convertible	Up to March, 2019

SITUATION

At ambient temperatures below freezing, one or both front doors may not open when attempting to enter.

In some cases, after opening, they may not correctly latch.

CAUSE

A missing seal on the inner Bowden release cable may allow water to enter the cable sheathing and freeze.

CORRECTION

Inspect and replace the inner door handle Bowden cable if necessary.

PROCEDURE

For conditions similar to those described above:

1. Remove the inner Bowden cable on the affected door as per ISTA/AIR repair instructions.

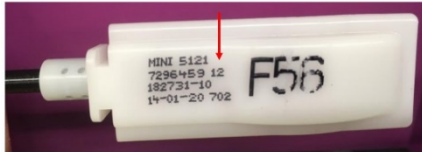


2. Visually inspect the Bowden release cable for the inner door handle of the affected door(s) for signs or water or corrosion in the area circled.

3. Are water droplets or corrosion present on the cable?

Yes: Replace the affected Bowden cable, following ISTA/AIR repair instructions for the affected door. See the note below.

No: Continue troubleshooting. This SIB does not apply.



NOTE: Before replacing a Bowden cable, ensure the AI number (arrow) of the replacement cable is as outlined in the table below.

Model	AI required
F54	10 or higher
F55	14 or higher
F57/F56	12 or higher

PARTS INFORMATION

Obtain and confirm the part numbers for your specific vehicle by entering the chassis number in either ETK or AIR which takes into account specific equipment and/or options.

Part Number	Description	Quantity
Refer to ETK/AIR	Bowden cable, inside door opener, front	1 or 2

WARRANTY INFORMATION

Covered under the terms of the MINI New Passenger Car Limited Warranty.

Defect Code:	5121043400	Lock button including linkage/bowden cable, front sluggish
Labor Operation	Description	Labor Allowance
51 21 235	Remove and install/replace Bowden cable for inner door opener on left or right front door (Main work)	Refer to AIR
Or:		
51 21 735	Remove and install/replace Bowden cable for inner door opener on left or right front door (Plus work)	Refer to AIR
And:		
51 00 001	Work time to remove and install/replace Bowden cable for inner door opener on left or right front door (Associated work, repairing the other side with 51 21 235/735)	5 FRU (F54); 4 FRU (F55, F56, F57)

If you are using a Main labor code for another repair, use the Plus code labor operation 51 21 735 instead of 51 21 235.

Refer to AIR for the corresponding flat rate unit (FRU) allowances

Work time labor operation code 51 00 001 is not considered a Main labor operation. Also, since the work time FRU allowance to be claimed is specified, a separate punch time is not required. However; it still requires an explanation on the repair order and in the claim comments section.

Other Repairs

If other eligible and covered work is performed as a result of performing an inspection of the related components, claim this work with the applicable defect code and the labor operations that are listed in AIR (including diagnosis with separate punch times).