



Technical Service Bulletin

20 MIL on or difficulty refueling, DTC P045100, P044100, P202500, and/or P045300 are stored in the ECM

20 20 26 2050276/6 April 23, 2020. Supersedes Technical Service Bulletin Group 20 number 20-25 dated February 12, 2020 for reasons listed below.

| Model(s) | Year | VIN Range | Vehicle-Specific Equipment |
|----------|-------------|-----------|----------------------------|
| A6, A7 | 2016 - 2018 | All | 3.0T and 2.0T |

Condition

| REVISION HISTORY | | |
|------------------|------------|--|
| Revision | Date | Purpose |
| 6 | - | Revised header (Extended applicable VINs) |
| 5 | 02/12/2020 | Revised header (Extended applicable VINs) Revised <i>Required Parts and Tools</i> (Updated tool number) |
| 4 | 12/18/2019 | Revised header (Added Model) |

Customer has one or more of the following concerns:

- The customer has problems filling the fuel tank (fuel nozzle keeps clicking off).
- MIL may be illuminated.

Workshop findings:

- Water and/or ice is found in the EVAP canister reservoir and natural vacuum leak detection (NVLD or J909) pressure switch.

Also one or more of the following DTCs is found in the engine control module (ECM), J623 (address word 0001):

- **DTC P045100** (pressure sensor for the tank ventilation system, implausible signal).
- **DTC P044100** (tank ventilation system, through-flow faulty).
- **DTC P202500** (Evaporative Emissions (EVAP) Fuel Vapor Temperature Sensor Performance).
- **DTC P045300** (EVAP Emission Contr.Sys.Press.Sensor High Input).

Technical Background

Water enters through the tank ventilation system. The water can flow through the NVLD pressure switch into the EVAP canister and freeze in cold temperatures.



Technical Service Bulletin

Production Solution

Not applicable.

Service

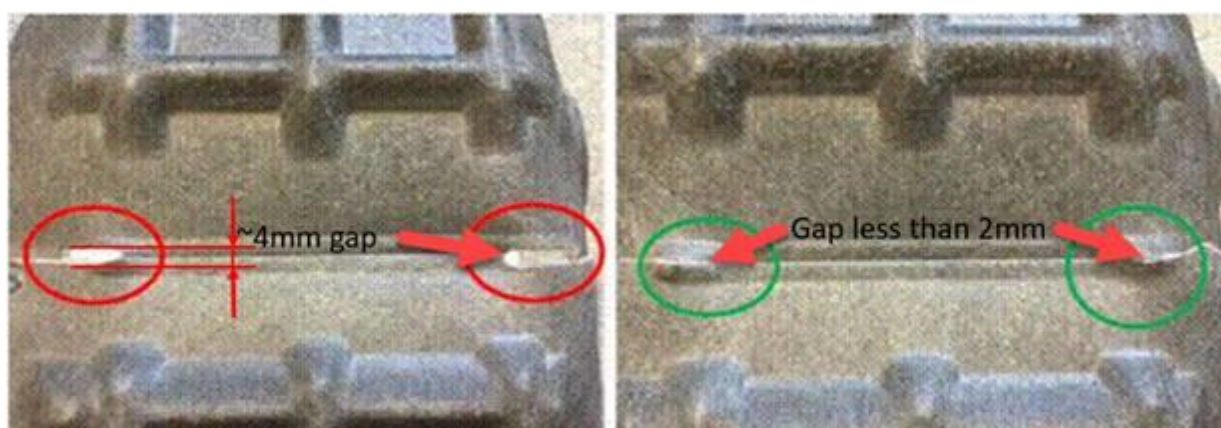


Figure 1. How to determine which steps to take Version 1 (~4mm gap) or Version 2 (gap less than 2mm).

Version 1 (A6 only):

1. If the updated wheel liner has not yet been installed. Then install the updated wheel liner, which has closed slots around the NVLD filter.
 - Remove the EVAP canister, ventilation tube, and NVLD pressure switch.
 - Remove all components mounted on the EVAP canister.
2. Weigh the EVAP canister:
 - If it weighs more than 2650 grams, replace the EVAP canister + attached filter, ventilation tube (Figure 2), and NVLD pressure switch (J909).
 - If it weighs less than 2650 grams, replace the ventilation tube, and the J909.



Figure 2. Ventilation tube of the EVAP canister.



Technical Service Bulletin

Version 2:

If updated wheel liner has already been installed at previous repair or in the factory, the NVLD filter needs to be relocated into the engine compartment to prevent moisture entering the EVAP system, under extreme customer use conditions.

1. Replace the EVAP canister only if weight is greater than 2650 grams.
 - Install a new J909.
 - Install the NVLD filter (new part number, Version 2) in the engine compartment on the left frame rail just in front of the ABS module, secure with M6 nut. (Figure 3).



Figure 3. Installing the new NVLD filter.



Technical Service Bulletin

2. Connect the filter to the 5/8" ID rubber hose via 1x plastic elbow and 1x rubber elbow (Figure 4).

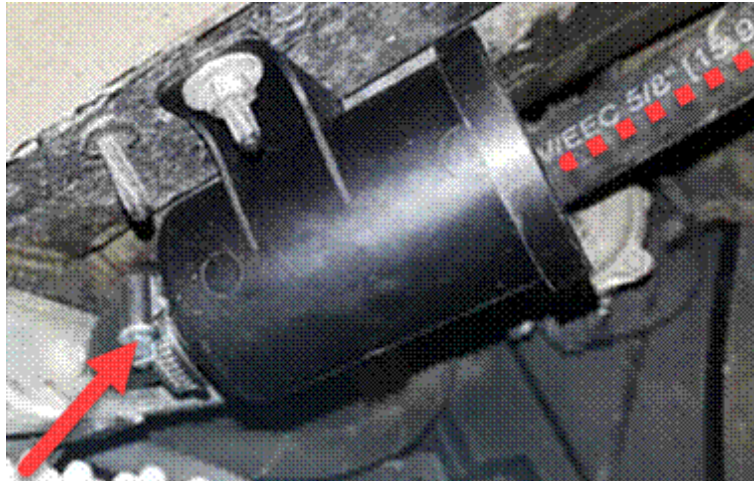


Figure 4. Connecting the NLVD filter.

- Route the 5/8" ID rubber hose behind the strut and brake lines from new filter position to the J909, along the orange battery cable (Figure 5 and 6). Then secure with zip ties.
- 3.

 **Note:**

5/8" ID rubber hose needs to be routed in a way that there are no sharp bends to prevent kinking.



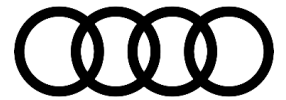
Figure 5. Route the 5/8" ID rubber hose from new filter position to the J909.



Technical Service Bulletin



Figure 6. Routing the rubber hose.



Technical Service Bulletin

4. Routing details to the J909, along the orange battery cable. Add zip-ties every 12 inches (Figure 7).



Figure 7. Where to zip tie the rubber hose to the battery cable.

5. Before connecting 5/8" ID rubber hose to 90 degree connector, cut to length, as needed. Connection details to the J909 are shown in Figure 8 and 9.



Figure 8. Connecting to the J909.



Technical Service Bulletin



Figure 9. Closer look at the connections.

6. Remove original NVLD filter assembly. (Figure 10).



Figure 10. Remove original NVLD filter.

Warranty

| | |
|------------------------|---|
| Claim Type: | <ul style="list-style-type: none">• 110 up to 48 Months/50,000 Miles.• G10 for CPO Covered Vehicles – Verify Owner.• If the vehicle is outside any warranty, this Technical Service Bulletin is informational only. |
| Service Number: | 2041 |



Technical Service Bulletin

| | | | |
|--------------------------|---|--------------|--|
| Damage Code: | 0010 | | |
| Labor Operations: | Wheel housing liner remove + reinstall | 6676 1900 | See SRT (V1 and 2) |
| | Ventilation tube with filter remove + reinstall | 2048 1912 | See SRT (V1 and 2) |
| | Activated charcoal filter remove + reinstall | 2025 1900 | See SRT (V1 and 2) |
| | NVLD pressure switch remove + reinstall | 2041 1950 | See SRT (V1 and 2) |
| | Install NVLD filter in optimize position including routing of rubber hose | 2041 9999 | 280 TU (V2 only) |
| Diagnostic Time: | GFF | 0150 0000 | Time stated on the diagnostic protocol (Max 10 TU) (V1 and 2) |
| | Road test prior to service procedure | No allowance | 0 TU |
| | Road test after service procedure | No allowance | 0 TU |
| Claim Comment: | As per TSB #2050276/6 | | |

All warranty claims submitted for payment must be in accordance with the *Audi Warranty Policies and Procedures Manual*. Claims are subject to review or audit by Audi Warranty.

Required Parts and Tools

| Always check with your Parts Department and/or ETKA for the latest information and parts bulletins. | | |
|---|---|-------------------|
| Part Number | Part Description | Quantity |
| 4G0201997BD | Ventilation tube with filter (Version 1) | 01 |
| 8K0906253L | NVLD pressure switch (Version 1 and 2) | 01 |
| 4G0201801D | Activated charcoal filter (Version 1 and 2) | 01 (If necessary) |
| 4G0810171B | Wheel liner (Version 1) | 01 |



Technical Service Bulletin


| | | |
|------------|--|-------------------|
| 8R0201232E | Filter (Version 1 and 2) | 01 (If necessary) |
| 1C0906621A | NVLD filter (Version 2) | 01 |
| N 90887703 | M6 nut (Version 2) | 01 |
| 5Q0906272 | Rubber elbow (Version 2) | 02 |
| See ETKA | Fasteners, Bolts, Nuts, and Screws as needed per the Repair Manual | See ETKA/ELSA |

| Part Number | Part Description | Quantity |
|------------------|--|----------|
| Outside material | Aftermarket 5/8"ID rubber hose (Version 2) | 12 feet |
| Outside material | Aftermarket 5/8"OD elbow (Version 2) | 02 |
| Outside material | Aftermarket hose clamps (Version 2) | 06 |
| Outside material | Zip-ties | 30 |



Note:

No more than \$30 will be covered by Warranty.

| Tool Number | Tool Description |
|-------------|---|
| CPWP15 |  Digital scale (MRT tool (or equivalent)) |



Technical Service Bulletin

Additional Information

All parts and service references provided in this TSB (2050258) are subject to change and/or removal.

©2020 Audi of America, Inc. All rights reserved. Information contained in this document is based on the latest information available at the time of printing and is subject to the copyright and other intellectual property rights of Audi of America, Inc., its affiliated companies and its licensors. All rights are reserved to make changes at any time without notice. No part of this document may be reproduced, stored in a retrieval system, or transmitted in any form or by any means, electronic, mechanical, photocopying, recording, or otherwise, nor may these materials be modified or reposted to other sites without the prior expressed written permission of the publisher.