



# Service Bulletin

Bulletin No.: 20-NA-068

Date: March, 2020

## TECHNICAL

**Subject:** Service Engine Soon Message on Driver Information Center (DIC) with the following DTCs set: P00FF, B2B05, B2B06

| Brand:   | Model: | Model Year: |      | VIN: |    | Engine: | Transmission: |
|----------|--------|-------------|------|------|----|---------|---------------|
|          |        | from        | to   | from | to |         |               |
| Cadillac | CT5    | 2020        | 2020 |      |    | All     | All           |

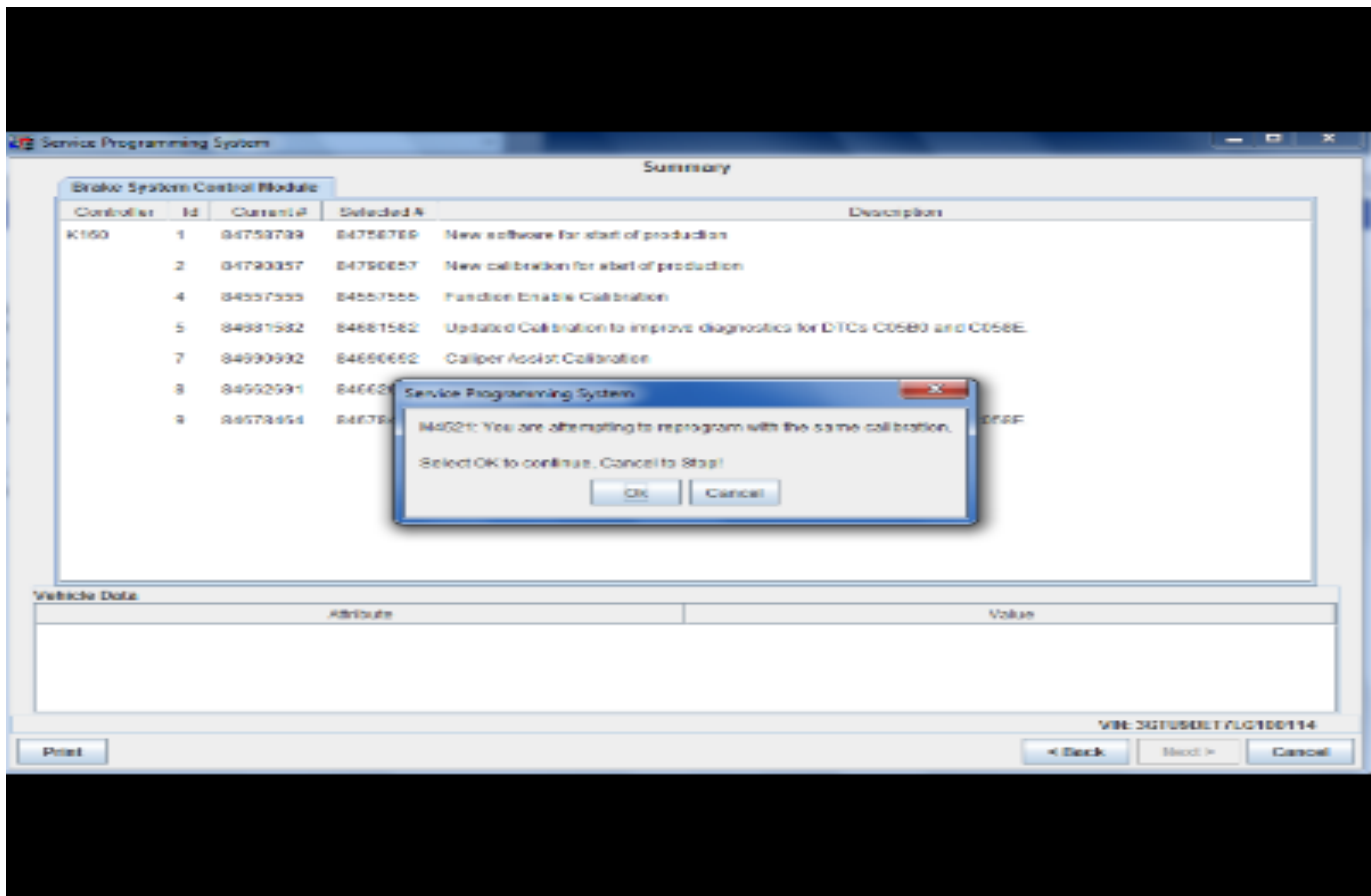
|                                   |   |
|-----------------------------------|---|
| <b>Involved Region or Country</b> | North America, Middle East, Israel, Palestine, South Korea  |
| <b>Condition</b>                  | Some customers may comment on a Service Engine Soon message in the Driver Information Center (DIC).<br>A technician may find the following DTCs set current or in history: <ul style="list-style-type: none"> <li>• P00FF: Body Control Module Requested MIL Illumination</li> <li>• B2B05: Left Front Temperature Actuator Performance</li> <li>• B2B06: Right Front Temperature Actuator Performance</li> </ul> |
| <b>Cause</b>                      | The cause of the condition may be an anomaly in the BCM software.   |
| <b>Correction</b>                 | Check for Body Control Module software version 20.20.145.20 or greater. <ul style="list-style-type: none"> <li>• If the vehicle is not up-to-date with the latest software, then reprogram the BCM. Follow the Service Procedure below.</li> <li>• If the vehicle is up-to-date, then refer to SI for further diagnostics.</li> </ul>   |

### Service Procedure

**Caution:** Before downloading the update files, be sure the computer is connected to the internet through a network cable (hardwired). DO NOT DOWNLOAD or install the files wirelessly. If there is an interruption during programming, programming failure or control module damage may occur.

**Note:** Carefully read and follow the instructions below.

- Ensure the programming tool is equipped with the latest software and is securely connected to the data link connector. If there is an interruption during programming, programming failure or control module damage may occur.
- Stable battery voltage is critical during programming. Any fluctuation, spiking, over voltage or loss of voltage will interrupt programming. Install a GM Authorized Programming Support Tool to maintain system voltage. Refer to [www.gmdesolutions.com](http://www.gmdesolutions.com) for further information. If not available, connect a fully charged 12V jumper or booster pack disconnected from the AC voltage supply. DO NOT connect a battery charger.
- Turn OFF or disable systems that may put a load on the vehicles battery such as; interior lights, exterior lights (including daytime running lights), HVAC, radio, etc.
- Clear DTCs after programming is complete. Clearing powertrain DTCs will set the Inspection/Maintenance (I/M) system status indicators to NO.

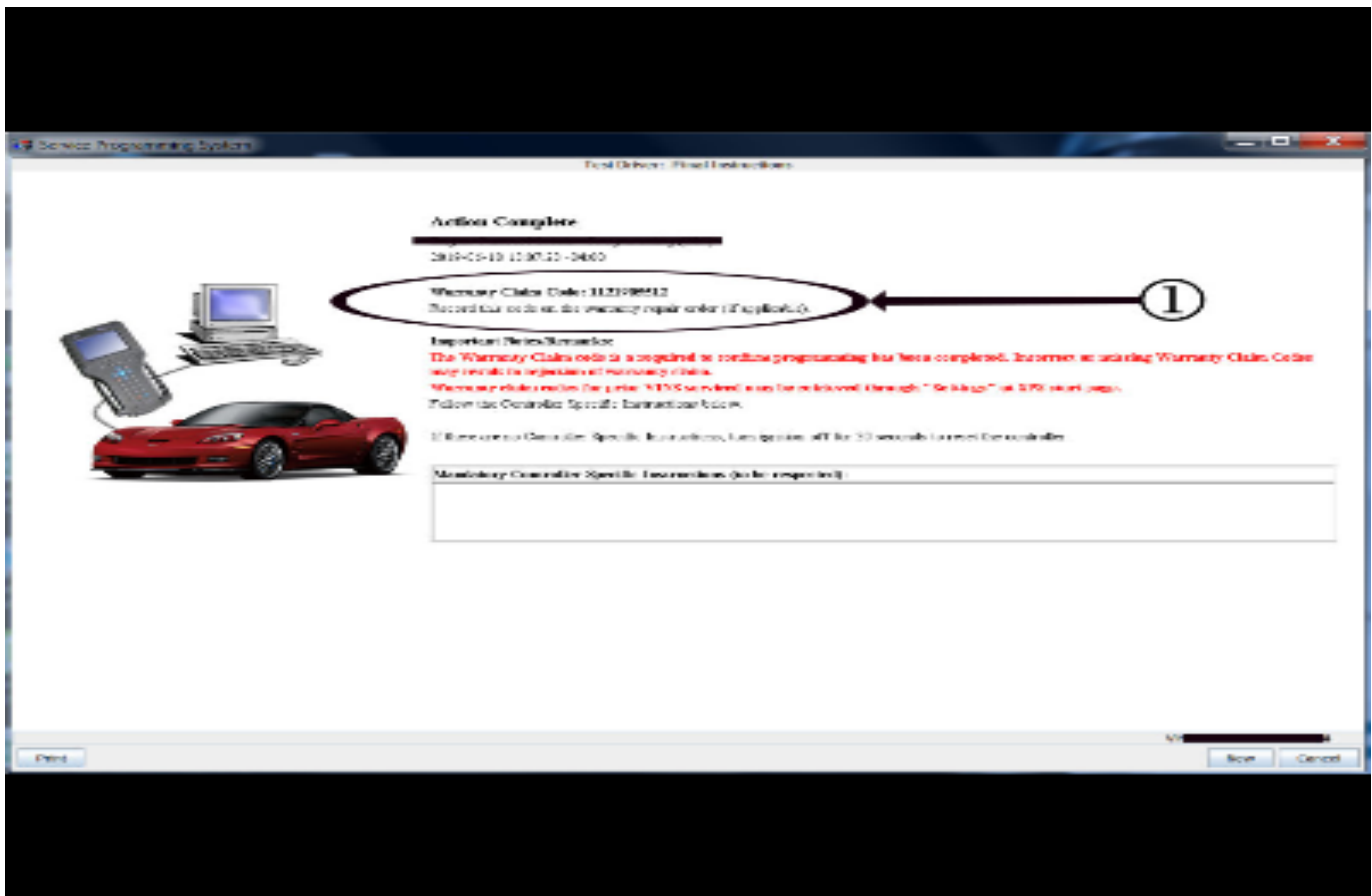


5431207

**Important:** If the Same Calibration/Software Warning is noted on the SPS screen, select OK and follow screen instructions. After a successful programming event, the WCC is located in the Service Programming

System dialogue box of the SPS Summary screen. No further action is required. Refer to the Warranty Information section of this bulletin.

1. Reprogram the Body Control Module. Refer to *K9 Body Control Module: Programming and Setup* in SI. Modify as required (e.g., select x module from the controller screen). Then provide step-by-step instructions or refer to SI procedure.



5431209

**Important:** To avoid warranty transaction rejections, you **MUST** record the warranty claim code provided on the SPS Warranty Claim Code (WCC) screen on the job card. Refer to callout 1 above for the location of the WCC on the SPS screen.

2. Record the SPS Warranty Claim Code on the job card for warranty transaction submission.

### Warranty Information

For vehicles repaired under warranty, use:

| Labor Operation | Description                                | Labor Time                         |
|-----------------|--|------------------------------------|
| 2810215*        | Body Control Module Reprogramming with SPS | Use Published Labor Operation Time |

**Important:** \*To avoid warranty transaction rejections, carefully read and follow the instructions below:

- The SPS Warranty Claim Code must be accurately entered in the “SPS Warranty Claim Code” field of the transaction.
- When more than one Warranty Claim Code is generated for a programming event, it is required to document all Warranty Claim Codes in the “Correction” field on the job card. Dealers must also enter one of the codes in the “SPS Warranty Claim Code” field of the transaction, otherwise the transaction will reject. It is best practice to enter the FINAL code provided by SPS.

**Warranty Claim Code Information Retrieval**

If the SPS Warranty Claim Code was not recorded on the Job Card, the code can be retrieved in the SPS system as follows:

1. Open TIS on the computer used to program the vehicle.
2. Select and start SPS.
3. Select Settings.
4. Select the Warranty Claim Code tab.

The VIN, Warranty Claim Code and Date/Time will be listed on a roster of recent programming events. If the code is retrievable, dealers should resubmit the transaction making sure to include the code in the SPS Warranty Claim Code field.

|                 |                         |
|-----------------|-------------------------|
| <b>Version</b>  | 1                       |
| <b>Modified</b> | Released March 17, 2020 |

