



Service Bulletin

Bulletin No.: 20-NA-046

Date: March, 2020

TECHNICAL

Subject: Malfunction Indicator Lamp (MIL) Illuminated - DTC P0365 and/or P0366 Set

| Brand: | Model: | Model Year: | | VIN Breakpoint: | | Engine: | Transmission: |
|-----------|--------|-------------|------|-----------------|----------|-------------------|---------------|
| | | from | to | from | to | | |
| Chevrolet | Malibu | 2020 | 2020 | SOP | LF107311 | 1.5L (RPO Lfv) | |

| | |
|-----------------------------------|--|
| Involved Region or Country | North America |
| Condition | Some customers may comment that the MIL is illuminated. Some technicians may find one or more of the following DTCs set in the Engine Control Module (ECM): <ul style="list-style-type: none"> • P0365: Exhaust Camshaft Position Sensor Circuit • P0366: Exhaust Camshaft Position System Performance |
| Cause | This condition may be caused by a software anomaly. |
| Correction | <ol style="list-style-type: none"> 1. Enter the vehicle VIN to the IVH verifying if Service Update N202295800 applies to that VIN: <ul style="list-style-type: none"> • If Service Update N202295800 applies to the VIN, perform Service Update N202295800 and no further action is required. • If Service Update N202295800 does not apply to the VIN, continue with this procedure. 2. Verify if the ECM has the latest software available. <ul style="list-style-type: none"> ⇒ If the vehicle has the most current level of software, refer to SI for further diagnostics. 3. If necessary, reprogram the ECM with the latest software available. <ul style="list-style-type: none"> ⇒ After reprogramming, perform several key starts waiting briefly between starts to allow all modules to power down: <ul style="list-style-type: none"> • If DTCs do not reset, return the vehicle to the customer. • If DTCs reset, use SI to further diagnose the condition. |

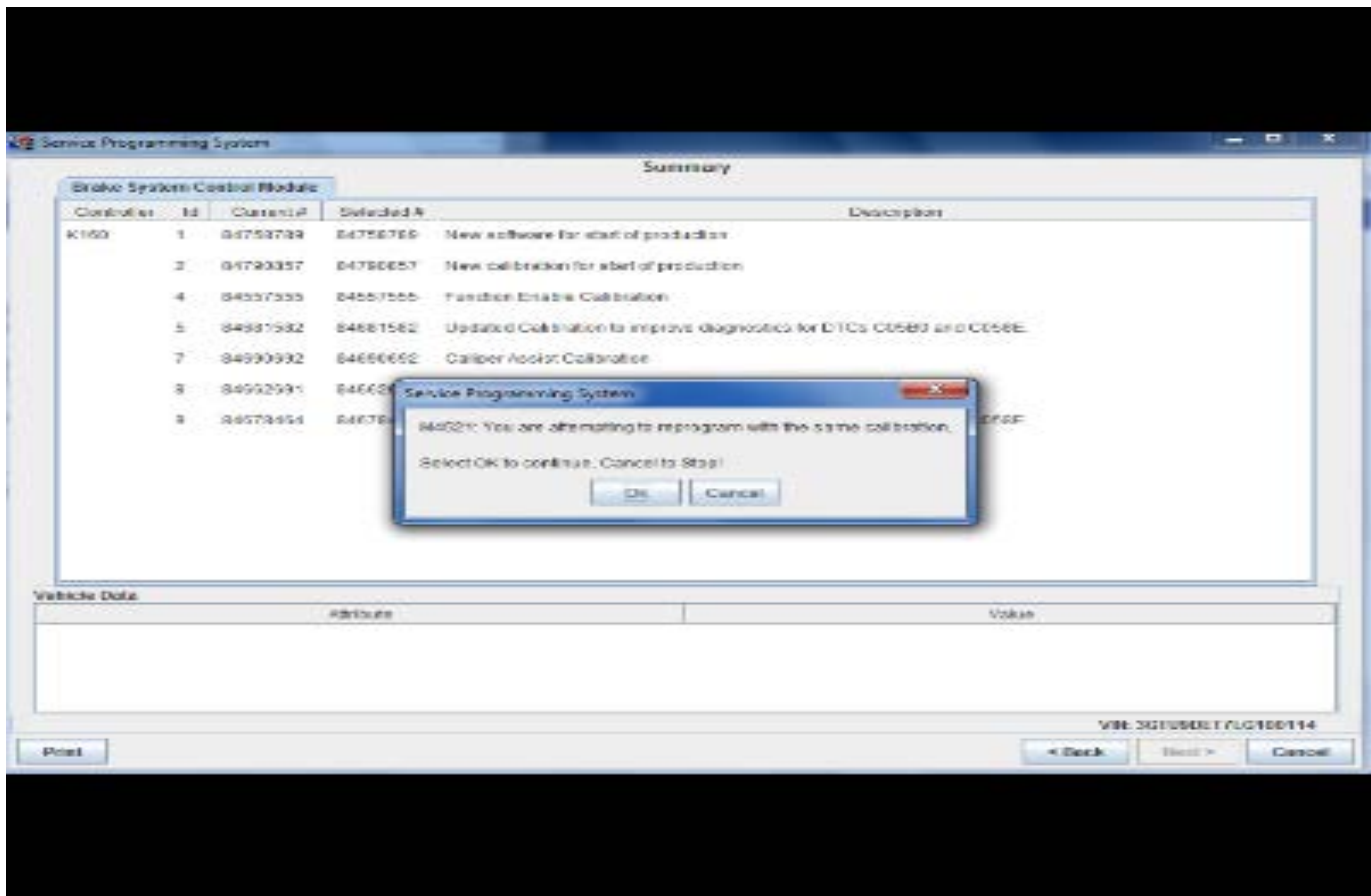
Service Procedure

Caution: Before downloading the update files, be sure the computer is connected to the internet through a network cable (hardwired). DO NOT DOWNLOAD or install the files wirelessly. If there is an interruption during programming, programming failure or control module damage may occur.

Important: Carefully read and follow the instructions below.

- Ensure the programming tool is equipped with the latest software and is securely connected to the data link connector. If there is an interruption during programming, programming failure or control module damage may occur.

- Stable battery voltage is critical during programming. Any fluctuation, spiking, over voltage or loss of voltage will interrupt programming. Install a GM Authorized Programming Support Tool to maintain system voltage. Refer to www.gmdesolutions.com for further information. If not available, connect a fully charged 12V jumper or booster pack disconnected from the AC voltage supply. DO NOT connect a battery charger.
- Turn OFF or disable systems that may put a load on the vehicles battery such as; interior lights, exterior lights (including daytime running lights), HVAC, radio, etc.
- Clear DTCs after programming is complete. Clearing powertrain DTCs will set the Inspection/Maintenance (I/M) system status indicators to NO.

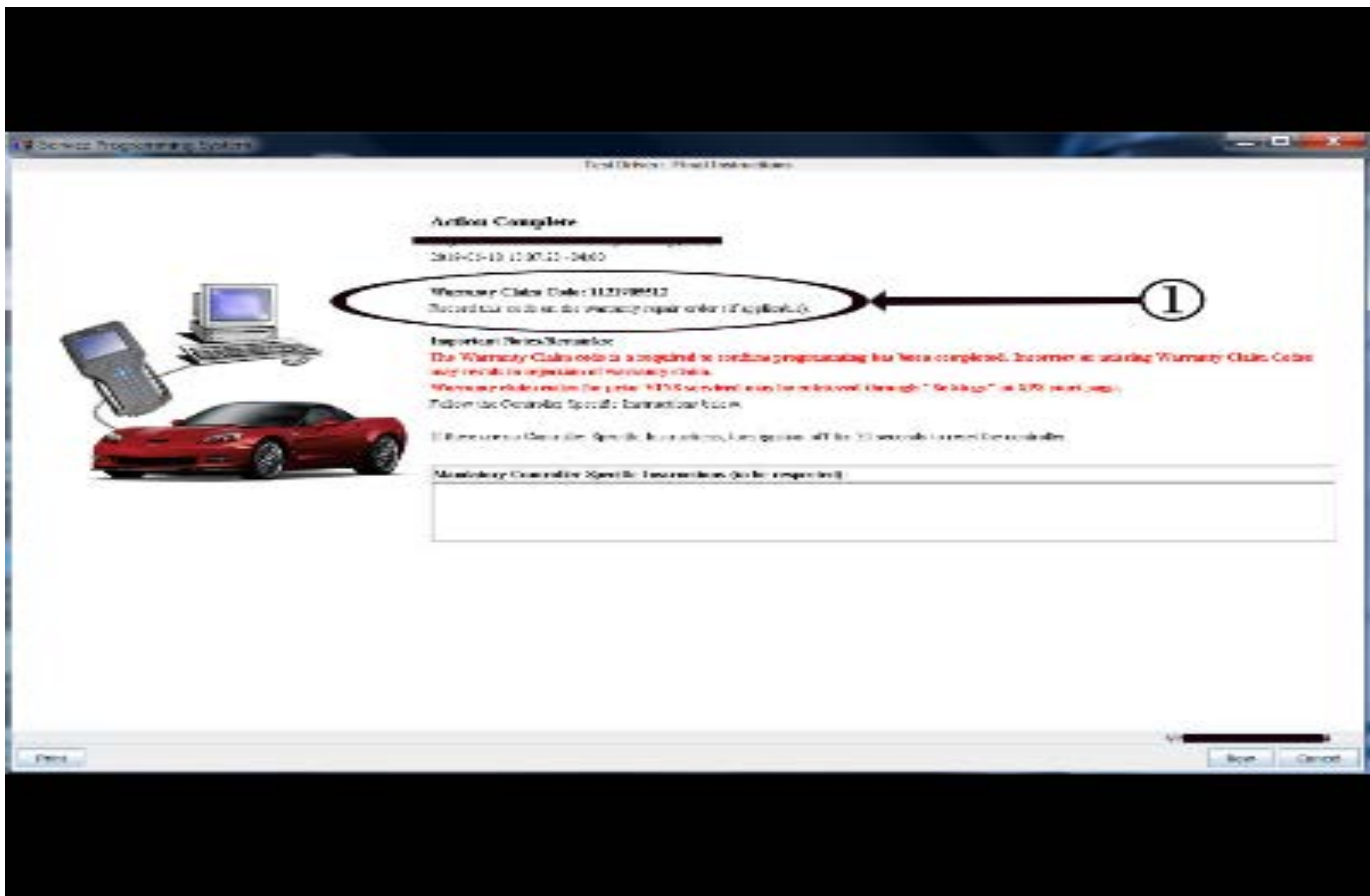


5431207

Important: If the Same Calibration/Software Warning is noted on the SPS screen, select OK and follow screen instructions. After a successful programming event, the WCC is located in the Service Programming System dialogue box of the SPS Summary screen. No further action is required. Refer to the Warranty Information section of this bulletin.

Note: Before proceeding with procedure, verify that the VIN **Does Not** apply to Service Update N202295800 by entering the VIN into IVH.

1. Reprogram the ECM. Refer to *K20 Engine Control Module: Programming and Setup* in SI. Modify as required (e.g., select x module from the controller screen). Then provide step-by-step instructions or refer to SI procedure.



5431209

Important: To avoid warranty transaction rejections, you **MUST** record the warranty claim code provided on the SPS Warranty Claim Code (WCC) screen on the job card. Refer to callout 1 above for the location of the WCC on the SPS screen

2. Record the SPS Warranty Claim Code on the job card for warranty transaction submission.

Parts Information

No parts are required for this repair.

Warranty Information

Important: Warranty coverage code E (Base Emission) and E2 (8 years/80,000 miles (U.S.) or 8 years/130,000 km (Canada) applies for this module programming event.

For vehicles repaired under the Emission coverage, use the following labor operation. Reference the Applicable Warranties section of Investigate Vehicle History (IVH) for coverage information.

| Labor Operation | Description | Labor Time |
|-----------------|---|------------|
| 2886678* | Engine Control Module Reprogramming with SPS for DTC P0365 and/or P0366 | 0.5 hr |

*This is a unique Labor Operation for bulletin use only.

Important: To avoid warranty transaction rejections, carefully read and follow the instructions below:

- The SPS Warranty Claim Code must be accurately entered in the “SPS Warranty Claim Code” field of the transaction.
- When more than one Warranty Claim Code is generated for a programming event, it is required to document all Warranty Claim Codes in the “Correction” field on the job card. Dealers must also enter one of the codes in the “SPS Warranty Claim Code” field of the transaction, otherwise the transaction will reject. It is best practice to enter the FINAL code provided by SPS.

Warranty Claim Code Information Retrieval

If the SPS Warranty Claim Code was not recorded on the Job Card, the code can be retrieved in the SPS system as follows:

1. Open TIS on the computer used to program the vehicle.
2. Select and start SPS.
3. Select Settings.
4. Select the Warranty Claim Code tab.

The VIN, Warranty Claim Code and Date/Time will be listed on a roster of recent programming events. If the code is retrievable, dealers should resubmit the transaction making sure to include the code in the SPS Warranty Claim Code field.

| | |
|-----------------|-------------------------|
| Version | 1 |
| Modified | Released March 03, 2020 |

