



# Service Bulletin

Bulletin No.: 20-NA-014

Date: March, 2020

## TECHNICAL

**Subject: Runs Rough Cold or Stall Condition Upon Cold Start and/or DTC P050D**

| Brand:    | Model:  | Model Year: |      | VIN: |    | Engine: | Transmission: |
|-----------|---------|-------------|------|------|----|---------|---------------|
|           |         | from        | to   | from | to |         |               |
| Chevrolet | Equinox | 2018        | 2019 |      |    | LYX     | All           |
| GMC       | Terrain | 2018        | 2019 |      |    |         |               |

|                                   |  |
|-----------------------------------|--|
| <b>Involved Region or Country</b> | North America and Middle East (Terrain Only)   |
| <b>Additional Options (RPOs)</b>  | Equipped with 4 Cylinder Turbo Engine (RPO LYX)  |
| <b>Condition</b>                  | Some customers may comment their vehicle runs rough cold and/or stalls on cold start, with a malfunction indicator lamp illuminated. After the vehicle warms up, the vehicle may run better.<br>During diagnosis a technician may find DTC P050D set/stored in the vehicles history. |
| <b>Cause</b>                      | This condition may be caused by a software anomaly.  |
| <b>Correction</b>                 | If you encounter a vehicle with the above concern, reprogram the Engine Control Module with the latest calibrations.   |

### Service Procedure

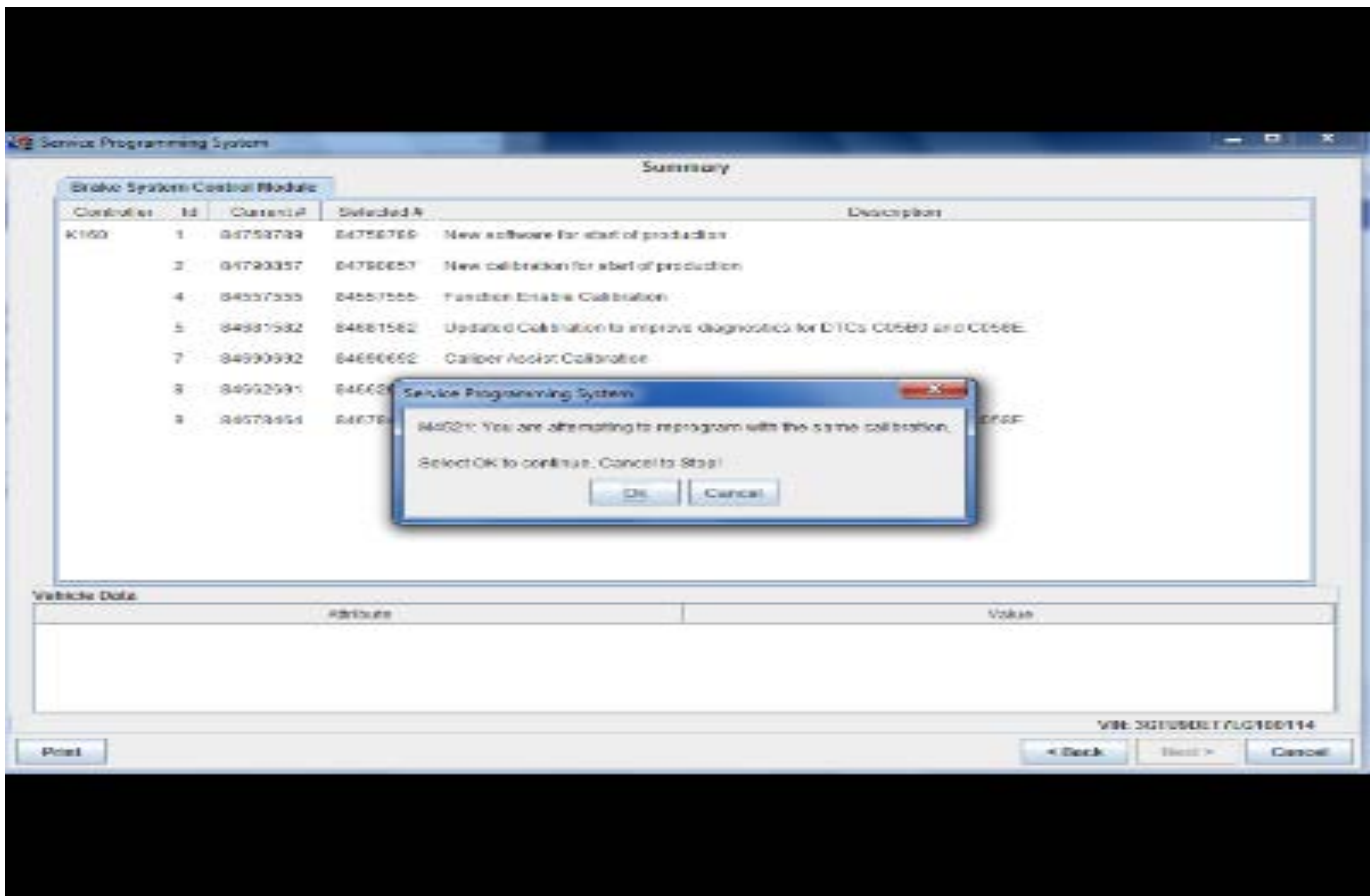
**Caution:** Before downloading the update files, be sure the computer is connected to the internet through a network cable (hardwired). DO NOT DOWNLOAD or install the files wirelessly. If there is an interruption during programming, programming failure or control module damage may occur.

Carefully read and follow the instructions below.

- Ensure the programming tool is equipped with the latest software and is securely connected to the data link connector. If there is an interruption during programming, programming failure or control module damage may occur.
- Stable battery voltage is critical during programming. Any fluctuation, spiking, over voltage or loss of voltage will interrupt programming. Install a GM Authorized

Programming Support Tool to maintain system voltage. Refer to [www.gmdesolutions.com](http://www.gmdesolutions.com) for further information. If not available, connect a fully charged 12 V jumper or booster pack disconnected from the AC voltage supply. DO NOT connect a battery charger.

- Turn OFF or disable systems that may put a load on the vehicles battery such as; interior lights, exterior lights (including daytime running lights), HVAC, radio, etc.
- Clear DTCs after programming is complete. Clearing powertrain DTCs will set the Inspection/Maintenance (I/M) system status indicators to NO

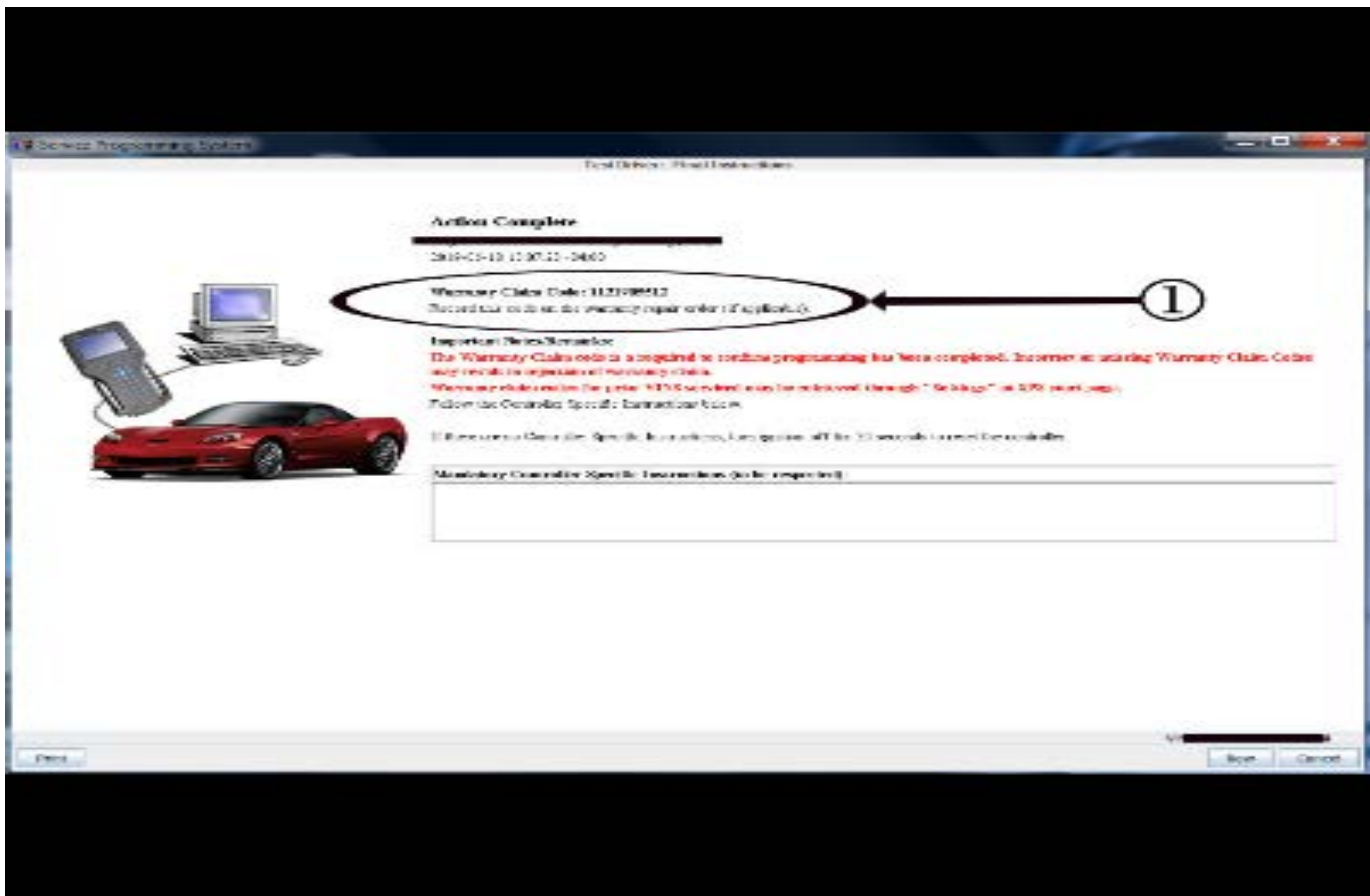


5431207

**Important:** If the Same Calibration/Software Warning is noted on the SPS screen, select OK and follow screen instructions. After a successful programming event, the WCC is located in the Service Programming System dialogue box of the SPS Summary screen. No further action is required. Refer to the Warranty section of the bulletin.

1. Reprogram the Engine Control Module with the latest calibrations. Refer to *K20 Engine Control Module: Programming and Setup* in SI.

**Important:** To avoid warranty transaction rejections, you **MUST** record the warranty claim code provided on the SPS Warranty Claim Code (WCC) screen on the job card. Refer to callout 1 above for the location of the WCC on the SPS screen.



5431209

2. Record SPS Warranty Claim Code on job card for warranty transaction submission.
3. If the condition is not corrected by reprogramming, continue diagnosis referring to SI.

### Parts Information

No parts are required for this repair.

### Warranty Information

For vehicles repaired under the Emission coverage, use the following labor operation. Reference the Applicable Warranties section of Investigate Vehicle History (IVH) for coverage information.

| Labor Operation | Description   | Labor Time |
|-----------------|---|------------|
| 2886648*        | Engine Control Module Reprogramming with SPS Due to Cold Run Concerns | 0.3        |

\*This is a unique Labor Operation for bulletin use only.

**Important:** To avoid warranty transaction rejections, carefully read and follow the instructions below:

- The SPS Warranty Claim Code must be accurately entered in the “SPS Warranty Claim Code” field of the transaction.
- When more than one Warranty Claim Code is generated for a programming event, it is required to document all Warranty Claim Codes in the “Correction” field on the job card. Dealers must also enter one of the codes in the “SPS Warranty Claim Code” field of the transaction, otherwise the transaction will reject. It is best practice to enter the FINAL code provided by SPS.

**Warranty Claim Code Information Retrieval**

If the SPS Warranty Claim Code was not recorded on the Job Card, the code can be retrieved in the SPS system as follows:

1. Open TIS on the computer used to program the vehicle.
2. Select and start SPS.
3. Select Settings.
4. Select the Warranty Claim Code tab.

The VIN, Warranty Claim Code and Date/Time will be listed on a roster of recent programming events. If the code is retrievable, dealers should resubmit the transaction making sure to include the code in the SPS Warranty Claim Code field.

|                 |  |
|-----------------|--|
| <b>Version</b>  | 2  |
| <b>Modified</b> | Released January 23, 2020<br>Revised March 11, 2020 — Added Middle East to Involved Regions. |

