



NUMBER: 09-003-20 REV. B

GROUP: 09 - Engine

DATE: March 27, 2020

This bulletin is supplied as technical information only and is not an authorization for repair. No part of this publication may be reproduced, stored in a retrieval system, or transmitted, in any form or by any means, electronic, mechanical, photocopying, or otherwise, without written permission of FCA US LLC.

This bulletin supersedes Service Bulletin 09-003-20 REV. A, dated March 12, 2020, which should be removed from your files. All revisions are highlighted with **asterisks**** and include additional models, sales codes, updated build date, parts table and LOPs.**

This Service Bulletin is also being released as Rapid Response Transmittal (RRT) 20-012, dated February 14, 2020. All applicable Sold and Un-Sold RRT VINs have been loaded. To verify this RRT service action is applicable to the vehicle, use VIP or perform a VIN search in DealerCONNECT/Service Library. All repairs are reimbursable within the provisions of warranty.

SUBJECT:

Inspect Throttle Body Assembly

OVERVIEW:

This bulletin involves inspecting the Julian date on the throttle body and possibly replacing it.

MODELS:

**2019	(D2)	RAM 3500 Pickup
2019	(DD)	RAM 3500 Cab Chassis
2019	(DP)	RAM 4500/5500 Cab Chassis
2019	(DS)	RAM 1500 Pickup
2019	(DX)	RAM Truck (Mexico)**
2020	(KL)	Jeep Cherokee
2020	(MP)	Jeep Compass
2019	(DJ)	RAM 2500 Pickup
2019	(LD)	Dodge Charger

NOTE: This bulletin applies to vehicles within the following markets/countries: North America, APAC, EMEA and LATAM.

NOTE: This bulletin applies to the following vehicles:

- ****D2 vehicles built on or after September 06, 2019 (MDH 0906XX) on or before September 20, 2019 (MDH 0920XX) equipped with a 6.4L Heavy Duty V8 Hemi With MDS (Sales Code ESA).**
- **DD and DP vehicles built on or after September 06, 2019 (MDH 0906XX) on or before September 20, 2019 (MDH 0920XX) equipped with a 6.4L V8 Heavy Duty Hemi Engine (Sales Code ESB).**
- **DS vehicles built on or after September 06, 2019 (MDH 0906XX) on or before September 20, 2019 (MDH 0920XX) equipped with a 5.7L V8 Hemi MDS VVT Engine (Sales Code EZH).**

- DX vehicles built on or after September 06, 2019 (MDH 0906XX) on or before September 20, 2019 (MDH 0920XX) equipped with a 6.4L V8 Heavy Duty Hemi MDS Engine (Sales Code ESB) or a 5.7L V8 Hemi MDS VVT Engine (Sales Code EZC).**
- DJ vehicles built on or after **September 04, 2019 (MDH 0904XX)** on or before September 20, 2019 (MDH 0920XX) equipped with a 6.4L Heavy Duty V8 Hemi With MDS (Sales Code ESA).
- KL and MP vehicles built on or after **September 06, 2019 (MDH 0906XX)** on or before September 20, 2019 (MDH 0920XX) equipped with a 2.4L I4 Zero EVAP M-AIR Engine W/ESS (Sales Codes EDE, **EDD or ED6**).
- LD vehicles built on or after September 06, 2019 (MDH 0906XX) on or before September 21, 2019 (MDH 0921XX) equipped with a 5.7L V8 HEMI MDS VVT Engine (Sales Code EZH).

SYMPTOM/CONDITION:

Customers may experience a Malfunction Indicator Lamp (MIL) illumination. Upon further investigation the technician may find that the following Diagnostic Trouble Code (DTC) has been set:

- P2100 - Electronic Throttle Control Motor Circuit/Open - Bank 1.

The customer may also describe the following:

- The vehicle is in limp home mode.

DIAGNOSIS:

If a customer's VIN is listed in VIP or your RRT VIN list, perform the repair. **This RRT only applies to vehicles on the RRT VIN list.**

1. Inspect the Julian date on the throttle body assembly.

NOTE: It may be necessary to raise/remove the engine cover or air cleaner duct in order to see the Julian date. Refer to the detailed service procedures available in DealerCONNECT/Service Library.

2. Referencing the figure below, is the four digit stamped Julian date on the front of the throttle body one of the following: **(Sales Codes ESA and EZH): On or between 2419 - 2549 with an S1 on the line above the date code or (Sales Code EDE): On or between 2419 - 2549 (Fig. 1) ?**
 - YES>>> Proceed to [Step 3](#) of the Diagnostic Procedure.
 - NO>>> An **S2** is present. This bulletin has been completed, use LOP (14-25-01-95) to close the active RRT.
3. Is there a **green dot near the bar code also marked on the housing (Fig. 1) ?**
 - YES>>> This bulletin has been completed, use LOP (14-25-01-95) to close the active RRT.
 - NO>>> Proceed to [Step 1](#) of the Repair Procedure.

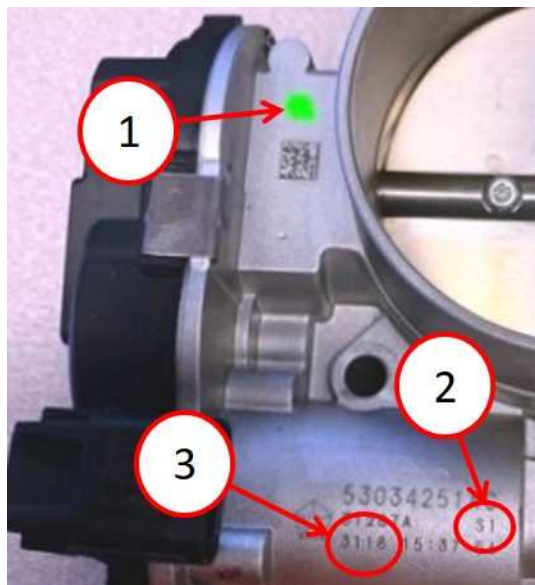


Fig. 1
Julian Date, S1 And Green Dot Locations

- 1 - Green Dot
2 - S1 On Stamping (Sales Codes ESA And EZH)
3 - Julian Date

PARTS REQUIRED:

Qty.	Part No.	Description
1 (AR)	53034251AD	Throttle Body Control (**D2, DD, DP, DS DX** DJ and LD Only)
1 (AR)	04891970AC	Throttle Body Control (KL and MP Only)
1 (AR)	04627634AA	Throttle Body Seal (DJ Only)
1 (AR)	04627591AA	Throttle Body Seal (LD Only)
1 (AR)	05281991AA	Throttle Body Seal (KL and MP Only)
1 (AR)	68359029AA	Throttle Body Seal (KL and MP Only)

REPAIR PROCEDURE:

CAUTION! Ensure any Electronic Throttle Control (ETC) relearn routines have been performed after replacement of the throttle body. Failure to do so may result in the vehicle not operating correctly.

- Replace the throttle body assembly and seal:
 - For **DJ, D2, DD, DS and DP vehicles**, refer to the detailed service procedures available in DealerCONNECT/Service Library under: Service Info>09 - Engine, 6.4L/Fuel Injection/Throttle Body/Removal and Installation.
 - For **LD, KL and MP vehicles**, refer to the detailed service procedures available in DealerCONNECT/Service Library under: Service Info>14 - Fuel System/Fuel Injection, Gas/Throttle Body/Removal and Installation.
- Clear any DTCs that may have been set.

POLICY:

Reimbursable within the provisions of the warranty.

TIME ALLOWANCE:

Labor Operation No:	Description	Skill Category	Amount
14-25-01-95	Throttle Body (All vehicles) - Inspect (2 - Skilled)	1 - Engine Repair and Performance	0.2 Hrs.
**14-25-01-96	Throttle Body Assembly (DS and DX vehicles with Sales Code EZC) - Inspect and Replace (2 - Skilled)	1 - Engine Repair and Performance	0.4 Hrs.
14-25-01-96	Throttle Body Assembly (DD, DP and DX vehicles with Sales Code ESB) - Inspect and Replace (2 - Skilled)	1 - Engine Repair and Performance	0.4 Hrs.**
14-25-01-96	Throttle Body Assembly (**D2** and DJ vehicles with Sales Code ESA) - Inspect and Replace (2 - Skilled)	1 - Engine Repair and Performance	0.4 Hrs.
14-25-01-96	Throttle Body Assembly (MP vehicles with Sales Codes **ED6,** EDE and EDD) - Inspect and Replace (2 - Skilled)	1 - Engine Repair and Performance	0.6 Hrs.
14-25-01-96	Throttle Body Assembly (KL vehicles with Sales Codes EDE and EDD) - Inspect and Replace (2 - Skilled)	1 - Engine Repair and Performance	0.4 Hrs.
14-25-01-96	Throttle Body Assembly (**DS** and LD vehicles with Sales Code EZH) - Inspect and Replace (2 - Skilled)	1 - Engine Repair and Performance	0.3 Hrs.

FAILURE CODE:

ZZ	Service Action
----	----------------