



SIB 61 02 20

2020-03-18

KNOCKING NOISE FROM WASHER FLUID RESERVOIR

MODEL

E-Series	Model Description	Production Date
F97	X3 M Sports Activity Vehicle	August 1 st , 2017 to December 31 st , 2021
F98	X4 M Sports Activity Coupe	
G01	X3 Sports Activity Vehicle	
G02	X4 Sports Activity Coupe	

SITUATION

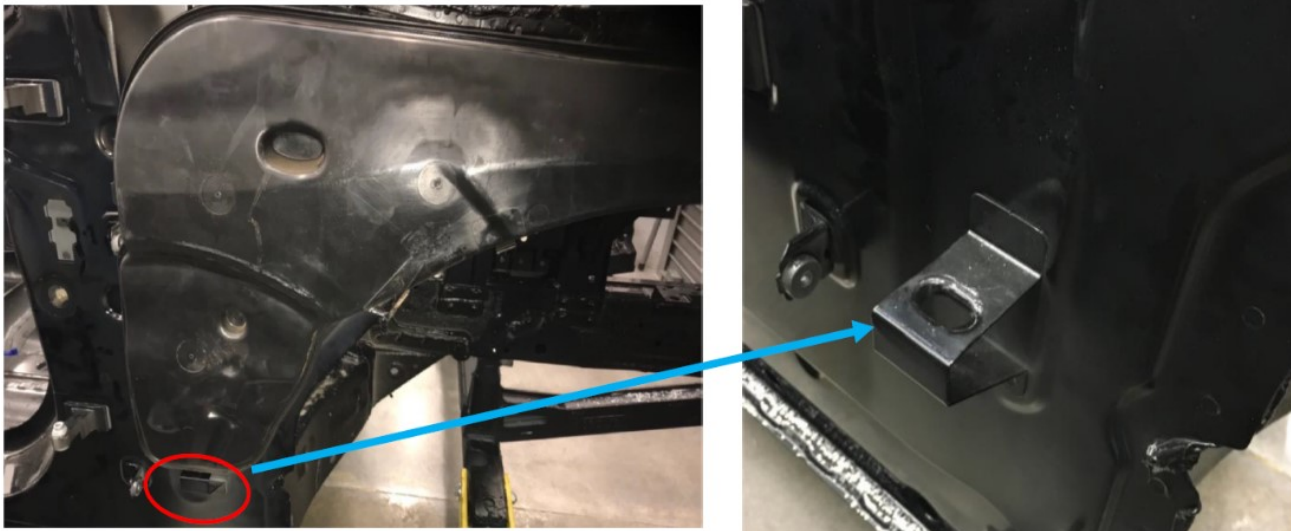
When driving over uneven pavement or cobblestones, a knocking noise is present from the passenger side front area (A pillar). Once the vehicle is driven on a flat, even surface; the noise is no longer present.

CAUSE

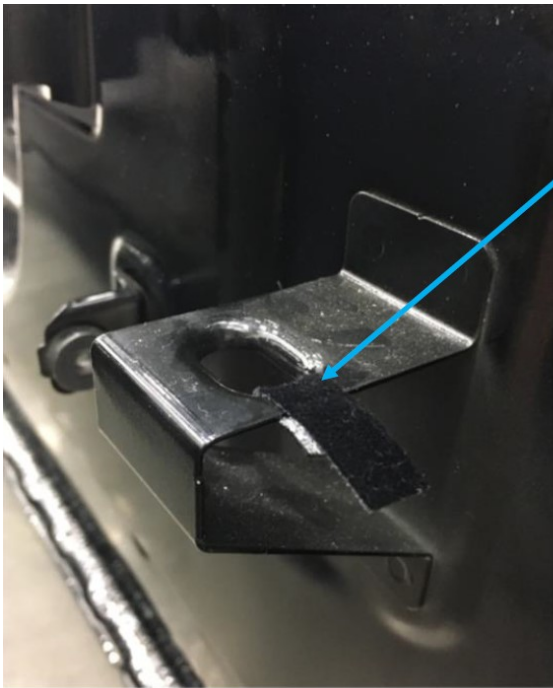
Washer fluid reservoir movement caused by mounting bracket clearance.

PROCEDURE

1. Remove the washer fluid reservoir as per repair instructions **61 71 063**.
2. Access the lower mounting bracket.



3. Wrap the lower mounting bracket with felt tape as shown.



4. Reinstall the washer fluid reservoir and verify the repair.

PARTS INFORMATION

Part Number	Description	Quantity
51 45 2 353 024	Set felt strip self-adhesive	Sublet as needed

WARRANTY INFORMATION

Covered under the terms of the BMW New Vehicle Limited Warranty for Passenger Cars and Light Trucks.

Defect Code:	6166013700	Washer fluid reservoir windscreen washer system loose
Labor Operation	Description	Labor Allowance
61 71 063	Removing and installing the wash fluid reservoir for the washer system (Main work)	Refer to AIR
Or:		
61 71 563	Removing and installing the wash fluid reservoir for the washer system (Plus work)	Refer to AIR
And:		
51 00 001	Work time to wrap the lower mounting bracket with felt tape	1 FRU

If you are using a Main labor code for another repair, use the Plus code labor operation 61 71 563 instead of 61 71 063.

Refer to AIR for the corresponding flat rate unit (FRU) allowances.

Work time labor operation code 51 00 001 is not considered a Main labor operation. Also, since the work time FRU allowance to be claimed is specified, a separate punch time is not required. However; it still requires an explanation on the repair order and in the claim comments section.

And, as needed:

Sublet – Bulk Materials (RO and Claim Comments Required)

Sublet Code 4	See the sublet reimbursement calculations below	Reimbursement for the repair-related bulk material (Do not use the BMW part numbers for claim submission)
----------------------	---	---

Sublet reimbursement calculation for claiming the applicable repair-related bulk materials (BMW part numbers) is at the dealer net price amount for the “quantity used” plus your center’s handling.

Enter this material cost in sublet and itemize the amount on the repair order and in claim comment section.