

GLOBAL SAFETY FIELD INVESTIGATIONS
DCS5367
URGENT - DISTRIBUTE IMMEDIATELY

Date: March 28, 2020

Subject: N192275630-03 – Customer Satisfaction Program
Brake Assist Feature - Frontview Camera Reprogramming and
Configuration
Revised Warranty Information and Service Procedure

Models: 2019 Chevrolet Silverado 1500 (New Model)
2019 GMC Sierra 1500 (New Model)

To: All General Motors Dealers

This bulletin is being revised to update the service procedure and the warranty information table. Please discard all previous copies of bulletin N192275630.

END OF MESSAGE
GLOBAL SAFETY FIELD INVESTIGATIONS

Customer Satisfaction Program

N192275630 Brake Assist Feature - Frontview Camera Reprogramming and Configuration



Release Date: March 2020

Revision: 03

Revision Description: This bulletin is being revised to update the service procedure and the warranty information table. Please discard all previous copies of bulletin N192275630.

Attention: This program is in effect until January 31, 2022.

Caution: To avoid module performance issues and setting DTCs, carefully read the programming instructions in SI. Programming the frontview camera is a three-step process. Module programming, module configuration and module calibration are required to successfully program the front view camera. Use GDS2 to perform the calibration portion of the programming event.

Make	Model	Model Year		RPO	Description
		From	To		
Chevrolet	Silverado 1500 (New Model)	2019	2019		
GMC	Sierra 1500 (New Model)				

Involved vehicles are marked "open" on the Investigate Vehicle History screen in GM Global Warranty Management system. This site should always be checked to confirm vehicle involvement prior to beginning any required inspections and/or repairs.

Condition	Certain 2019 model year Chevrolet Silverado and GMC Sierra vehicles, may have a condition in which the electronic brake control module is less likely to activate the optional integrated brake assist. Normal braking capability functions as intended.
Correction	Dealers are to reprogram the frontview camera by performing the SPS Programming/SPS Configuration/GDS2 Learn. Caution: To avoid module performance issues and setting DTCs, carefully read the programming instructions in SI. Programming the frontview camera is a three-step process. Module programming, module configuration and module calibration are required to successfully program the front view camera. Use GDS2 to perform the calibration portion of the programming event.

Parts

No parts are required for this repair.

Warranty Information

Labor Operation	Description	Labor Time	Trans. Type	Net Item
9104798*	Verified Module Software or Calibration Level: Module Is Programmed with Same Level Software or Calibration	0.2	ZFAT	N/A
9104799*	Frontview Camera Reprogramming with SPS (Includes Learn)	0.7		

* Important: To avoid warranty transaction rejections, carefully read and follow the instructions below:

- The SPS Warranty Claim Code must be accurately entered in the "SPS Warranty Claim Code" field of the transaction.
- When more than one Warranty Claim Code is generated for a programming event, it is required to document all Warranty Claim Codes in the "Correction" field on the job card. Dealers must also enter one of the codes in the "SPS Warranty Claim Code" field of the transaction, otherwise the transaction will reject. It is best practice to enter the FINAL code provided by SPS.

Warranty Claim Code Information Retrieval

If the SPS Warranty Claim Code was not recorded on the Job Card, the code can be retrieved in the SPS system as follows:

- Open TIS on the computer used to program the vehicle.
- Select and start SPS.
- Select Settings.
- Select the Warranty Claim Code tab.

The VIN, Warranty Claim Code and Date/Time will be listed on a roster of recent programming events. If the code is retrievable, dealers should resubmit the transaction making sure to include the code in the SPS Warranty Claim Code field.

Customer Satisfaction Program

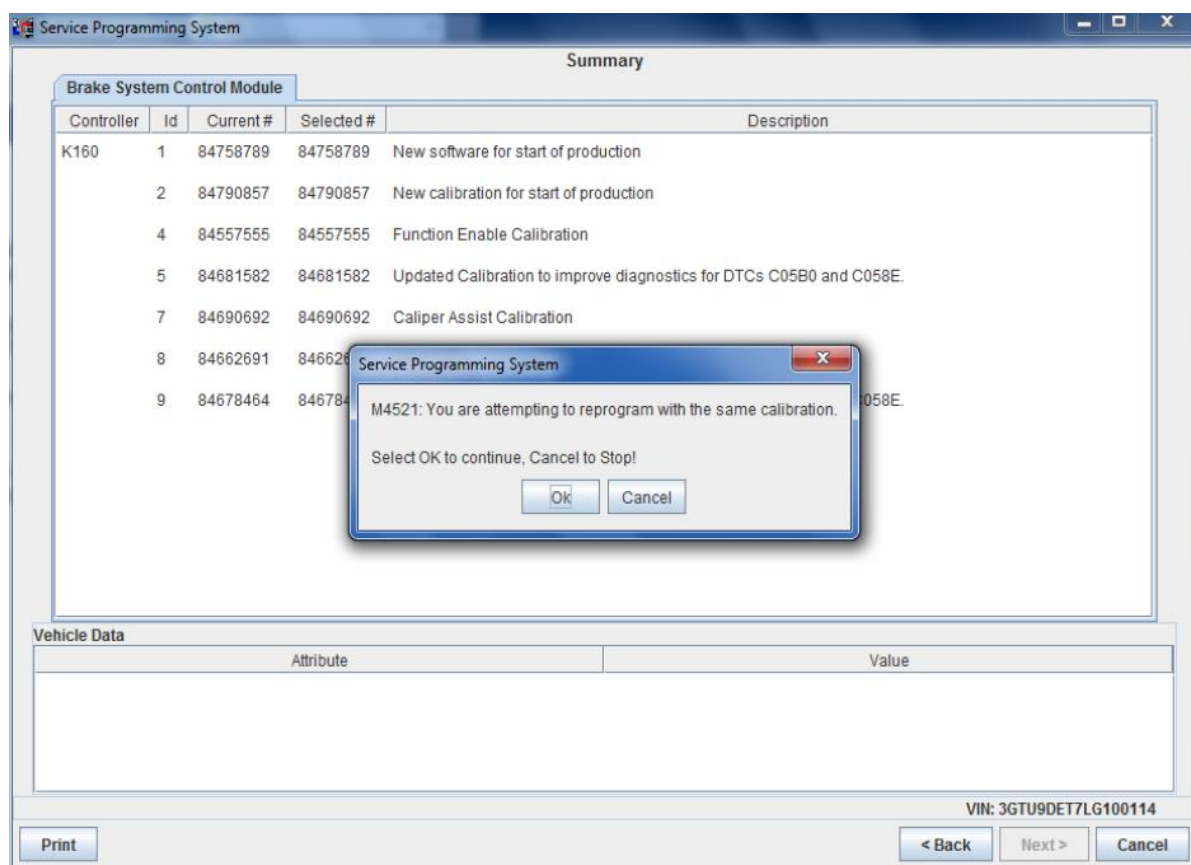
N192275630 Brake Assist Feature - Frontview Camera Reprogramming and Configuration



Service Procedure

Note: Carefully read and follow the instructions below.

- Ensure the programming tool is equipped with the latest software and is securely connected to the data link connector. If there is an interruption during programming, programming failure or control module damage may occur.
- Stable battery voltage is critical during programming. Any fluctuation, spiking, over voltage or loss of voltage will interrupt programming. Install a GM Authorized Programming Support Tool to maintain system voltage. Refer to www.gmdesolutions.com for further information. If not available, connect a fully charged 12 V jumper or booster pack disconnected from the AC voltage supply. DO NOT connect a battery charger.
- Turn OFF or disable systems that may put a load on the vehicles battery such as; interior lights, exterior lights (including daytime running lights), HVAC, radio, etc.
- Clear DTCs after programming is complete. Clearing powertrain DTCs will set the Inspection/Maintenance (I/M) system status indicators to NO.



5431207

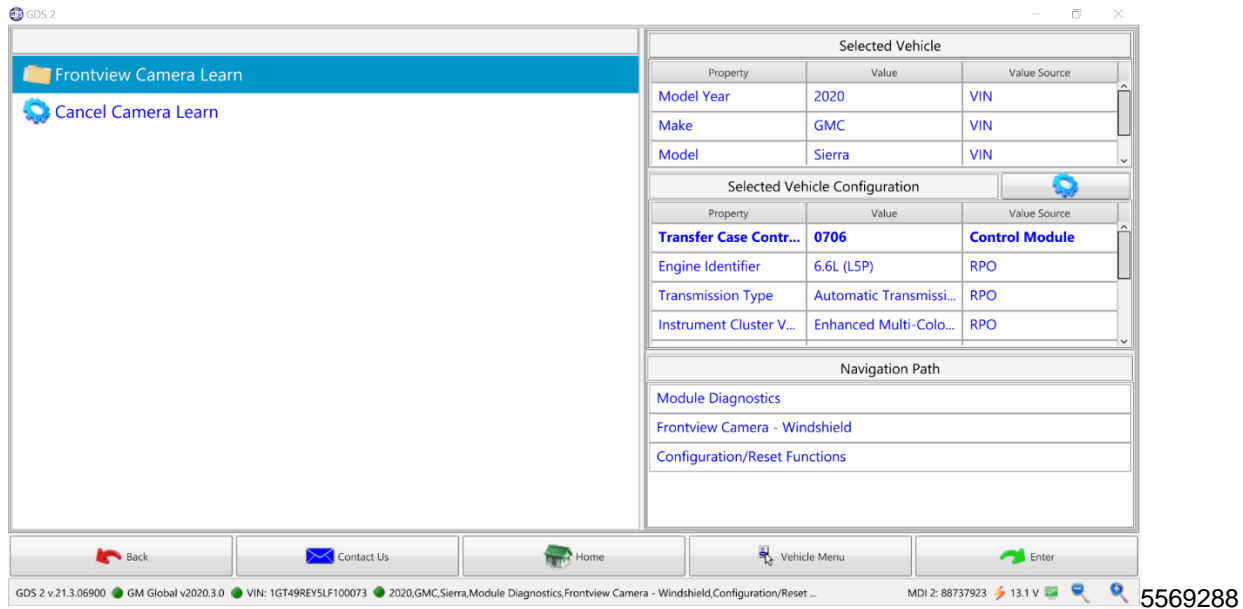
Caution: To avoid module performance issues and setting DTCs, carefully read the programming instructions in SI. Programming the frontview camera is a three-step process. Module programming, module configuration and module calibration are required to successfully program the front view camera. Use GDS2 to perform the calibration portion of the programming event.

Important: If the Same Calibration/Software Warning is noted on the SPS screen, select OK and follow screen instructions. After a successful programming event, the WCC is located in the Service Programming System dialogue box of the SPS Summary screen. No further action is required. Refer to the Warranty section of the bulletin.

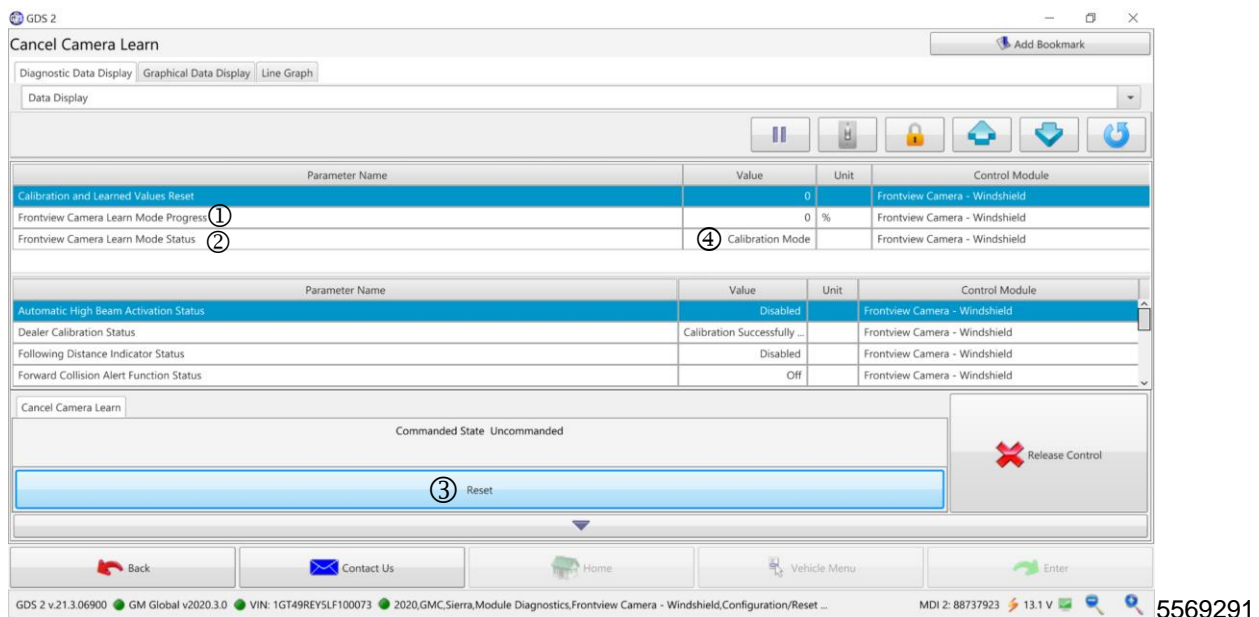
1. Using GDS2, reset the frontview camera following the steps below:

Customer Satisfaction Program

N192275630 Brake Assist Feature - Frontview Camera Reprogramming and Configuration



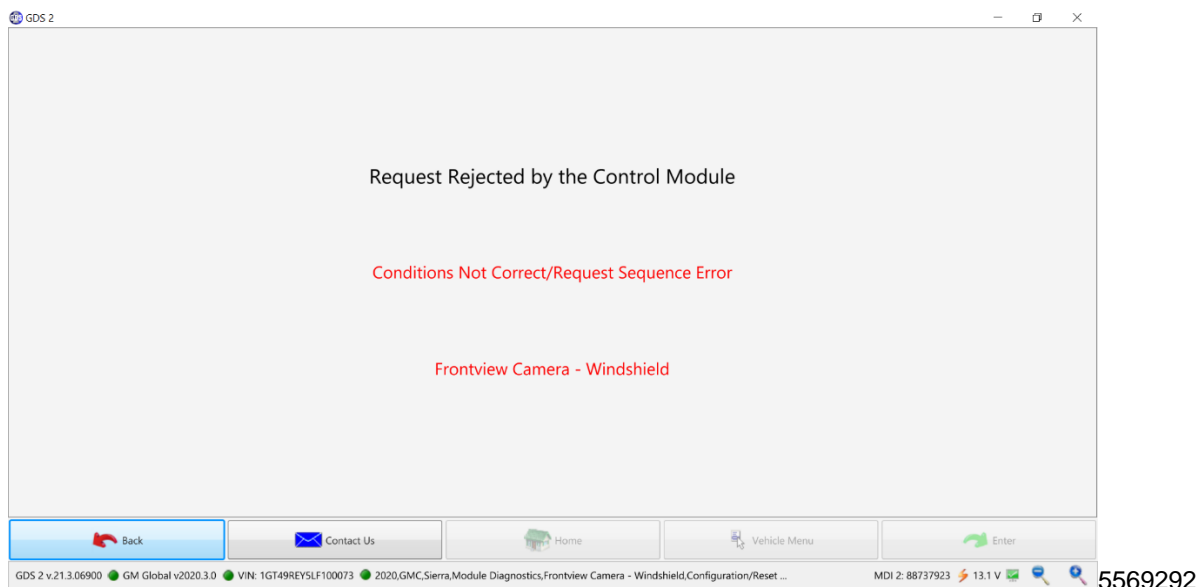
- 1.1. Navigate to Module Diagnostics>Frontview Camera Module >Configuration/Reset Functions.
- 1.2. There will be 2 selections, Frontview Camera Learn and Cancel Camera Learn-Select Cancel Camera Learn.



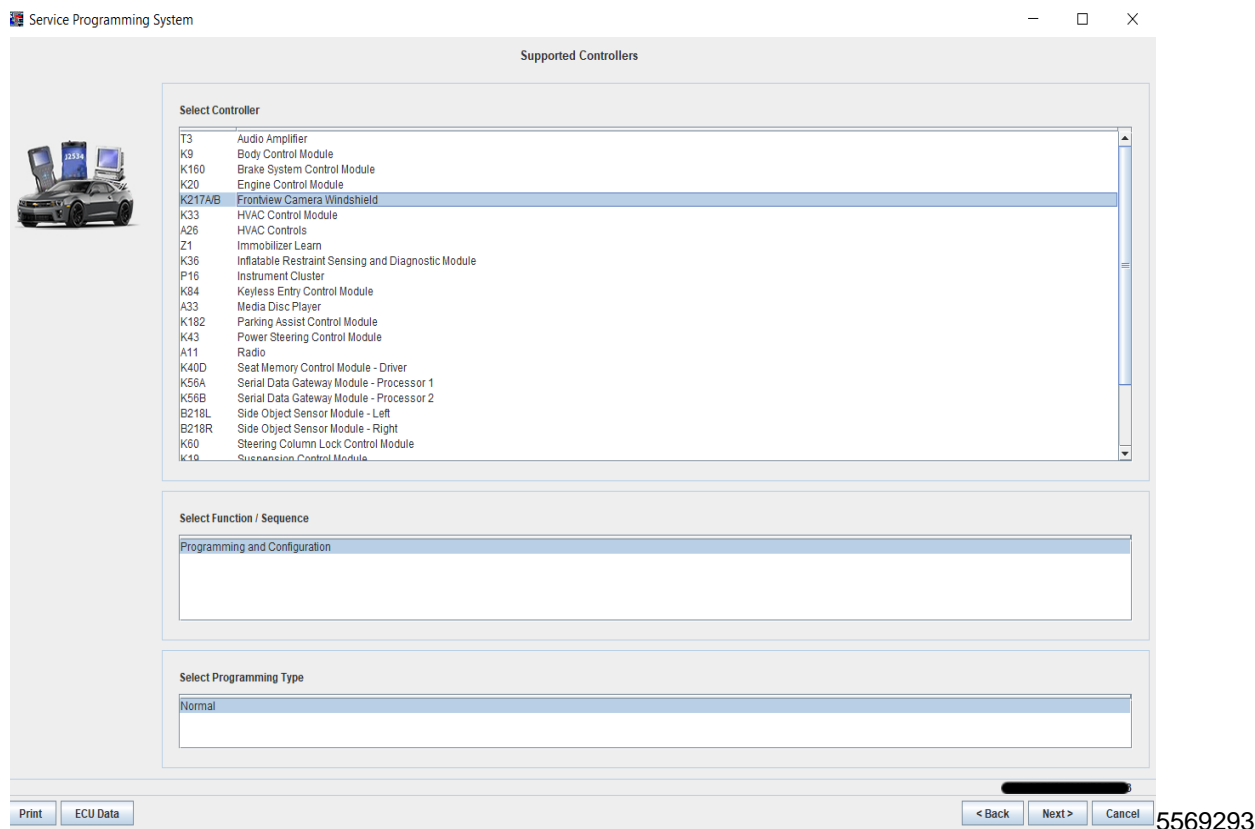
- 1.3. You should see a Data Display with two Watch List parameters at the top “Frontview Camera Learn Mode Progress” (1) “Frontview Camera Learn Mode Status” (2) and a Reset Button (3) at the Bottom.
- 1.4. In the “Frontview Camera Learn Mode Status” value (4), you will see one of two values:
 - “Calibration Mode” – if the value in (4) is “Calibration Mode”, select the Reset button (3), exit and proceed to step 2, “Reprogram Frontview Camera”.
 - “Not In Calibration Mode” – if the value in (4) is “Not In Calibration Mode”, exit and proceed to step 2, “Reprogram Frontview Camera”.

Customer Satisfaction Program

N192275630 Brake Assist Feature - Frontview Camera Reprogramming and Configuration



1.5. In the event if you receive this screen after Selecting Reset Button then the Camera was not in learn mode. To ensure this, confirm if DTC B0395D is in History. If so, Exit GDS2 and continue to step 2.



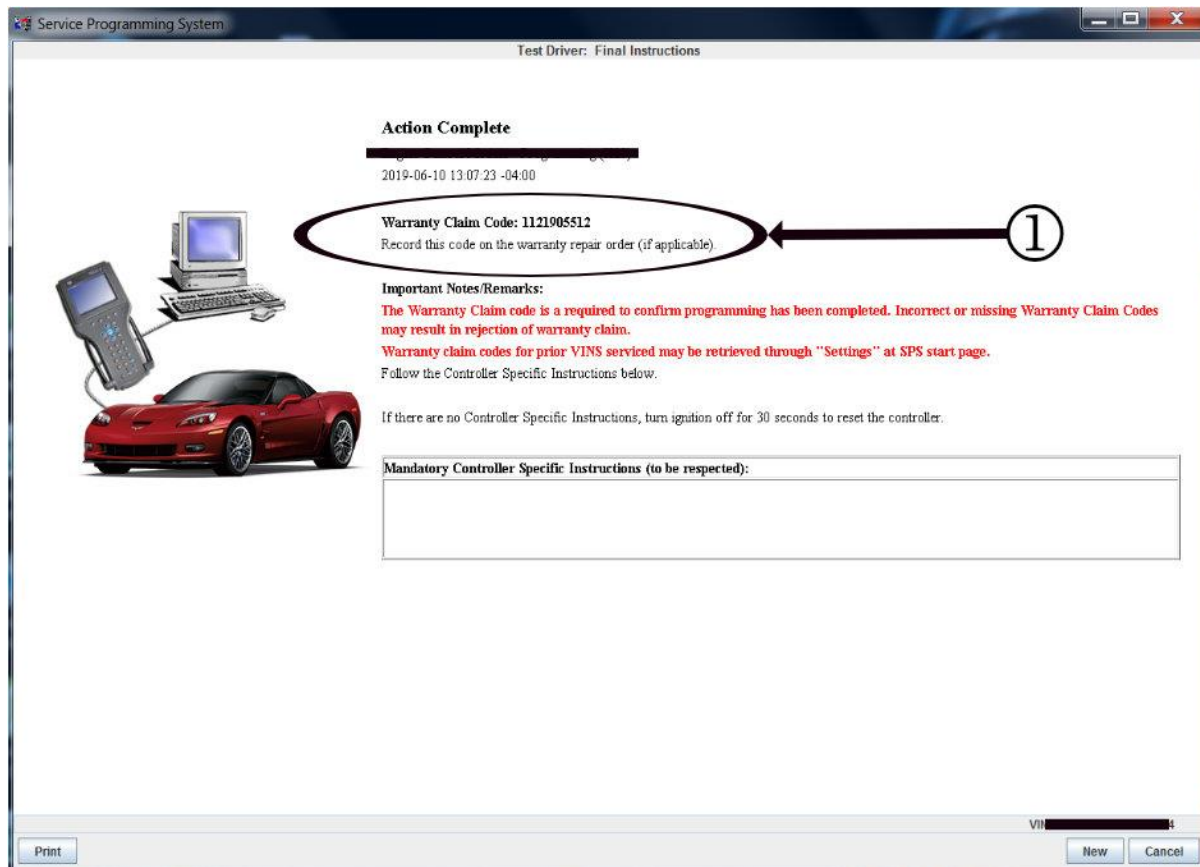
2. Reprogram the frontview camera. Select K217A/B Frontview Camera Windshield under “Select Controller” and then Programming and Configuration under “Select Function/Sequence” and follow on screen instructions.

Note: After programming, a current DTC may be set in the B174W Frontview Camera – Windshield that is unable to be cleared. This is normal and an indicator that the B174W Frontview Camera – Windshield is in learn mode. The frontview camera must be relearned.

3. Using GDS2, relearn the frontview camera. Refer to *Front View Camera Module Learn* in SI.

Customer Satisfaction Program

N192275630 Brake Assist Feature - Frontview Camera Reprogramming and Configuration



5431209

Important: To avoid warranty transaction rejections, you **MUST** record the warranty claim code provided on the SPS Warranty Claim Code (WCC) screen on the job card. Refer to callout 1 above for the location of the WCC on the SPS screen.

- Record SPS Warranty Claim Code on job card for warranty transaction submission.

Dealer Responsibility

All new, used, GM Certified Used, courtesy transportation vehicles, dealer shuttle vehicles, etc. in dealers' possession and subject to this program must be held and inspected/repaid per the service procedure of this bulletin before customers take possession of these vehicles. Involved vehicles must be held and not delivered to customers, dealer-traded, released to auction, used for demonstration, or any other purpose.

All GM Certified Used vehicles currently in the dealers' inventory within the Certified Pre-Owned Inventory System (CPOIS) will be de-certified and must be held and remedied per the service procedure in this bulletin. Upon submitting an accepted/paid warranty transaction in the Global Warranty Management (GWM) system, the vehicle can be re-certified for sale within the CPOIS system, or once again be used in the CTP program.

Dealers are to service all vehicles subject to this program at no charge to customers, regardless of mileage, age of vehicle, or ownership, through January 31, 2022. Customers who have recently purchased vehicles sold from your vehicle inventory, and for which there is no customer information indicated on the involved vehicle listing, are to be contacted by the dealer. Arrangements are to be made to make the required correction according to the instructions contained in this bulletin. A copy of the customer letter is provided in this bulletin for your use in contacting customers. Program follow-up cards should not be used for this purpose, since the customer may not as yet have received the notification letter.

In summary, whenever a vehicle subject to this program enters your vehicle inventory or is in your facility for service through January 31, 2022, you must take the steps necessary to be sure the program correction has been made before selling or releasing the vehicle.

Customer Satisfaction Program

N192275630 Brake Assist Feature - Frontview Camera Reprogramming and Configuration



Dealer Reports

For dealers with involved vehicles, a listing with involved vehicles has been prepared and will be provided to U.S. and Canadian dealers through the GM GlobalConnect Recall Reports or sent directly to export dealers. The listing may contain customer names and addresses obtained from Motor Vehicle Registration Records. The use of such motor vehicle registration data for any purpose other than follow-up necessary to complete this program is a violation of law in several states/provinces/countries. Accordingly, you are urged to limit the use of this report to the follow-up necessary to complete this program.

Courtesy Transportation – For USA & Canada

Courtesy transportation is available for customers whose vehicles are involved in a product program and still within the warranty coverage period. See General Motors Service Policies and Procedures Manual, Sections 1.4 and 6.1.10, for courtesy transportation program details.

Customer Notification

USA & Canada - General Motors will notify customers of this program on their vehicle (see copy of customer letter included with this bulletin).

Export - Letters will be sent to known owners of record located within areas covered by the US National Traffic and Motor Vehicle Safety Act. For owners outside these areas, dealers should notify customers using the attached sample letter.

GM bulletins are intended for use by professional technicians, NOT a "do-it-yourselfer". They are written to inform these technicians of conditions that may occur on some vehicles, or to provide information that could assist in the proper service of a vehicle. Properly trained technicians have the tools, equipment, safety instructions, and know-how to do a job properly and safely. If a condition is described, DO NOT assume that the bulletin applies to your vehicle, or that your vehicle will have that condition. See your dealer for information on whether your vehicle may benefit from the information.



**We Support
Voluntary Technician
Certification**

Customer Satisfaction Program

N192275630 Brake Assist Feature - Frontview Camera Reprogramming and Configuration



January 2020

This notice applies to your vehicle, **VIN:** _____

Dear General Motors Customer:

We have learned that your 2019 model year Chevrolet Silverado or GMC Sierra may have a condition in which the electronic brake control module is less likely to activate the optional integrated brake assist. Normal braking capability functions as intended.

Your satisfaction with your Silverado or Sierra is very important to us, so we are announcing a program to prevent this condition or, if it has occurred, to fix it.

What We Will Do: Your GM dealer will reprogram the front camera module. This service will be performed for you at **no charge until January 31, 2022**. After that, any applicable warranty will apply.

What You Should Do: To limit any possible inconvenience, we recommend that you contact your dealer as soon as possible to schedule an appointment for this repair.

If you have any questions or concerns that your dealer is unable to resolve, please contact the appropriate Customer Assistance Center at the number listed below.

Division	Number	Text Telephones (TTY)
Chevrolet	1-800-222-1020	1-800-833-2438
GMC	1-800-462-8782	1-800-462-8583
Puerto Rico – English	1-800-496-9994	
Puerto Rico – Español	1-800-496-9993	
Virgin Islands	1-800-496-9994	

We truly appreciate you taking the time to update your vehicle as we know your time is valuable. We want you to know that we will do our best, throughout your ownership experience, to ensure that your GM vehicle provides you many miles of enjoyable driving.

Neelie O'Connor
Executive Director
North America Contact Center Operations

N192275630