

FLA COE  
FLB COE  
FLD Conventional  
Business Class  
FLC 112 Conventional

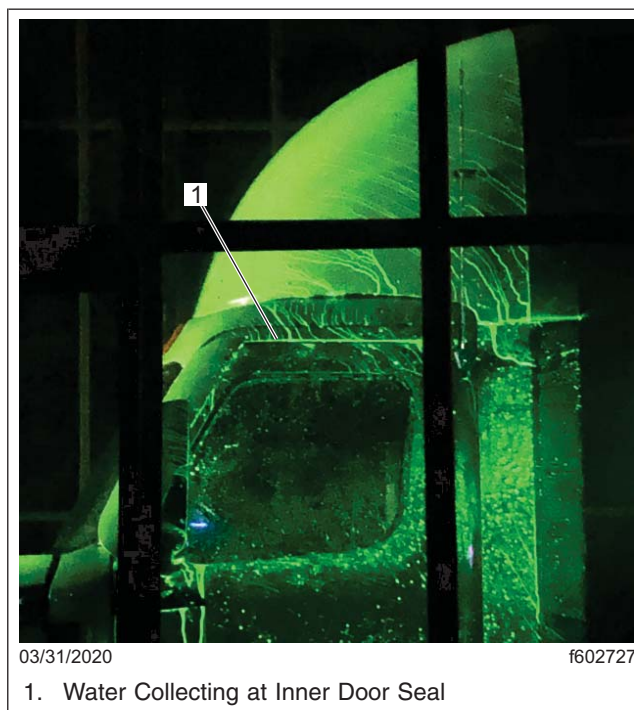
Century Class Conventional  
Argosy  
Cargo  
Columbia  
122SD and Coronado

Business Class M2  
Cascadia  
108SD/114SD  
> New Cascadia

**Freightliner  
Service Bulletin**

## General Information

New Cascadia day cab vehicles with roof fairings may experience minor water leaks through the upper door seals. See [Fig. 1](#).



**Fig. 1, Wind Tunnel Water Pattern**

This issue can be minimized by regularly wiping down the door seals to keep them free of road grime. See [Fig. 2](#) for an example of road grime collection from water leaking through the upper door seals.

### Freightliner Service Bulletin

FLA COE  
FLB COE  
FLD Conventional  
Business Class  
FLC 112 Conventional

Century Class Conventional  
Argosy  
Cargo  
Columbia  
122SD and Coronado

Business Class M2  
Cascadia  
108SD/114SD  
> New Cascadia



**Fig. 2, Road Grime on Door Seals**

A rain gutter seal can also be installed above each door using a Cascadia tertiary seal (part number 18-63286-002).

### Rain Gutter Installation

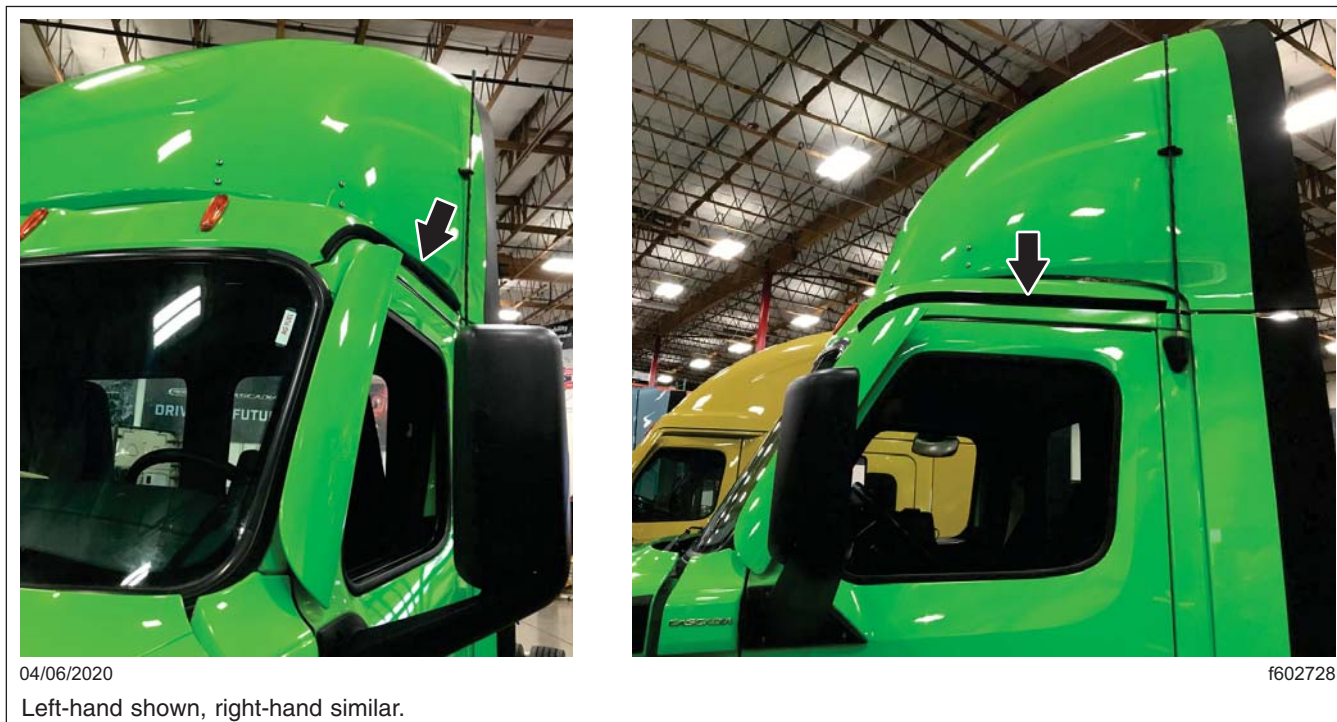
1. Park the vehicle on a level surface, shut down the engine, and set the parking brake. Chock the tires.
2. Clean and dry the cab surface.
3. Trim the front edge of a rain gutter seal at a 45 degree angle. When installed on the vehicle this will make the front of the seal close to vertical.
4. Peel and stick the rain gutter seal in place, using the roof cap seal as a guide. The rear end of the seal should start roughly 1 1/2 in (4 cm) aft of the rear edge of the door opening. Apply firm pressure along the entire length of the rain gutter seal to activate the PSA adhesive. See [Fig. 3](#) for an example of an installed seal.

FLA COE  
 FLB COE  
 FLD Conventional  
 Business Class  
 FLC 112 Conventional

Century Class Conventional  
 Argosy  
 Cargo  
 Columbia  
 122SD and Coronado

Business Class M2  
 Cascadia  
 108SD/114SD  
 > New Cascadia

**Freightliner  
 Service Bulletin**



**Fig. 3, Gutter Installed**

- Repeat on the other side of the vehicle.

## Warranty

This procedure is warrantable only if the described condition exists and the repair is performed within the applicable base or extended coverage warranty period. If a failure is not found, this procedure is considered preventive and warranty does not apply.

Normal warranty applies. See [Table 1](#) for OWL VMRS codes and labor allowance information. Enter this service bulletin number in the *Service Bulletin #* field.

OWL VMRS Codes and Labor Allowance					
Primary Failed Part	Component Code	Cause Code	SRT Code	Description	Time: Hours
A18-61958-001	002-026-004	12	651-5000A	Rain Gutter, Seal, Install (SB 60-168)	0.2

**Table 1, OWL VMRS Codes and Labor Allowance**