

FLA COE
 FLB COE
 FLD Conventional
 Business Class
 FLC 112 Conventional

Century Class Conventional
 Argosy
 Cargo
 Columbia
 122SD and Coronado

Business Class M2
 Cascadia
 108SD/114SD
 > New Cascadia

General Information

The area of the floor mat near the throttle pedal is more prone to wear. To extend the life of a floor mat, a wear pad can be installed on it near the throttle and brake pedal area.

Parts

Part Number	Description	Quantity
18-34070-000	Pad-Rub, Accelerator	1
23-12228-500	Nut-Push On, 1/2",SPR,STL,ZN	4

Table 1, Parts Required

Procedure

Wear Pad Installation With Reference to the Throttle Pedal Position

1. Park the vehicle on a level surface, shut down the engine, and set the parking brake. Chock the tires.
2. Follow the below instructions to position the wear pad on the floor mat.
 - See [Fig. 1](#) to determine the distance between top edge of the wear pad to the closest edge of the throttle pedal.

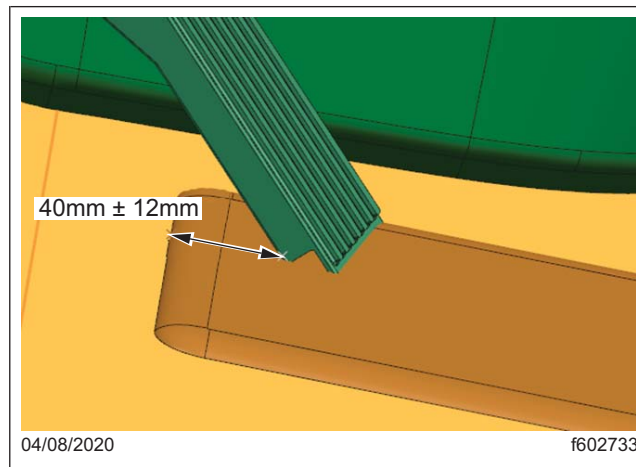


Fig. 1, Distance Between the Top Edge of Wear Pad to the Closest Edge of the Throttle Pedal

- For left hand drive (LHD) vehicles, see [Fig. 2](#) to determine the distance between the right hand side of the wear pad to the right hand side of the throttle pedal.

Freightliner Service Bulletin

FLA COE
FLB COE
FLD Conventional
Business Class
FLC 112 Conventional

Century Class Conventional
Argosy
Cargo
Columbia
122SD and Coronado

Business Class M2
Cascadia
108SD/114SD
> New Cascadia

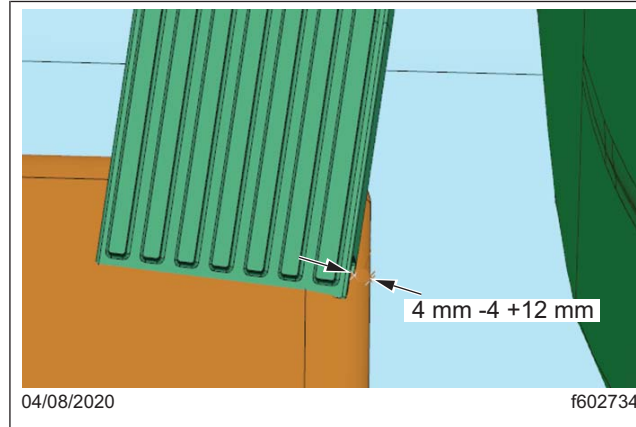


Fig. 2, Distance Between the Right Hand Side of Wear Pad to the Right Hand Side of the Throttle Pedal, LHD Vehicles

- For right hand drive (RHD) vehicles, see **Fig. 3** to determine the distance between the right hand side of the wear pad to the right hand side of the throttle pedal.

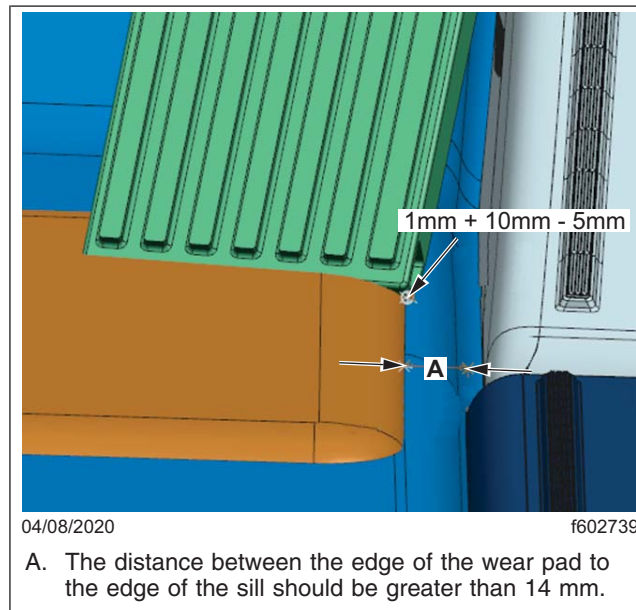


Fig. 3, Distance Between the Right Hand Side of Wear Pad to the Right Hand Side of the Throttle Pedal, RHD Vehicles

A. The distance between the edge of the wear pad to the edge of the sill should be greater than 14 mm.

3. With the wear pad positioned within the given dimensions, mark the center points of four wear pad push nuts on the floor mat.
4. Remove the floor mat from the vehicle.

FLA COE
FLB COE
FLD Conventional
Business Class
FLC 112 Conventional

Century Class Conventional
Argosy
Cargo
Columbia
122SD and Coronado

Business Class M2
Cascadia
108SD/114SD
> New Cascadia

**Freightliner
Service Bulletin**

- Drill four holes of 20 mm each through the marked points on the floor mat, and four holes of 55 mm each on the foam area at the backside of the marked points on floor mat as shown in [Fig. 4](#) and [Fig. 5](#).

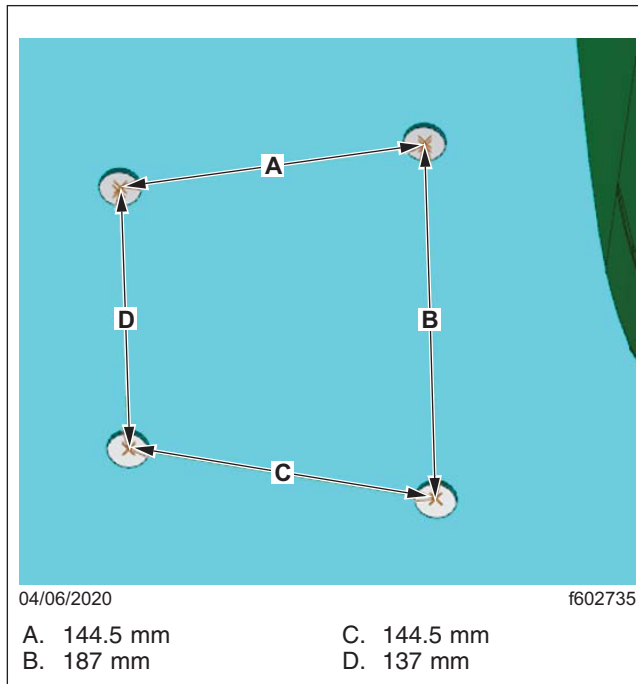


Fig. 4, Push Nut Hole Dimensions

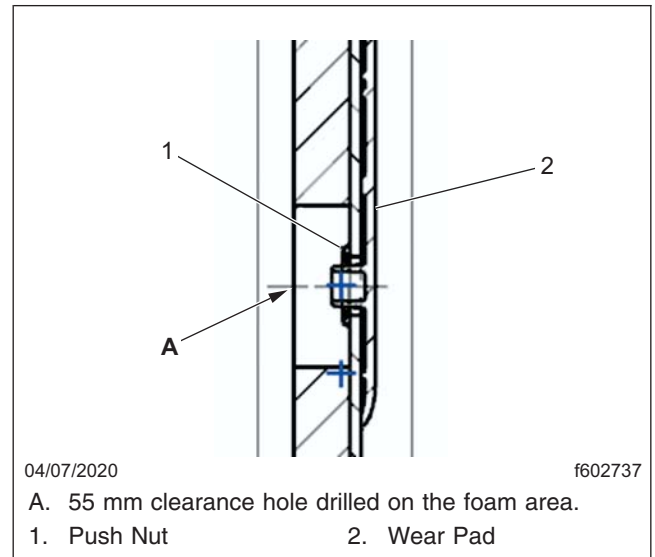


Fig. 5, Cross Sectional View of Wear Pad Push Nut Fit into the Floor Mat Hole

- To install the wear pad, place it on the upper side of the floor mat, and push fit the four push nuts through the four holes that are drilled on the floor mat.
- Install the floor mat on the vehicle.

! WARNING

An incorrectly installed wear pad can obstruct the movement of the throttle pedal, or arrest the throttle pedal to a certain position, which may cause accidents that could result in severe personal injury or death.

- To verify free movement of the throttle pedal, depress the throttle pedal to full play and release it. Continue the cycle a few more times.

Wear Pad Installation With Reference to Floor Mat Dimension

- Park the vehicle on a level surface, shut down the engine, and set the parking brake. Chock the tires.
- Remove the floor mat from the vehicle.
- For LHD vehicles, drill four holes of 20 mm each through the floor mat with accordance to the dimensions shown in [Fig. 6](#).

FLA COE
FLB COE
FLD Conventional
Business Class
FLC 112 Conventional

Century Class Conventional
Argosy
Cargo
Columbia
122SD and Coronado

Business Class M2
Cascadia
108SD/114SD
> New Cascadia

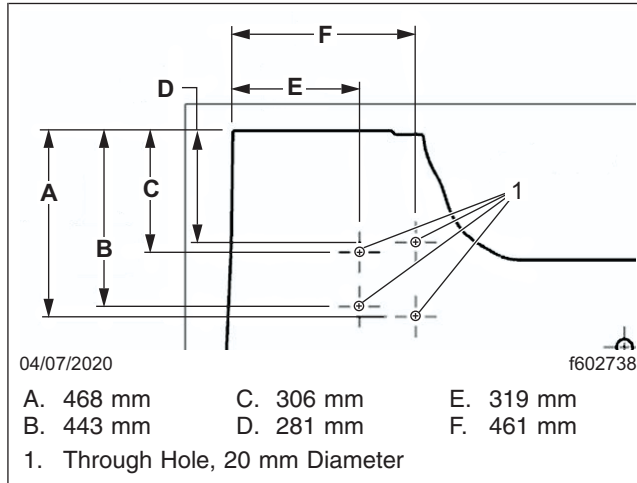


Fig. 6, Push Nut Hole Dimensions, LHD Vehicles

4. For RHD vehicles, drill four holes of 20 mm each through the floor mat with accordance to the dimensions shown in [Fig. 7](#) .

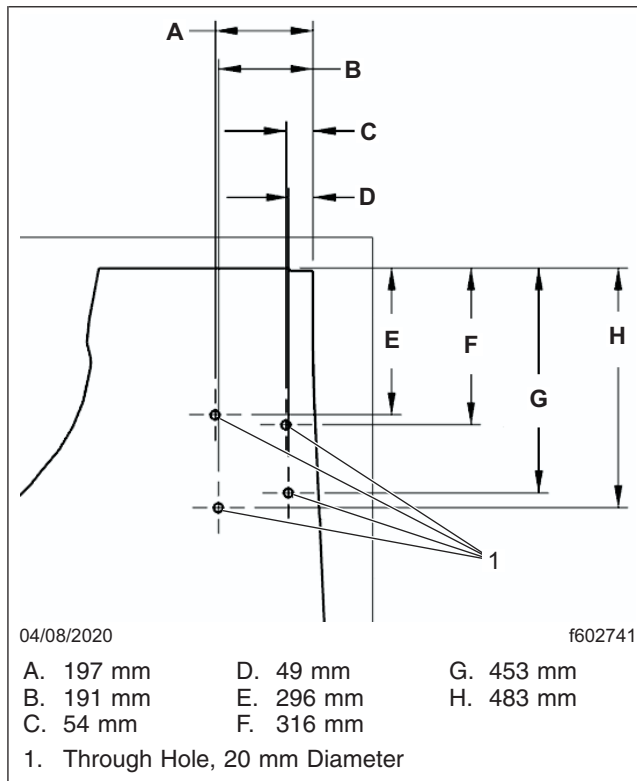


Fig. 7, Push Nut Hole Dimensions, RHD Vehicles

5. Drill four holes of 55 mm each on the foam area at the backside of the floor mat. See [Fig. 5](#) .

FLA COE
FLB COE
FLD Conventional
Business Class
FLC 112 Conventional

Century Class Conventional
Argosy
Cargo
Columbia
122SD and Coronado

Business Class M2
Cascadia
108SD/114SD
> New Cascadia

**Freightliner
Service Bulletin**

6. To install the wear pad, place it on the upper side of the floor mat, and push fit the four push nuts through the four holes that are drilled on the floor mat.
7. Install the floor mat on the vehicle.

 **WARNING**

An incorrectly installed wear pad can obstruct the movement of the throttle pedal, or arrest the throttle pedal to a certain position, which may cause accidents that could result in severe personal injury or death.

8. To verify free movement of the throttle pedal, depress the throttle pedal to full play and release it. Continue the cycle a few more times.

Warranty

This is an informational bulletin only. Warranty does not apply.