



Preliminary Information

PIT5287F Diagnostic Tip - Front Shock Terminal Removal

Models

Brand:	Model:	Model Years:	VIN:		Engine:	Transmissions:
			from	to		
Cadillac	Escalade Models	2015 - 2020	All	All	All	All
Chevrolet	Silverado	2015 - 2018	All	All	All	All
Chevrolet	Silverado LD	2019	All	All	All	All
Chevrolet	Suburban	2015 - 2020	All	All	All	All
Chevrolet	Tahoe	2015 - 2020	All	All	All	All
GMC	Sierra	2015 - 2018	All	All	All	All
GMC	Sierra Limited	2019	All	All	All	All
GMC	Yukon Models	2015 - 2020	All	All	All	All

With Magnetic Ride Suspension Package (RPO Z95)

Supersession Statement

This PI was superseded to update Model Years. Please discard PIT5287E.

The following diagnosis might be helpful if the vehicle exhibits the symptom(s) described in this PI.

Condition / Concern

Certain repairs to the front suspension require the removal of the front shock electrical connector terminals. Because the terminals are positioned deep into the connector body, it may be difficult to remove the terminals.

Note: If the shock is being replaced under warranty, do NOT cut the connector off. The wiring needs to stay intact when the shock is returned to engineering for testing.

Recommendations / Instructions

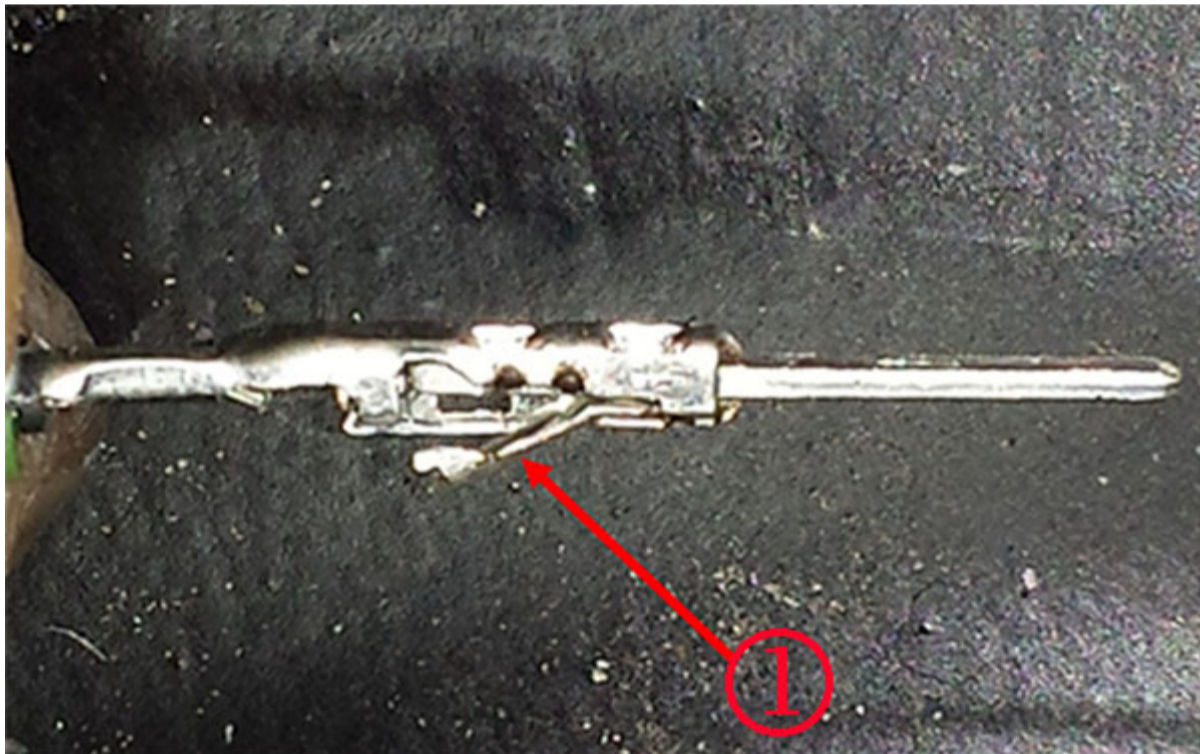
Note: If the shock is being replaced under warranty, do NOT cut the connector off. The wiring needs to stay intact when the shock is returned to engineering for testing.

The use of terminal release tool J-38125-12A (Delphi # 12094429), with a small modification, has been found to make removal of the terminal(s) much easier.

Slightly bend the end of the J-38125-12A release tool, as shown in the photo below.



While looking down into the connector body at the terminals, there is a purple TPA that will align itself in the release position when the release tool is inserted into the release hole. Shown below is a shock terminal, that is already removed from the connector body, to show the metal locking tab (1) that will need to be pushed in with the terminal release tool before the terminal will pull out of the connector body.



Please follow this diagnostic or repair process thoroughly and complete each step. If the condition exhibited is resolved without completing every step, the remaining steps do not need to be performed.

