



Subject: Replacing Adapter Plates on Tag Axle Bellows			
Field change Program: Service Bulletin	Bulletin Number: 3131	Revision: A	Date: 03/20/2020
Coach Section: 12- Suspension	P/N: 12-03-1492		Type: Product Improvement

Application:

Coach Model	Model Year	VIN
J4500	All coaches beginning with MY 2013, VIN: 66554	

⚠ WARNING

Read this entire procedure before beginning work.

Use Safe Shop Practices at All Times.

To avoid personal injury:

- a. Proper Personal Protective Equipment (PPE) must be worn. Safety glasses and protective gloves are required for working with DEF Fluid.*
- b. Turn the main battery disconnect switch to the OFF position.*
- c. Ensure that both the front and the rear wheels are chocked.*
- d. Position the ENGINE RUN and ENGINE START switches on the engine compartment remote control box to the OFF position.*
- e. Allow enough time for components to cool down prior to working in the engine compartment.*

1.0 Description

This procedure outlines steps to replace the adapter plates on the tag axle bellows to increase support for the bellow piston.

2.0 Material requirements

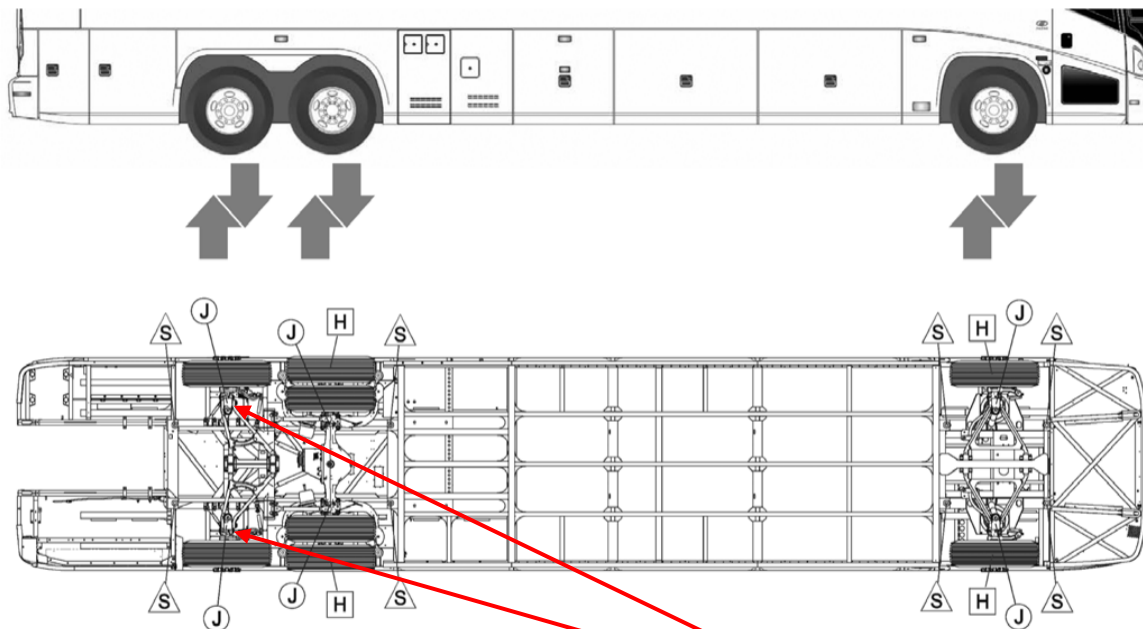
ITEM	PART NO	QTY	U/M	DESCRIPTION
1	6479895	2	EA	Plate- Adapter, Tag axle bellow
2	6479894	2	EA	Washer- Tag axle bellow

3.0 Special Tools

No special tools required.

4.0 Procedure

Lift the coach at the rear tag axle jacking points following the instructions in section 3F in the MCI J4500 Maintenance manual.



- △ S - Safety Stand (Primary Locations)
- J - Jacking Point
- H - Hoisting Point

Lift the coach at the rear jacking points

Remove and save the ten nuts on the hub cover of the driver side tag axle wheel. Save the hub cover



Remove and save the
hub nuts and hub cover

Remove and save the ten flange nuts on the wheel. Remove and save the wheel.



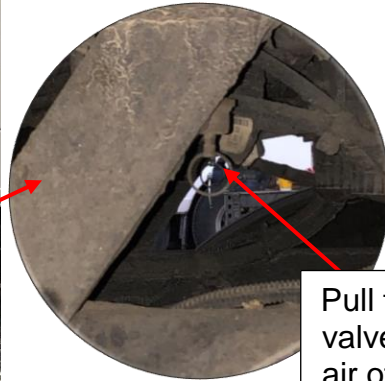
Remove and save the
flange nuts

⚠ WARNING

Tire and wheel assemblies weigh more than 200 lbs.

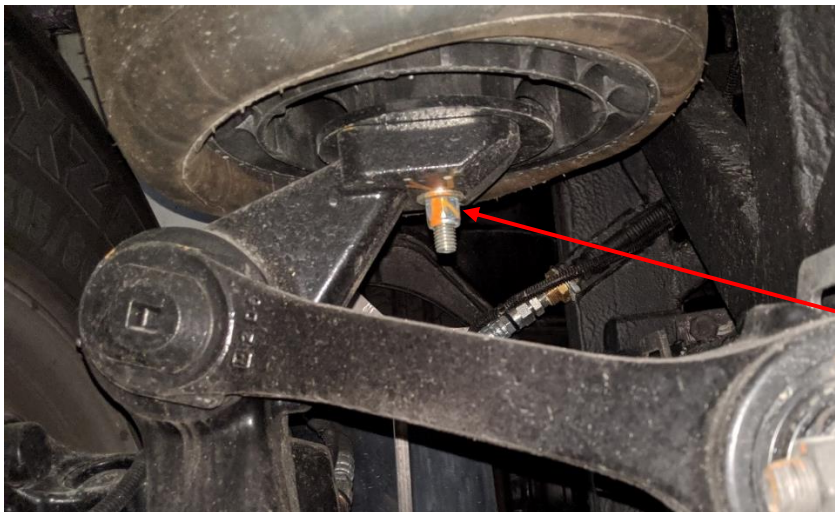
To prevent personal injury, use caution when loosening the wheel nuts, and when lifting the wheel off the hub.

Dump the air off the coach using the suspension air drain valve.



Pull the air drain valve to dump the air off the coach

Remove and save the nut and washer securing the tag axle bellow to the tag axle.



Remove and save the nut and washer

Remove and discard the adapter plate.



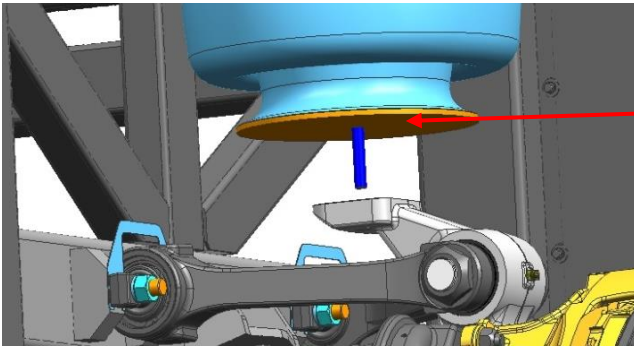
Remove and discard the adapter plate

Install the bellow washer, MCI P/N: 6879894, to the bellow as shown below.



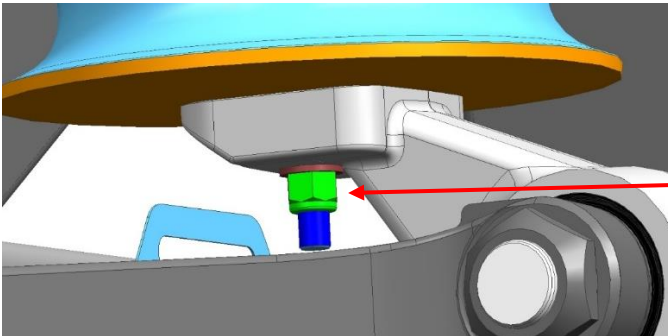
Install the bellow washer,
MCI P/N: 6879894

Install adapter plate, MCI P/N: 6479895, to the bellow.



Install adapter plate,
MCI P/N: 6479895

Install the modified bellow to the axle using the existing washer and nut. Torque the nut to 45 Ft-Lb.



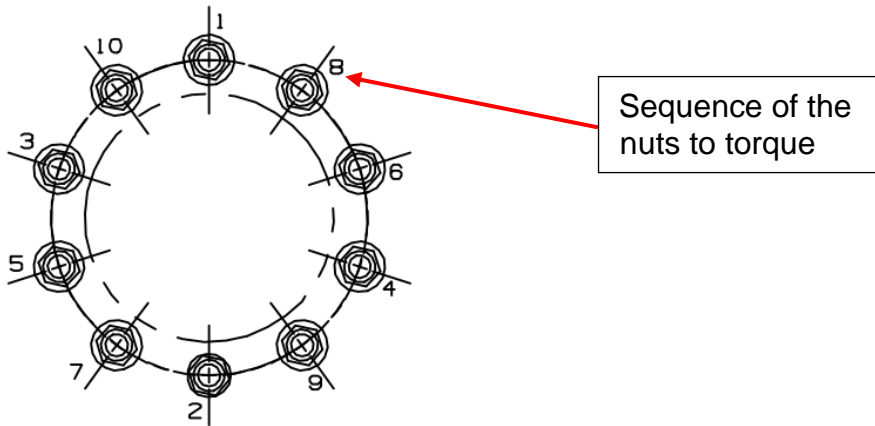
Install bellow using
nut and washer

Install the wheel using existing flange nuts and hand tighten the nuts.



Install the wheel
using flange nuts

Torque the nuts to 450-500 Ft-Lb in the sequence shown below.



Install the hub cover using the existing nut covers. Turn the nut covers approximately five full turns until the nut cover clamps the hub cover tightly against the wheel.



Repeat the steps on the passenger side (curbside) tag axle wheel.

End of the procedure