



<b>Subject:</b> Replacing Throttle Pedal Jumper Harness			
<b>Field Change Program:</b> Field Campaign	<b>FCP Number:</b> 475	<b>Revision:</b> A	<b>Date:</b> 03/24/2020
<b>Coach Section:</b> 07- Electrical	<b>P/N:</b> 04-15-1282		<b>Type:</b> Product Integrity

**Application:**

Coach Model	Model Year	VIN
J4500	2018 - 2020	68724 - 69598
J3500	2018 - 2019	21000 - 21030, 68877, 68909, 68965
D-CRT	2018 - 2020	81000 - 81050, 68746, 68772, 68803

*This field campaign does not necessarily apply to all the above-mentioned coaches. The owners of the coaches affected by this field campaign will be advised by a letter indicating the Vehicle Identification Number (VIN) of each coach concerned.*

**⚠ WARNING**

*Read this entire procedure before beginning work.*

*Use Safe Shop Practices at All Times.*

*To avoid personal injury:*

- a. Proper Personal Protective Equipment (PPE) must be worn. Safety glasses and protective gloves are required for working with DEF Fluid.*
- b. Turn the main battery disconnect switch to the OFF position.*
- c. Ensure that both the front and the rear wheels are chocked.*
- d. Position the ENGINE RUN and ENGINE START switches on the engine compartment remote control box to the OFF position.*
- e. Allow enough time for components to cool down prior to working in the engine compartment.*

## 1.0 Description

### Customer Complaint:

Motor Coach Industries (“MCI”) is advising owners that the throttle pedal sensors in certain J series and D-CRT coaches of MY 2018-2020 are providing intermittent, erratic data and causing the engine check light to become illuminated.

### Cause:

William Controls, the supplier of the throttle pedal, removed a p-clamp that holds the harness in place while the pedal is in operation. Due to the absence of the p-clamp the wires are put under stress during operation of the pedal and are breaking internally in the harness, creating an intermittent, erratic data signal being sent to the engine ECM.

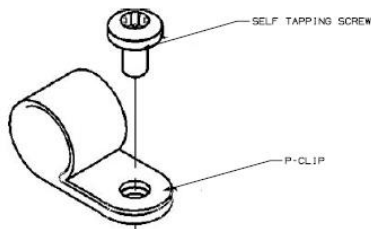
### Corrective Action:

MCI strongly recommends that owners of the affected coaches have the following procedure performed as soon as possible.

## 2.0 Material requirements

ITEM	PART NO	QTY	U/M	DESCRIPTION
1	T07-3774	1	EA	Kit-Throttle pedal, Jumper Harness

The kit contains a jumper harness, a p-clamp and a self-tapping screw.



Kit T07-3774

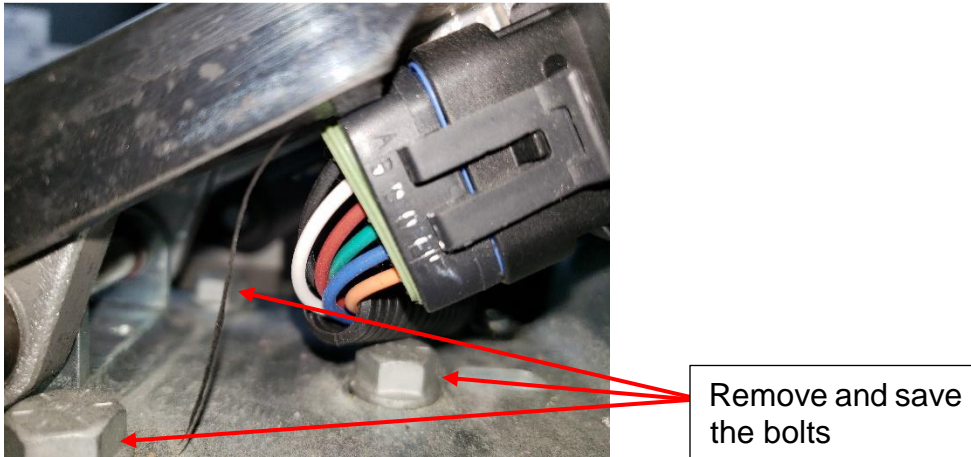
### 3.0 Special Tools

No special tools are required.

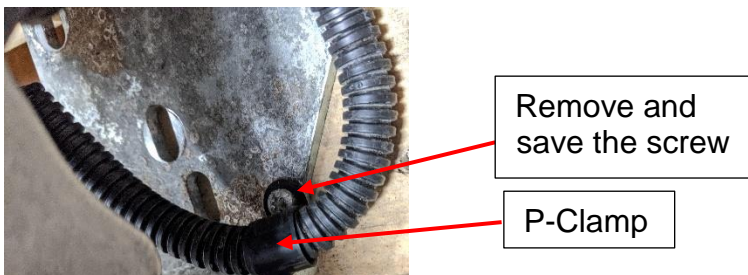
### 4.0 Procedure

#### 4.1 Removing the throttle pedal and throttle jumper harness

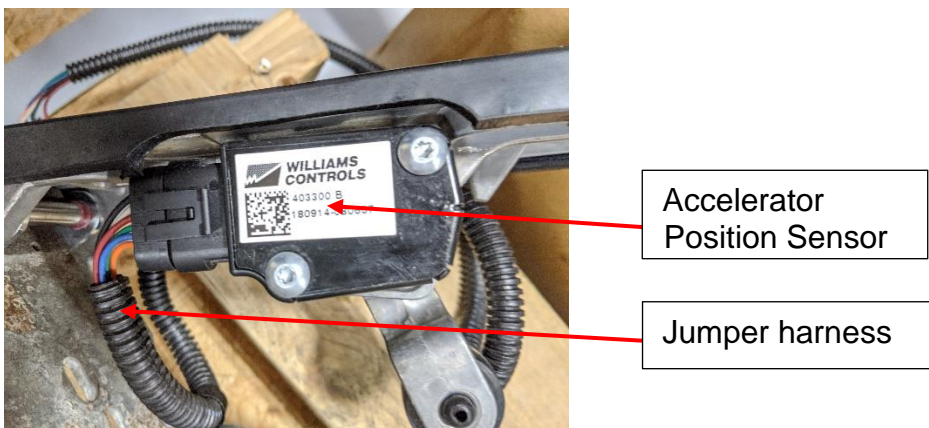
Remove and save the 3 bolts securing the throttle pedal.



Remove and save the screw securing the p-clamp to the bracket on the throttle pedal. Save the p-clamp.



Disconnect the jumper harness from the Accelerator Position Sensor.



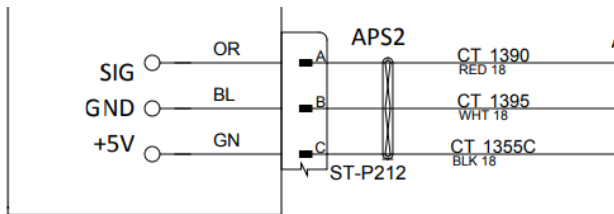
Move the spare tire out of the spare tire compartment and identify the throttle pedal connectors ST-P211 (APS-1) and ST-P212 (APS-2), part of the center tunnel harness, above the HVAC tube. Cut and discard ST-P211 and ST-P212 on the throttle jumper harness side. Discard the harness.



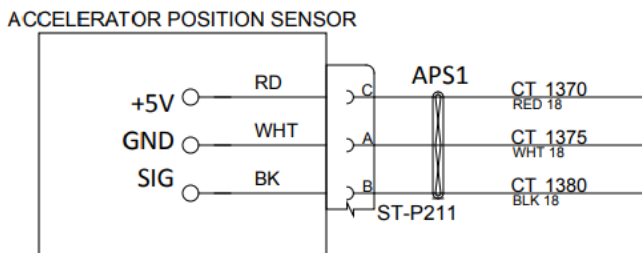
Cut and discard the connectors

#### 4.2 Install the new throttle pedal jumper harness

Connect the three-pin connector of the new jumper harness (part of kit T07-3774) with orange, blue and green wires to the ST-P212 connector of the center tunnel harness.

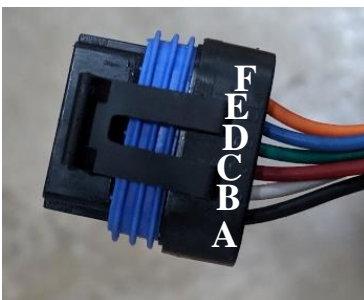


Connect the three-pin connector of the jumper harness (part of kit T07-3774) with red, white and black wires to the ST-P211 connector of the center tunnel harness.



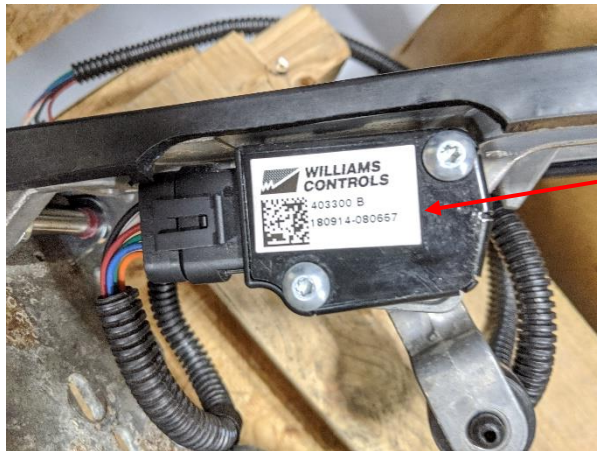
Route the other end of the harness through the grommet in the pedal assembly into the driver area.

Push the terminals into the 6-pin connector, part of kit T07-3774, as shown below.



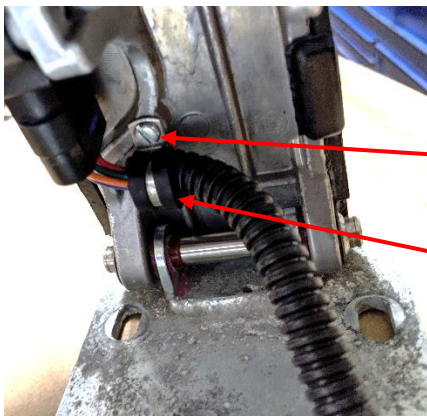
- A--BLACK----APS 1
- B--WHITE----GND 1
- C--RED-----VCC 1 (+5V)
- D--GREEN----VCC 2 (+5V)
- E--BLUE-----GND 2
- F--ORANGE--APS 2

Connect the assembled 6-pin end of the throttle pedal jumper harness to the accelerator position sensor on the throttle pedal.



Accelerator Position Sensor

Using self-tapping screw, part of kit T07-3774, install p-clamp, part of kit T07-3774, to the throttle pedal as shown below.



Self-tapping screw

P-Clamp

Re-install the existing p-clamp removed earlier as shown below.



Re-install the P-clamp

**NOTICE**

**CAUTIONS**

Make sure you route the jumper harness between the p-clamps leaving enough slack as shown in the picture below.



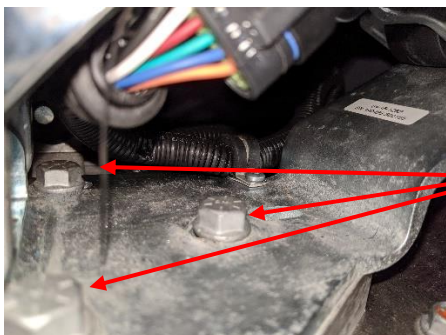
Harness routing

Route the harness into the spare tire compartment through the grommet in the pedal assembly.



Grommet

Install the pedal to the coach using the existing bolts. Torque them to 11 Ft-Lbs.



Torque the nuts to 11 Ft-Lbs

Zip tie the center tunnel harness in the spare tire compartment as shown below.



Zip ties, MCI P/N:  
19-11-258

Transfer the spare tire into the spare tire compartment.



**This procedure is now complete.**



## 5.0 Field Change Program Conditions:

The parts required for this change will be supplied without charge.

A labor allowance of 1 hour will be granted for the rework on affected J series and D-CRT coaches.

This labor allowance will be credited to your MCI Fleet Support Parts Account on receipt of the attached "MCI Field Change Program Verification Form" and a "Warranty Claim Form" as detailed in your Owner Warranty manual to MCI's Warranty department. An "MCI Field Change Program Verification Form" needs to be submitted for each VIN affected. Photocopy the attached "MCI Field Change Program Verification Form" as required for the number of affected coaches in your fleet.

This program will end on January 1, 2021.

Motor Coach apologizes for any inconvenience resulting from this campaign but urges you to implement this change as soon as possible.

Sincerely,

Motor Coach Industries



### 5.1 MCI FIELD CHANGE PROGRAM (FCP) VERIFICATION

CONTACT INFORMATION	
<b>CUSTOMER NAME:</b> _____ (PLEASE PRINT)	
FCP INFORMATION – ONE FORM PER UNIT	
<b>FCP#:</b> _____ <b>Coach Model</b> _____ <b>Model Year</b> _____	
<b>COACH SERIAL #:</b> (At least the last 5 digits)	<b>DATE COMPLETED</b> __ / __ / ____
<b>MILEAGE:</b>	
<b>IMPORTANT: TO RECEIVE CREDIT FOR ANY ALLOWABLE LABOR CHARGES, THIS VERIFICATION FORM MUST BE RETURNED TO MCI UPON COMPLETION OF THE FCP.</b>	
<b>SUBMITTED BY:</b> (Please Print) _____ DATE __ / __ / ____	
<b>TITLE:</b> (Please Print) _____	
<b>SIGNATURE:</b> _____	
<b>COMMENTS:</b>   	



**FAX TO: 800-360-8886**

Mail or fax the completed limited warranty claim form and verification form to MCI's warranty department, or photocopy and mail to:

**MCI Fleet Support**

**Attn: Warranty Department**

**7001 Universal Coach Drive Louisville, KY 40258**

**Fax Number 1-800-360-8886**

To receive credit for the hours used to complete this task. Contact the MCI Fleet Support Technical Center at 1-800-241-2947 for any further information.