



Ferrari North America

Technical Information

Date: March 2020
Bulletin #: FNA 170
Campaign #: 24100060
Supersedes:
Section:

Model and Model Year: 2009, 2010, 2011 California
2010, 2011 458 Italia

Subject: Recall 60A 24100060 Extension

In 2016, Ferrari launched the first Takata Recall 60 (**24000060**), which included MY 2009-2011 California and 2010-2011 458 Italia Ferrari Vehicles.

With recall 24000060, the passenger side airbag of the vehicles involved, had to be replaced with a **“like for like” part**. This means that the airbags were substituted with an identical airbag, but newer, and therefore not presenting the issues caused by time and exposure to humid environments.

Once the final remedy parts became available in 2017, Recall 60A (**24100060**) has been launched, replacing the Recall 24000060.

With Recall 24100060, the passenger side airbag had to be replaced with the **final remedy part 70004993**.

All the vehicles that have already had the like for like replacement were excluded by Recall 24100060, in order to give priority to the most critical vehicles.

NHTSA has now required the affected manufacturers to recall all the vehicles that have had the like for like replacement, in order to replace it with the final remedy part 70004993.

FNA will extend Recall 24100060 for all the vehicles that need to have the like for like passenger side airbag replaced with the final remedy airbag

Attached you can find the bulletin for the recall 60A (24100060) final remedy (where the prioritization by Zone has to be disregarded), and below the list of the 672 VINs included in the extension of recall 24100060.



Ferrari North America

VIN	MY	Model
ZFFLJ65A090166564	2009	California
ZFFLJ65A090166967	2009	California
ZFFLJ65A290167179	2009	California
ZFFLJ65A590166687	2009	California
ZFFLJ65A590166690	2009	California
ZFFLJ65A690165712	2009	California
ZFFLJ65A690166567	2009	California
ZFFLJ65A790166688	2009	California
ZFFLJ65A990166563	2009	California
ZFFLJ65A990166689	2009	California
ZFFLJ65A990166692	2009	California
ZFFLJ65A990167793	2009	California
ZFF67NFA0A0174639	2010	458 Italia
ZFF67NFA0A0174642	2010	458 Italia
ZFF67NFA0A0174690	2010	458 Italia
ZFF67NFA0A0175502	2010	458 Italia
ZFF67NFA0A0175757	2010	458 Italia
ZFF67NFA0A0175886	2010	458 Italia
ZFF67NFA0A0176147	2010	458 Italia
ZFF67NFA1A0174522	2010	458 Italia
ZFF67NFA1A0174813	2010	458 Italia
ZFF67NFA1A0174830	2010	458 Italia
ZFF67NFA1A0175492	2010	458 Italia
ZFF67NFA1A0175573	2010	458 Italia
ZFF67NFA1A0175752	2010	458 Italia
ZFF67NFA1A0175766	2010	458 Italia
ZFF67NFA1A0176061	2010	458 Italia
ZFF67NFA1A0176173	2010	458 Italia
ZFF67NFA2A0173671	2010	458 Italia
ZFF67NFA2A0174240	2010	458 Italia
ZFF67NFA2A0174531	2010	458 Italia
ZFF67NFA2A0174903	2010	458 Italia
ZFF67NFA2A0175288	2010	458 Italia
ZFF67NFA2A0175324	2010	458 Italia
ZFF67NFA2A0175503	2010	458 Italia
ZFF67NFA2A0175579	2010	458 Italia

VIN	MY	Model
ZFF67NFA6A0175486	2010	458 Italia
ZFF67NFA2A0175601	2010	458 Italia
ZFF67NFA2A0175758	2010	458 Italia
ZFF67NFA2A0175775	2010	458 Italia
ZFF67NFA2A0176070	2010	458 Italia
ZFF67NFA2A0176179	2010	458 Italia
ZFF67NFA2A0176201	2010	458 Italia
ZFF67NFA3A0174229	2010	458 Italia
ZFF67NFA3A0174361	2010	458 Italia
ZFF67NFA3A0174537	2010	458 Italia
ZFF67NFA3A0174831	2010	458 Italia
ZFF67NFA3A0175025	2010	458 Italia
ZFF67NFA3A0175042	2010	458 Italia
ZFF67NFA3A0175123	2010	458 Italia
ZFF67NFA3A0175770	2010	458 Italia
ZFF67NFA3A0175879	2010	458 Italia
ZFF67NFA3A0175901	2010	458 Italia
ZFF67NFA3A0176045	2010	458 Italia
ZFF67NFA4A0175485	2010	458 Italia
ZFF67NFA4A0175924	2010	458 Italia
ZFF67NFA4A0176037	2010	458 Italia
ZFF67NFA4A0176040	2010	458 Italia
ZFF67NFA4A0176152	2010	458 Italia
ZFF67NFA4A0176183	2010	458 Italia
ZFF67NFA4A0176197	2010	458 Italia
ZFF67NFA4A0176233	2010	458 Italia
ZFF67NFA5A0174099	2010	458 Italia
ZFF67NFA5A0174118	2010	458 Italia
ZFF67NFA5A0174524	2010	458 Italia
ZFF67NFA5A0174801	2010	458 Italia
ZFF67NFA5A0175124	2010	458 Italia
ZFF67NFA5A0175625	2010	458 Italia
ZFF67NFA6A0174810	2010	458 Italia
ZFF67NFA6A0174919	2010	458 Italia
ZFF67NFA6A0175133	2010	458 Italia
ZFF67NFA6A0175293	2010	458 Italia



Ferrari North America

VIN	MY	Model
ZFF67NFA6A0175522	2010	458 Italia
ZFF67NFA6A0175584	2010	458 Italia
ZFF67NFA6A0175892	2010	458 Italia
ZFF67NFA6A0176041	2010	458 Italia
ZFF67NFA7A0173116	2010	458 Italia
ZFF67NFA7A0173665	2010	458 Italia
ZFF67NFA7A0173987	2010	458 Italia
ZFF67NFA7A0174914	2010	458 Italia
ZFF67NFA7A0175481	2010	458 Italia
ZFF67NFA7A0175626	2010	458 Italia
ZFF67NFA7A0175741	2010	458 Italia
ZFF67NFA7A0175903	2010	458 Italia
ZFF67NFA7A0176016	2010	458 Italia
ZFF67NFA7A0176033	2010	458 Italia
ZFF67NFA7A0176047	2010	458 Italia
ZFF67NFA7A0176064	2010	458 Italia
ZFF67NFA7A0176193	2010	458 Italia
ZFF67NFA8A0174811	2010	458 Italia
ZFF67NFA8A0174856	2010	458 Italia
ZFF67NFA8A0175117	2010	458 Italia
ZFF67NFA8A0175277	2010	458 Italia
ZFF67NFA8A0175523	2010	458 Italia
ZFF67NFA8A0175764	2010	458 Italia
ZFF67NFA8A0175909	2010	458 Italia
ZFF67NFA8A0176185	2010	458 Italia
ZFF67NFA9A0174221	2010	458 Italia
ZFF67NFA9A0174803	2010	458 Italia
ZFF67NFA9A0175126	2010	458 Italia
ZFF67NFA9A0175577	2010	458 Italia
ZFF67NFA9A0176051	2010	458 Italia
ZFF67NFA9A0176079	2010	458 Italia
ZFF67NFA9A0176180	2010	458 Italia
ZFF67NFAXA0173983	2010	458 Italia
ZFF67NFAXA0174907	2010	458 Italia
ZFF67NFAXA0175281	2010	458 Italia
ZFF67NFAXA0175636	2010	458 Italia

VIN	MY	Model
ZFF67NFA6A0175469	2010	458 Italia
ZFF67NFAXA0176043	2010	458 Italia
ZFF65LHA0A0170789	2010	California
ZFF65LHA0A0172297	2010	California
ZFF65LHA0A0173031	2010	California
ZFF65LHA1A0173491	2010	California
ZFF65LHA2A0170096	2010	California
ZFF65LHA2A0170793	2010	California
ZFF65LHA2A0174892	2010	California
ZFF65LHA3A0169006	2010	California
ZFF65LHA3A0170401	2010	California
ZFF65LHA3A0173542	2010	California
ZFF65LHA4A0170066	2010	California
ZFF65LHA4A0171637	2010	California
ZFF65LHA4A0173033	2010	California
ZFF65LHA5A0169122	2010	California
ZFF65LHA5A0171615	2010	California
ZFF65LHA6A0172045	2010	California
ZFF65LHA6A0172885	2010	California
ZFF65LHA6A0173034	2010	California
ZFF65LHA6A0174720	2010	California
ZFF65LHA7A0173494	2010	California
ZFF65LHA8A0169759	2010	California
ZFF65LHA8A0171060	2010	California
ZFF65LHA8A0172080	2010	California
ZFF65LHA8A0174749	2010	California
ZFF65LHA9A0170063	2010	California
ZFF65LHA9A0170791	2010	California
ZFF65LHA9A0172296	2010	California
ZFF65LHA9A0173030	2010	California
ZFF65LHAXA0173604	2010	California
ZFF65LJA0A0169054	2010	California
ZFF65LJA0A0169376	2010	California
ZFF65LJA0A0169538	2010	California
ZFF65LJA0A0169751	2010	California
ZFF65LJA0A0170138	2010	California



Ferrari North America

VIN	MY	Model
ZFF67NFAXA0175765	2010	458 Italia
ZFF65LJA0A0170477	2010	California
ZFF65LJA0A0170673	2010	California
ZFF65LJA0A0170804	2010	California
ZFF65LJA0A0170950	2010	California
ZFF65LJA0A0171435	2010	California
ZFF65LJA0A0172195	2010	California
ZFF65LJA0A0172472	2010	California
ZFF65LJA0A0172701	2010	California
ZFF65LJA0A0172908	2010	California
ZFF65LJA0A0173444	2010	California
ZFF65LJA0A0175100	2010	California
ZFF65LJA0A0175694	2010	California
ZFF65LJA0A0175873	2010	California
ZFF65LJA1A0168432	2010	California
ZFF65LJA1A0169368	2010	California
ZFF65LJA1A0169371	2010	California
ZFF65LJA1A0169581	2010	California
ZFF65LJA1A0169600	2010	California
ZFF65LJA1A0169936	2010	California
ZFF65LJA1A0170231	2010	California
ZFF65LJA1A0170486	2010	California
ZFF65LJA1A0170505	2010	California
ZFF65LJA1A0171556	2010	California
ZFF65LJA1A0172075	2010	California
ZFF65LJA1A0172206	2010	California
ZFF65LJA1A0172299	2010	California
ZFF65LJA1A0172383	2010	California
ZFF65LJA1A0172691	2010	California
ZFF65LJA1A0172786	2010	California
ZFF65LJA1A0172920	2010	California
ZFF65LJA1A0173176	2010	California
ZFF65LJA1A0173551	2010	California
ZFF65LJA1A0173579	2010	California
ZFF65LJA1A0173713	2010	California
ZFF65LJA1A0175722	2010	California

VIN	MY	Model
ZFF65LJA0A0170267	2010	California
ZFF65LJA0A0170365	2010	California
ZFF65LJA2A0169508	2010	California
ZFF65LJA2A0169959	2010	California
ZFF65LJA2A0170660	2010	California
ZFF65LJA2A0171209	2010	California
ZFF65LJA2A0171436	2010	California
ZFF65LJA2A0171629	2010	California
ZFF65LJA2A0171775	2010	California
ZFF65LJA2A0171808	2010	California
ZFF65LJA2A0171811	2010	California
ZFF65LJA2A0172490	2010	California
ZFF65LJA2A0172697	2010	California
ZFF65LJA2A0172702	2010	California
ZFF65LJA2A0172781	2010	California
ZFF65LJA2A0172926	2010	California
ZFF65LJA2A0173039	2010	California
ZFF65LJA2A0173204	2010	California
ZFF65LJA2A0173283	2010	California
ZFF65LJA2A0173834	2010	California
ZFF65LJA3A0168416	2010	California
ZFF65LJA3A0168996	2010	California
ZFF65LJA3A0169355	2010	California
ZFF65LJA3A0169534	2010	California
ZFF65LJA3A0169579	2010	California
ZFF65LJA3A0170375	2010	California
ZFF65LJA3A0170487	2010	California
ZFF65LJA3A0170506	2010	California
ZFF65LJA3A0172059	2010	California
ZFF65LJA3A0172157	2010	California
ZFF65LJA3A0172191	2010	California
ZFF65LJA3A0172479	2010	California
ZFF65LJA3A0172918	2010	California
ZFF65LJA3A0172921	2010	California
ZFF65LJA3A0173308	2010	California
ZFF65LJA4A0168361	2010	California



Ferrari North America

VIN	MY	Model
ZFF65LJA1A0175865	2010	California
ZFF65LJA2A0168407	2010	California
ZFF65LJA4A0169350	2010	California
ZFF65LJA4A0169364	2010	California
ZFF65LJA4A0169512	2010	California
ZFF65LJA4A0169560	2010	California
ZFF65LJA4A0169588	2010	California
ZFF65LJA4A0170224	2010	California
ZFF65LJA4A0171437	2010	California
ZFF65LJA4A0171809	2010	California
ZFF65LJA4A0171969	2010	California
ZFF65LJA4A0172068	2010	California
ZFF65LJA4A0172295	2010	California
ZFF65LJA4A0172443	2010	California
ZFF65LJA4A0172717	2010	California
ZFF65LJA4A0172779	2010	California
ZFF65LJA4A0172930	2010	California
ZFF65LJA4A0173561	2010	California
ZFF65LJA4A0173706	2010	California
ZFF65LJA4A0173835	2010	California
ZFF65LJA4A0175701	2010	California
ZFF65LJA4A0175715	2010	California
ZFF65LJA4A0176007	2010	California
ZFF65LJA5A0168370	2010	California
ZFF65LJA5A0168384	2010	California
ZFF65LJA5A0168398	2010	California
ZFF65LJA5A0169065	2010	California
ZFF65LJA5A0169339	2010	California
ZFF65LJA5A0169342	2010	California
ZFF65LJA5A0169535	2010	California
ZFF65LJA5A0169549	2010	California
ZFF65LJA5A0169566	2010	California
ZFF65LJA5A0169597	2010	California
ZFF65LJA5A0169955	2010	California
ZFF65LJA5A0170670	2010	California
ZFF65LJA5A0171625	2010	California

VIN	MY	Model
ZFF65LJA4A0168408	2010	California
ZFF65LJA4A0169333	2010	California
ZFF65LJA4A0169347	2010	California
ZFF65LJA5A0175707	2010	California
ZFF65LJA6A0168443	2010	California
ZFF65LJA6A0168457	2010	California
ZFF65LJA6A0169334	2010	California
ZFF65LJA6A0169348	2010	California
ZFF65LJA6A0169513	2010	California
ZFF65LJA6A0169527	2010	California
ZFF65LJA6A0169561	2010	California
ZFF65LJA6A0170127	2010	California
ZFF65LJA6A0170161	2010	California
ZFF65LJA6A0170368	2010	California
ZFF65LJA6A0170659	2010	California
ZFF65LJA6A0171813	2010	California
ZFF65LJA6A0171827	2010	California
ZFF65LJA6A0172167	2010	California
ZFF65LJA6A0172413	2010	California
ZFF65LJA6A0172699	2010	California
ZFF65LJA6A0172749	2010	California
ZFF65LJA6A0172928	2010	California
ZFF65LJA6A0172931	2010	California
ZFF65LJA6A0173206	2010	California
ZFF65LJA6A0173433	2010	California
ZFF65LJA6A0173724	2010	California
ZFF65LJA6A0174324	2010	California
ZFF65LJA6A0175389	2010	California
ZFF65LJA6A0175859	2010	California
ZFF65LJA6A0175862	2010	California
ZFF65LJA7A0169357	2010	California
ZFF65LJA7A0169519	2010	California
ZFF65LJA7A0169536	2010	California
ZFF65LJA7A0169553	2010	California
ZFF65LJA7A0169746	2010	California
ZFF65LJA7A0169942	2010	California



Ferrari North America

VIN	MY	Model
ZFF65LJA5A0172001	2010	California
ZFF65LJA5A0172144	2010	California
ZFF65LJA5A0173570	2010	California
ZFF65LJA7A0171206	2010	California
ZFF65LJA7A0171853	2010	California
ZFF65LJA7A0172145	2010	California
ZFF65LJA7A0172484	2010	California
ZFF65LJA7A0172758	2010	California
ZFF65LJA7A0172792	2010	California
ZFF65LJA7A0173196	2010	California
ZFF65LJA7A0173201	2010	California
ZFF65LJA7A0173442	2010	California
ZFF65LJA7A0173571	2010	California
ZFF65LJA7A0175255	2010	California
ZFF65LJA7A0175868	2010	California
ZFF65LJA7A0176101	2010	California
ZFF65LJA8A0168427	2010	California
ZFF65LJA8A0168458	2010	California
ZFF65LJA8A0169125	2010	California
ZFF65LJA8A0169366	2010	California
ZFF65LJA8A0169528	2010	California
ZFF65LJA8A0169769	2010	California
ZFF65LJA8A0169772	2010	California
ZFF65LJA8A0170050	2010	California
ZFF65LJA8A0170145	2010	California
ZFF65LJA8A0170159	2010	California
ZFF65LJA8A0170257	2010	California
ZFF65LJA8A0170503	2010	California
ZFF65LJA8A0170517	2010	California
ZFF65LJA8A0170520	2010	California
ZFF65LJA8A0171215	2010	California
ZFF65LJA8A0171828	2010	California
ZFF65LJA8A0172056	2010	California
ZFF65LJA8A0172302	2010	California
ZFF65LJA8A0172803	2010	California
ZFF65LJA8A0172896	2010	California

VIN	MY	Model
ZFF65LJA7A0170234	2010	California
ZFF65LJA7A0170511	2010	California
ZFF65LJA7A0170671	2010	California
ZFF65LJA7A0170685	2010	California
ZFF65LJA8A0174468	2010	California
ZFF65LJA8A0175703	2010	California
ZFF65LJA8A0175863	2010	California
ZFF65LJA9A0169084	2010	California
ZFF65LJA9A0169537	2010	California
ZFF65LJA9A0169540	2010	California
ZFF65LJA9A0169554	2010	California
ZFF65LJA9A0169618	2010	California
ZFF65LJA9A0169621	2010	California
ZFF65LJA9A0169747	2010	California
ZFF65LJA9A0169764	2010	California
ZFF65LJA9A0169943	2010	California
ZFF65LJA9A0170056	2010	California
ZFF65LJA9A0170218	2010	California
ZFF65LJA9A0170266	2010	California
ZFF65LJA9A0170509	2010	California
ZFF65LJA9A0170686	2010	California
ZFF65LJA9A0171210	2010	California
ZFF65LJA9A0171630	2010	California
ZFF65LJA9A0171773	2010	California
ZFF65LJA9A0172177	2010	California
ZFF65LJA9A0172440	2010	California
ZFF65LJA9A0172454	2010	California
ZFF65LJA9A0172468	2010	California
ZFF65LJA9A0172938	2010	California
ZFF65LJA9A0172941	2010	California
ZFF65LJA9A0173300	2010	California
ZFF65LJA9A0173846	2010	California
ZFF65LJA9A0175175	2010	California
ZFF65LJA9A0175192	2010	California
ZFF65LJA9A0175872	2010	California
ZFF65LJAXA0168395	2010	California



Ferrari North America

VIN	MY	Model
ZFF65LJA8A0172929	2010	California
ZFF65LJA8A0173191	2010	California
ZFF65LJA8A0173708	2010	California
ZFF65LJA8A0173837	2010	California
ZFF65LJAXA0169496	2010	California
ZFF65LJAXA0169501	2010	California
ZFF65LJAXA0169580	2010	California
ZFF65LJAXA0170065	2010	California
ZFF65LJAXA0170227	2010	California
ZFF65LJAXA0170356	2010	California
ZFF65LJAXA0170499	2010	California
ZFF65LJAXA0170776	2010	California
ZFF65LJAXA0171958	2010	California
ZFF65LJAXA0172205	2010	California
ZFF65LJAXA0172480	2010	California
ZFF65LJAXA0172785	2010	California
ZFF65LJAXA0172804	2010	California
ZFF65LJAXA0172916	2010	California
ZFF65LJAXA0173287	2010	California
ZFF65LJAXA0173712	2010	California
ZFF65LJAXA0173726	2010	California
ZFF65LJAXA0174326	2010	California
ZFF65LJAXA0174469	2010	California
ZFF65LJAXA0175850	2010	California
ZFF67NFA0B0177008	2011	458 Italia
ZFF67NFA0B0177171	2011	458 Italia
ZFF67NFA0B0178160	2011	458 Italia
ZFF67NFA0B0178367	2011	458 Italia
ZFF67NFA0B0179034	2011	458 Italia
ZFF67NFA0B0179048	2011	458 Italia
ZFF67NFA0B0179650	2011	458 Italia
ZFF67NFA0B0180412	2011	458 Italia
ZFF67NFA0B0181382	2011	458 Italia
ZFF67NFA0B0181737	2011	458 Italia
ZFF67NFA0B0182239	2011	458 Italia
ZFF67NFA0B0182659	2011	458 Italia

VIN	MY	Model
ZFF65LJAXA0168462	2010	California
ZFF65LJAXA0168767	2010	California
ZFF65LJAXA0168879	2010	California
ZFF65LJAXA0169353	2010	California
ZFF65LJAXA0169370	2010	California
ZFF67NFA1B0176725	2011	458 Italia
ZFF67NFA1B0176899	2011	458 Italia
ZFF67NFA1B0176997	2011	458 Italia
ZFF67NFA1B0177003	2011	458 Italia
ZFF67NFA1B0177521	2011	458 Italia
ZFF67NFA1B0178359	2011	458 Italia
ZFF67NFA1B0178605	2011	458 Italia
ZFF67NFA1B0179334	2011	458 Italia
ZFF67NFA1B0179723	2011	458 Italia
ZFF67NFA1B0180712	2011	458 Italia
ZFF67NFA1B0180743	2011	458 Italia
ZFF67NFA1B0180760	2011	458 Italia
ZFF67NFA1B0180791	2011	458 Italia
ZFF67NFA1B0181746	2011	458 Italia
ZFF67NFA1B0182430	2011	458 Italia
ZFF67NFA1B0182444	2011	458 Italia
ZFF67NFA1B0182637	2011	458 Italia
ZFF67NFA1B0182668	2011	458 Italia
ZFF67NFA2B0176510	2011	458 Italia
ZFF67NFA2B0176717	2011	458 Italia
ZFF67NFA2B0176720	2011	458 Italia
ZFF67NFA2B0176877	2011	458 Italia
ZFF67NFA2B0176989	2011	458 Italia
ZFF67NFA2B0177012	2011	458 Italia
ZFF67NFA2B0177155	2011	458 Italia
ZFF67NFA2B0177639	2011	458 Italia
ZFF67NFA2B0178600	2011	458 Italia
ZFF67NFA2B0178712	2011	458 Italia
ZFF67NFA2B0178998	2011	458 Italia
ZFF67NFA2B0179326	2011	458 Italia
ZFF67NFA2B0180279	2011	458 Italia



Ferrari North America

VIN	MY	Model
ZFF67NFA0B0182676	2011	458 Italia
ZFF67NFA1B0176353	2011	458 Italia
ZFF67NFA1B0176367	2011	458 Italia
ZFF67NFA1B0176370	2011	458 Italia
ZFF67NFA1B0176658	2011	458 Italia
ZFF67NFA3B0177262	2011	458 Italia
ZFF67NFA3B0177276	2011	458 Italia
ZFF67NFA3B0177391	2011	458 Italia
ZFF67NFA3B0177407	2011	458 Italia
ZFF67NFA3B0177634	2011	458 Italia
ZFF67NFA3B0178704	2011	458 Italia
ZFF67NFA3B0179609	2011	458 Italia
ZFF67NFA3B0179724	2011	458 Italia
ZFF67NFA3B0180422	2011	458 Italia
ZFF67NFA3B0181750	2011	458 Italia
ZFF67NFA3B0182400	2011	458 Italia
ZFF67NFA3B0182445	2011	458 Italia
ZFF67NFA4B0176508	2011	458 Italia
ZFF67NFA4B0176556	2011	458 Italia
ZFF67NFA4B0176895	2011	458 Italia
ZFF67NFA4B0177013	2011	458 Italia
ZFF67NFA4B0177142	2011	458 Italia
ZFF67NFA4B0177268	2011	458 Italia
ZFF67NFA4B0177318	2011	458 Italia
ZFF67NFA4B0178713	2011	458 Italia
ZFF67NFA4B0179151	2011	458 Italia
ZFF67NFA4B0179649	2011	458 Italia
ZFF67NFA4B0179652	2011	458 Italia
ZFF67NFA4B0179666	2011	458 Italia
ZFF67NFA4B0180400	2011	458 Italia
ZFF67NFA4B0180431	2011	458 Italia
ZFF67NFA4B0180803	2011	458 Italia
ZFF67NFA4B0181014	2011	458 Italia
ZFF67NFA4B0181742	2011	458 Italia
ZFF67NFA4B0182065	2011	458 Italia
ZFF67NFA4B0182082	2011	458 Italia

VIN	MY	Model
ZFF67NFA2B0180587	2011	458 Italia
ZFF67NFA2B0180802	2011	458 Italia
ZFF67NFA2B0182212	2011	458 Italia
ZFF67NFA3B0176287	2011	458 Italia
ZFF67NFA3B0176998	2011	458 Italia
ZFF67NFA3B0177004	2011	458 Italia
ZFF67NFA5B0178347	2011	458 Italia
ZFF67NFA5B0178574	2011	458 Italia
ZFF67NFA5B0178588	2011	458 Italia
ZFF67NFA5B0178591	2011	458 Italia
ZFF67NFA5B0178722	2011	458 Italia
ZFF67NFA5B0179045	2011	458 Italia
ZFF67NFA5B0182186	2011	458 Italia
ZFF67NFA5B0182205	2011	458 Italia
ZFF67NFA5B0182415	2011	458 Italia
ZFF67NFA6B0176820	2011	458 Italia
ZFF67NFA6B0177160	2011	458 Italia
ZFF67NFA6B0177465	2011	458 Italia
ZFF67NFA6B0178213	2011	458 Italia
ZFF67NFA6B0178356	2011	458 Italia
ZFF67NFA6B0178597	2011	458 Italia
ZFF67NFA6B0179037	2011	458 Italia
ZFF67NFA6B0179152	2011	458 Italia
ZFF67NFA6B0179653	2011	458 Italia
ZFF67NFA6B0180267	2011	458 Italia
ZFF67NFA6B0180575	2011	458 Italia
ZFF67NFA6B0180740	2011	458 Italia
ZFF67NFA6B0181533	2011	458 Italia
ZFF67NFA6B0181743	2011	458 Italia
ZFF67NFA6B0182441	2011	458 Italia
ZFF67NFA7B0176809	2011	458 Italia
ZFF67NFA7B0176986	2011	458 Italia
ZFF67NFA7B0177300	2011	458 Italia
ZFF67NFA7B0177314	2011	458 Italia
ZFF67NFA7B0177393	2011	458 Italia
ZFF67NFA7B0177409	2011	458 Italia



Ferrari North America

VIN	MY	Model
ZFF67NFA4B0182437	2011	458 Italia
ZFF67NFA5B0176713	2011	458 Italia
ZFF67NFA5B0176727	2011	458 Italia
ZFF67NFA5B0176811	2011	458 Italia
ZFF67NFA5B0176842	2011	458 Italia
ZFF67NFA5B0177828	2011	458 Italia
ZFF67NFA7B0182223	2011	458 Italia
ZFF67NFA8B0176253	2011	458 Italia
ZFF67NFA8B0176348	2011	458 Italia
ZFF67NFA8B0176544	2011	458 Italia
ZFF67NFA8B0176821	2011	458 Italia
ZFF67NFA8B0176902	2011	458 Italia
ZFF67NFA8B0178004	2011	458 Italia
ZFF67NFA8B0178584	2011	458 Italia
ZFF67NFA8B0178603	2011	458 Italia
ZFF67NFA8B0179041	2011	458 Italia
ZFF67NFA8B0179329	2011	458 Italia
ZFF67NFA8B0179332	2011	458 Italia
ZFF67NFA8B0180724	2011	458 Italia
ZFF67NFA8B0180836	2011	458 Italia
ZFF67NFA8B0181744	2011	458 Italia
ZFF67NFA8B0181808	2011	458 Italia
ZFF67NFA8B0182442	2011	458 Italia
ZFF67NFA8B0182618	2011	458 Italia
ZFF67NFA9B0176259	2011	458 Italia
ZFF67NFA9B0176682	2011	458 Italia
ZFF67NFA9B0176892	2011	458 Italia
ZFF67NFA9B0177637	2011	458 Italia
ZFF67NFA9B0178724	2011	458 Italia
ZFF67NFA9B0178884	2011	458 Italia
ZFF67NFA9B0179047	2011	458 Italia
ZFF67NFA9B0180277	2011	458 Italia
ZFF67NFA9B0180411	2011	458 Italia
ZFF67NFA9B0181381	2011	458 Italia
ZFF67NFA9B0181753	2011	458 Italia
ZFF67NFA9B0182207	2011	458 Italia

VIN	MY	Model
ZFF67NFA7B0177636	2011	458 Italia
ZFF67NFA7B0178365	2011	458 Italia
ZFF67NFA7B0178723	2011	458 Italia
ZFF67NFA7B0180410	2011	458 Italia
ZFF67NFA7B0180553	2011	458 Italia
ZFF67NFA7B0180780	2011	458 Italia
ZFF67NFA7B0181024	2011	458 Italia
ZFF67NFAXB0180546	2011	458 Italia
ZFF67NFAXB0180725	2011	458 Italia
ZFF67NFAXB0180885	2011	458 Italia
ZFF67NFAXB0181275	2011	458 Italia
ZFF67NFAXB0182443	2011	458 Italia
ZFF67NFL5B0177488	2011	458 Italia
ZFF65LHA1B0179227	2011	California
ZFF65LHA2B0176644	2011	California
ZFF65LHA4B0181893	2011	California
ZFF65LHA8B0179385	2011	California
ZFF65LHA8B0180021	2011	California
ZFF65LJA0B0176443	2011	California
ZFF65LJA0B0176748	2011	California
ZFF65LJA0B0176765	2011	California
ZFF65LJA0B0176930	2011	California
ZFF65LJA0B0177043	2011	California
ZFF65LJA0B0178256	2011	California
ZFF65LJA0B0178290	2011	California
ZFF65LJA0B0179553	2011	California
ZFF65LJA0B0180914	2011	California
ZFF65LJA0B0181108	2011	California
ZFF65LJA0B0181593	2011	California
ZFF65LJA0B0182338	2011	California
ZFF65LJA1B0176757	2011	California
ZFF65LJA1B0176760	2011	California
ZFF65LJA1B0177570	2011	California
ZFF65LJA1B0177956	2011	California
ZFF65LJA1B0179898	2011	California
ZFF65LJA1B0180341	2011	California



Ferrari North America

VIN	MY	Model
ZFF67NFAXB0176836	2011	458 Italia
ZFF67NFAXB0177517	2011	458 Italia
ZFF67NFAXB0177842	2011	458 Italia
ZFF67NFAXB0177937	2011	458 Italia
ZFF67NFAXB0178005	2011	458 Italia
ZFF67NFAXB0178604	2011	458 Italia
ZFF67NFAXB0178702	2011	458 Italia
ZFF65LJA2B0180204	2011	California
ZFF65LJA2B0181174	2011	California
ZFF65LJA2B0181210	2011	California
ZFF65LJA2B0182132	2011	California
ZFF65LJA3B0177957	2011	California
ZFF65LJA3B0178106	2011	California
ZFF65LJA3B0179756	2011	California
ZFF65LJA3B0179899	2011	California
ZFF65LJA3B0181555	2011	California
ZFF65LJA3B0181832	2011	California
ZFF65LJA4B0176249	2011	California
ZFF65LJA4B0176459	2011	California
ZFF65LJA4B0177224	2011	California
ZFF65LJA4B0178289	2011	California
ZFF65LJA4B0178471	2011	California
ZFF65LJA4B0179555	2011	California
ZFF65LJA4B0179748	2011	California
ZFF65LJA4B0179751	2011	California
ZFF65LJA4B0181449	2011	California
ZFF65LJA4B0181841	2011	California
ZFF65LJA5B0176762	2011	California
ZFF65LJA5B0177569	2011	California
ZFF65LJA5B0179497	2011	California
ZFF65LJA5B0179547	2011	California
ZFF65LJA5B0179550	2011	California
ZFF65LJA5B0179581	2011	California
ZFF65LJA5B0180200	2011	California
ZFF65LJA5B0180326	2011	California
ZFF65LJA5B0180651	2011	California

VIN	MY	Model
ZFF65LJA1B0181554	2011	California
ZFF65LJA2B0176444	2011	California
ZFF65LJA2B0176931	2011	California
ZFF65LJA2B0178470	2011	California
ZFF65LJA2B0178937	2011	California
ZFF65LJA2B0179103	2011	California
ZFF65LJA2B0179568	2011	California
ZFF65LJA2B0180056	2011	California
ZFF65LJA6B0181159	2011	California
ZFF65LJA6B0181212	2011	California
ZFF65LJA6B0181453	2011	California
ZFF65LJA6B0181548	2011	California
ZFF65LJA6B0181842	2011	California
ZFF65LJA6B0182134	2011	California
ZFF65LJA7B0176763	2011	California
ZFF65LJA7B0178626	2011	California
ZFF65LJA7B0179503	2011	California
ZFF65LJA7B0180506	2011	California
ZFF65LJA7B0180912	2011	California
ZFF65LJA7B0181462	2011	California
ZFF65LJA7B0181557	2011	California
ZFF65LJA7B0181607	2011	California
ZFF65LJA8B0176447	2011	California
ZFF65LJA8B0176495	2011	California
ZFF65LJA8B0176500	2011	California
ZFF65LJA8B0178425	2011	California
ZFF65LJA8B0180336	2011	California
ZFF65LJA8B0181132	2011	California
ZFF65LJA8B0181177	2011	California
ZFF65LJA8B0181437	2011	California
ZFF65LJA8B0181454	2011	California
ZFF65LJA8B0181552	2011	California
ZFF65LJA8B0181566	2011	California
ZFF65LJA8B0182121	2011	California
ZFF65LJA9B0176747	2011	California
ZFF65LJA9B0177042	2011	California



Ferrari North America

VIN	MY	Model
ZFF65LJA5B0181136	2011	California
ZFF65LJA5B0181296	2011	California
ZFF65LJA5B0181461	2011	California
ZFF65LJA5B0181850	2011	California
ZFF65LJA6B0177953	2011	California
ZFF65LJA6B0178939	2011	California
ZFF65LJA6B0179511	2011	California
ZFF65LJA6B0180514	2011	California
ZFF65LJAXB0178636	2011	California
ZFF65LJAXB0179575	2011	California
ZFF65LJAXB0181133	2011	California
ZFF65LJAXB0181309	2011	California
ZFF65LJAXB0181441	2011	California
ZFF65LJAXB0181567	2011	California
ZFF65LJAXB0181570	2011	California

VIN	MY	Model
ZFF65LJA9B0178627	2011	California
ZFF65LJA9B0179759	2011	California
ZFF65LJA9B0180667	2011	California
ZFF65LJA9B0181110	2011	California
ZFF65LJA9B0181303	2011	California
ZFF65LJA9B0181852	2011	California
ZFF65LJA9B0182130	2011	California
ZFF65LJAXB0177552	2011	California
ZFF65LJAXB0178457	2011	California

Ferrari North America, Inc.

October 2017

Dear Ferrari Dealer:



Ferrari has decided that a defect which relates to motor vehicle safety exists in certain Model Year 2009-2011 Ferrari California and Model Year 2010-2011 458 Italia vehicles equipped with a passenger-side front air bag manufactured and supplied by Takata Corporation. We want to assure you that our clients' safety is our priority, and we are committed to correcting this condition in their vehicles.

Takata has reported that the passenger side front air bag inflator could potentially rupture in vehicles involved in an incident in which the frontal airbags deploy. This risk is due to propellant degradation which may occur after long-term exposure to high temperatures, high absolute humidity and high temperature cycling causing the inflator to rupture in deployment, which may result in serious injury or death to vehicle occupants.

Ferrari is now able to provide a "FINAL REMEDY" repair to the above referenced vehicles and will no longer be permitting the use of "like-for-like" passenger side airbag replacements.

IMPORTANT

The National Highway Traffic Safety Administration (NHTSA) and the impacted vehicle manufacturers, including Ferrari, are prioritizing Takata air bag repairs to ensure that vehicles with air bags that pose a higher risk to safety are fixed first while simultaneously working to ensure that parts are available to repair every affected vehicle as quickly as possible.

NHTSA has decided to prioritize the recall based on three geographical zones.

Zone A States are: Alabama, California, Florida, Georgia, Hawaii, Louisiana, Mississippi, South Carolina, Texas, Puerto Rico, American Samoa, Guam, the Northern Mariana Islands (Saipan), and the U.S. Virgin Islands

Zone B States are: Arizona, Arkansas, Delaware, District of Columbia, Illinois, Indiana, Kansas, Kentucky, Maryland, Missouri, Nebraska, Nevada, New Jersey, New Mexico, North Carolina, Ohio, Oklahoma, Pennsylvania, Tennessee, Virginia, and West Virginia,

Zone C States are: Alaska, Colorado, Connecticut, Idaho, Iowa, Maine, Massachusetts, Michigan, Minnesota, Montana, New Hampshire, New York, North Dakota, Oregon, Rhode Island, South Dakota, Utah, Vermont, Washington, Wisconsin, and Wyoming

Customers in Zone A that have **not** had Recall 60 (i.e., the 'like-for-like' repair) performed will be the first to have this recall performed. Ferrari will notify the Zone A owners with a letter indicating that the parts are available, and will replace the passenger side air bag module, free of charge.

Please note that this is the FINAL REMEDY version of the passenger frontal airbag for these models.



Owners may contact Ferrari North America at (201) 816-2668. Ferrari's number for this recall is 60.

It is a violation of Federal law for a dealer to deliver a new motor vehicle covered by this notification under a sale or lease until the defect is remedied.

An initial supply of the final remedy airbags will be sent to you by the FNA Parts Department. You must however order the necessary brackets and hardware required for each vehicle. Any additional airbags required can be ordered directly from the FNA Parts Department.

Upon transmittal of the repair under the normal warranty system, we will reimburse you for the labor necessary to carry out this campaign.

Technical Department
Ferrari North America, Inc.



SECOND NOTICE - URGENT SAFETY RECALL

This notice applies to your vehicle (VIN: ZFFXXXXXXXXXXXXXXXXX).

RC 60 / NHTSA 16V-341

Dear [Mr. John Doe],

This notice is sent to you in accordance with the National Traffic and Motor Vehicle Safety Act.

Ferrari has decided that a defect which relates to motor vehicle safety exists in certain Model Year 2009-2011 California and Model Year 2010-2011 458 Italia vehicles equipped with a passenger-side front airbag manufactured and supplied by Takata Corporation. We want to assure you that your safety is our priority, and we are committed to correcting this condition in your vehicle.

Takata has reported that the passenger side front airbag could potentially rupture in vehicles involved in an incident in which the frontal airbags deploy. This risk is due to propellant degradation which may occur after long-term exposure to high temperatures, high absolute humidity and high temperature cycling causing the inflator to rupture in deployment. Metal fragments may pass through the airbag striking vehicle occupants, leading to serious injury or death.

Our records show that your vehicle has not yet received the free repair.

IMPORTANT – CONTACT YOUR DEALER TODAY

The National Highway Traffic Safety Administration (NHTSA) and the impacted vehicle manufacturers, including Ferrari, are prioritizing Takata airbag repairs to ensure that vehicles with airbags that pose a higher risk to safety are fixed first while simultaneously working to ensure that parts are available to repair every affected vehicle as quickly as possible. Based on NHTSA's criteria, your vehicle has been selected for this recall.

Final replacement airbags are now available in your area. Please make an appointment with your nearest dealer to have the FREE repair performed on your vehicle.

Ferrari will repair your vehicle free of charge. The repair involves replacing the Passenger Frontal Airbag Module. Please contact your Ferrari dealer at that time and make an appointment to have this repair performed. The time needed for this repair is estimated to be between 2 and 5 hours depending on the model; however, your dealer may need to keep your vehicle for a longer period of time. Please be prepared to leave your vehicle with your dealer for at least a full day.

Please also note that only the passenger frontal airbag is affected by this recall. The driver's frontal airbag is unaffected.

If you have any questions or concerns that your dealer is unable to resolve, please contact Ferrari North America, Inc. at +1(201) 816-2668 or NHTSA at +1(888) 327-4236.

Thank you for your attention to this important matter.

Technical Department
Ferrari North America, Inc.

PLEASE NOTE: Federal law requires that any vehicle lessor receiving this recall notice must forward a copy of this notice to the lessee by First Class Mail within ten business days.



U.S.A. RECALL CAMPAIGN NO. 60



458
ITALIA

Model Years 2010 - 2011

Ferrari
California

Model Years 2009 - 2011

Takata Passenger Frontal Air Bag

RECALL CAMPAIGN OVERVIEW

- INTRODUCTION:** Ferrari 458Italia and Ferrari California Vehicles
- SUBJECT:** Recall Campaign No. 60
- VEHICLES:** Ferrari 458Italia, MY 2010 - 2011
Ferrari California, MY 2009 - 2011
(see ModisCS for VINs involved)
- CONDITION:** These vehicles are equipped with air bag inflators assembled as part of the passenger frontal air bag modules, used as original equipment or replacement equipment. In the event of a crash necessitating passenger frontal air bag deployment, these inflators may rupture due to propellant degradation occurring after long-term exposure to absolute humidity and temperature cycling. An inflator rupture may result in metal fragments striking the vehicle occupants resulting in serious injury or death.
- REMEDY:** Ferrari will repair the vehicle free of charge. The repair involves replacing the Passenger Air Bag Module. This repair takes approximately 2 to 5 hours to complete depending on the model.



RECALL CAMPAIGN OVERVIEW (cont.)

PARTS INVOLVED: The parts necessary to implement the RECALL CAMPAIGN are described herein and an initial supply will be provided to you directly from FNA. After which you will need to order any additional airbags you require.

- Passenger Air Bag Module P/N **70004993** Qty. 1
- California Airbag mounting bracket P/N **761617** Qty. 1
- 458 Italia Airbag Mounting Bracket P/N **802804** Qty. 1
- Hardware requiring replacement 458 and California:
 - Washer P/N 012643701 Qty. 4
 - Screw P/N 010902028 Qty. 4
 - Nut P/N 000102741 Qty. 4
 - Washer P/N 012643701 Qty. 4

Update the CRM customer database on the ModisCS website accordingly as soon as you receive any notification regarding the status of the vehicle (e.g., change of ownership, scrapping, etc.).

Services under warranty

Ferrari California Vehicles

- › Campaign number 60
- › Cost code 24
- › Malfunction code..... 49.7.00.001
- › Problem code01
- › Operation code 49.0.90.308.0
- › Time allowance 5.00 Hours



RECALL CAMPAIGN OVERVIEW (cont.)

458 Italia vehicles

› Campaign number	60
› Cost code	24
› Malfunction code.....	42.7.00.001
› Problem code	01
› Operation code	42.0.90.308.1
› Time allowance	1.35 Hours

REIMBURSEMENT: Upon receipt of a warranty claim via ModisCS



U.S.A. RECALL CAMPAIGN No. 60



458
ITALIA

Model Years 2009 - 2011

Ferrari
California

Model Years 2010 - 2011

Takata Passenger Frontal Air Bag and Brackets

TECHNICAL INSTRUCTIONS

Please read all instructions before performing this campaign.

The procedure required for this RECALL CAMPAIGN consists in replacing the **Passenger Side Air Bag module** .

- IMPORTANT -

After completing the necessary procedure, you must enter the serial number of the airbag in the service entry as per FNA 151



- IMPORTANT -

- Use safety goggles when handling un-deployed Airbag modules.
- Always set the airbag module down with the bag deployment side facing upwards.
- NEVER place anything on the bag deployment side of the airbag module.
- Always handle the airbag module with the bag deployment side away from the body.

The RECALL CAMPAIGN procedure described herein must be performed precisely as indicated by the following instructions:

- IMPORTANT -

DO NOT damage the packaging of the new replacement airbag since it must be reused to hold the airbag that has been removed from the vehicle.

- IMPORTANT -

The fixing nuts of the passenger airbag module to the dashboard and the fixing screws and washers of the relative retention bracket to the airbag itself, must be replaced and installed as they were originally; see the relative table in the Parts Catalog.

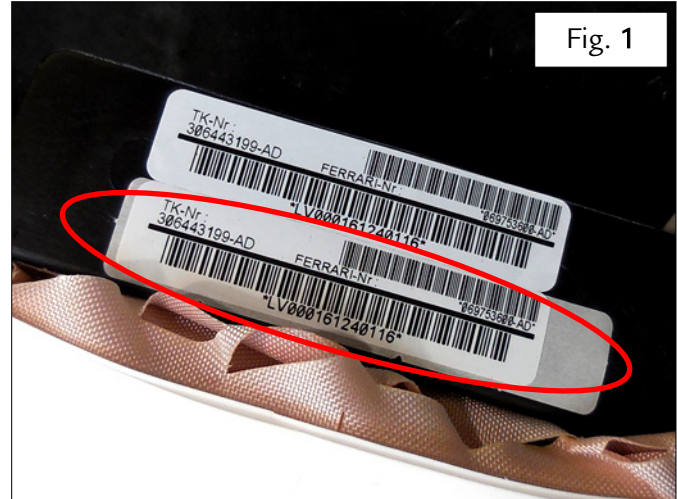
- IMPORTANT -

Protect the steering wheel adequately during the procedures to remove trim elements described as follows.



1 Replacing the passenger side airbag module

- 1.1 Remove the label with the airbag identification details, shown in Fig. 1, from the new airbag and affix it in the relative space in a printout of the “Passenger side airbag module replacement traceability form”, included in this booklet.



- 1.2 Disconnect the battery (as described in paragraph F2.01 of the Workshop Manual).
- 1.3 Remove the passenger side airbag module (as described in paragraph F4.02 step 3 of the 458 Italia Workshop Manual).

NOTE: For the **Ferrari California** model, the updated procedure is available from the July 2016 update of the Technical Documentation.

- IMPORTANT -

The nuts that fasten the passenger airbag module to the dashboard trim and the screws and washers that fasten the retainer bracket to the airbag must be replaced and installed as they were originally; see the relative table in the Spare Parts Catalog.



- 1.4 The installation of the new airbag module **P/N 70004993** requires the use of a special bracket to mount the airbag to the dashboard. See the Overview section of this booklet for the bracket part numbers as well as the hardware part numbers.

The new component is marked with a specific label bearing the phrase "PAB-FER-F164 SP" on the packaging, as seen in Fig. 1.

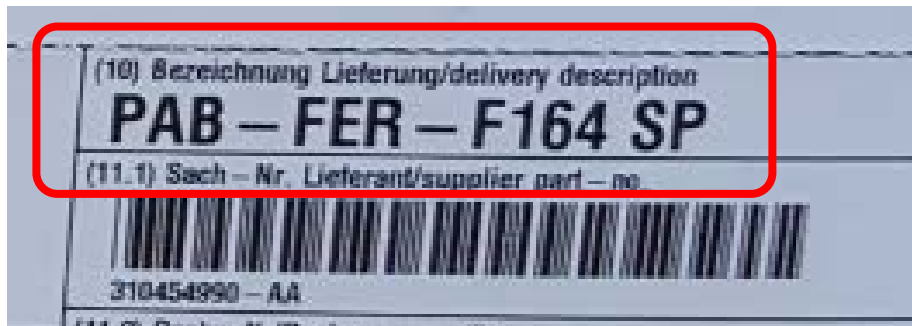


Fig. 1

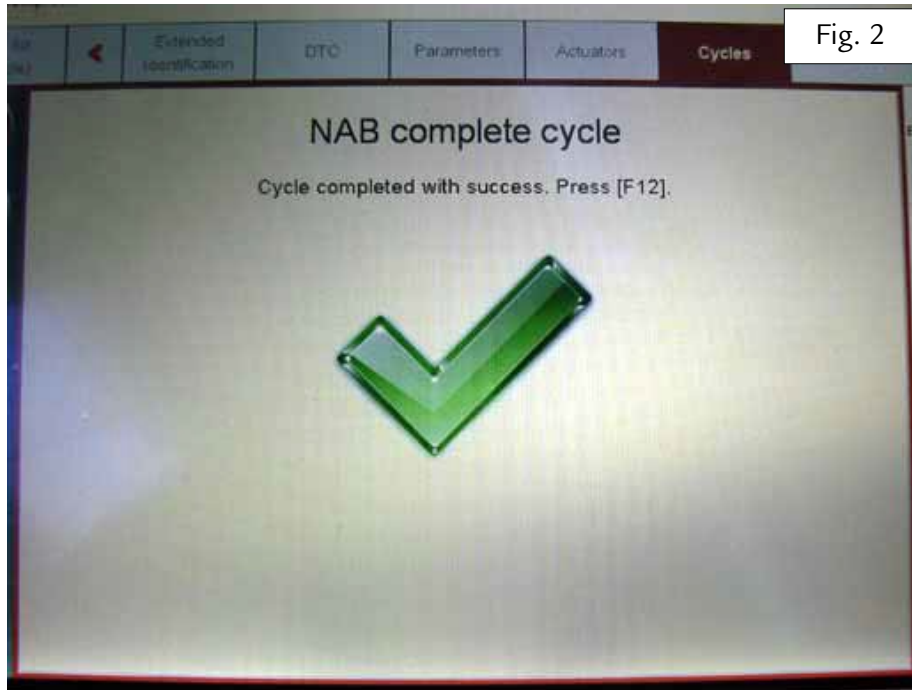
Install the NEW passenger side airbag module and bracket (as described in paragraph F4.02 step 3 of the 458 Italia Workshop Manual).

NOTE: For the **Ferrari California** model, the updated procedure is available from the July 2016 update of the Technical Documentation.

- IMPORTANT -

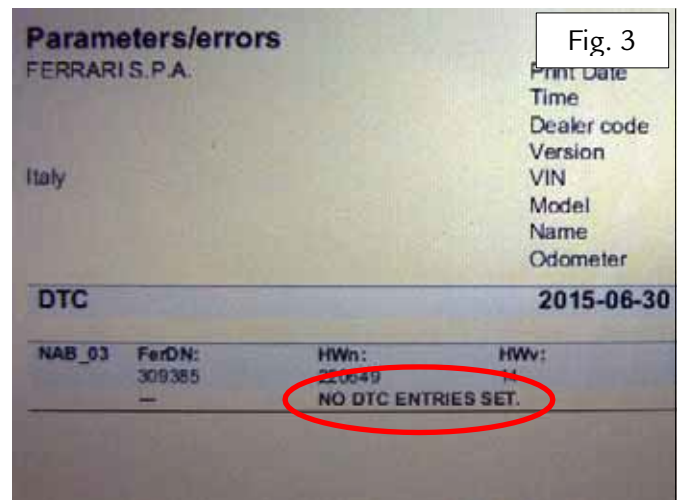
The airbag module fastener screws must be tightened with a calibrated and certified torque wrench to the torque specified in the relative chapter of the Workshop Manual.

- 1.5 Reconnect the battery (as described in paragraph F2.01 of the Workshop Manual).
- 1.6 Turn the ignition switch to **KEY-ON** and check that there are no indicator lamps or warnings relative to the airbag or any other systems on the instrument cluster.
- 1.7 Connect the DEIS diagnostic tester to the diagnostic socket in the vehicle and perform the airbag control unit cycle **10 NAB Complete Cycle**.
- 1.8 Ensure that the cycle is completed successfully – Fig. 2.



1.9 Access the “DTC” area of the DEIS Tester relative to the “NAB” airbag ECU, select “Save”, “Preview” and “Print” in the sequence given and check that there are no active errors in the ECU memory – Fig. 3.

Note: If any errors are stored, open an ROL with the description “Technical Support”, attaching the file generated.



1.10 At the end of the procedure, perform a **SCAN OUT** with the DEIS tester.

1.11 Complete the form “**Passenger side airbag module replacement traceability form**”, included in this booklet, in full, and attach it to the warranty claim



2 Guidelines for returning replaced airbag modules

- 2.1 Replaced airbag modules and UN-USED “Like-for-Like” airbag modules will be collected from your premises by Takata or by personnel appointed by Takata. The guidelines which must be observed for correctly returning these components are given below:
- 2.2 The dealer must contact Takata by writing to the e-mail address Logistics.Business-Services@eu.takata.com, or by calling the Call Center (phone number: +49 (0)6021 65 2222), providing the general details and information necessary for collection of the components.
- 2.3 Takata/the courier will prepare the necessary shipping documents.
- 2.4 The Takata center sends the ADR document (document for the transport of dangerous goods) to the dealer, which will then be handed to the shipping company together with the goods. ***Do Not Sign the ADR document unless you are officially certified to ship dangerous goods and have the required 24 hour hotline.***
- 2.5 The dealer must ensure that the packaging containing the replaced airbag module is sealed correctly (use the same packaging in which the replacement airbag module was received).

- IMPORTANT -

DO NOT damage the packaging of the new replacement airbag, as it must be reused to ship the airbag removed from the vehicle.

- IMPORTANT -

DO NOT rip or tear off the labeling on the container.

Passenger side airbag module replacement traceability form



Model	Updated on
<i>458</i> ITALIA <small>FERRARI</small> <i>California</i>	October 2017

Once the passenger side airbag module has been replaced, as indicated in Recall Campaign No. 60A, you are required to complete this form in full, taking and attaching the photograph as requested, to ensure that the Ferrari database is kept correctly up to date.

Customer: _____

Chassis number: _____

Date: _____

Km/mi: _____

NOTES: _____

NEW PASSENGER SIDE AIRBAG MODULE ID LABEL
(affix the label in the space below)

Take a **photograph** of the ID label on the replaced passenger side airbag **module** and attach it to the warranty claim.

After fully completing this form, attach it to the warranty claim together with the photographic documentation.

Task performed by (Dealer): _____

Technical Manager:

Name: _____
(Print)

Last Name: _____
(Print)

Company stamp

Signature

Date: _____