



# RECALL CAMPAIGN BULLETIN

Classification: EM19-010	Reference: NTB20-025	Date: March 31, 2020
-----------------------------	-------------------------	-------------------------

## VOLUNTARY EMISSIONS RECALL CAMPAIGN 2018 ALTIMA AND ROGUE; CYLINDER HEAD

**CAMPAIGN ID #:** PC716  
**APPLIED VEHICLES:** 2018 Altima (L33)  
2018 Rogue (T32)  
**APPLIED ENGINE:** QR25DE (4-cyl)

**Check Service COMM or Dealer Business Systems (DBS)  
National Service History to confirm campaign eligibility.**

### INTRODUCTION

Nissan is conducting this voluntary emissions recall campaign on certain specific model year 2018 Altima and Rogue vehicles. The cylinder head will be inspected, and the long engine assembly replaced if needed. This service will be performed at no charge to the customer for parts or labor.

### IDENTIFICATION NUMBER

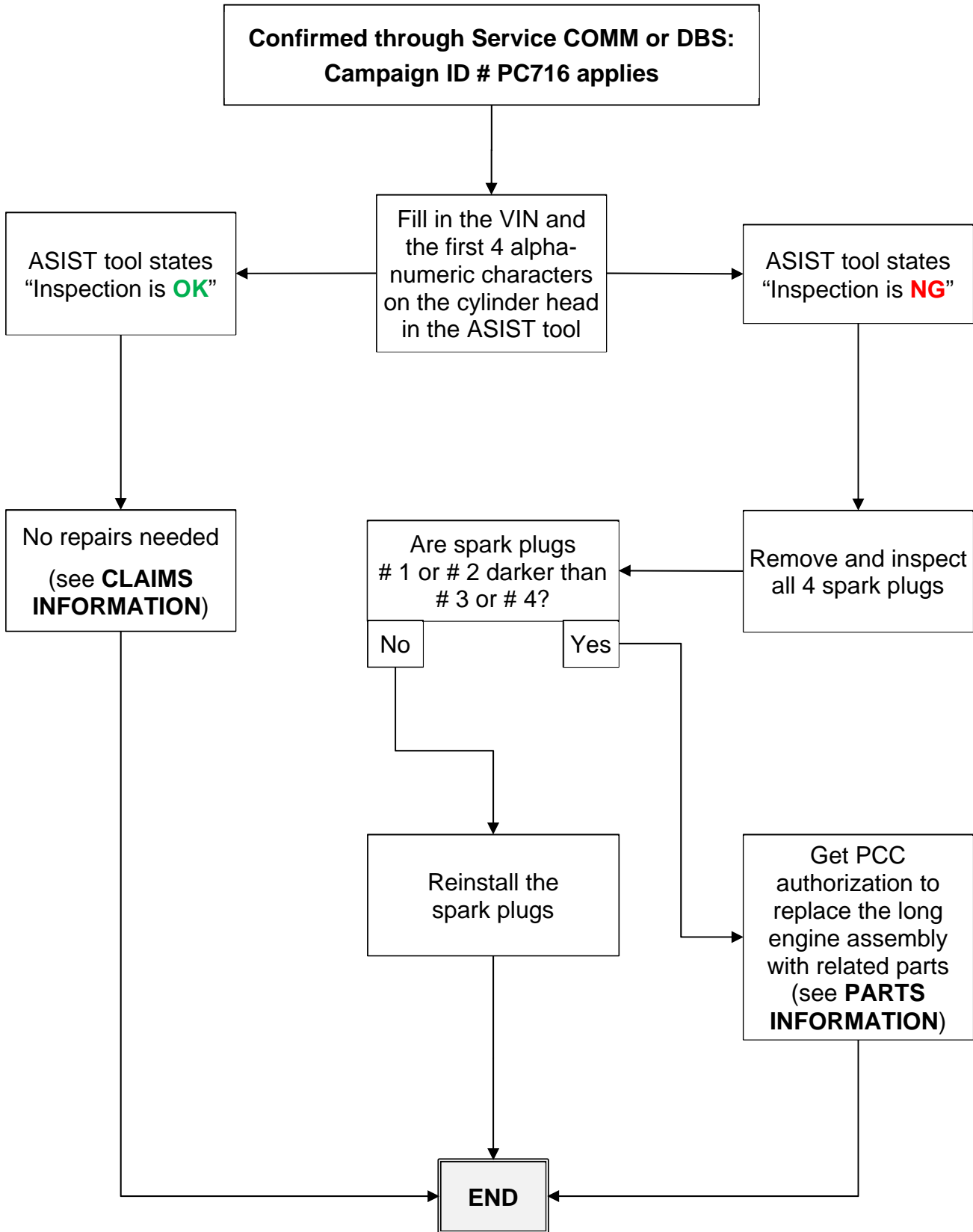
Nissan has assigned identification number PC716 to this campaign. This number must appear on all communication and documentation of any nature dealing with this campaign.

### DEALER RESPONSIBILITY

It is the dealer's responsibility to check Service COMM or Dealer Business Systems (DBS) National Service History for the campaign status on each vehicle falling within the range of this voluntary emissions recall which for any reason enters the service department. This includes vehicles purchased from private parties or presented by transient (tourist) owners and vehicles in a dealer's inventory. **Federal law requires that new vehicles in dealer inventory which are the subject of an emissions recall must be corrected prior to sale. Failure to do so can result in civil penalties.** While federal law applies only to new vehicles, Nissan strongly encourages dealers to correct any used vehicles in their inventory before they are retailed.

Nissan Bulletins are intended for use by qualified technicians, not 'do-it-yourselfers'. Qualified technicians are properly trained individuals who have the equipment, tools, safety instruction, and know-how to do a job properly and safely. **NOTE:** If you believe that a described condition may apply to a particular vehicle, DO NOT assume that it does. See your Nissan dealer to determine if this applies to your vehicle.

## REPAIR OVERVIEW



## SPECIAL TOOL

Spark Plug Tool J-48891



Figure 1

- Additional tools can be obtained from Tech•Mate: 1-800-662-2001 or [nissantechmate.com](http://nissantechmate.com).

## IMPORTANT

### Attention California Dealers

An Emission Recall Campaign Completion (ERCC) label must be filled out by the technician performing the repair, and then attached to the underside of the vehicle hood. A sample of the label is shown below.

Technician: Fill in here either:  
 “Inspected vehicle per campaign ID # PC716”  
 or  
 “Repaired vehicle per campaign ID # PC716”  
 (as it applies)

Fill in “DEALER CODE” and “DATE”  
 Put “ARB/EPA” under “CHANGE AUTHORITY”

**NISSAN MOTOR CORPORATION**  
**AUTHORIZED MODIFICATIONS**

THE FOLLOWING MODIFICATIONS HAVE BEEN MADE:

---



---

THESE MODIFICATIONS HAVE BEEN APPROVED  
AS APPROPRIATE BY EPA AND CARB

DEALER CODE:	DATE:
CHANGE AUTHORITY:	NIS-UHL-16

Figure 2

California law prohibits owners from renewing their California registration if emissions related recall work has not been performed. California dealers are now required to issue a proof of correction certificate to vehicle owners upon completion of emissions related recall work. Please fill out one of the campaign completion forms for each owner that has this campaign performed. Instruct owners to keep this certificate unless they are requested to mail it to the DMV. A sample of the form is shown in Figure 3 below.

Vehicle Emission Recall - Proof of Correction
 Orange colored

License Number	Make	Model Year	Body Type	Vehicle Identification Number
				<input style="width: 15px; height: 15px; border: 1px solid black;" type="text"/> <input style="width: 15px; height: 15px; border: 1px solid black;" type="text"/> <input style="width: 15px; height: 15px; border: 1px solid black;" type="text"/> <input style="width: 15px; height: 15px; border: 1px solid black;" type="text"/> <input style="width: 15px; height: 15px; border: 1px solid black;" type="text"/> <input style="width: 15px; height: 15px; border: 1px solid black;" type="text"/> <input style="width: 15px; height: 15px; border: 1px solid black;" type="text"/> <input style="width: 15px; height: 15px; border: 1px solid black;" type="text"/> <input style="width: 15px; height: 15px; border: 1px solid black;" type="text"/> <input style="width: 15px; height: 15px; border: 1px solid black;" type="text"/> <input style="width: 15px; height: 15px; border: 1px solid black;" type="text"/> <input style="width: 15px; height: 15px; border: 1px solid black;" type="text"/> <input style="width: 15px; height: 15px; border: 1px solid black;" type="text"/> <input style="width: 15px; height: 15px; border: 1px solid black;" type="text"/> <input style="width: 15px; height: 15px; border: 1px solid black;" type="text"/> <input style="width: 15px; height: 15px; border: 1px solid black;" type="text"/> <input style="width: 15px; height: 15px; border: 1px solid black;" type="text"/> <input style="width: 15px; height: 15px; border: 1px solid black;" type="text"/> <input style="width: 15px; height: 15px; border: 1px solid black;" type="text"/> <input style="width: 15px; height: 15px; border: 1px solid black;" type="text"/>

**Manufacturer** \_\_\_\_\_ **Recall Number** \_\_\_\_\_

The above described vehicle has been repaired, modified and/or equipped with new emission control devices to meet applicable California Emission Control Laws.

<b>Dealer's Name</b>	<b>Address, City, State, Zip</b>
<b>Date</b>	<b>Dealership's Authorized Signature</b> <b>X</b>

Return this certificate to DMV only when required - otherwise retain for your records.

CAEMRC 1-20

Figure 3

#### NOTE:

- These forms (item number **CAEMRC 1-20**) and labels (item number **NIS-UHL-16**) are available from Nissan Publications (1-800-247-5321) at no charge.
- When either item (form or label) is ordered, you will automatically receive the other item as well.

## SERVICE PROCEDURE

1. Altima (if applicable): Remove the three (3) bolts, and then remove the engine room cover.

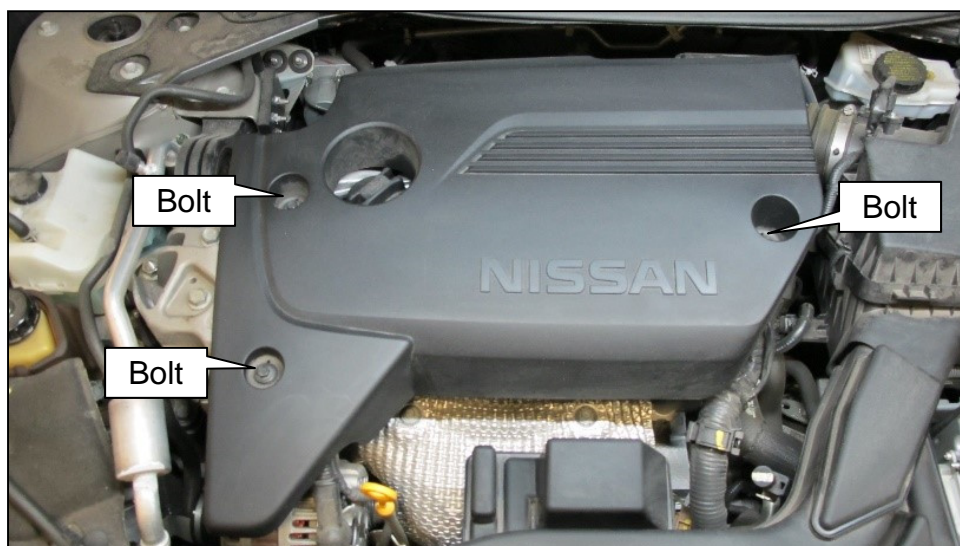


Figure 4

2. Locate the serial number on the cylinder head.

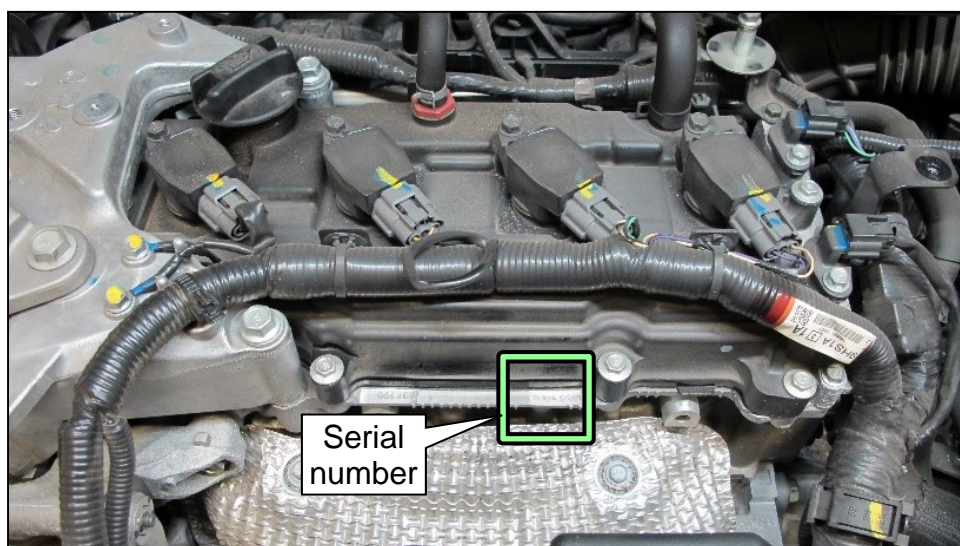


Figure 5

3. Write down the first four (4) alpha-numeric characters on the repair order.  
**NOTE:** The serial number is upside down when read from the front of the vehicle.

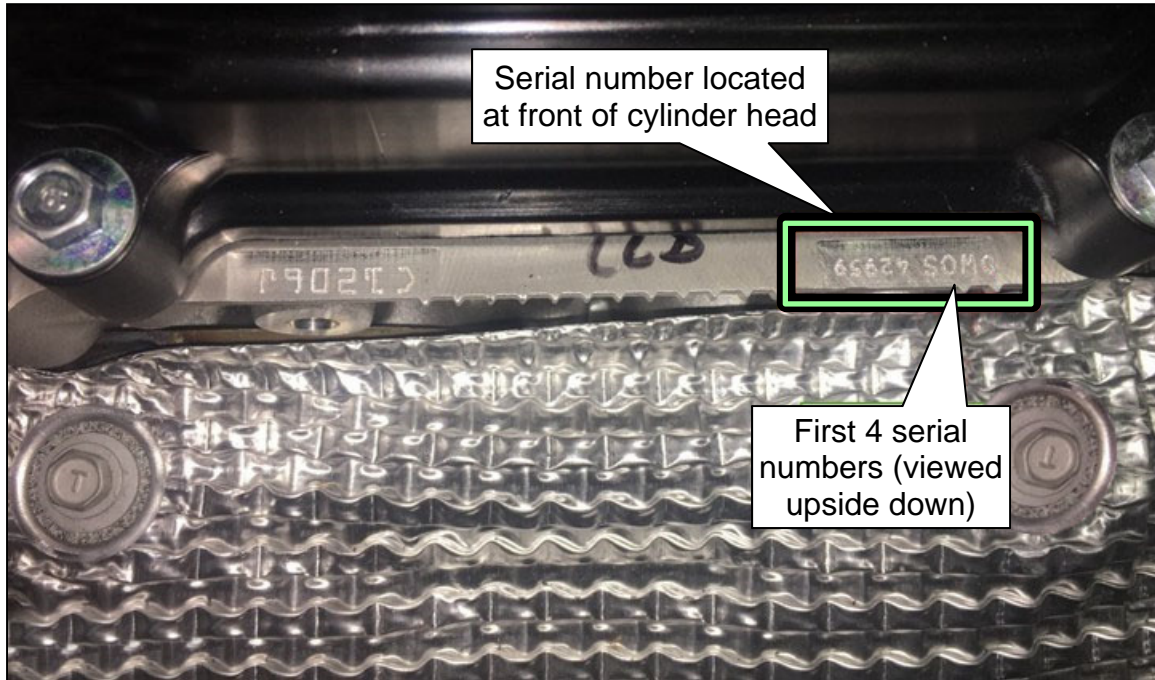


Figure 6

4. Go to ASIST and select **Tech Support Info / Bulletin Support Items**.

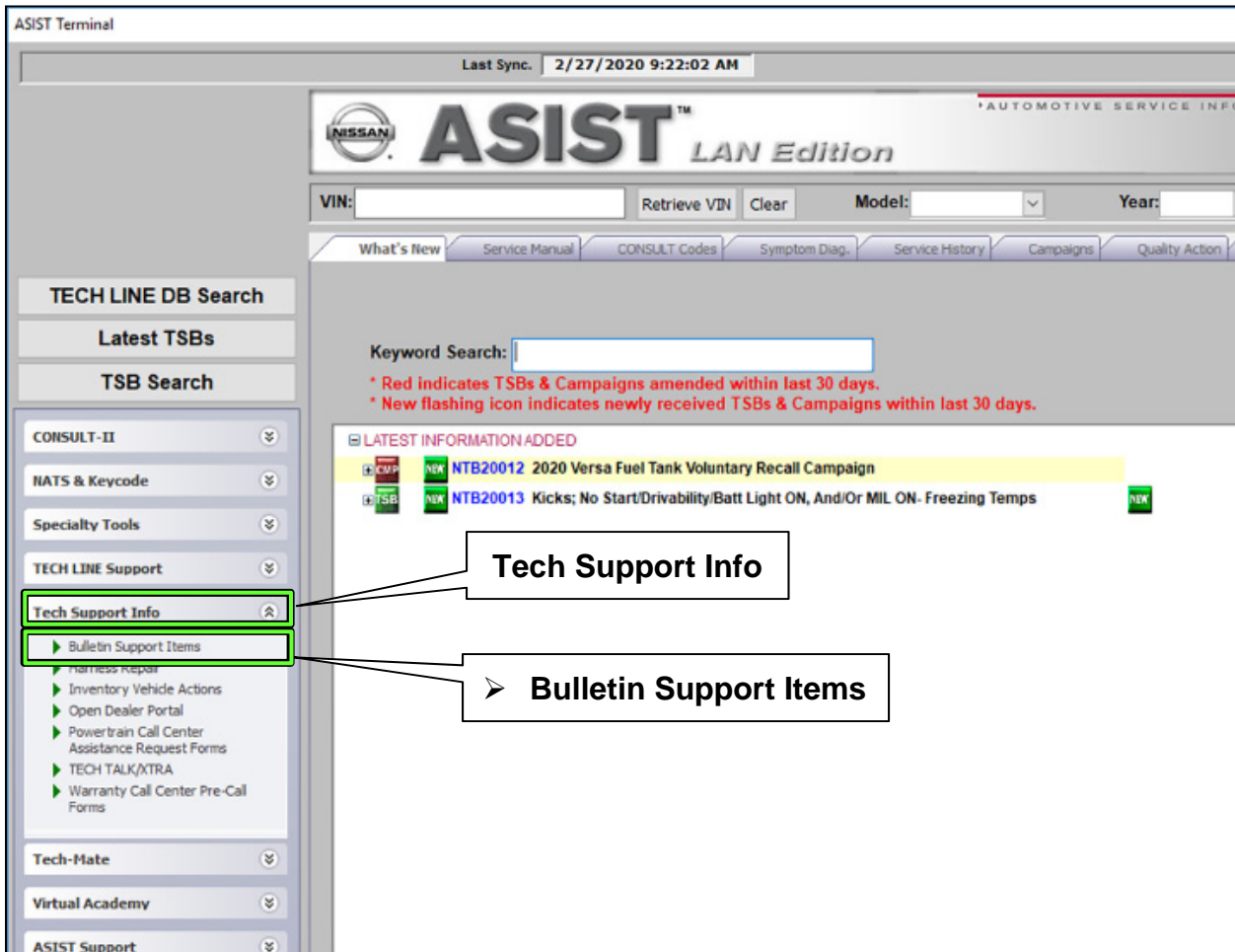


Figure 7

5. Select **CLICK HERE...** (for **PC716-2018 Altima/Rogue Cylinder Head Serial Number Inspection**).

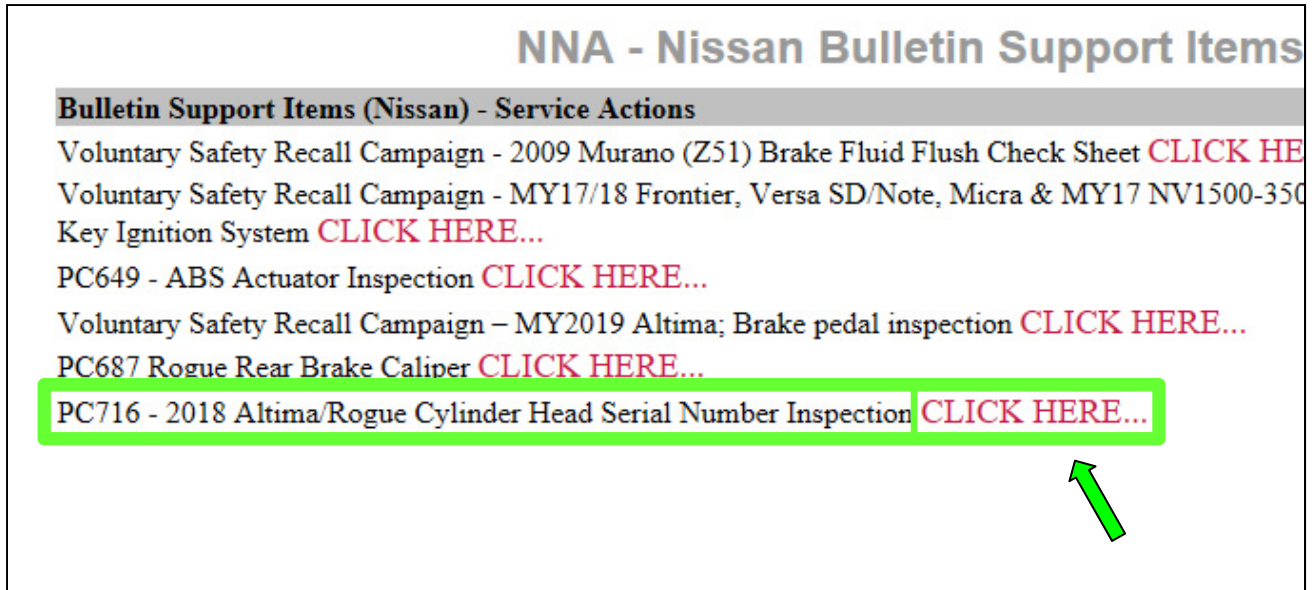


Figure 8

6. Type in the **VIN** and the first four (4) digits of the **Serial Number**, and then select **Check**.

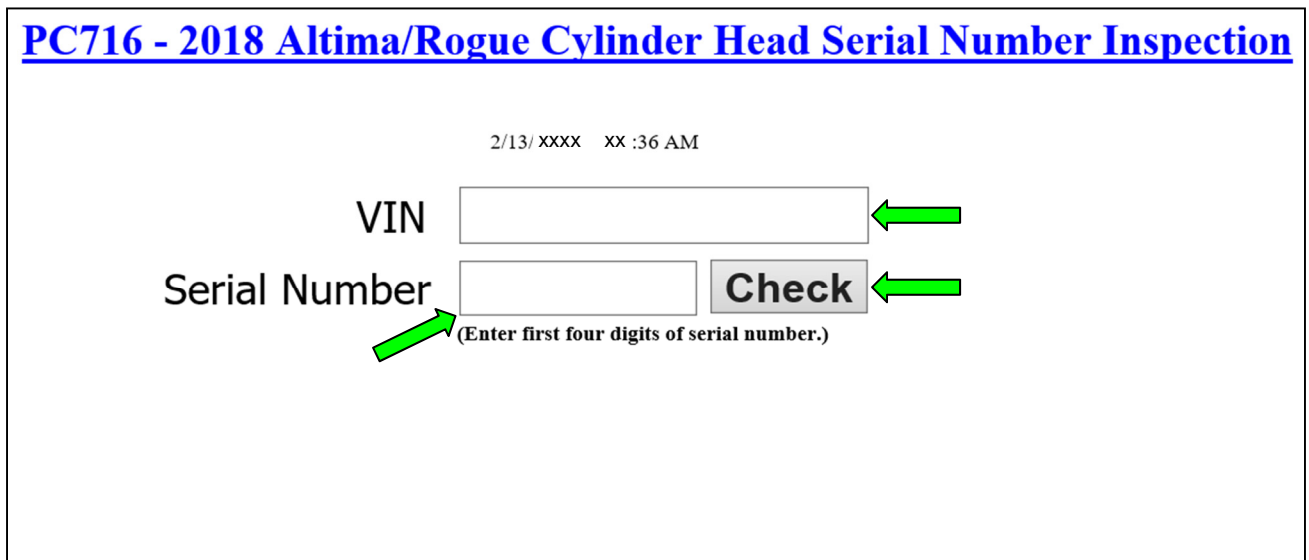


Figure 9

- If the screen in Figure 10 displays, no repairs are needed. Print the screen by selecting **Print**, and then go to **CLAIMS INFORMATION** on the last page.
  - Attach the print-out to the repair order.

**PC716 - 2018 Altima/Rogue Cylinder Head Serial Number Inspection**

2/13/ xxxx xx :33 PM

VIN

Serial Number

(Enter first four digits of serial number.)

Submit INSPECT ONLY claim per Campaign Bulletin.  
 “Inspection is OK. No further action is required.”

←

Figure 10

- If the screen in Figure 11 displays, print the screen by selecting **Print**, and then go to step 7.
  - Attach the print-out to the repair order.

**PC716 - 2018 Altima/Rogue Cylinder Head Serial Number Inspection**

2/13/ xxxx xx :56 AM

VIN

Serial Number

(Enter first four digits of serial number.)

“Inspection is NG, please continue with spark plug inspection per Campaign Bulletin. Print this screen and attach to your repair order.”

←

Figure 11



**IMPORTANT:** Follow all cautions, warnings, and notes in the ESM when working in the engine compartment.

7. Remove all four (4) spark plugs.
  - a. **Label each spark plug with its related cylinder number (for example, write "1" with a marker on the # 1 cylinder spark plug).**
    - Altima: For spark plug removal procedure, go to the Electronic Service Manual (ESM), section **ENGINE-ENGINE - MECHANICAL - QR25DE - PERIODIC MAINTENANCE - SPARK PLUG.**
    - Rogue: For spark plug removal procedure, go to the ESM, section **ENGINE-ENGINE - MECHANICAL - PERIODIC MAINTENANCE - SPARK PLUG.**
8. Visually inspect the electrode area of the spark plugs from cylinders # 1 and # 2 (refer to the example in Figure 12).
  - Is the # 1 or # 2 spark plug darker in color when compared to the # 3 or # 4 spark plugs?

**NO** (spark plugs are not darker): **OK**. Go to step 9.

**YES** (spark plug[s] are darker): **NG**. Skip to step 11.

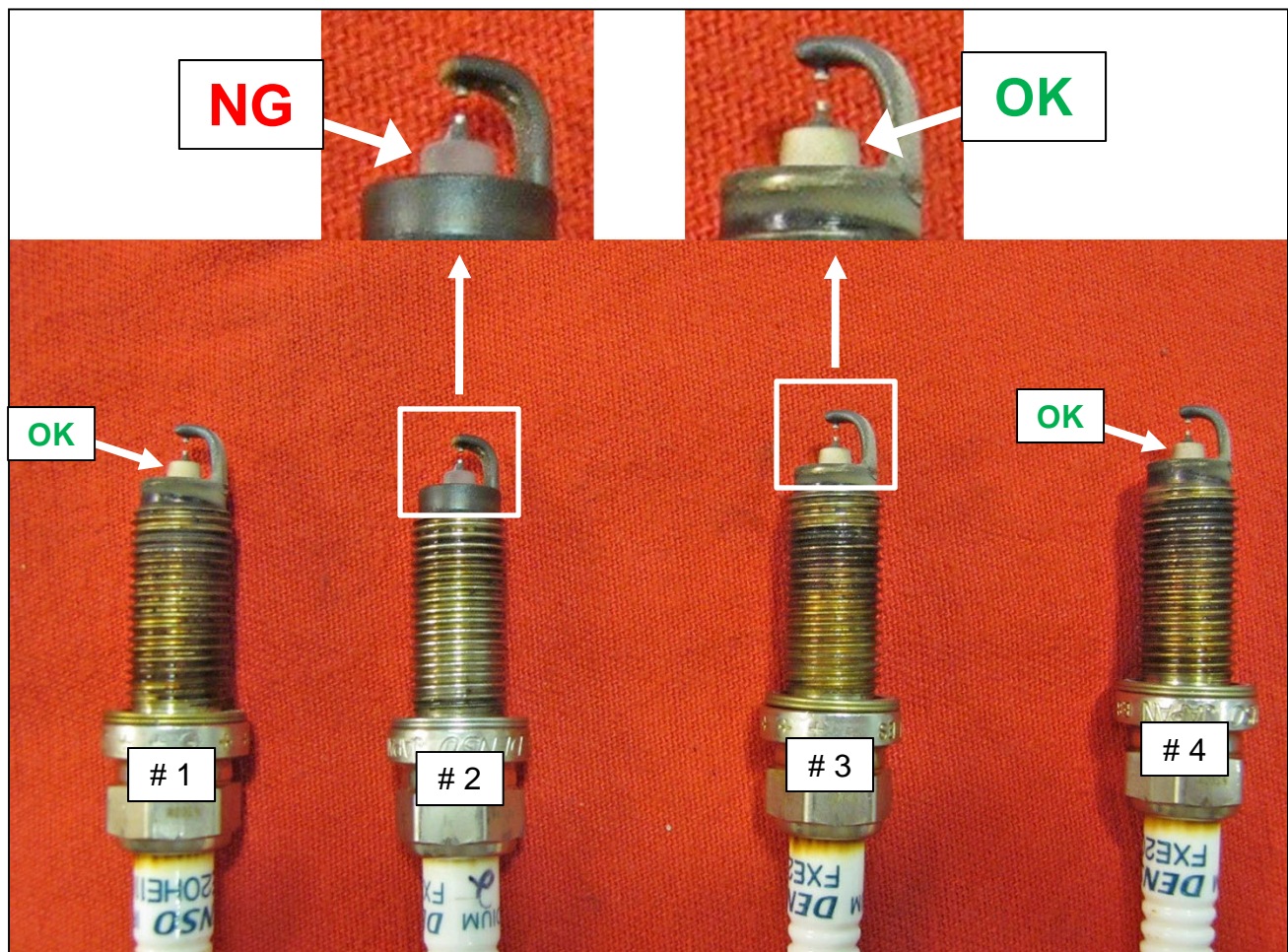


Figure 12

9. The spark plugs are **OK**: Reinstall the spark plugs into the same cylinders they were removed from using tool J-48891.

- Spark plug torque: 19.6 N•m (2.0 kg-m, **14 ft-lbs**)
- Altima: For spark plug installation procedure, go to the ESM, section **ENGINE-ENGINE - MECHANICAL - QR25DE - PERIODIC MAINTENANCE - SPARK PLUG**.
- Rogue: For spark plug installation procedure, go to the ESM, section **ENGINE-ENGINE - MECHANICAL - PERIODIC MAINTENANCE - SPARK PLUG**.

**NOTICE**

Do not drop or shock the spark plugs or ignition coils. Spark plugs and ignition coils become damaged when dropped or shocked. Discard any spark plug or ignition coil which has been dropped or shocked and replace it with a new one.

10. Reinstall the engine room cover (if equipped). Then, go to **CLAIMS INFORMATION** on the last page.

11. The spark plug(s) are **NG**: Replace the following:

- Long engine assembly
  - Refer to the next page for warranty related information.
- Exhaust manifold and three-way catalyst
- Air fuel ratio (A/F) sensor 1
- Heated (rear) oxygen sensor 2
  - Altima: For replacement of the parts listed above, go to the ESM, section **ENGINE-ENGINE - MECHANICAL - QR25DE - UNIT REMOVAL AND INSTALLATION - ENGINE ASSEMBLY**.
  - Rogue: For replacement of the parts listed above, go to the ESM, section **ENGINE-ENGINE - MECHANICAL - UNIT REMOVAL AND INSTALLATION - ENGINE ASSEMBLY**.

## Warranty Related Information When Replacing Long Engine Assembly

Record a **short**, continuous video (15 seconds or less) that includes the following:

- Cylinder head serial number
- All four (4) spark plugs with labels indicating which cylinder they were installed
- The VIN (vehicle identification number) on the F.M.V.S.S. certification label (VIN label)

Make sure the continuous video has a clear image of the incident area(s) of the serial number, spark plugs, and the VIN on the VIN label.

- **The video needs to be less than 8 mb in size.**

Complete the PCC Preauthorization Form in ASIST.

- See the pre-selection screen below.

Powertrain Call Center Pre-Call Start Screen

Dealer Code

17 Digit VIN

PreCall Form

CVT

Engine

LEAF

Update Existing Case

LEAF Repair Complete

Next

Fill out these two lines, select "Engine", and then select Next

Figure 13

Attach the video and parts list to the Preauthorization Form.

After submitting the Preauthorization Form with the attached video and parts list, call the PCC at **800-973-9992 (opt 1)** for repair pre-approval to replace:

- The long engine assembly (with oil and oil filter, coolant, etc.).

## PARTS INFORMATION

### Altima (QR25DE):

DESCRIPTION	PART NUMBER	QUANTITY
GASKET-MANIFOLD TO CYLINDER HEAD	14035-3TA0B	1
GASKET-ADAPTER	16175-JA00A	1
GASKET-EXHAUST MANIFOLD,A	14036-3TA0B	1
SEAL-O RING	16618-FU460	4
CLAMP INJECTOR	17571-5L30B	4
SEAL-O RING	16618-5L300	4
GASKET - EXHAUST	20691-19U0A	1
GASKET-EXHAUST	20692-24U0A	1
NUT	01223-N0021	3
SEAL O-RING	21049-ZL80A	1
SEAL-O RING	22131-JA00C	1
SEAL-O RING	22131-EN205	2
BOLT HUB RUN	40263-3TA0C	2
NUT-HEX	40262-2Y00A	2
PIN-COTTER	40073-0L700	2
SEAL OIL-DIFFER	38342-3VX0B	1
SEAL OIL-DIFFER	38342-3VX0A	1
O-RING - A/C	92474-N823A	2
O-RING - A/C	92472-N823A	2
PIN - COTTER, SPLIT	08921-3202A	2
ENGINE-BARE (long engine assembly)	10102-4JK2P	1
COCK - WATER DRAIN	21440-50Y00	1
NUT - HEX	08911-6421A	2
NUT	54588-JA060	2
NUT	01225-N2011	2
NUT	48634-JA00A	2
BOLT	14069-JD70A	11
PILOT - CONVERTER	12330-16A0A	1
MANIFOLD ASSY - EXHAUST W / CATALYST	140E2-3TA0A	1
MANIFOLD ASSY - EXHAUST W / CATALYST	140E2-9HS0A	1
AIR FUEL RATIO SENSOR	22693-3TY0B	1
HEATED OXYGEN SENSOR	226A0-3TA0B	1
Nissan Genuine Nissan Full Synthetic Motor Oil (0W-20) (1)	999PK0-00W20N	5 quarts
Nissan <b>Blue</b> Extended Life ANTIFREEZE/COOLANT (1)	999MP-L25500P	2 gallons
Nissan NS-3 (CVT) Fluid (1)	999MP-CV0NS3	6 quarts

- (1) Order these items through the Nissan Maintenance Advantage program: Phone 877-NIS-NMA1 (877-647-6621). Website order via link on the dealer portal; [www.NNAnet.com](http://www.NNAnet.com) and click on the "Maintenance Advantage-Tire/Battery/Chemical" link.

**PARTS INFORMATION (continued)**

**Rogue (FWD and AWD):**

DESCRIPTION	PART NUMBER	QUANTITY
GASKET-ADAPTER	16175-JA00A	1
GASKET-MANIFOLD TO CYLINDER HEAD	14035-3TA0C	1
GASKET-EXHAUST MANIFOLD,A	14036-3TA0B	1
SEAL-O RING	16618-5L300	4
SEAL-O RING	16618-FU460	4
CLAMP INJECTOR	17571-5L30B	4
GASKET - EXHAUST	20691-19U0A	1
GASKET-EXHAUST	20692-8H30A	2
SEAL O-RING	21049-ZL80A	1
SEAL-O RING	22131-JA00C	1
SEAL-O RING	22131-EN205	1
BOLT HUB RUN	40263-3TA0C	2
NUT-HEX	40262-2Y00A	2
PIN-COTTER	40073-0L700	2
O-RING - A/C	92474-N823A	2
O-RING - A/C	92472-N823A	2
ENGINE-BARE (long engine assembly)	10102-4BA0C	1
COCK - WATER DRAIN	21440-5V000	1
NUT	54588-JA060	2
NUT	40262-JA000	2
BOLT	14069-JD70A	11
NUT	01225-N2011	5
STUD	14064-JG30B	3
STUD	14064-ZX60A	5
NUT	14094-9BA0A	5
NUT	48634-JA00A	2
PILOT - CONVERTER	12330-16A0A	1
MANIFOLD ASSY - EXHAUST W / CATALYST (1)	140E2-6FJ0A	1
AIR FUEL RATIO SENSOR (2)	22693-5RB0A	1
HEATED OXYGEN SENSOR	226A0-9BF0B	1
<b>AWD only</b> - SEAL OIL-DIFFER	38342-3VX0A	1
<b>FWD only</b> - SEAL OIL DIFFER	38342-3VX0B	1
<b>AWD only</b> - NUT	01223-N0021	5
<b>AWD only</b> - BOLT-FIX PROPELLER SHAFT	37120-JD00B	4
<b>AWD only</b> - NUT-FIX PROPELLER SHAFT	37171-7S00A	4
Nissan Genuine Nissan Full Synthetic Motor Oil (0W-20) (3)	999PK0-00W20N	5 quarts
Nissan <b>Blue</b> Extended Life ANTIFREEZE/COOLANT (3)	999MP-L25500P	2 gallons
Nissan NS-3 (CVT) Fluid (3)	999MP-CV0NS3	6 quarts

(1) For vehicles built from 09/2016 to 08/2018.

(2) For vehicles built 09/2017 and later.

(3) Order these items through the Nissan Maintenance Advantage program: Phone 877-NIS-NMA1 (877-647-6621). Website order via link on the dealer portal; [www.NNAnet.com](http://www.NNAnet.com) and click on the "Maintenance Advantage-Tire/Battery/Chemical" link.

**CLAIMS INFORMATION**

Submit a “CM” line claim using the following claims coding:

<b>MODEL</b>	<b>CAMPAIGN (“CM”) ID</b>	<b>DESCRIPTION</b>	<b>OP CODE</b>	<b>FRT</b>
<b>ALL</b>	<b>PC716</b>	Inspect Cylinder Head Serial Number – OK	PC7160	0.2 hrs
		Inspect Cylinder Head Serial Number And Spark Plugs – OK	PC7161	0.4 hrs
Inspect Cylinder Head Serial Number And Spark Plugs – Replace Long Engine, Exhaust Manifold And Three Way Catalyst, Front Exhaust Tube, A/F Fuel Ratio Sensor 1, and Oxygen Sensor		PC7162	10.0 hrs	
<b>Rogue FWD</b>		Inspect Cylinder Head Serial Number And Spark Plugs – Replace Long Engine, Exhaust Manifold And Three Way Catalyst, Front Exhaust Tube, A/F Fuel Ratio Sensor 1, and Oxygen Sensor	PC7163	10.5 hrs
<b>Rogue AWD</b>		Inspect Cylinder Head Serial Number And Spark Plugs – Replace Long Engine, Exhaust Manifold And Three Way Catalyst, Front Exhaust Tube, A/F Fuel Ratio Sensor 1, and Oxygen Sensor	PC7164	10.8 hrs

**AMENDMENT HISTORY**

<b>PUBLISHED DATE</b>	<b>REFERENCE</b>	<b>DESCRIPTION</b>
March 31, 2020	NTB20-025	Original bulletin published