 HYUNDAI Technical Service Bulletin	GROUP BODY ELECTRICAL	NUMBER 20-BE-004H
	DATE MARCH, 2020	MODEL(S) ELANTRA (ADa)
SUBJECT: HEADLAMP REPLACEMENT AND AIMING ADJUSTMENT		

Description: Some 2019 & 2020 Elantra (ADa) vehicles equipped with halogen headlights may experience intermittent operation of the high beam. This bulletin provides the service procedure to replace the left and right headlamp assemblies and perform aiming adjustments.

NOTE:

ADa are vehicles with VIN starting with a number, for example 5NPD84LF...



Applicable Vehicles: Certain 2019-2020MY Elantra (ADa) produced from 9/10/2018 – 12/10/2019 equipped with halogen headlights.

Parts Information:

PART NAME	PART NUMBER	PART IMAGE
Headlamp	92101-F3500 (ADa,LH) 92102-F3500 (ADa,RH)	

Warranty Information:

MODEL	OP. CODE	OPERATION	OP. TIME	CAUSAL PART	NATURE	CAUSE
Elantra (ADa)	00DA10R0	HEADLAMP REPLACEMENT AND AIMING (BOTH SIDES)	0.9 M/H	92101-F3500	I11	ZZ3

NOTE 1: Submit Claim on Campaign Claim Entry Screen

NOTE 2: If a part is found in need of replacement while performing the repair for this TSB, and the affected part is still under warranty, please submit a separate claim using the same Repair Order. If the affected part is out of warranty, submit a prior approval request for goodwill consideration prior to performing the work.

Service Procedure:**HEADLAMP REPLACEMENT**

1. Align the vehicle onto the lift. Do not lift the vehicle up.



2. If applicable, record the customer's radio preset stations for AM/FM/XM.
3. Turn the wheel fully to the left or the right.

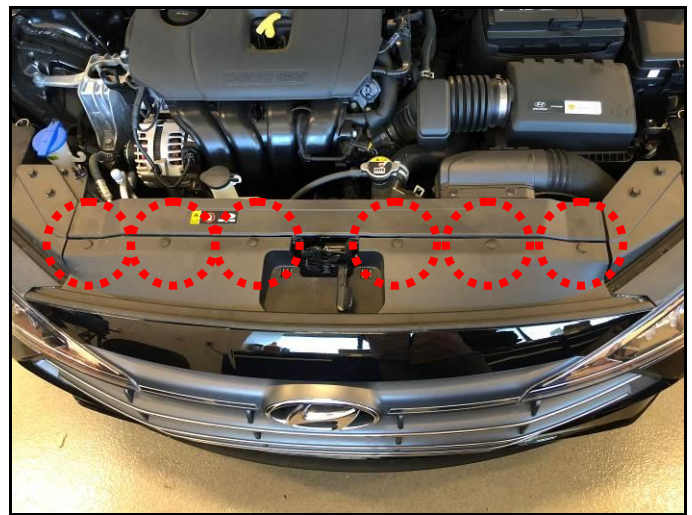


4. Open the hood and disconnect the negative (-) cable on the battery.

**Negative battery terminal tightening torque:
3.0~4.4 lb-ft (4.0~6.0 Nm, 0.4~0.6 kgf.m)**



5. Remove the six front bumper upper mounting clips.

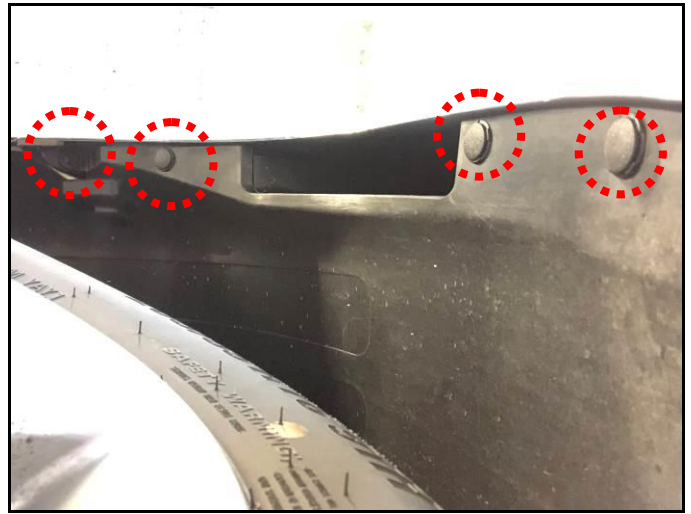


6. Lift the vehicle to comfortable working height.



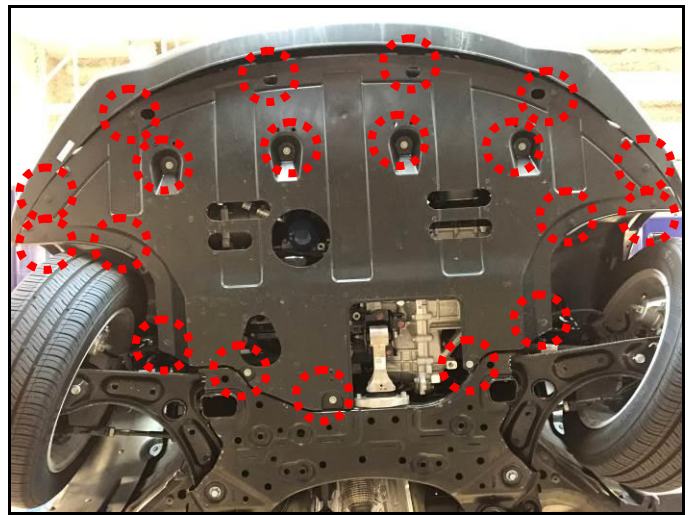
7. Remove one Phillips screw and three mounting clips from front inner fender liner.

Perform the procedure to both the driver and passenger side.

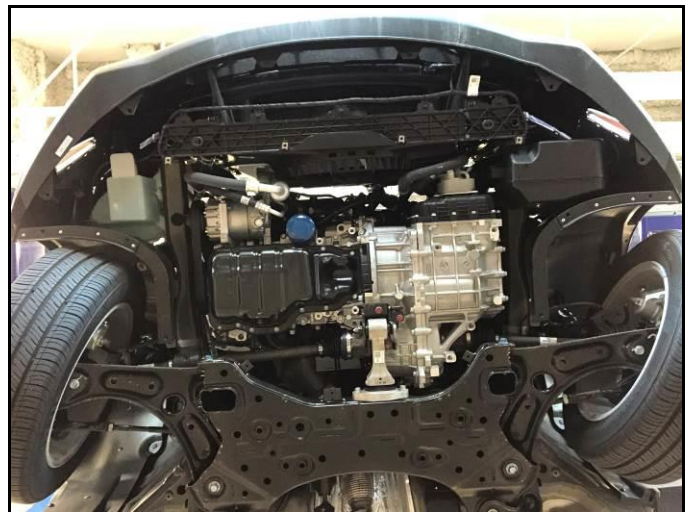


8. Remove the 12 mounting clips and seven 10mm bolts from the front under cover.

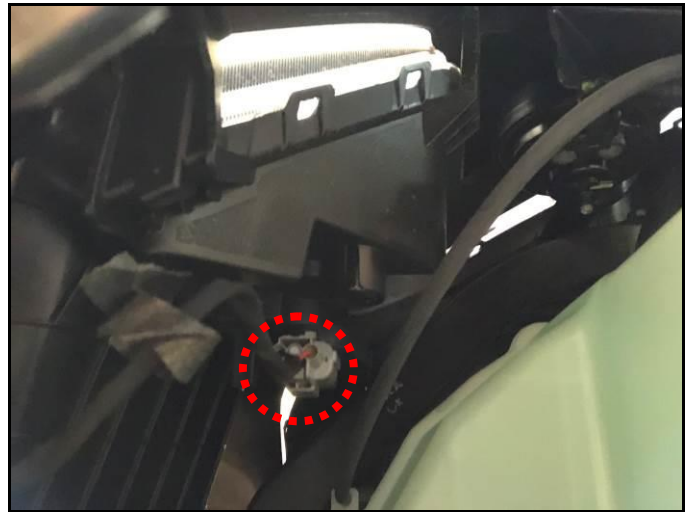
Tightening Torque for 10mm bolt:
2.9 ~ 4.3 lb-ft (3.9 ~ 5.9 Nm, 0.4 ~ 0.6 kgf.m)



9. Remove the front under cover.

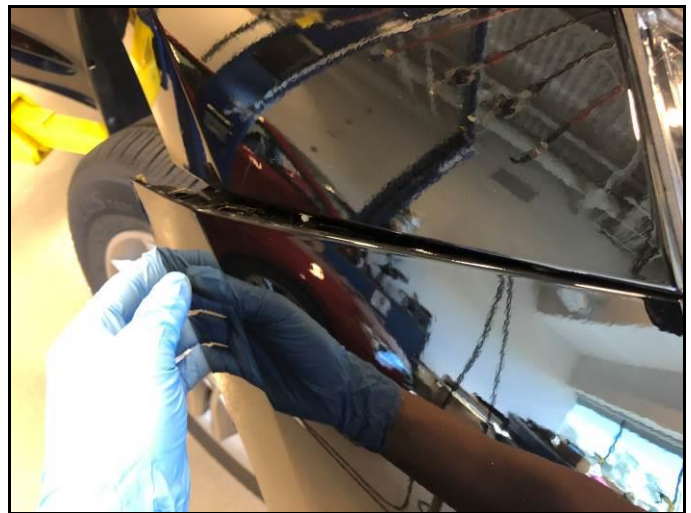


10. From under the vehicle, disconnect the driver and passenger turn signal light connectors.



11. Remove the front bumper.

Carefully pull the driver and passenger bumper cover corners first, and then remove the front bumper from the center.



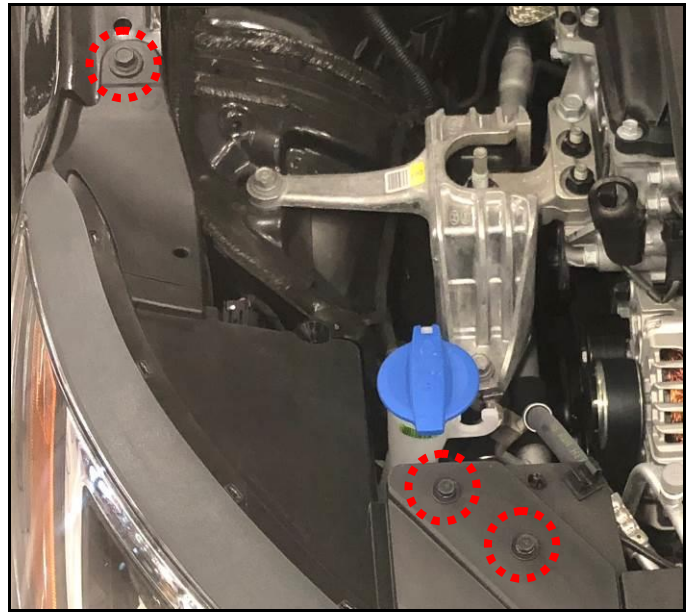
12. Disconnect the driver and passenger headlamp connectors.



13. Remove the three headlamp mounting bolts.

**Tightening Torque for 10mm bolt:
2.9 ~ 4.3 lb-ft (3.9 ~ 5.9 Nm, 0.4 ~ 0.6 kgf.m)**

**Tightening Torque for 12mm bolt:
5.1 ~ 8.0 lb-ft (6.9 ~ 10.8 Nm, 0.7 ~ 1.1 kgf.m)**



14. Remove the headlamp by carefully pulling it outward.



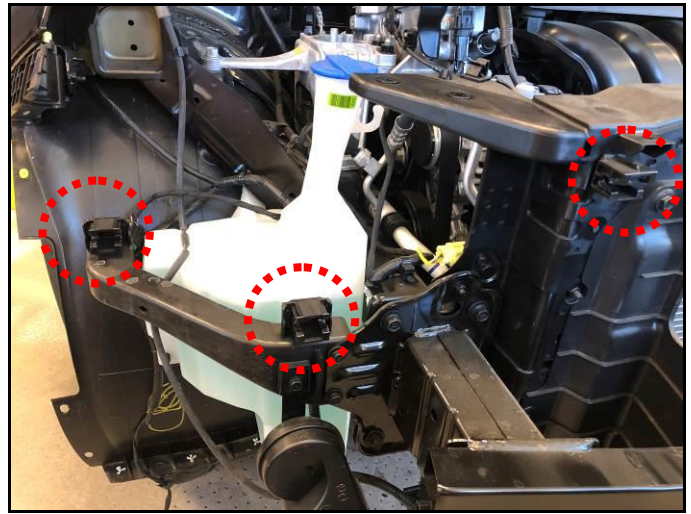
15. Remove the protective plastic film from the new headlamps.



16. Install the new headlamp and reinstall all removed parts in reverse order.

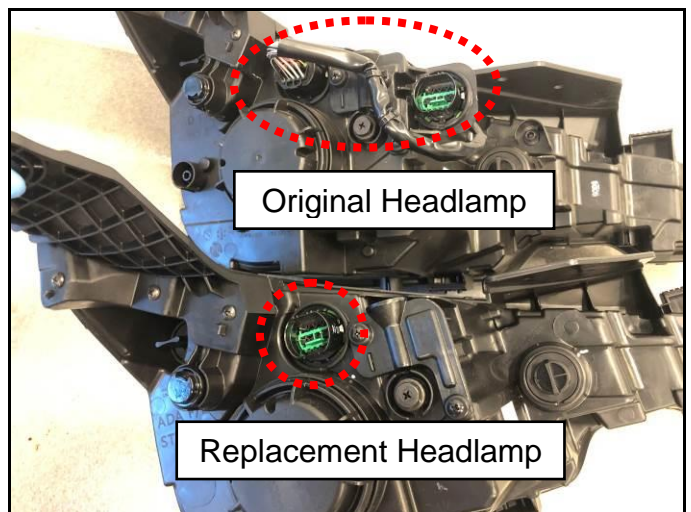
NOTICE

When installing the driver and passenger headlamps, align the three headlamp tabs and hooks. Carefully push forward. Ensure the locking tabs are fully inserted into the hooks.



NOTICE

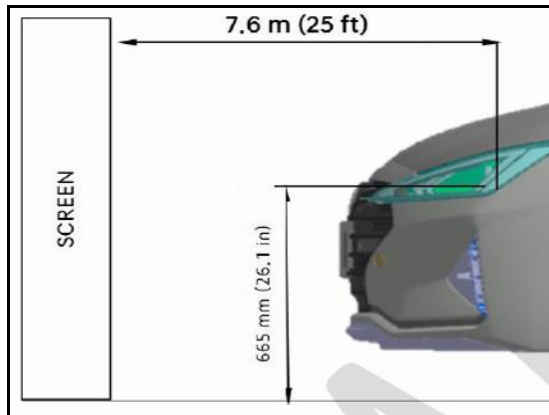
The driver side replacement headlamp assembly will not include the extension pigtail harness. The extension pigtail harness is not needed.



HEADLAMP AIMING ADJUSTMENT

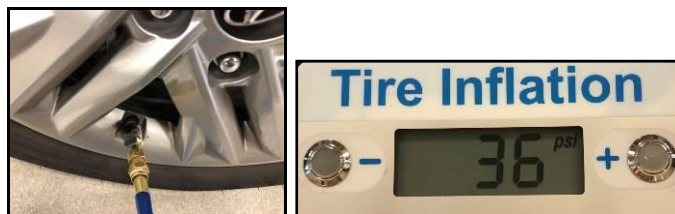
NOTICE

To perform the headlamp aiming check and adjustment, a distance of 25 feet is required between the vehicle and wall or screen. Vehicle must also be on a flat surface.

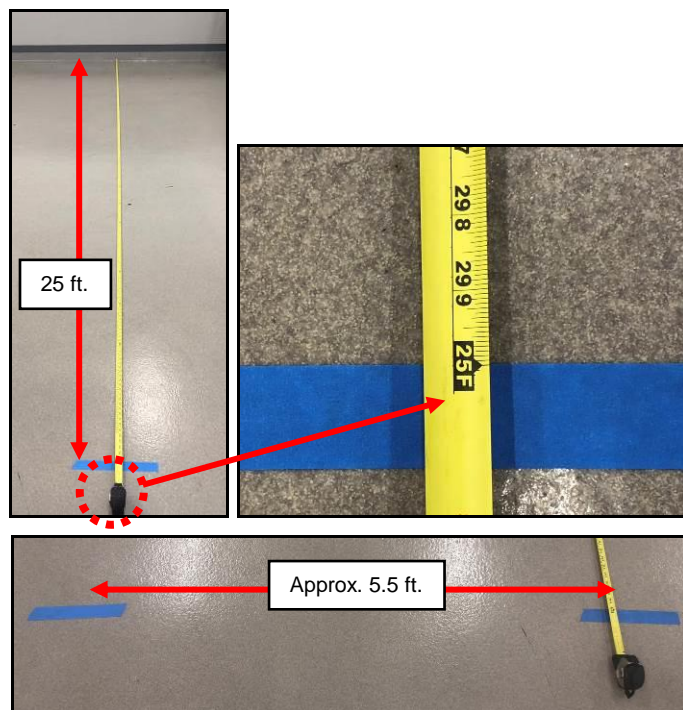


1. Park the vehicle on a flat surface in front of a screen or wall.
2. Check the front and rear tires pressure to ensure it is inflated to the correct pressure (36psi).

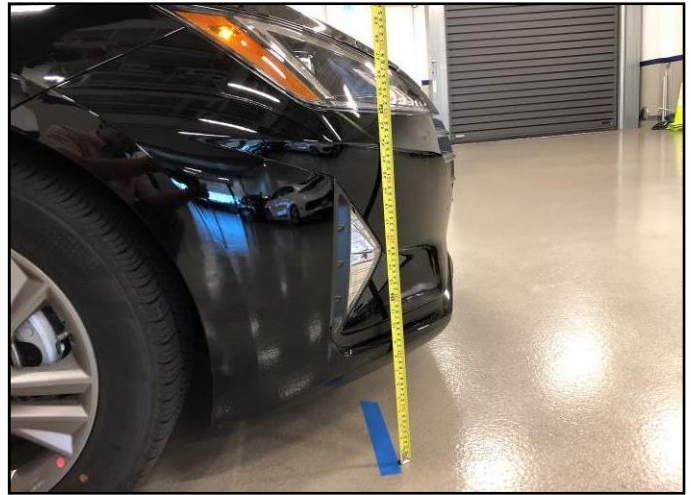
Adjust the tire pressure by inflating or deflating as necessary.



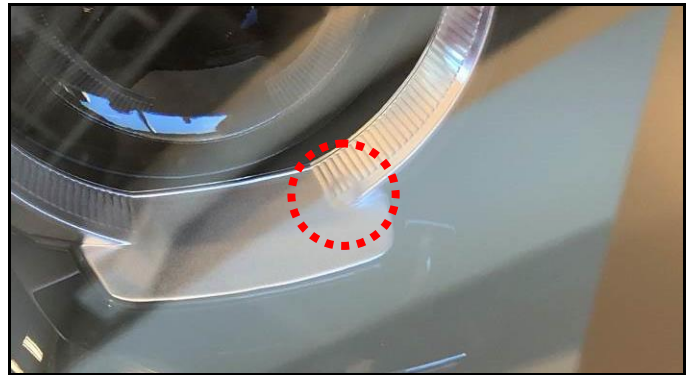
3. Measure 25 ft. from the wall and place two pieces of masking tape or two marks approximately 5.5 ft. apart from each other onto the floor.



4. Drive the vehicle toward the two marks/tapes on the floor and align it to the center of the headlight bulb.



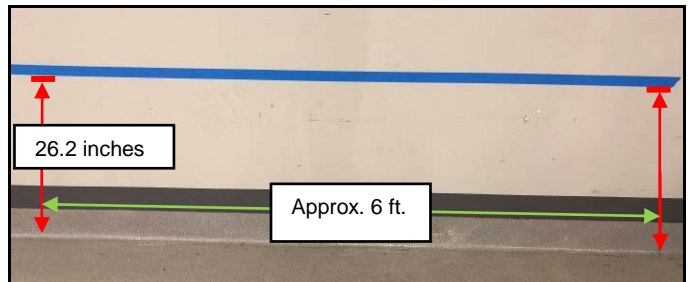
The center point for the light bulb is the circle imprinted on the headlights. It may be difficult to see the imprinted circle, so viewing from different angles is required.



5. On the wall/screen, make two vertical marks of approximately 6ft. apart and at a height of 26.2 inches.

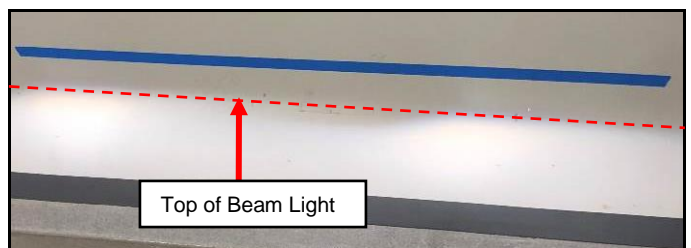


Connect the two marks on the wall/screen using masking tape or a marker.



6. Turn the ignition switch to the ON position and turn ON the headlamp.

Confirm if the top of the beam light is at the line on the wall. If not, adjust the beam by following the procedure described in the next step.

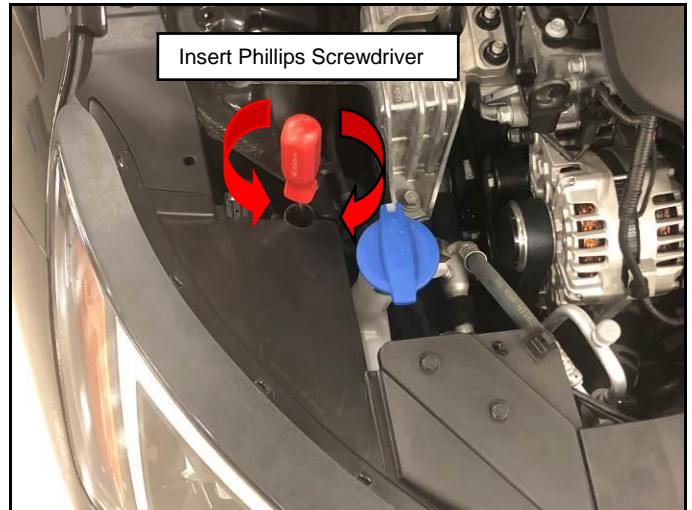


7. Insert a Phillips screwdriver into the adjusting hole and turn it clockwise or counterclockwise.

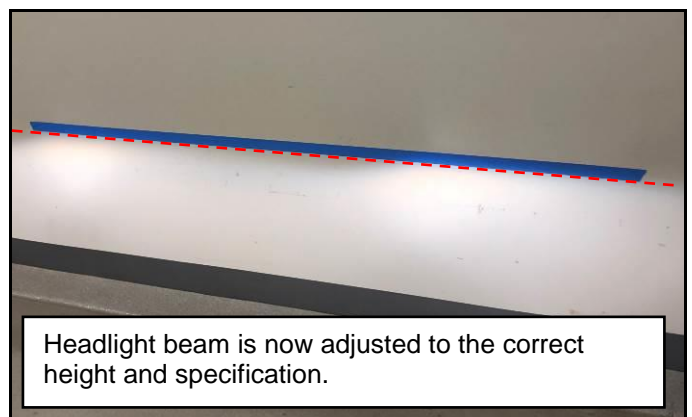
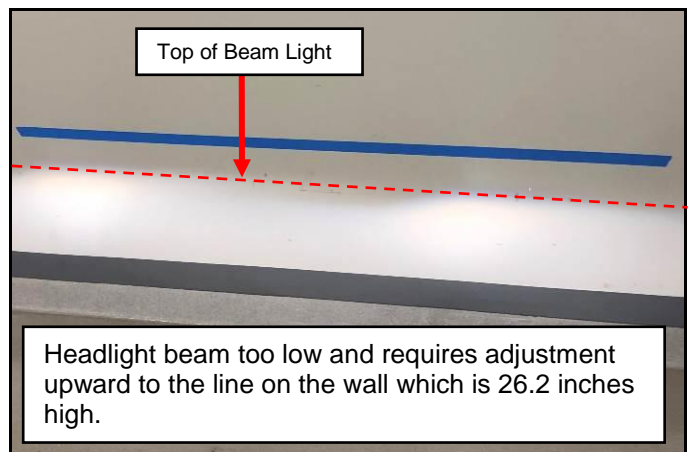
Turning the screwdriver clockwise will bring the beam upward and counterclockwise will bring the beam downward.

NOTICE

Perform the headlamp beam adjustment with no one sitting in the driver or passenger seat.



Example



SUBJECT:**HEADLAMP REPLACEMENT AND AIMING ADJUSTMENT**

For ease of adjustment for another Elantra (ADa), make a mark or tape on the floor using the alignment of the wheel center cap.

It is easier to align the wheel center cap than center point of the headlamp light bulb.

Mark both sides of the vehicle as shown in the picture to the right.

