



HYUNDAI

Technical Service Bulletin

GROUP Interior	NUMBER 20-BD-005H
DATE March, 2020	MODEL(S) Sonata (DN8a)


SUBJECT: INSIDE DOOR HANDLE REPAIR

Description: This bulletin describes the procedure to repair an inside door handle exhibiting noise when opening the door.



Applicable Vehicles: Certain 2020 Sonata (DN8a) vehicles produced from 10/25/19 – 11/19/19

Parts Information:

PART NAME	PART NUMBER	IMAGE	QTY	REMARK
I/S Repair Kit	12493-05101FFF		1	2 washers & 2 screws included

Warranty Information:

MODEL	OP CODE	OPERATION	OP TIME	CAUSAL PART(S)	NATURE CODE	CAUSE CODE
Sonata (DN8a)	90CA15I0	Inside Handle Scrub Inspection ONLY, LH & RH	0.3 M/H	82610-L1000-NNB 82620-L1000-NNB	Q57	ZZ1
	90CA15R0	Inside Handle Scrub Inspection & Repair, RH	0.5 M/H	82620-L1000-NNB	Q57	ZZ1
	90CA15R1	Inside Handle Scrub Inspection & Repair, LH	0.5 M/H	82610-L1000-NNB	Q57	ZZ1
	90CA15R2	Inside Handle Scrub Inspection & Repair, LH & RH	0.8 M/H	82610-L1000-NNB 82620-L1000-NNB	Q57	ZZ1

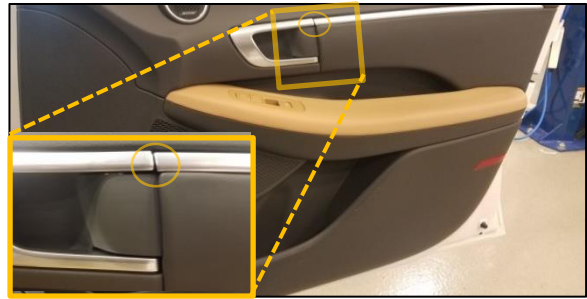
NOTE 1: Submit Claim on Campaign Entry Screen.

NOTE 2: If a part is in need of replacement while performing the repair for this TSB and the affected part is still under warranty, please submit a separate claim using the same Repair Order. If the affected part is out of warranty, submit a Prior Approval Request for goodwill consideration prior to performing the work.

Circulate To: General Manager, Service Manager, Parts Manager, Warranty Manager, Service Advisors, Technicians, Body Shop Manager, Fleet Repair

Service Procedure:

1. Inspect the area where the inside door handle meets the chrome accent. If the inside door handle is slightly raised above the door trim, repair is required.



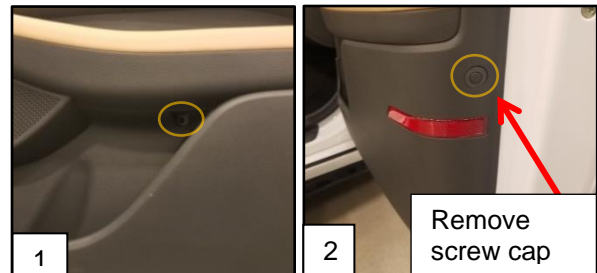
2. Insert a **0.3mm feeler gage** into the gap between the door handle and the chrome accent for inspection.

If the inside handle is flush or slightly lower than the door trim, the gap should have a measurement of 0.3mm (or more). If the measurement is below 0.3mm, repair is required.

**NOTICE**

If the door handle is higher than the chrome accent, repair the door trim even if the gap measures at or larger than **0.3mm**.

3. Remove the two door trim screws.
The screw cap for the second screw must be removed.



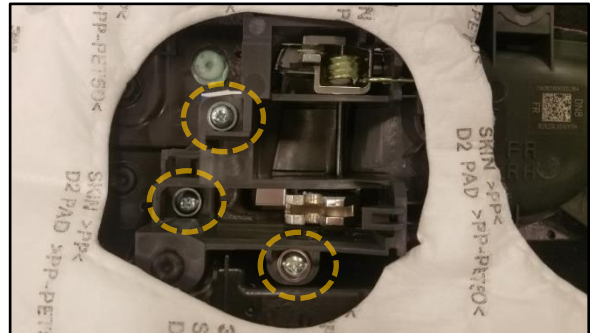
4. Remove the door panel from the door.
Disconnect all electrical connectors from the door panel.



5. Locate the inside door handle assembly.



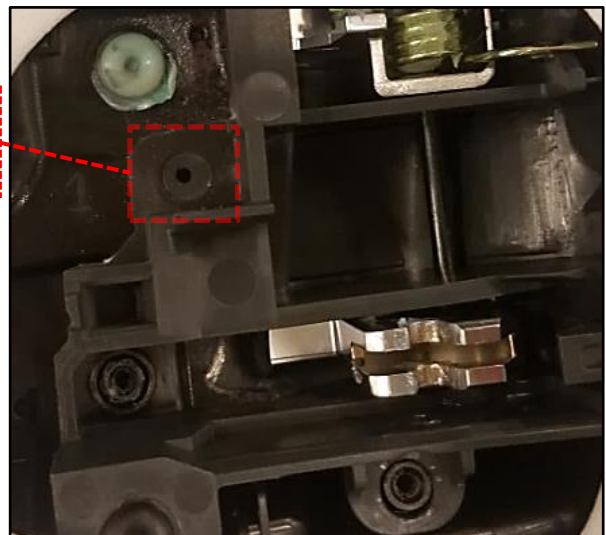
6. Remove the screws from the inside door handle assembly.



7. Use a flathead screwdriver to lift the indicated area of the inside door handle assembly.



8. Insert the repair kit washer behind the lifted inside door handle area.



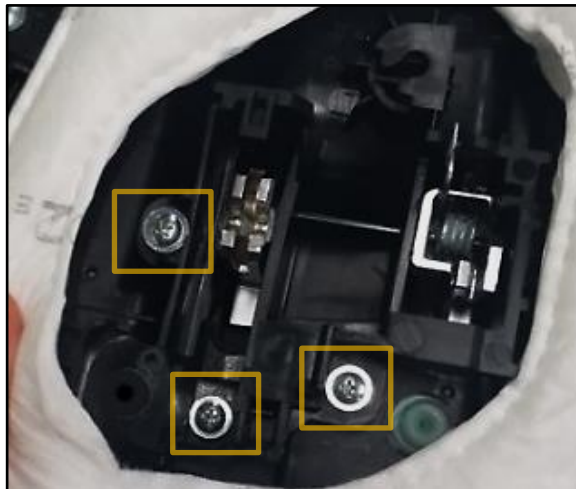
- 9. Verify that the new washer sits flush behind the screw ear.

Reinstall the screws with the new washer in place.

Reinstall the door panel assembly in reverse of the removal procedure.

NOTICE

If the washer cannot be positioned behind the inside door handle assembly, proceed to the alternate method below.

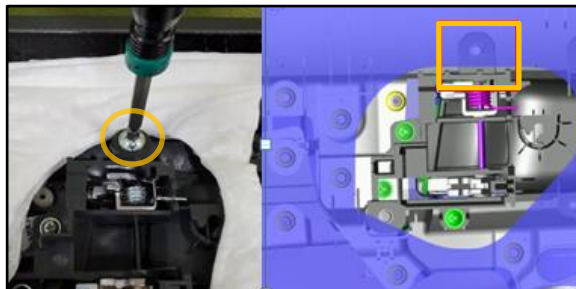


- A. **Alternate Method**

Remove the heat welded tab with a utility knife, then insert the metal washer underneath the door handle assembly.



- B. Insert the repair kit screw into the former heat welded tab.



- C. Reinstall the door panel in reverse of the removal process.

- D. The service procedure is now complete.