



Service Bulletin

Bulletin No.: 20-NA-027

Date: February, 2020

TECHNICAL

Subject: Malfunction Indicator Lamp (MIL) Illuminated - DTC P2635 Set

This bulletin replaces PIT5727. Please discard PIT5727.

Brand:	Model:	Model Year:		VIN:		Engine:	Transmission:
		from	to	from	to		
Chevrolet	Equinox	2020	2020			LTG	
Holden	Equinox						
GMC	Terrain						

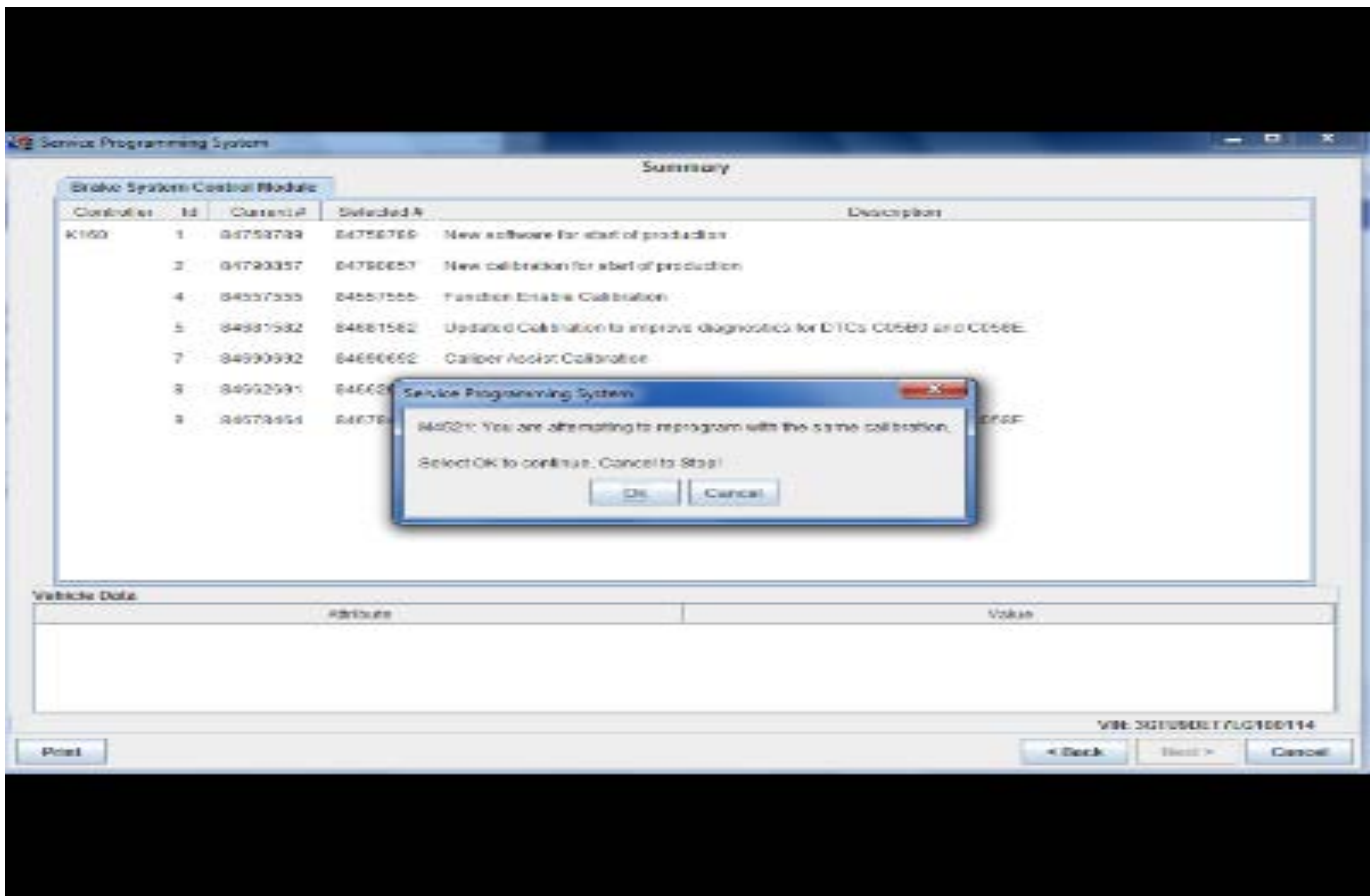
Involved Region or Country	North America, Middle East, Israel, Australia/New Zealand
Additional Options (RPOs)	Equipped with CHASSIS DRIVE LINE-FRONT WHEEL DRIVE (FWD)
Condition	Some customers may comment that the MIL is illuminated. Some technicians may find DTC P2635 (Fuel Pump Flow Performance) stored in the Fuel Pump Driver Control Module.
Cause	This condition may be caused by the ECM detecting higher than expected fuel tank pump pressure.
Correction	Check fuel tank pump pressure at idle: <ul style="list-style-type: none"> • If the pressure is higher than 58 psi (400 KPA), reprogram the ECM with the latest calibration. • If the fuel pressure at idle is below 58 psi (400 KPA), refer to SI for further diagnostics.

Service Procedure

Caution: Before downloading the update files, be sure the computer is connected to the internet through a network cable (hardwired). DO NOT DOWNLOAD or install the files wirelessly. If there is an interruption during programming, programming failure or control module damage may occur.

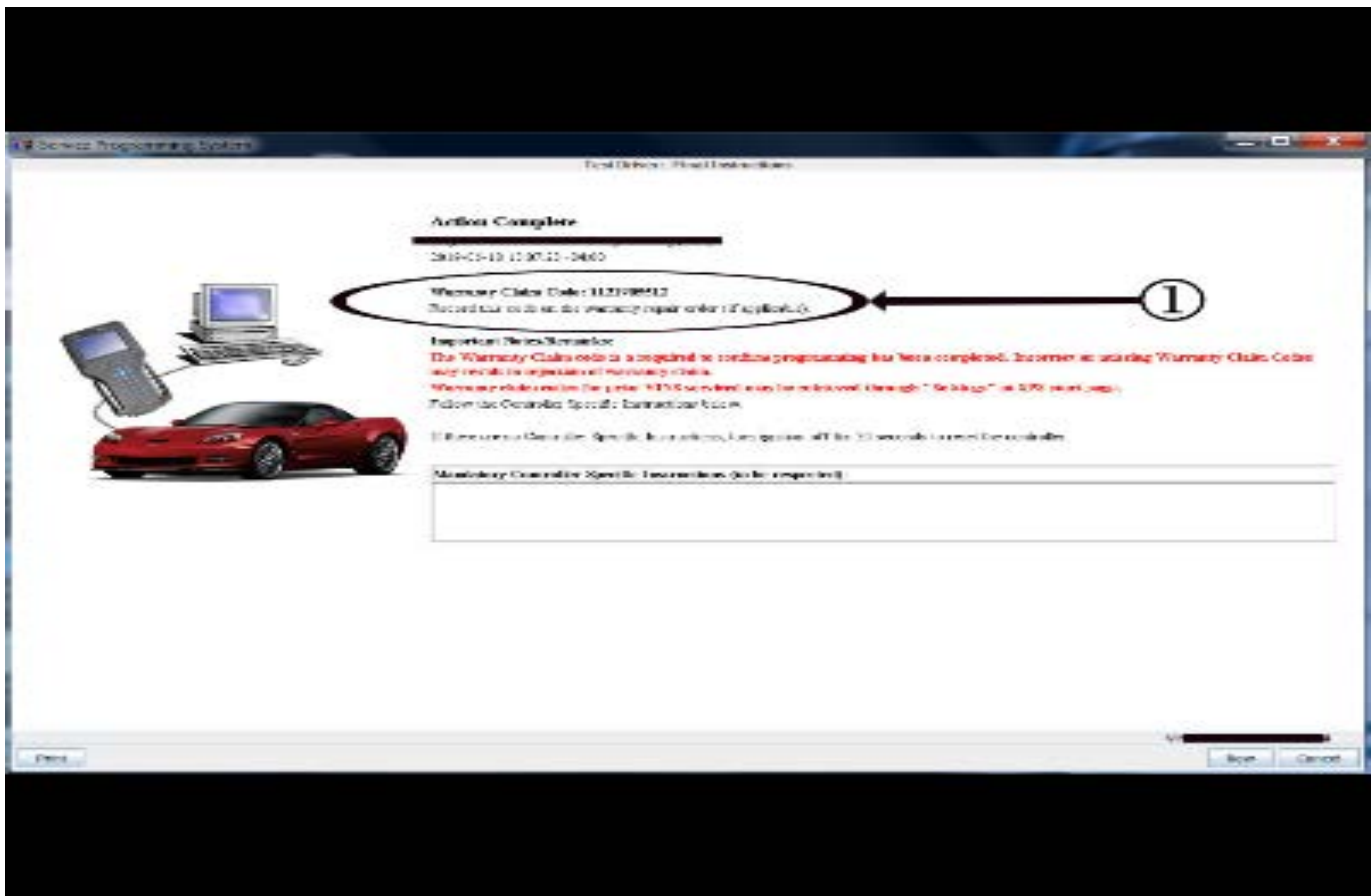
Important: Carefully read and follow the instructions below.

- Ensure the programming tool is equipped with the latest software and is securely connected to the data link connector. If there is an interruption during programming, programming failure or control module damage may occur.
- Stable battery voltage is critical during programming. Any fluctuation, spiking, over voltage or loss of voltage will interrupt programming. Install a GM Authorized Programming Support Tool to maintain system voltage. Refer to www.gmdesolutions.com for further information. If not available, connect a fully charged 12 V jumper or booster pack disconnected from the AC voltage supply. DO NOT connect a battery charger.
- Turn OFF or disable systems that may put a load on the vehicles battery such as; interior lights, exterior lights (including daytime running lights), HVAC, radio, etc.
- Clear DTCs after programming is complete. Clearing powertrain DTCs will set the Inspection/Maintenance (I/M) system status indicators to NO.



Important: If the Same Calibration/Software Warning is noted on the SPS screen, select OK and follow screen instructions. After a successful programming event, the WCC is located in the Service Programming System dialogue box of the SPS Summary screen. No further action is required. Refer to the Warranty section of the bulletin.

1. Reprogram the Engine Control Module. Refer to *K20 Engine Control Module: Programming and Setup* in SI. Modify as required (e.g., select x module from the controller screen). Then provide step-by-step instructions or refer to SI procedure.



5431209

Important: To avoid warranty transaction rejections, you **MUST** record the warranty claim code provided on the SPS Warranty Claim Code (WCC) screen on the job card. Refer to callout 1 above for the location of the WCC on the SPS screen

2. Record SPS Warranty Claim Code on job card for warranty transaction submission.

Parts Information

No parts are required for this repair.

Warranty Information

For vehicles repaired under the Emission coverage, use the following labor operation. Reference the Applicable Warranties section of Investigate Vehicle History (IVH) for coverage information.

Labor Operation	Description	Labor Time
2886668*	Check Fuel Tank Pump Pressure and Engine Control Module Reprogramming with SPS	0.4 hr

*This is a unique Labor Operation for Bulletin use only.

Important: **To avoid warranty transaction rejections, carefully read and follow the instructions below:

- The SPS Warranty Claim Code must be accurately entered in the "SPS Warranty Claim Code" field of the transaction.
- When more than one Warranty Claim Code is generated for a programming event, it is required to document all Warranty Claim Codes in the "Correction" field on the job card. Dealers must also enter one of the codes in the "SPS Warranty Claim Code" field of the transaction, otherwise the transaction will reject. It is best practice to enter the FINAL code provided by SPS.

Warranty Claim Code Information Retrieval

If the SPS Warranty Claim Code was not recorded on the Job Card, the code can be retrieved in the SPS system as follows:

1. Open TIS on the computer used to program the vehicle.
2. Select and start SPS.
3. Select Settings.
4. Select the Warranty Claim Code tab.

The VIN, Warranty Claim Code and Date/Time will be listed on a roster of recent programming events. If the code is retrievable, dealers should resubmit the transaction making sure to include the code in the SPS Warranty Claim Code field.

Version	1
Modified	Released February 14, 2020

