



# Service Bulletin

Bulletin No.: 19-NA-220

Date: February, 2020

## TECHNICAL

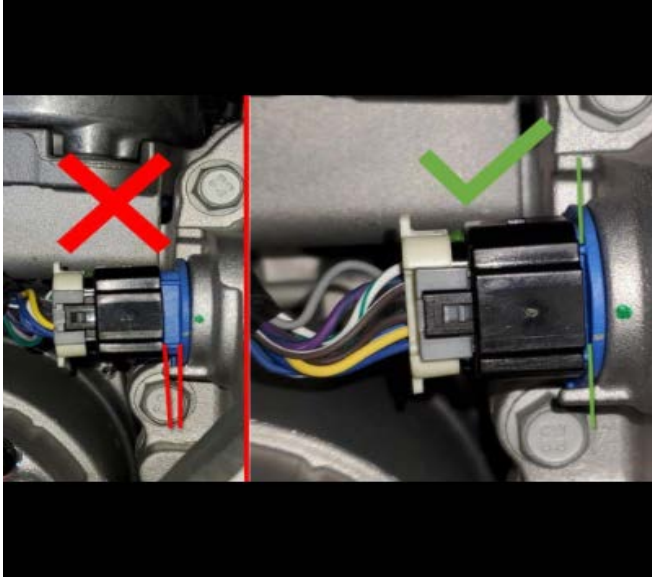
**Subject: Loss of Propulsion, Malfunction Indicator Lamp (MIL) Illuminated - DTC P0A3F and/or P1B03 Set**

**This bulletin replaces PIP5641D. Please discard PIP5641D.**

Brand:	Model:	Model Year:		VIN:		Engine:	Transmission:
		from	to	from	to		
Chevrolet	Bolt EV	2017	2020			All	All

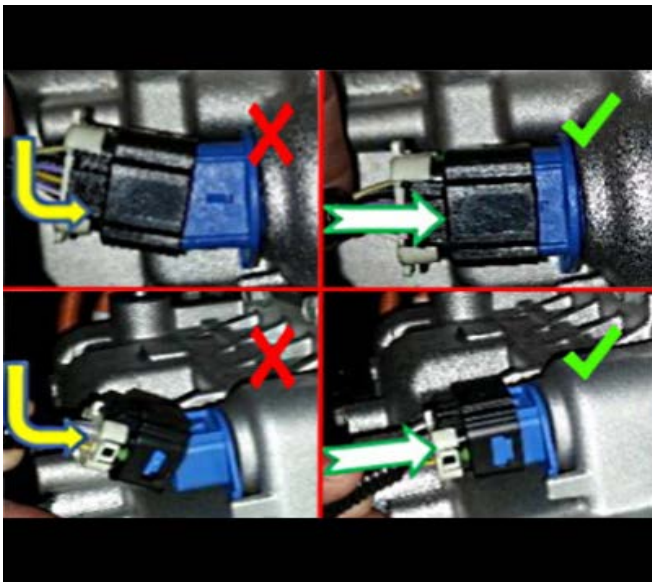
<b>Involved Region or Country</b>	North America, Middle East, South Korea, Brazil
<b>Condition</b>	<p>Some customers may comment that a loss of propulsion was experienced.</p> <p>⇒ The vehicle may operate normally after the vehicle is restarted at a later time. History code P0A3F and sometimes P1B03 may set.</p> <p>Some technicians may find one or both of the following DTCs set in the Hybrid/EV Powertrain Control Module:</p> <ul style="list-style-type: none"> <li>• P0A3F</li> <li>• P1B03</li> </ul>
<b>Cause</b>	<p>This condition may be caused by a spread terminal on the vehicle harness connection X2 on the T12 transmission assembly.</p> <p>⇒ The terminals may not have been perfectly aligned during installation at the vehicle assembly plant.</p>
<b>Correction</b>	<p>Replace the Engine Harness.</p> <p>Due to the sensitivity of resolver (motor position sensor) circuits, replacing the connector with a terminated lead is not permitted per SI document ID 4583435. These diagnostic codes result in a loss of propulsion event on the vehicle.</p> <p>Exercise care when connecting the new harness to X2 on the transmission by aligning the connector bodies and not attempt to install at an angle.</p>

Connector Examples



5518453

Ensure that the connector is fully seated.



5409322

Showing both proper and improper alignment of the X2 connector.



5409321

Example case of damaged terminals. Terminals do not need to have visible damage to set DTCs P0A3F and P1B03.

Parts Information

Causal Part	Description	Part Number	Qty
X	Engine Harness with RPO CBT (DC Fast Charge capable)	42694828	1
X	Engine Harness without RPO CBT	42694829	1

Warranty Information

For vehicles repaired under the Voltec (V) coverage, use the following labor operation. Reference the Applicable Warranties section of Investigate Vehicle History (IVH) for coverage information.

Labor Operation	Description	Labor Time
5430940	Engine Wiring Harness Replacement	Use Published Labor Operation Time

Version	2
Modified	Released February 4, 2020 February 17, 2020 – Added the 2020 Model Year, removed the VIN breakpoint, added Brazil to the Involved Region or Country section and added an additional comparison graphic.

