



**NUMBER:** 18-017-20

**GROUP:** 18 - Vehicle Performance

**DATE:** February 22, 2020

*This bulletin is supplied as technical information only and is not an authorization for repair. No part of this publication may be reproduced, stored in a retrieval system, or transmitted, in any form or by any means, electronic, mechanical, photocopying, or otherwise, without written permission of FCA US LLC.*

**SUBJECT:**

Flash: Powertrain Control Module (PCM) Updates

**OVERVIEW:**

This bulletin involves reprogramming the PCM with the latest available software.

**MODELS:**

2018 (B1) Jeep Renegade

**NOTE:** This bulletin applies to vehicles within the following markets/countries: LATAM.

**NOTE:** This bulletin applies to vehicles equipped with a 2.0L I4 Turbo Diesel Engine (Sales Code EBT).

**SYMPTOM/CONDITION:**

Customers may experience a Malfunction Indicator Lamp (MIL) illumination. Upon further investigation the technician may find the following Diagnostic Trouble Code (DTC) has been set:

- P0238-00 - Positive Boost Pressure Governor Deviation Low Pressure Signal Calculation Failure.

Customer may also notice:

- Erratic engine idle.
- Premature alternator pulley failure.

Other software enhancements include:

- Improvement to avoid soot formation in the intake system that can cause engine speed oscillation at idle.
- Improvement to the alternator strategy to prevent alternator pulley failure.

**DIAGNOSIS:**

Using a Scan Tool (wiTECH) with the appropriate Diagnostic Procedures available in DealerCONNECT/Service Library, verify all related systems are functioning as designed. If Diagnostic Trouble Codes (DTCs) or symptom conditions, other than the one listed are present, record the issues on the repair order and repair as necessary before proceeding further with this bulletin.

If the customer describes the symptom/condition listed above or if the technician finds the DTC, perform the Repair Procedure.

**PARTS REQUIRED:**

| Qty. | Part No.         | Description               |
|------|------------------|---------------------------|
| 1    | 7092362<br>LATAM | Homologation code sticker |

**REPAIR PROCEDURE:**

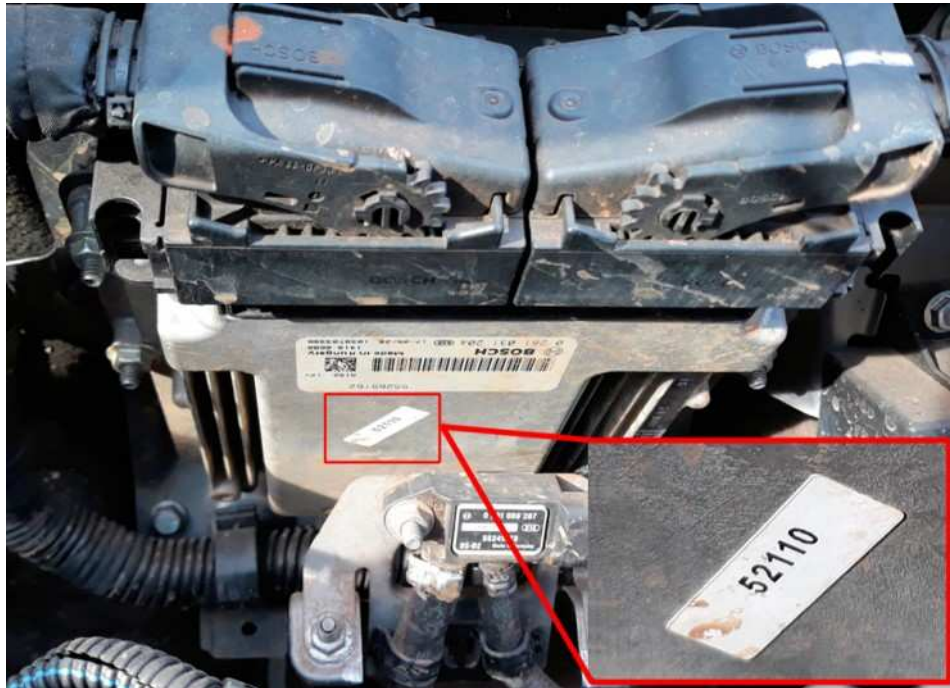
**NOTE:** The Transmission Control Module (TCM) must be updated to the latest available software at the conclusion of this repair procedure. Refer to all applicable published service bulletins for detailed repair procedures and labor times regarding updating the TCM software.

**NOTE:** Install a battery charger to ensure battery voltage does not drop below 13.2 volts. Do not allow the charging voltage to climb above 13.5 volts during the flash process.

**NOTE:** If this flash process is interrupted/aborted, the flash should be restarted.

1. Reprogram the PCM with the latest software. Detailed instructions for flashing control modules using the wiTECH Diagnostic Application are available by selecting the application's "HELP" tab.
2. Clear all DTCs that may have been set in any module due to reprogramming. The wiTECH application will automatically present all DTCs after the flash and allow them to be cleared.
3. Verify the TCM is programmed with the latest available software. Refer to all applicable published service bulletins for detailed repair procedures and labor times regarding updating the TCM software.
4. Remove the PCM to replace the PCM calibration code sticker (Fig. 1) , located on the PCM housing. Refer to the detailed service procedures available in DealerCONNECT >Service Library >TechCONNECT Under: 08 - Electrical/8E - Electronic Control Modules/Module, Powertrain Control (PCM)/Removal and Installation.

**NOTE:** If the sticker with calibration code is not present on the PCM, attach a new sticker on the same position as shown in (Fig. 1) .



**Fig. 1**  
**Homologation Code Sticker**

**POLICY:**

Reimbursable within the provisions of the warranty.

**TIME ALLOWANCE:**

| Labor Operation No: | Description   | Skill Category                    | Amount   |
|---------------------|---|-----------------------------------|----------|
| 18-19-06-Y3         | Module, Powertrain Control (PCM) - Reprogram and Install Homologation Sticker<br>(0 - Introduction) | 1 - Engine Repair and Performance | 0.4 Hrs. |

**NOTE:** The expected completion time for the flash download portion of this procedure is approximately 6 minutes. Actual flash download times may be affected by vehicle connection and network capabilities.

**FAILURE CODE:**

The dealer must use failure code CC with this Service Bulletin.

- If the customer's concern matches the SYMPTOM/CONDITION identified in the Service Bulletin, failure code CC is to be used.
- When utilizing this failure code the 3C's (customer's concern, cause and correction) must be provided for processing Service Bulletin flash/reprogramming conditions.

|    |                  |
|----|------------------|
| CC | Customer Concern |
|----|------------------|