



STAR ONLINE PUBLICATION

Case Number: S1805000006

Release Date: 02/24/2020

Symptom/Vehicle Issue: ESC Light Illuminated. DTC C1252-92 VACUUM PUMP CONTROL CIRCUIT And Or P258B ELECTRONIC VACUUM PUMP PERFORMANCE

Discussion: If ABS has C1252-92 Active or Stored do not replace the brake system module (ABS). PCM may also have set P258B-00. The faults are pointing to vacuum pump system having an issue maintaining vacuum levels. Please check the vacuum pump operation, fusing, wiring, and connector for proper functionality. Poor connections, spread pins, damaged connectors are possible causes.

Perform the diagnostic for the DTC P258B regardless if it is set or not, since it is more compressive of a test than C1252-92.

In addition when checking Vacuum lines, please ensure to check Vacuum hoses and check valves between the engine intake, booster and vacuum pump. Because the check valves only allow flow of air on one direction, each vacuum circuit must be checked separately to make sure there are no leaks, kinks or damages. Please refer to the correct vacuum diagram.

For KL vehicles: inspect ALL under hood grounds for connection and contact issues.

This document does not authorize warranty repairs. This communication documents a record of past experiences. STAR Online does not provide any conclusions about what is wrong with the vehicle. Rather, it captures all previous cases known that appear to be similar or related to the vehicle symptom / condition. You are the expert, and you are responsible for deciding on the appropriate course of action.

Contact STAR Center, or your Technical Assistance Center Via TechCONNECT or eCONTACT ticket if no solution is found

STAR ONLINE PUBLICATION

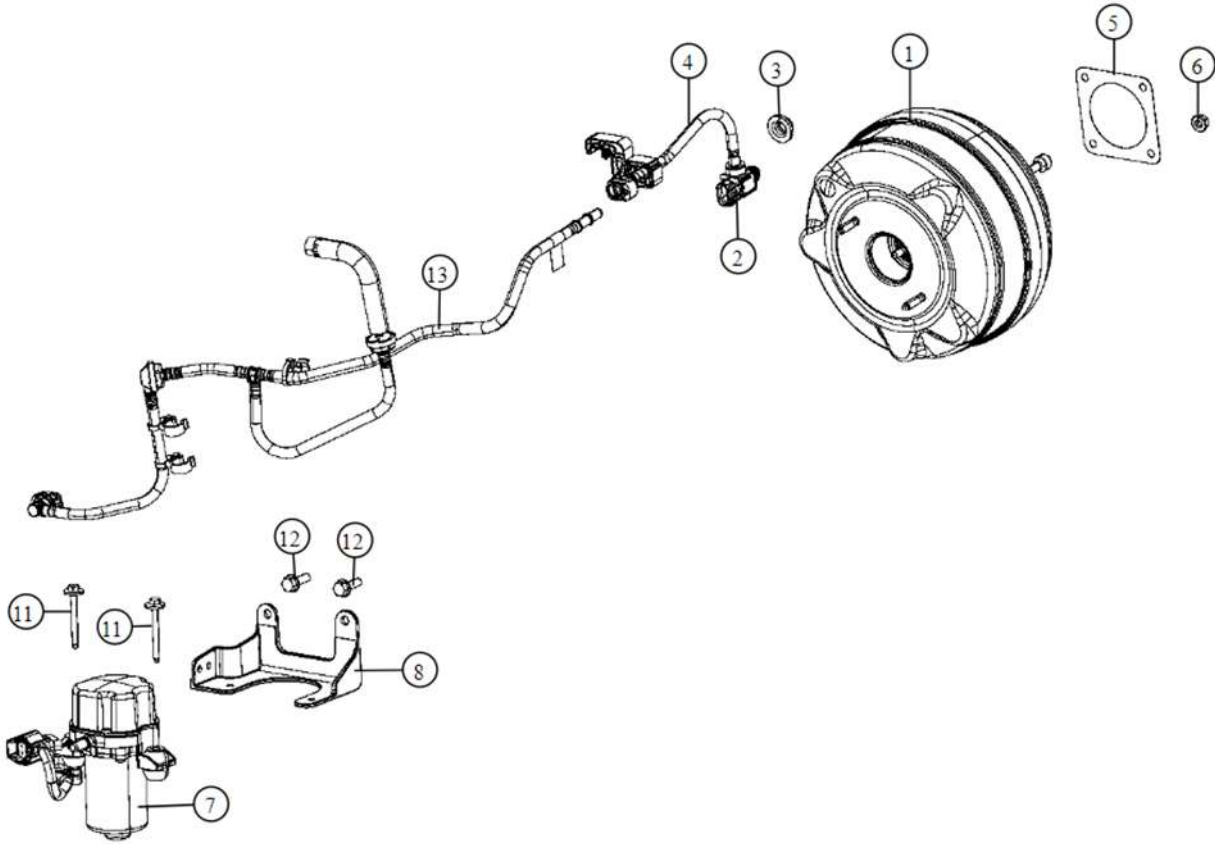
>>>**Note**>>> If the vacuum pump is found to be failed, replace the pump and diagnose the vacuum system again. It is possible a vacuum leak may have caused the pump to run too often or too long causing a pump failure.

<<<**Note**>>> Confirm PCM is up to date, there are new flashes released in February 2019 with improved vacuum pump duty cycle. This will help protect future pump failures.

This document does not authorize warranty repairs. This communication documents a record of past experiences. STAR Online does not provide any conclusions about what is wrong with the vehicle. Rather, it captures all previous cases known that appear to be similar or related to the vehicle symptom / condition. You are the expert, and you are responsible for deciding on the appropriate course of action.

Contact STAR Center, or your Technical Assistance Center Via TechCONNECT or eCONTACT ticket if no solution is found

STAR ONLINE PUBLICATION



This document does not authorize warranty repairs. This communication documents a record of past experiences. STAR Online does not provide any conclusions about what is wrong with the vehicle. Rather, it captures all previous cases known that appear to be similar or related to the vehicle symptom / condition. You are the expert, and you are responsible for deciding on the appropriate course of action.

Contact STAR Center, or your Technical Assistance Center Via TechCONNECT or eCONTACT ticket if no solution is found