



Service Bulletin

Bulletin No.: 20-NA-034

Date: February, 2020

TECHNICAL

Subject: Growling, Grinding, or Whining Noise During Acceleration and Deceleration Between 20 mph (32 km/h) and Highway Speeds

Brand:	Model:	Model Year:		VIN:		Engine:	Additional Options (RPOs):
		from	to	from	to		
Chevrolet	Colorado	2017	2019	SOP	June 17, 2019	LGZ or LWN	AXLE REAR - 3.42 RATIO (RPO GU6)
GMC	Canyon	2017	2019				

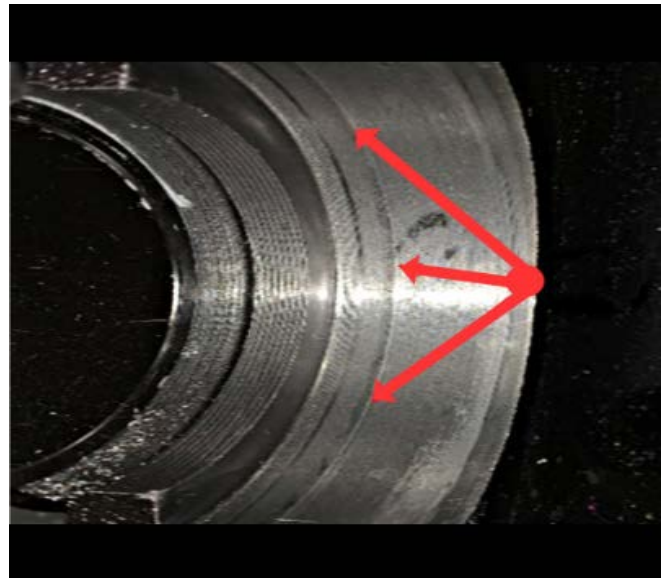
Involved Region or Country	North America
Condition	Some customers may comment on a growling, grinding, or whining noise. The noise may be more predominant during acceleration or deceleration when traveling from 20 mph (32 km/h) and highway speeds.
Cause	The cause of the condition may be a machining issue that creates a “step” on the surface of carrier bearing bore in the differential housing.
Correction	Follow normal service information diagnostics for rear differential noise. If the source of the noise is suspected to be from the rear differential carrier bearings, disassemble the axle assembly and inspect the surface of carrier bearing bore in the differential housing.

Service Procedure

If you encounter a vehicle with the above concern, complete following:

1. Follow normal SI diagnostics for a rear differential noise.
 - ⇒ If the source of the noise is suspected to be from the rear differential carrier bearings, disassemble the axle assembly and inspect the surface of carrier bearing bore in the differential housing.

If the bearing mating surface is free of any imperfections, only replace the carrier bearings. Refer to *Differential Bearing Replacement* in SI.



5519573

- ⇒ If the mating surface contains machining imperfections or contains the “step” like illustrated above, replace the axle assembly. Refer to *Rear Axle Replacement* within SI.

Parts Information

Refer to the GM Electronic Parts Catalog for the proper axle use.

Causal Part	Description	Part Number	Qty
X	AXLE,RR (W/ VENT ATTACHED TO RR AXLE CVR) (CODE ADML,ADV T)	84667415	1
X	AXLE,RR (CODE ACN6,ACRX, AC3K,ADLW, ADMM,ADVU) (W/VENT ATTACHED TO RR AXLE CVR)	84667416	1
X	AXLE, RR (W/ VENT ATTACHED TO RR AXLE CVR) (CODE ADLV,ADMN)	84667417	1
X	AXLE,RR (CODE ADLS,ADMS, ADLM,ADVS) (W/ VENT ATTACHED TO RR AXLE CVR)	84640881	1
Or			
X	BEARING,DIFF (DIFF BEARING ASSY M220 10001242) (ACDelco #S1404)	23490332	2

Warranty Information

For vehicles repaired under warranty, use:

Labor Operation	Description	Labor Time
3031650	Differential Bearing Replacement	Use Published Labor Operation Time
Or		
3032400	Rear Axle Replacement	Use Published Labor Operation Time

Version	1
Modified	Released February 19, 2020

GM bulletins are intended for use by professional technicians, NOT a "do-it-yourselfer". They are written to inform these technicians of conditions that may occur on some vehicles, or to provide information that could assist in the proper service of a vehicle. Properly trained technicians have the equipment, tools, safety instructions, and know-how to do a job properly and safely. If a condition is described, DO NOT assume that the bulletin applies to your vehicle, or that your vehicle will have that condition. See your GM dealer for information on whether your vehicle may benefit from the information.



WE SUPPORT VOLUNTARY
TECHNICIAN
CERTIFICATION