

GLOBAL SAFETY FIELD INVESTIGATIONS
DCS5334
URGENT - DISTRIBUTE IMMEDIATELY

Date: February 14, 2019

Subject: N192285430 - Service Update
Engine Control Module Calibration Error

Models: 2020 Chevrolet Silverado HD
2020 GMC Sierra HD
Equipped with Diesel Engine, 8 CYL, 6.6 L (RPO L5P)

To: All General Motors Dealers

General Motors is releasing Service Update N192285430 today. The total number of U.S. vehicles involved is approximately 37,740. Please see the attached bulletin for details.

Global Warranty Management (GWM)

The Required Field Action section on the Investigate Vehicle History (IVH) screen will be updated February 14, 2019. A list of involved vehicles in dealer new inventory is attached to this message. Please hold all warranty transactions until IVH has been updated.

END OF MESSAGE
GLOBAL SAFETY FIELD INVESTIGATIONS

Service Update

N192285430 Engine Control Module Calibration Error



Release Date: February 2020

Revision: 00

Attention: This service update includes vehicles in dealer inventory and customer vehicles that return to the dealership for any reason. This bulletin will expire at the end of the involved vehicle's New Vehicle Limited Warranty period.

Make	Model	Model Year		RPO	Description
		From	To		
Chevrolet	Silverado HD	2020	2020	L5P	Engine-Diesel, 8 Cyl, 6.6L, V8, Turbo, Duramax
GMC	Sierra HD				

Involved vehicles are marked "open" on the Investigate Vehicle History screen in GM Global Warranty Management system. This site should always be checked to confirm vehicle involvement prior to beginning any required inspections and/or repairs.

Condition	Certain 2020 model year Chevrolet Silverado HD and GMC Sierra HD vehicles may have an SES light, the fuel gauge unexpectedly reading empty, and/or the low fuel message falsely illuminate due to an error in the engine control module (ECM) calibration (DTC P0461).
Correction	Dealers are to reprogram the ECM.

Parts

No parts are required for this repair unless the vehicle comes in with code P24B0.

Warranty Information

Labor Operation	Description	Labor Time	Trans. Type	Net Item
9104808*	Checked for DTCs and Verified Module Software or Calibration Level: Module Is Programmed with Same Level Software or Calibration	0.3	ZFAT	N/A
	Add: Exhaust Particulate Sensor Replacement	-		
		0.4		
9104809*	Checked for DTCs and Engine Control Module Reprogramming with SPS	0.4		
	Add: Exhaust Particulate Sensor Replacement	-		
		0.4		

*** Warning:** To avoid warranty transaction rejections, carefully read and follow the instructions below:

- The SPS Warranty Claim Code must be accurately entered in the "SPS Warranty Claim Code" field of the transaction.
- When more than one Warranty Claim Code is generated for a programming event, it is required to document all Warranty Claim Codes in the "Correction" field on the job card. Dealers must also enter one of the codes in the "SPS Warranty Claim Code" field of the transaction, otherwise the transaction will reject. It is best practice to enter the FINAL code provided by SPS.

Warranty Claim Code Information Retrieval

If the SPS Warranty Claim Code was not recorded on the Job Card, the code can be retrieved in the SPS system as follows:

1. Open TIS on the computer used to program the vehicle.
2. Select and start SPS.
3. Select Settings.
4. Select the Warranty Claim Code tab.

The VIN, Warranty Claim Code and Date/Time will be listed on a roster of recent programming events. If the code is retrievable, dealers should resubmit the transaction making sure to include the code in the SPS Warranty Claim Code field.

Service Procedure

Caution: Before downloading the update files, be sure the computer is connected to the internet through a network cable (hardwired). DO NOT DOWNLOAD or install the files wirelessly. If there is an interruption during programming, programming failure or control module damage may occur.

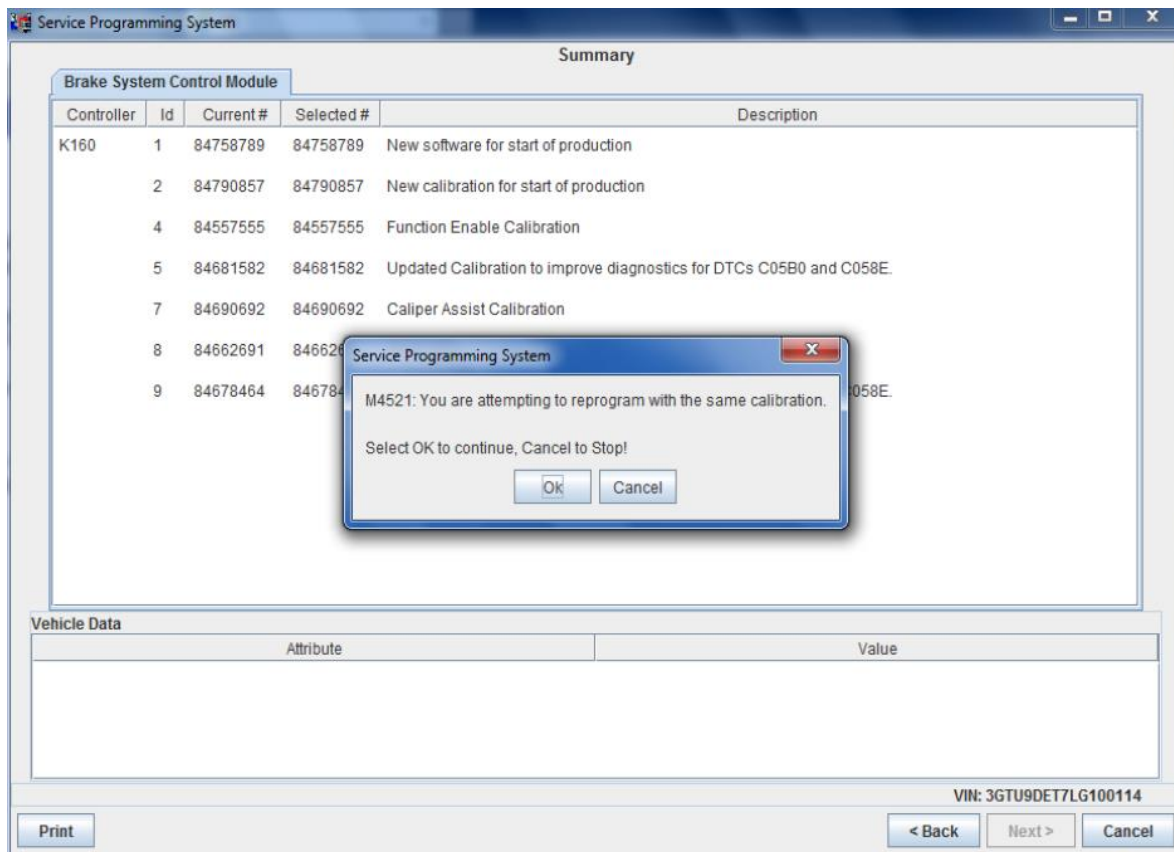
Service Update

N192285430 Engine Control Module Calibration Error



Important: Carefully read and follow the instructions below.

- Ensure the programming tool is equipped with the latest software and is securely connected to the data link connector. If there is an interruption during programming, programming failure or control module damage may occur.
- Stable battery voltage is critical during programming. Any fluctuation, spiking, over voltage or loss of voltage will interrupt programming. Install a GM Authorized Programming Support Tool to maintain system voltage. Refer to www.gmdesolutions.com for further information. If not available, connect a fully charged 12 V jumper or booster pack disconnected from the AC voltage supply. DO NOT connect a battery charger.
- Turn OFF or disable systems that may put a load on the vehicles battery such as; interior lights, exterior lights (including daytime running lights), HVAC, radio, etc.
- Clear DTCs after programming is complete. Clearing powertrain DTCs will set the Inspection/Maintenance (I/M) system status indicators to NO.



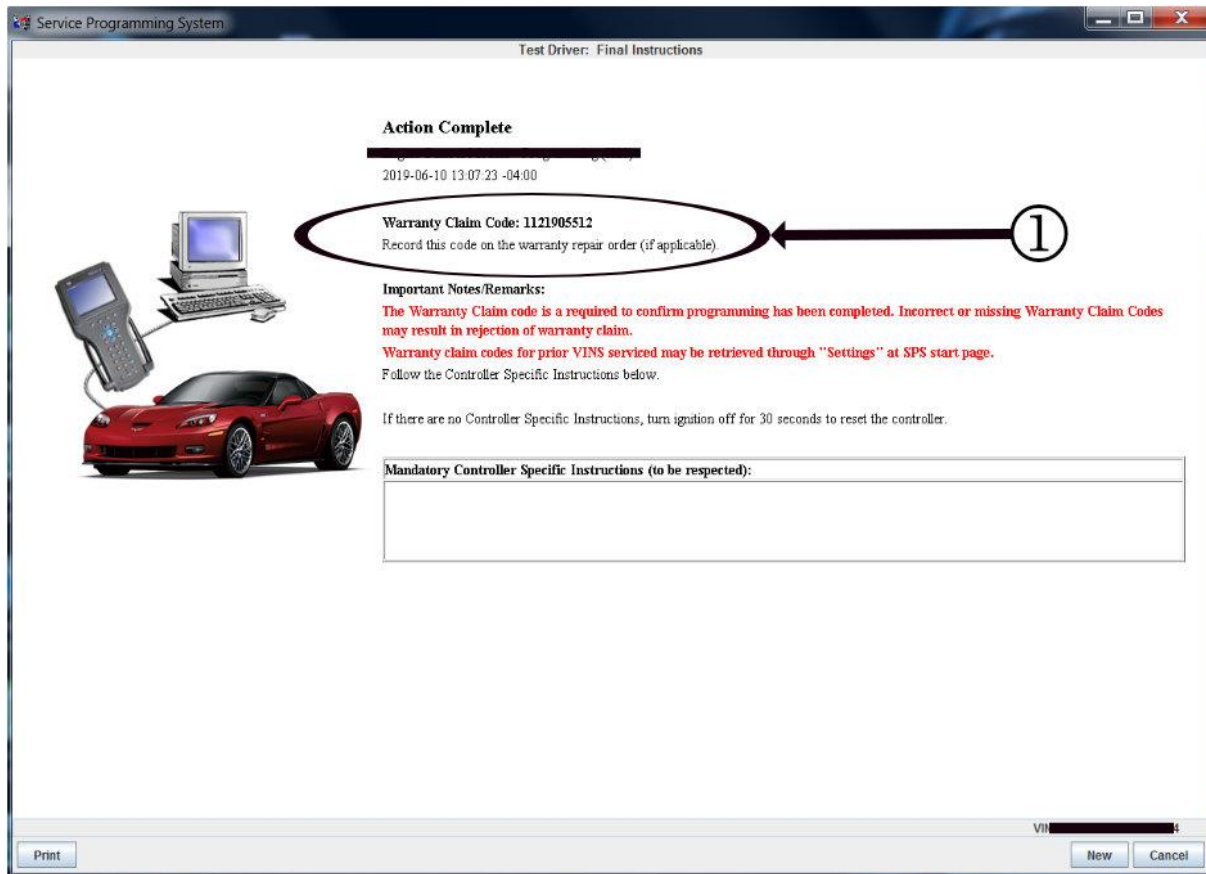
5431207

Important: If the Same Calibration/Software Warning is noted on the SPS screen, select OK and follow screen instructions. After a successful programming event, the WCC is located in the Service Programming System dialogue box of the SPS Summary screen. No further action is required. Refer to the Warranty section of the bulletin.

1. Using GDS2, check the Engine Control Module (ECM) for the presence of DTC P24B0.
 - 1.1 If DTC P24B0 is present, replace the particulate matter sensor. Refer to *Exhaust Particulate Sensor Replacement* in SI.
2. Reprogram the Engine Control Module (ECM).
 - 2.1 Select K20 Engine Control Module from the controller screen.
 - 2.2 Refer to *K20 Engine Control Module: Programming and Setup* in SI for step-by-step instructions.

Service Update

N192285430 Engine Control Module Calibration Error



5431209

Important: To avoid warranty transaction rejections, you **MUST** record the warranty claim code provided on the SPS Warranty Claim Code (WCC) screen on the job card. Refer to callout 1 above for the location of the WCC on the SPS screen.

- Record SPS Warranty Claim Code on job card for warranty transaction submission.

Dealer Responsibility

Whenever a vehicle subject to this service update enters your vehicle inventory or is in your facility for service in the future, and the vehicle is still covered under the New Vehicle Limited Warranty, you must take the steps necessary to be sure the service update correction has been made before selling or releasing the vehicle.

All new, used, GM Certified Used, courtesy transportation vehicles, dealer shuttle vehicles, etc. in dealers' possession and subject to this bulletin must be held and inspected/repared per the service procedure of this bulletin before customers take possession of these vehicles. Involved vehicles must be held and not delivered to customers, dealer-traded, released to auction, used for demonstration, or any other purpose.

All GM Certified Used vehicles currently in the dealers' inventory within the Certified Pre-Owned Inventory System (CPOIS) will be de-certified and must be held and remedied per the service procedure in this bulletin. Upon submitting an accepted/paid warranty transaction in the Global Warranty Management (GWM) system, the vehicle can be re-certified for sale within the CPOIS system, or once again be used in the CTP program.

